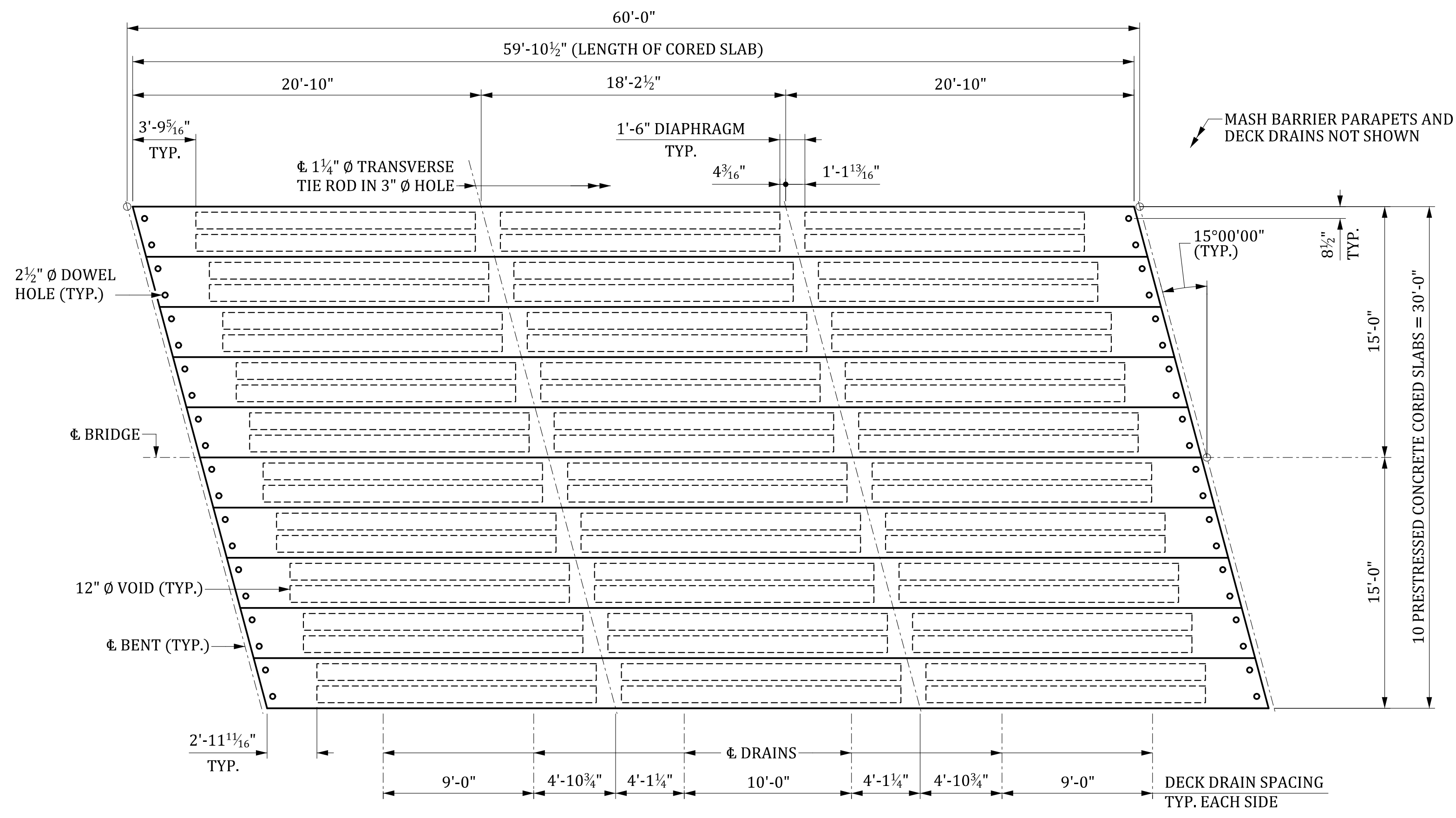
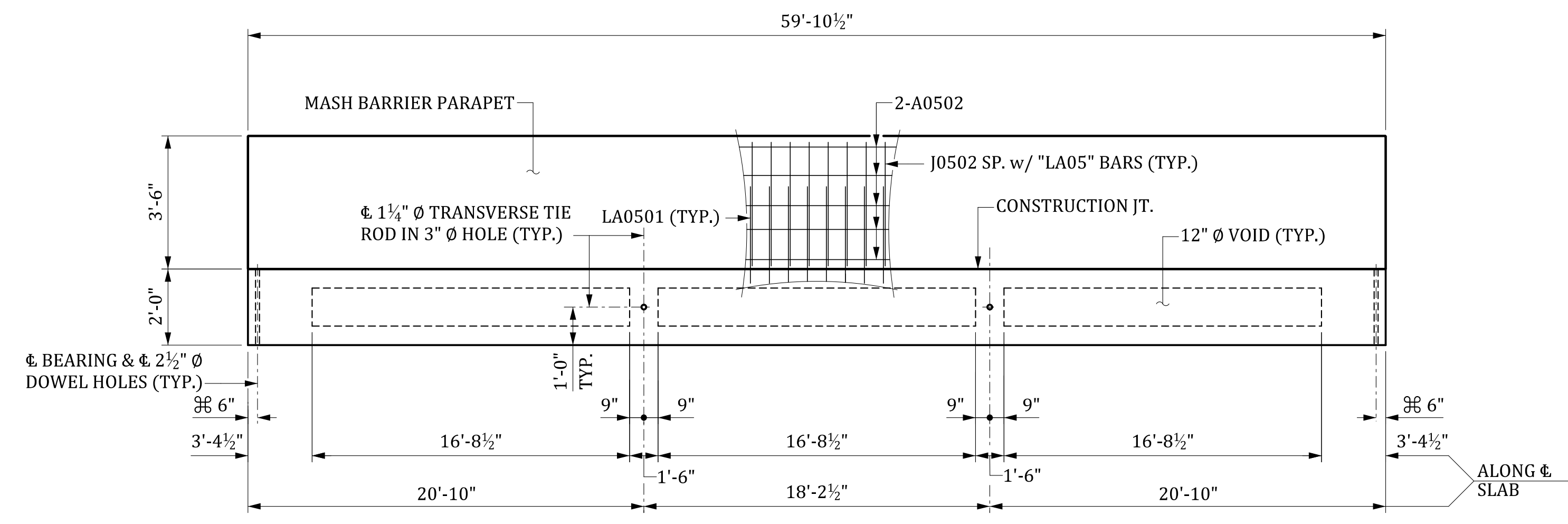


DEAD LOAD DEFLECTION & CAMBER	
CAMBER AT ERECTION (SLAB ALONE IN PLACE)	↑ 2 1/16"
DEFLECTION DUE TO BARRIER PARAPETS AND ASPHALT WEARING SURFACE	↓ X"
FINAL CAMBER	↑ X"



PLAN



ELEVATION

DECK DRAINS AND TIE ROD POCKETS NOT SHOWN.
FOR CORED SLAB REINFORCING STEEL LAYOUT, SEE "PRESTRESSED CONCRETE CORED SLAB 60' SPAN DETAILS" SHEET.

BILL OF MATERIAL ONE 60' CORED SLAB							
MARK	NO. REQ'D	DIMENSION					LENGTH
		"a"	"b"	"c"	"d"	"e"	
A0501	4	30'-10"					30'-10"
J0401	8	1'-10 1/2"	1'-7"				5'-1"
J0402	110	2'-8"	1'-7"				5'-10"
J0403	4	1'-8 1/2"	2'-8"				7'-1"
J0404	12	2'-8 1/2"	1'-7"				5'-11"
J0405	20	2'-9"	1'-7"				5'-11"
J0501	8	2'-7"	6"				3'-7"
LA0501	① 70	5 1/2"					7'-7"
LA0502	① 6	5 3/4"					7'-7"

QUANTITIES			
ITEM	UNIT	INTERIOR	EXTERIOR
REINFORCING STEEL	LB	760	1,361
CONCRETE, Fc 6,000	CY	10.2	10.3
0.6" Ø L.R. STRANDS	LF	1,257	1,257

① "LA05" BARS REQUIRED FOR EXTERIOR SLABS ONLY.

BILL OF MATERIAL ONE 60' BARRIER PARAPET						
MARK	NO. REQ'D	DIMENSION				LENGTH
		"a"	"b"	"c"	"d"	
A0502	10	59'-6"				59'-6"
A0503	12	5'-0"				5'-0"
J0502	76	5 1/2"	3'-3"			7'-0"

QUANTITIES		
ITEM	UNIT	TOTAL
2.0" SCHEDULE 80 PVC CONDUIT	LF	120.0
REINFORCING STEEL	LB	1,239
MASH CONCRETE BARRIER PARAPET	LF	60.0

ESTIMATED QUANTITIES - ONE 60' SPAN		
ITEM	UNIT	TOTAL
2.0" SCHEDULE 80 PVC CONDUIT	LF	240.0
REINFORCING STEEL FOR STRUCTURES (BRIDGE)	LB	2,478
3'-0" X 2'-0" CORED SLABS	LF	598.8
MASH CONCRETE BARRIER PARAPET	LF	120.0
ELASTOMERIC BEARING	EA	20
BRIDGE DECK WATERPROOFING	SY	185.6

NOTE:
FOR ADDITIONAL DETAILS, SEE PRESTRESSED CONCRETE CORED SLAB DETAILS SHEETS.

THIS DRAWING IS FURNISHED FOR INFORMATION ONLY. ALL DIMENSIONS SHOWN ARE SHEET SPECIFIC. ANY USE OF THIS DESIGN AND DRAWING, INCLUDING DIMENSIONS, MUST BE CHECKED BY THE USER'S ENGINEER TO ENSURE DESIGN IS ADEQUATE FOR THE INTENDED USE. ALL DRAWINGS MUST BE SIGNED AND SEALED BY A SOUTH CAROLINA REGISTERED PROFESSIONAL ENGINEER WHEN USED.

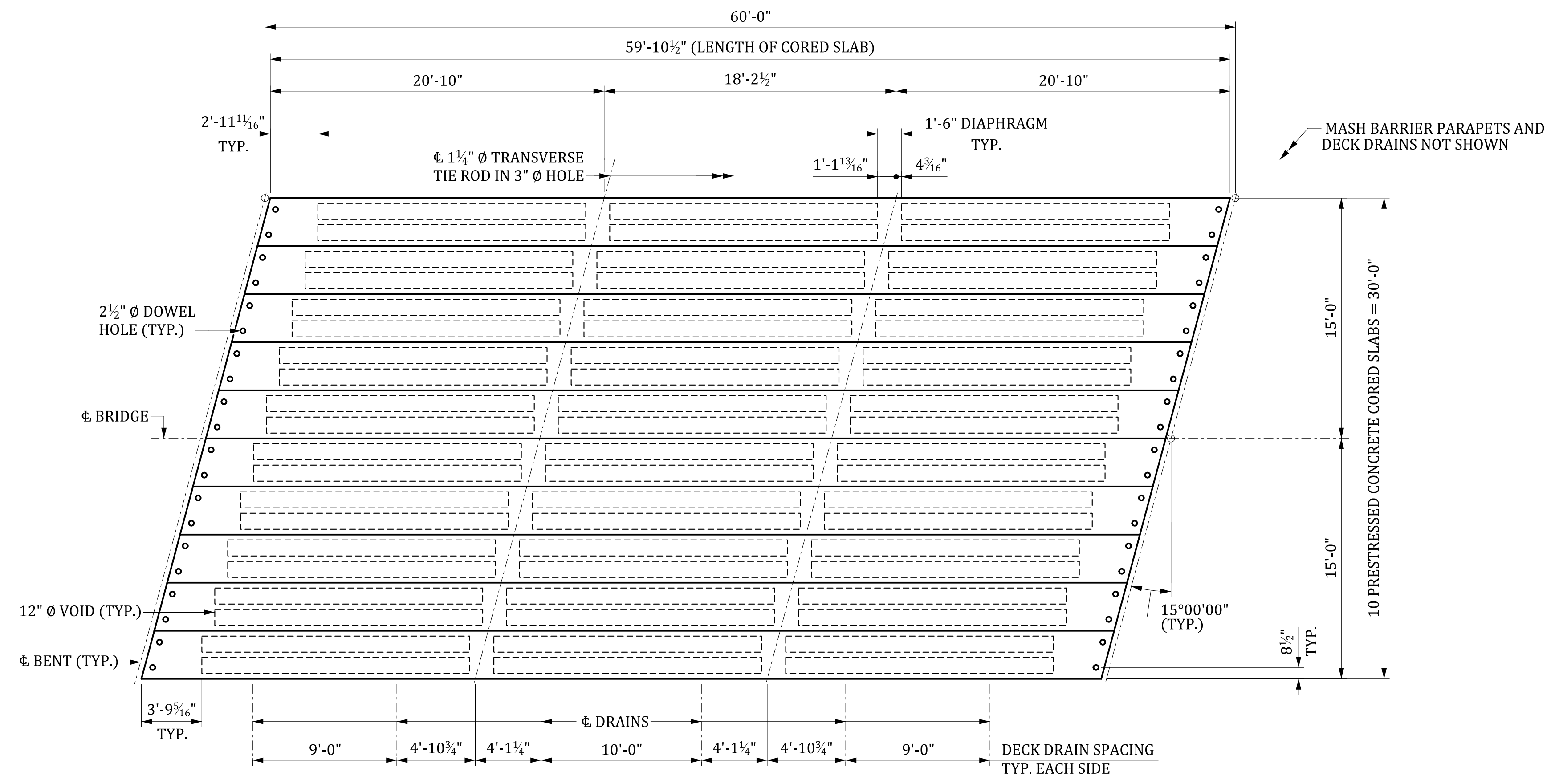
CONSULTANT NAME/LOGO	
SOUTH CAROLINA DEPARTMENT OF TRANSPORTATION	
PRESTRESSED CONCRETE CORED SLAB 60' SPAN 27'-10" ROADWAY (-15° SKEW)	
COUNTY: ###	ROUTE: ###

REV.	DATE	BY	CHK.	DATE	DESCRIPTION OF REVISION

REVIEWED	CTM	GCM	05-23
QUAN.	CTM	MWB	05-23
DR.	OP	SJA	08-23
DES.	BY	CHK.	DATE

MBreeland 6/25/2024 5:22:05 PM 704_ACS_060.dgn

DEAD LOAD DEFLECTION & CAMBER	
CAMBER AT ERECTION (SLAB ALONE IN PLACE)	↑ 2 1/16"
DEFLECTION DUE TO BARRIER PARAPETS AND ASPHALT WEARING SURFACE	↓ X"
FINAL CAMBER	↑ X"



PLAN

BILL OF MATERIAL ONE 60' CORED SLAB							
MARK	NO. REQ'D	DIMENSION					LENGTH
		"a"	"b"	"c"	"d"	"e"	
A0501	4	30'-10"	---	---	---	---	30'-10"
J0401	8	1'-10 1/2"	1'-7"	---	---	---	5'-1"
J0402	110	2'-8"	1'-7"	---	---	---	5'-10"
J0403	4	1'-8 1/2"	2'-8"	---	---	---	7'-1"
J0404	12	2'-8 1/2"	1'-7"	---	---	---	5'-11"
J0405	20	2'-9"	1'-7"	---	---	---	5'-11"
J0501	8	2'-7"	6"	---	---	---	3'-7"
LA0501	① 70	5 1/2"	---	---	---	---	7'-7"
LA0502	① 6	5 3/4"	---	---	---	---	7'-7"

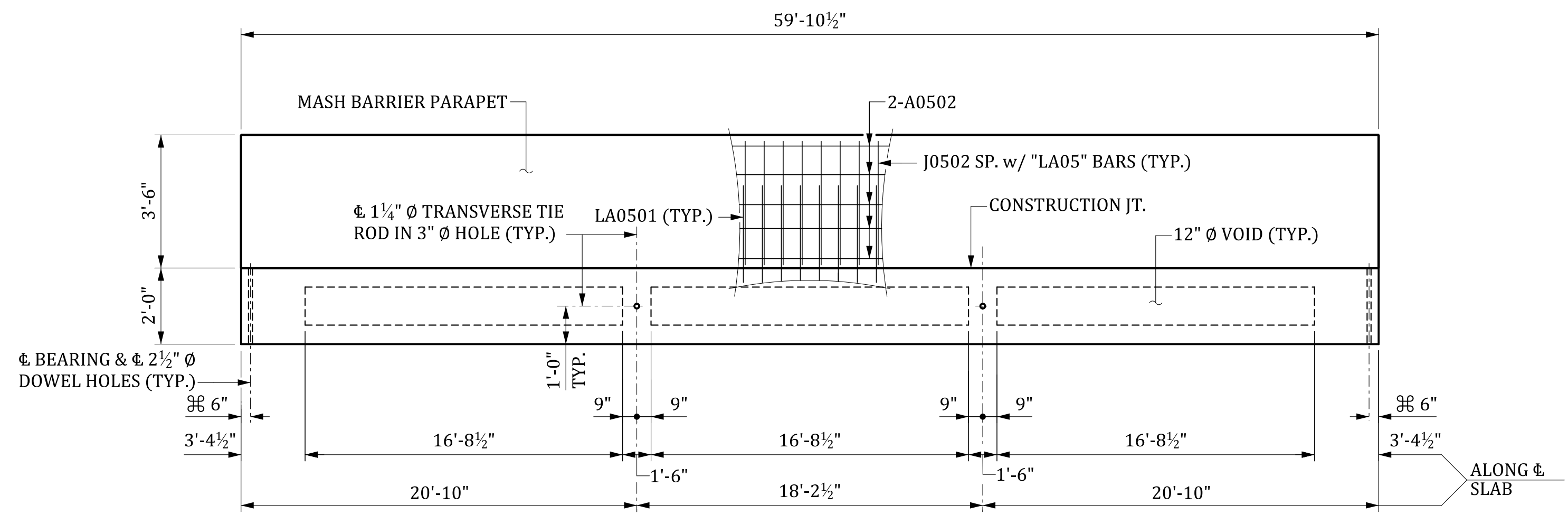
QUANTITIES			
ITEM	UNIT	INTERIOR	EXTERIOR
REINFORCING STEEL	LB	760	1,361
CONCRETE, Fc 6,000	CY	10.2	10.3
0.6" Ø L.R. STRANDS	LF	1,257	1,257

① "LA05" BARS REQUIRED FOR EXTERIOR SLABS ONLY.

BILL OF MATERIAL ONE 60' BARRIER PARAPET					
MARK	NO. REQ'D	DIMENSION			LENGTH
		"a"	"b"	"c"	
A0502	10	59'-6"	---	---	59'-6"
A0503	12	5'-0"	---	---	5'-0"
J0502	76	5 1/2"	3'-3"	---	7'-0"

QUANTITIES		
ITEM	UNIT	TOTAL
2.0" SCHEDULE 80 PVC CONDUIT	LF	120.0
REINFORCING STEEL	LB	1,239
MASH CONCRETE BARRIER PARAPET	LF	60.0

ESTIMATED QUANTITIES - ONE 60' SPAN		
ITEM	UNIT	TOTAL
2.0" SCHEDULE 80 PVC CONDUIT	LF	240.0
REINFORCING STEEL FOR STRUCTURES (BRIDGE)	LB	2,478
3'-0" X 2'-0" CORED SLABS	LF	598.8
MASH CONCRETE BARRIER PARAPET	LF	120.0
ELASTOMERIC BEARING	EA	20
BRIDGE DECK WATERPROOFING	SY	185.6



ELEVATION

DECK DRAINS AND TIE ROD POCKETS NOT SHOWN.
FOR CORED SLAB REINFORCING STEEL LAYOUT, SEE "PRESTRESSED CONCRETE CORED SLAB 60' SPAN DETAILS" SHEET.

NOTE:
FOR ADDITIONAL DETAILS, SEE PRESTRESSED CONCRETE CORED SLAB DETAILS SHEETS.

THIS DRAWING IS FURNISHED FOR INFORMATION ONLY. ALL DIMENSIONS SHOWN ARE SHEET SPECIFIC. ANY USE OF THIS DESIGN AND DRAWING, INCLUDING DIMENSIONS, MUST BE CHECKED BY THE USER'S ENGINEER TO ENSURE DESIGN IS ADEQUATE FOR THE INTENDED USE. ALL DRAWINGS MUST BE SIGNED AND SEALED BY A SOUTH CAROLINA REGISTERED PROFESSIONAL ENGINEER WHEN USED.

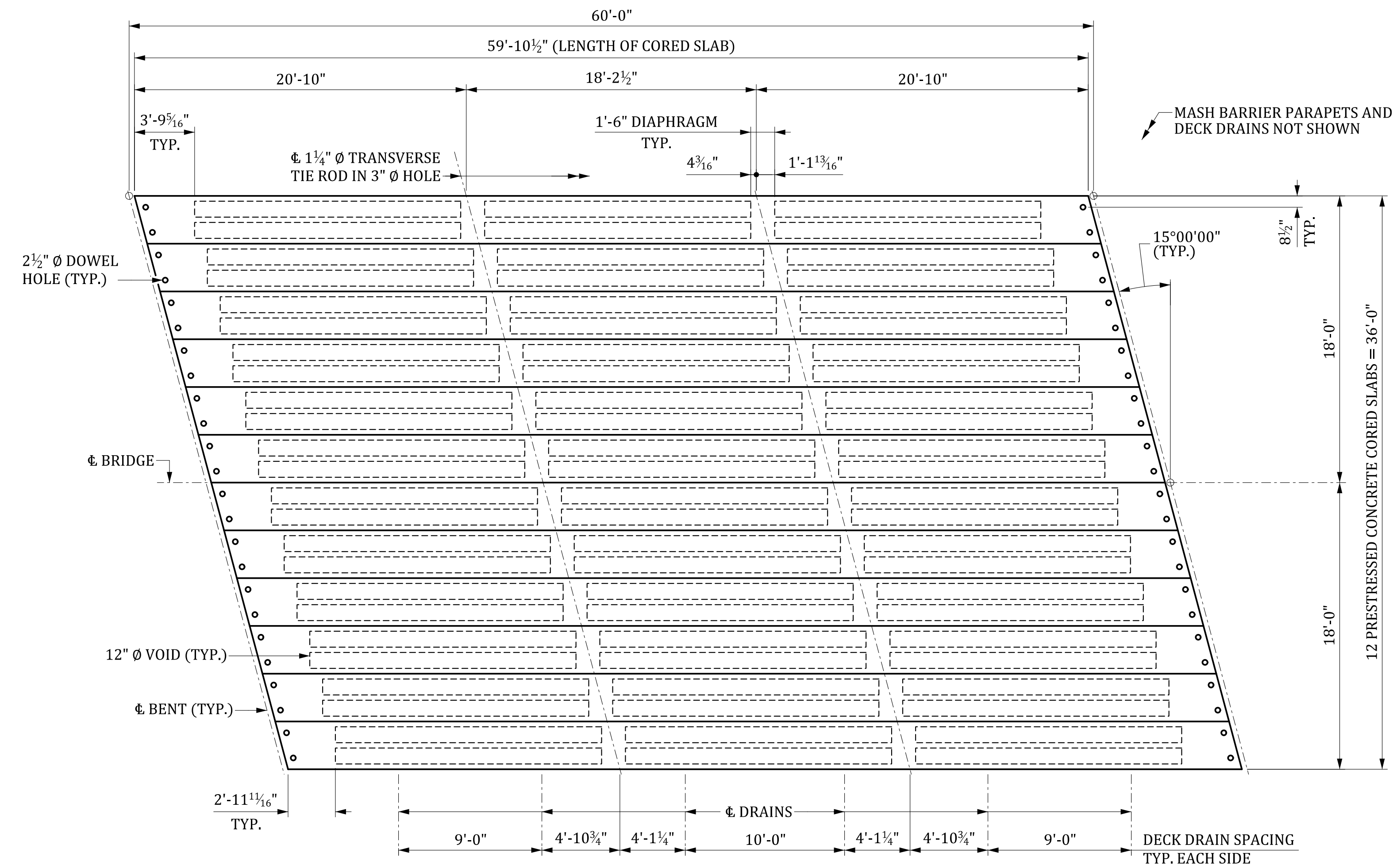
CONSULTANT NAME/LOGO
SOUTH CAROLINA DEPARTMENT OF TRANSPORTATION
PRESTRESSED CONCRETE CORED SLAB 60' SPAN 27'-10" ROADWAY (+15° SKEW)
COUNTY: #### ROUTE: ####

REVIEWED	QUAN	DR.	DES.	CTM	OP	BY	CHK.	DATE

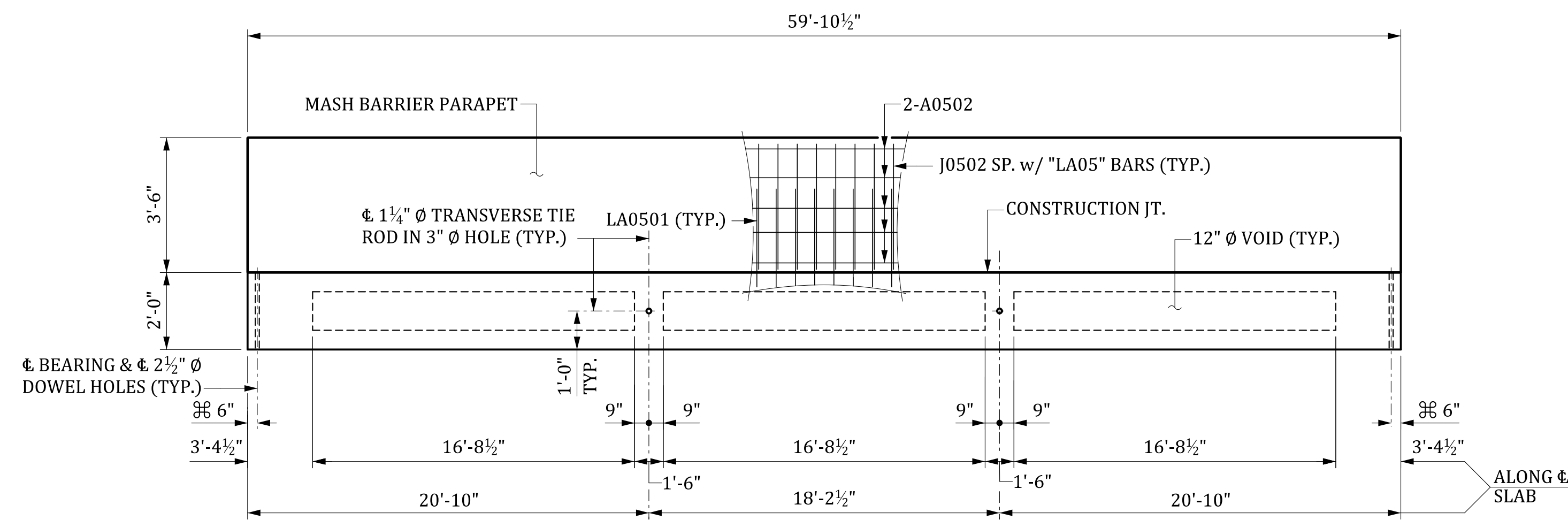
REV.	DATE	DESCRIPTION OF REVISION

M:\Breland\6/25/2024 5:22:04 PM 704_ACS_060.dgn

DEAD LOAD DEFLECTION & CAMBER	
CAMBER AT ERECTION (SLAB ALONE IN PLACE)	↑ 2 1/16"
DEFLECTION DUE TO BARRIER PARAPETS AND ASPHALT WEARING SURFACE	↓ X"
FINAL CAMBER	↑ X"



PLAN



ELEVATION

⊗ NORMAL TO END OF SLAB

DECK DRAINS AND TIE ROD POCKETS NOT SHOWN.
FOR CORED SLAB REINFORCING STEEL LAYOUT, SEE "PRESTRESSED CONCRETE CORED SLAB 60' SPAN DETAILS" SHEET.

BILL OF MATERIAL ONE 60' CORED SLAB							
MARK	NO. REQ'D	DIMENSION					LENGTH
		"a"	"b"	"c"	"d"	"e"	
A0501	4	30'-10"					30'-10"
J0401	8	1'-10 1/2"	1'-7"				5'-1"
J0402	110	2'-8"	1'-7"				5'-10"
J0403	4	1'-8 1/2"	2'-8"				7'-1"
J0404	12	2'-8 1/2"	1'-7"				5'-11"
J0405	20	2'-9"	1'-7"				5'-11"
J0501	8	2'-7"	6"				3'-7"
LA0501	① 70	5 1/2"					7'-7"
LA0502	① 6	5 3/4"					7'-7"

QUANTITIES			
ITEM	UNIT	INTERIOR	EXTERIOR
REINFORCING STEEL	LB	760	1,361
CONCRETE, Fc 6,000	CY	10.2	10.3
0.6" Ø L.R. STRANDS	LF	1,257	1,257

① "LA05" BARS REQUIRED FOR EXTERIOR SLABS ONLY.

BILL OF MATERIAL ONE 60' BARRIER PARAPET						
MARK	NO. REQ'D	DIMENSION				LENGTH
		"a"	"b"	"c"	"d"	
A0502	10	59'-6"				59'-6"
A0503	12	5'-0"				5'-0"
J0502	76	5 1/2"	3'-3"			7'-0"

QUANTITIES		
ITEM	UNIT	TOTAL
2.0" SCHEDULE 80 PVC CONDUIT	LF	120.0
REINFORCING STEEL	LB	1,239
MASH CONCRETE BARRIER PARAPET	LF	60.0

ESTIMATED QUANTITIES - ONE 60' SPAN		
ITEM	UNIT	TOTAL
2.0" SCHEDULE 80 PVC CONDUIT	LF	240.0
REINFORCING STEEL FOR STRUCTURES (BRIDGE)	LB	2,478
3'-0" X 2'-0" CORED SLABS	LF	718.5
MASH CONCRETE BARRIER PARAPET	LF	120.0
ELASTOMERIC BEARING	EA	24
BRIDGE DECK WATERPROOFING	SY	225.6

NOTE:

FOR ADDITIONAL DETAILS, SEE PRESTRESSED CONCRETE CORED SLAB DETAILS SHEETS.

THIS DRAWING IS FURNISHED FOR INFORMATION ONLY. ALL DIMENSIONS SHOWN ARE SHEET SPECIFIC. ANY USE OF THIS DESIGN AND DRAWING, INCLUDING DIMENSIONS, MUST BE CHECKED BY THE USER'S ENGINEER TO ENSURE DESIGN IS ADEQUATE FOR THE INTENDED USE. ALL DRAWINGS MUST BE SIGNED AND SEALED BY A SOUTH CAROLINA REGISTERED PROFESSIONAL ENGINEER WHEN USED.

CONSULTANT NAME/LOGO

SOUTH CAROLINA
DEPARTMENT OF TRANSPORTATION

PRESTRESSED CONCRETE CORED SLAB
60' SPAN
33'-10" ROADWAY (-15° SKEW)

COUNTY: ###

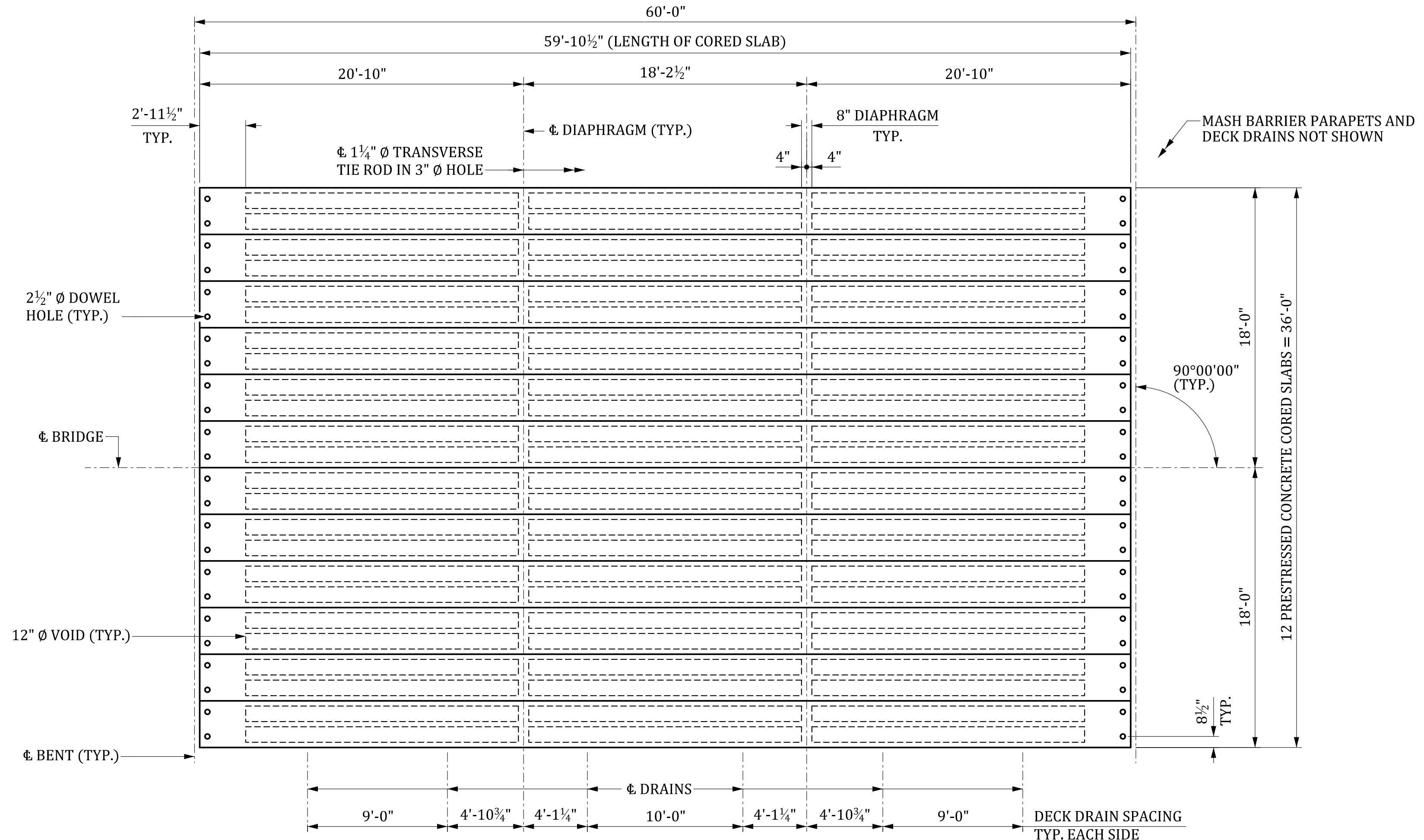
ROUTE: ###

DRAWING NUMBER: 704-ACS.S060.R34.SK-15

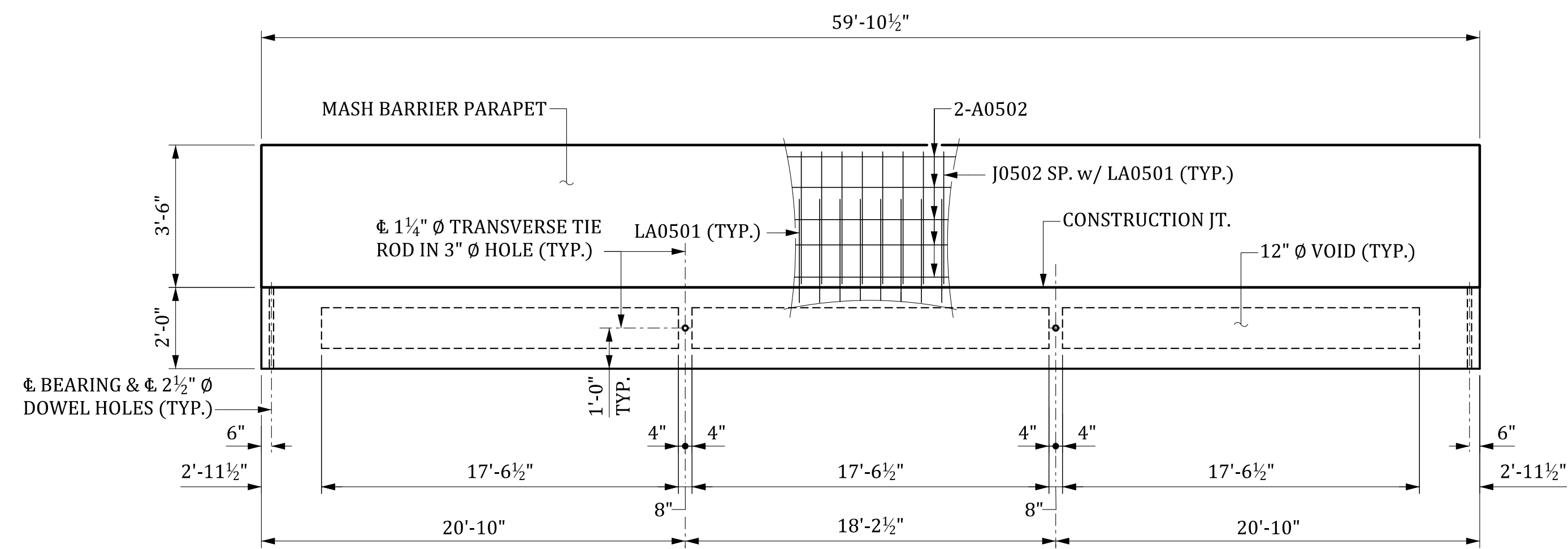
MBreeland 6/25/2024 5:22:09 PM 704_ACS_060.dgn				
REV.	BY	CHK.	DATE	DESCRIPTION OF REVISION

REVIEWED	CTM	GCM	05-23
QUAN.	CTM	MWB	05-23
DR.	OP	SJA	08-23
DES.	BY	CHK.	DATE

DEAD LOAD DEFLECTION & CAMBER	
CAMBER AT ERECTION (SLAB ALONE IN PLACE)	↑ 2 1/16"
DEFLECTION DUE TO BARRIER PARAPETS AND ASPHALT WEARING SURFACE	↓ X"
FINAL CAMBER	↑ X"



PLAN



ELEVATION

DECK DRAINS AND TIE ROD POCKETS NOT SHOWN.
FOR CORED SLAB REINFORCING STEEL LAYOUT, SEE "PRESTRESSED CONCRETE CORED SLAB 60' SPAN DETAILS" SHEET.

BILL OF MATERIAL ONE 60' CORED SLAB							
MARK	NO. REQ'D	DIMENSION					LENGTH
		"a"	"b"	"c"	"d"	"e"	
A0501	4	30'-10"					30'-10"
J0401	8	1'-9 1/2"	1'-7"				5'-0"
J0402	140	2'-8"	1'-7"				5'-10"
J0403	4	1'-8 1/2"	2'-8"				7'-1"
J0501	8	2'-7"	6"				3'-7"
LA0501	① 76	5 1/2"					7'-7"

QUANTITIES			
ITEM	UNIT	INTERIOR	EXTERIOR
REINFORCING STEEL	LB	751	1,352
CONCRETE, f'c 6,000	CY	10.1	10.1
0.6" Ø L.R. STRANDS	LF	1,257	1,257

① LA0501 BARS REQUIRED FOR EXTERIOR SLABS ONLY.

BILL OF MATERIAL ONE 60' BARRIER PARAPET							
MARK	NO. REQ'D	DIMENSION					LENGTH
		"a"	"b"	"c"	"d"	"e"	
A0502	10	59'-6"					59'-6"
A0503	12	5'-0"					5'-0"
J0502	76	5 1/2"	3'-3"				7'-0"

QUANTITIES		
ITEM	UNIT	TOTAL
2.0" SCHEDULE 80 PVC CONDUIT	LF	120.0
REINFORCING STEEL	LB	1,239
MASH CONCRETE BARRIER PARAPET	LF	60.0

ESTIMATED QUANTITIES - ONE 60' SPAN		
ITEM	UNIT	TOTAL
2.0" SCHEDULE 80 PVC CONDUIT	LF	240.0
REINFORCING STEEL FOR STRUCTURES (BRIDGE)	LB	2,478
3'-0" X 2'-0" CORED SLABS	LF	718.5
MASH CONCRETE BARRIER PARAPET	LF	120.0
ELASTOMERIC BEARING	EA	24
BRIDGE DECK WATERPROOFING	SY	225.6

NOTE:
FOR ADDITIONAL DETAILS, SEE PRESTRESSED CONCRETE CORED SLAB DETAILS SHEETS.

THIS DRAWING IS FURNISHED FOR INFORMATION ONLY. ALL DIMENSIONS SHOWN ARE SHEET SPECIFIC. ANY USE OF THIS DESIGN AND DRAWING, INCLUDING DIMENSIONS, MUST BE CHECKED BY THE USER'S ENGINEER TO ENSURE DESIGN IS ADEQUATE FOR THE INTENDED USE. ALL DRAWINGS MUST BE SIGNED AND SEALED BY A SOUTH CAROLINA REGISTERED PROFESSIONAL ENGINEER WHEN USED.

CONSULTANT NAME/LOGO

SOUTH CAROLINA
DEPARTMENT OF TRANSPORTATION

PRESTRESSED CONCRETE CORED SLAB
60' SPAN
33'-10" ROADWAY (0° SKEW)

COUNTY: #### ROUTE: ####

MBreeland 6/25/2024 5:22:10 PM 704_ACS_060.dgn

REV.	BY	CHK.	DATE	DESCRIPTION OF REVISION

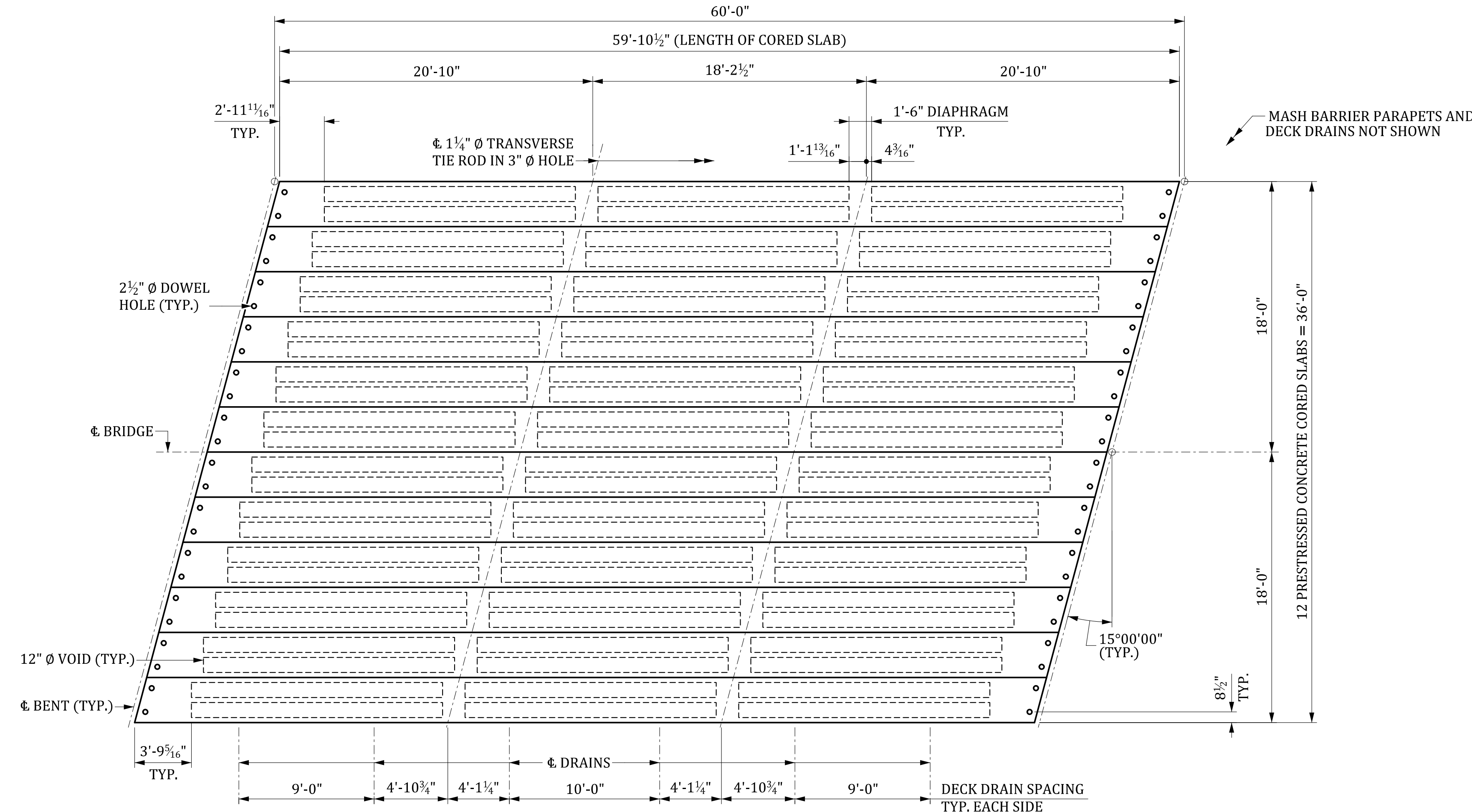
REVIEWED	CTM	GCM	05-23

QUAN.	CTM	MWB	05-23

DR.	OP	SJA	08-23

DES.	BY	CHK.	DATE

DEAD LOAD DEFLECTION & CAMBER	
CAMBER AT ERECTION (SLAB ALONE IN PLACE)	↑ 2 1/16"
DEFLECTION DUE TO BARRIER PARAPETS AND ASPHALT WEARING SURFACE	↓ X"
FINAL CAMBER	↑ X"



PLAN

BILL OF MATERIAL ONE 60' CORED SLAB							
MARK	NO. REQ'D	DIMENSION					LENGTH
		"a"	"b"	"c"	"d"	"e"	
A0501	4	30'-10"	---	---	---	---	30'-10"
J0401	8	1'-10 1/2"	1'-7"	---	---	---	5'-1"
J0402	110	2'-8"	1'-7"	---	---	---	5'-10"
J0403	4	1'-8 1/2"	2'-8"	---	---	---	7'-1"
J0404	12	2'-8 1/2"	1'-7"	---	---	---	5'-11"
J0405	20	2'-9"	1'-7"	---	---	---	5'-11"
J0501	8	2'-7"	6"	---	---	---	3'-7"
LA0501	① 70	5 1/2"	---	---	---	---	7'-7"
LA0502	① 6	5 3/4"	---	---	---	---	7'-7"

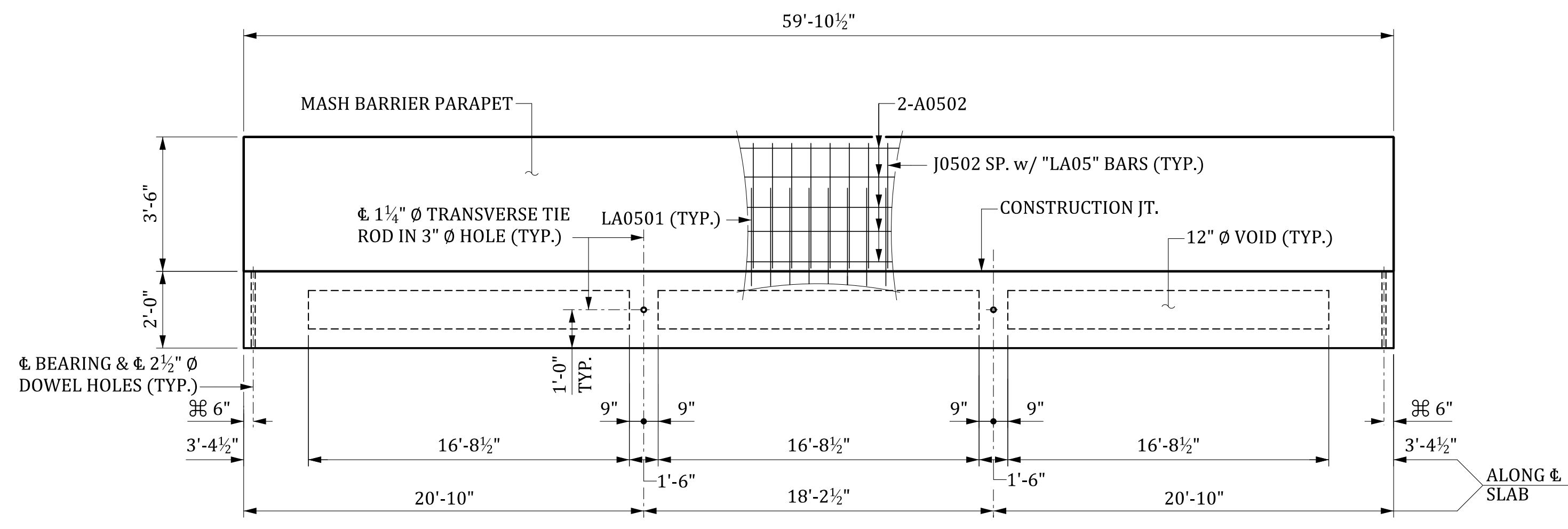
QUANTITIES			
ITEM	UNIT	INTERIOR	EXTERIOR
REINFORCING STEEL	LB	760	1,361
CONCRETE, Fc 6,000	CY	10.2	10.3
0.6" Ø L.R. STRANDS	LF	1,257	1,257

① "LA05" BARS REQUIRED FOR EXTERIOR SLABS ONLY.

BILL OF MATERIAL ONE 60' BARRIER PARAPET					
MARK	NO. REQ'D	DIMENSION			LENGTH
		"a"	"b"	"c"	
A0502	10	59'-6"	---	---	59'-6"
A0503	12	5'-0"	---	---	5'-0"
J0502	76	5 1/2"	3'-3"	---	7'-0"

QUANTITIES		
ITEM	UNIT	TOTAL
2.0" SCHEDULE 80 PVC CONDUIT	LF	120.0
REINFORCING STEEL	LB	1,239
MASH CONCRETE BARRIER PARAPET	LF	60.0

ESTIMATED QUANTITIES - ONE 60' SPAN		
ITEM	UNIT	TOTAL
2.0" SCHEDULE 80 PVC CONDUIT	LF	240.0
REINFORCING STEEL FOR STRUCTURES (BRIDGE)	LB	2,478
3'-0" X 2'-0" CORED SLABS	LF	718.5
MASH CONCRETE BARRIER PARAPET	LF	120.0
ELASTOMERIC BEARING	EA	24
BRIDGE DECK WATERPROOFING	SY	225.6



ELEVATION

DECK DRAINS AND TIE ROD POCKETS NOT SHOWN.
FOR CORED SLAB REINFORCING STEEL LAYOUT, SEE "PRESTRESSED CONCRETE CORED SLAB 60' SPAN DETAILS" SHEET.

NOTE:
FOR ADDITIONAL DETAILS, SEE PRESTRESSED CONCRETE CORED SLAB DETAILS SHEETS.

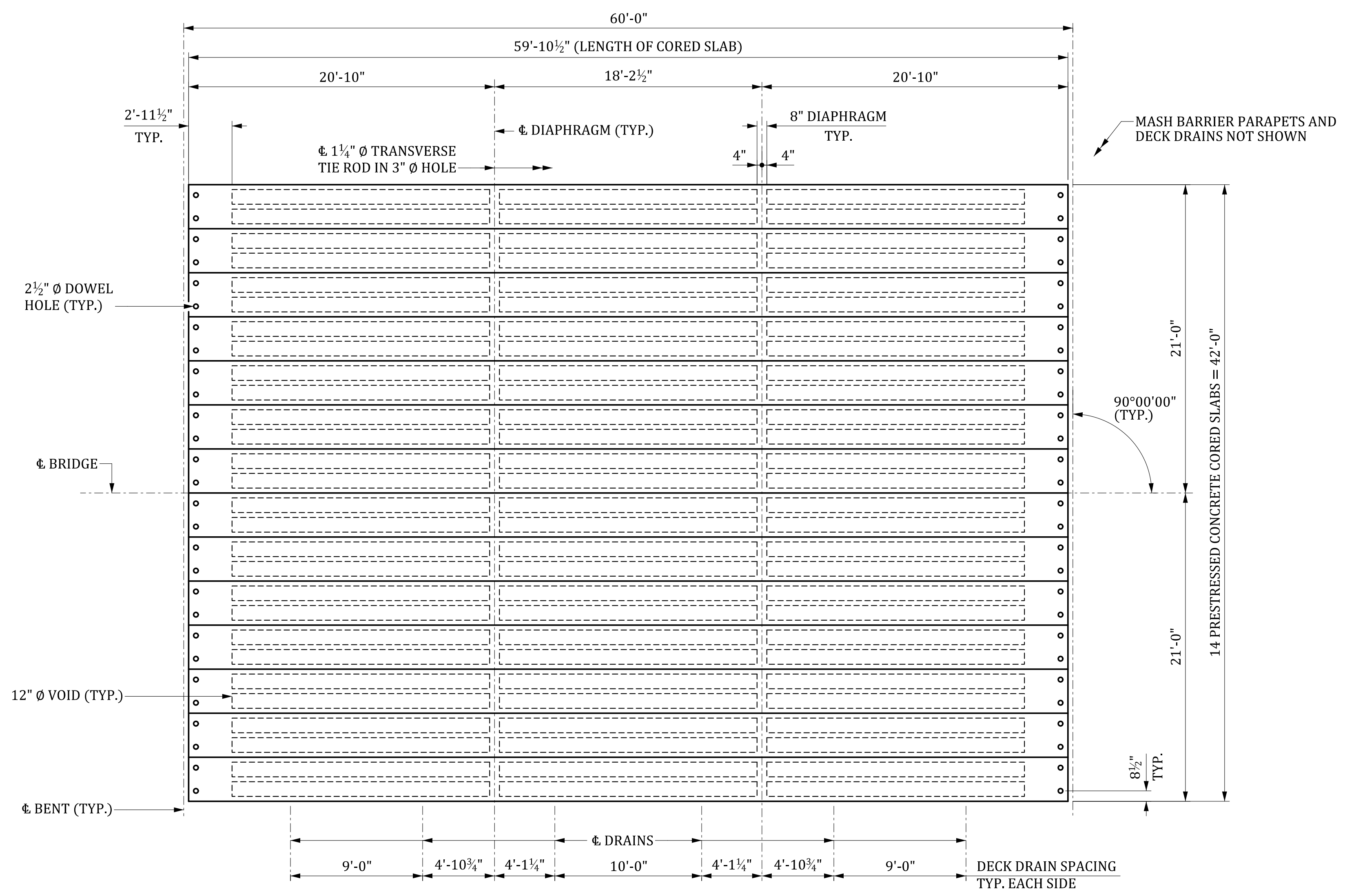
THIS DRAWING IS FURNISHED FOR INFORMATION ONLY. ALL DIMENSIONS SHOWN ARE SHEET SPECIFIC. ANY USE OF THIS DESIGN AND DRAWING, INCLUDING DIMENSIONS, MUST BE CHECKED BY THE USER'S ENGINEER TO ENSURE DESIGN IS ADEQUATE FOR THE INTENDED USE. ALL DRAWINGS MUST BE SIGNED AND SEALED BY A SOUTH CAROLINA REGISTERED PROFESSIONAL ENGINEER WHEN USED.

CONSULTANT NAME/LOGO	
SOUTH CAROLINA DEPARTMENT OF TRANSPORTATION	
PRESTRESSED CONCRETE CORED SLAB 60' SPAN 33'-10" ROADWAY (+15° SKEW)	
COUNTY: ####	ROUTE: ####

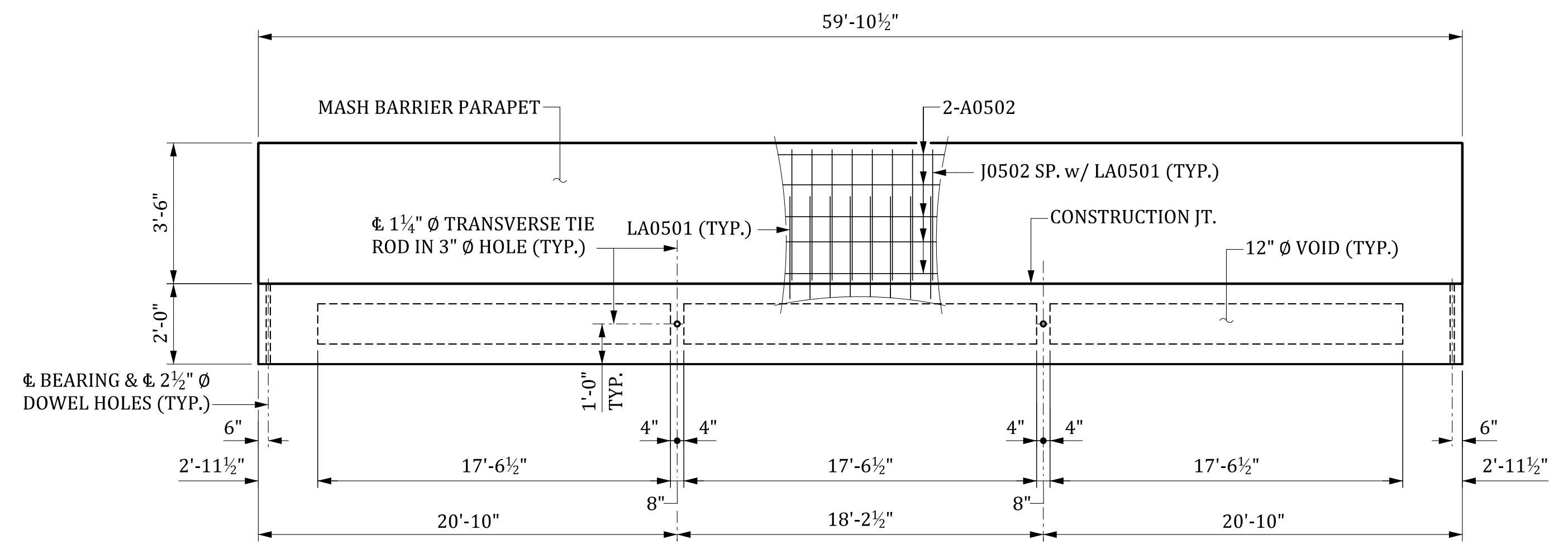
MBreland 6/25/2024 5:22:08 PM 704_ACS_060.dgn	REV.	DATE	BY	CHK.	DATE	DESCRIPTION OF REVISION

⊗ NORMAL TO END OF SLAB

DEAD LOAD DEFLECTION & CAMBER	
CAMBER AT ERECTION (SLAB ALONE IN PLACE)	↑ 2 1/16"
DEFLECTION DUE TO BARRIER PARAPETS AND ASPHALT WEARING SURFACE	↓ X"
FINAL CAMBER	↑ X"



PLAN



ELEVATION

DECK DRAINS AND TIE ROD POCKETS NOT SHOWN.
FOR CORED SLAB REINFORCING STEEL LAYOUT, SEE "PRESTRESSED CONCRETE CORED SLAB 60' SPAN DETAILS" SHEET.

BILL OF MATERIAL ONE 60' CORED SLAB							
MARK	NO. REQ'D	DIMENSION					LENGTH
		"a"	"b"	"c"	"d"	"e"	
A0501	4	30'-10"					30'-10"
J0401	8	1'-9 1/2"	1'-7"				5'-0"
J0402	140	2'-8"	1'-7"				5'-10"
J0403	4	1'-8 1/2"	2'-8"				7'-1"
J0501	8	2'-7"	6"				3'-7"
LA0501	① 76	5 1/2"					7'-7"

QUANTITIES			
ITEM	UNIT	INTERIOR	EXTERIOR
REINFORCING STEEL	LB	751	1,352
CONCRETE, f'c 6,000	CY	10.1	10.1
0.6" Ø L.R. STRANDS	LF	1,257	1,257

① LA0501 BARS REQUIRED FOR EXTERIOR SLABS ONLY.

BILL OF MATERIAL ONE 60' BARRIER PARAPET							
MARK	NO. REQ'D	DIMENSION					LENGTH
		"a"	"b"	"c"	"d"	"e"	
A0502	10	59'-6"					59'-6"
A0503	12	5'-0"					5'-0"
J0502	76	5 1/2"	3'-3"				7'-0"

QUANTITIES		
ITEM	UNIT	TOTAL
2.0" SCHEDULE 80 PVC CONDUIT	LF	120.0
REINFORCING STEEL	LB	1,239
MASH CONCRETE BARRIER PARAPET	LF	60.0

ESTIMATED QUANTITIES - ONE 60' SPAN		
ITEM	UNIT	TOTAL
2.0" SCHEDULE 80 PVC CONDUIT	LF	240.0
REINFORCING STEEL FOR STRUCTURES (BRIDGE)	LB	2,478
3'-0" X 2'-0" CORED SLABS	LF	838.3
MASH CONCRETE BARRIER PARAPET	LF	120.0
ELASTOMERIC BEARING	EA	28
BRIDGE DECK WATERPROOFING	SY	265.6

NOTE:
FOR ADDITIONAL DETAILS, SEE PRESTRESSED CONCRETE CORED SLAB DETAILS SHEETS.

THIS DRAWING IS FURNISHED FOR INFORMATION ONLY. ALL DIMENSIONS SHOWN ARE SHEET SPECIFIC. ANY USE OF THIS DESIGN AND DRAWING, INCLUDING DIMENSIONS, MUST BE CHECKED BY THE USER'S ENGINEER TO ENSURE DESIGN IS ADEQUATE FOR THE INTENDED USE. ALL DRAWINGS MUST BE SIGNED AND SEALED BY A SOUTH CAROLINA REGISTERED PROFESSIONAL ENGINEER WHEN USED.

CONSULTANT NAME/LOGO

SOUTH CAROLINA DEPARTMENT OF TRANSPORTATION

PRESTRESSED CONCRETE CORED SLAB
60' SPAN
39'-10" ROADWAY (0° SKEW)

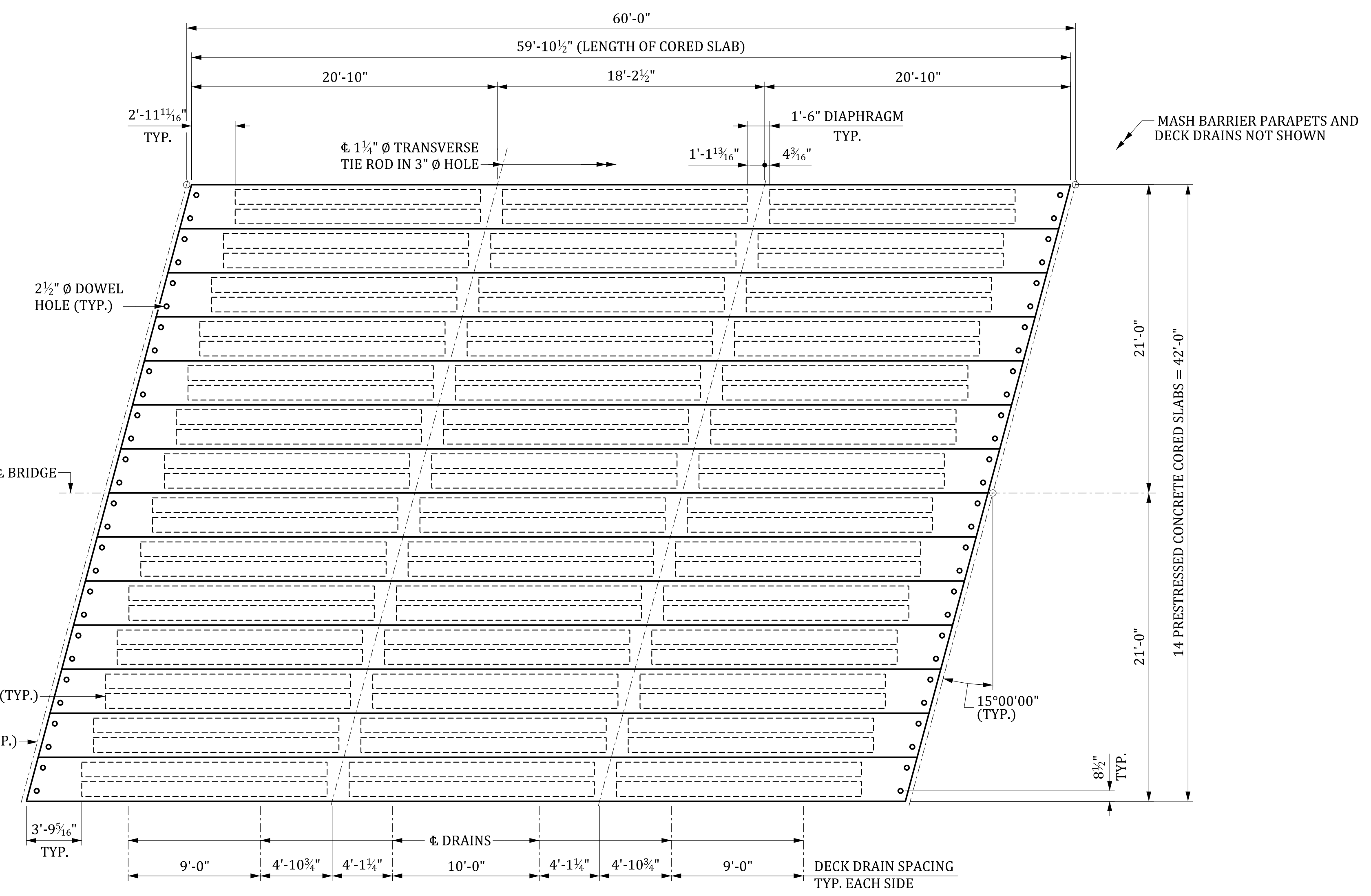
COUNTY: ##### ROUTE: #####

MBreeland 6/25/2024 5:22:14 PM 704_ACS_060.dgn

REV.	BY	CHK.	DATE	DESCRIPTION OF REVISION

REVIEWED	CTM	GCM	05-23
QUAN.	CTM	MWB	05-23
DR.	OP	SJA	08-23
DES.	BY	CHK.	DATE

DEAD LOAD DEFLECTION & CAMBER	
CAMBER AT ERECTION (SLAB ALONE IN PLACE)	↑ 2 1/16"
DEFLECTION DUE TO BARRIER PARAPETS AND ASPHALT WEARING SURFACE	↓ X"
FINAL CAMBER	↑ X"



PLAN

BILL OF MATERIAL ONE 60' CORED SLAB							
MARK	NO. REQ'D	DIMENSION					LENGTH
		"a"	"b"	"c"	"d"	"e"	
A0501	4	30'-10"	---	---	---	---	30'-10"
J0401	8	1'-10 1/2"	1'-7"	---	---	---	5'-1"
J0402	110	2'-8"	1'-7"	---	---	---	5'-10"
J0403	4	1'-8 1/2"	2'-8"	---	---	---	7'-1"
J0404	12	2'-8 1/2"	1'-7"	---	---	---	5'-11"
J0405	20	2'-9"	1'-7"	---	---	---	5'-11"
J0501	8	2'-7"	6"	---	---	---	3'-7"
LA0501	① 70	5 1/2"	---	---	---	---	7'-7"
LA0502	① 6	5 3/4"	---	---	---	---	7'-7"

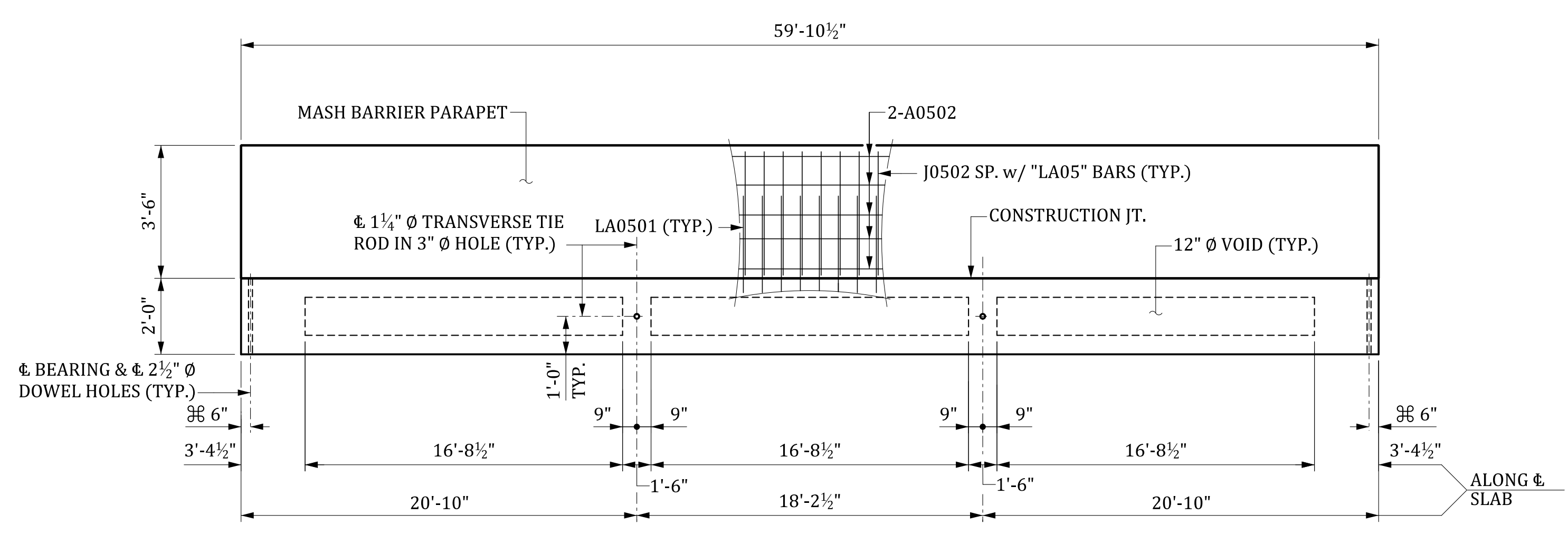
QUANTITIES			
ITEM	UNIT	INTERIOR	EXTERIOR
REINFORCING STEEL	LB	760	1,361
CONCRETE, Fc 6,000	CY	10.2	10.3
0.6" Ø L.R. STRANDS	LF	1,257	1,257

① "LA05" BARS REQUIRED FOR EXTERIOR SLABS ONLY.

BILL OF MATERIAL ONE 60' BARRIER PARAPET						
MARK	NO. REQ'D	DIMENSION				LENGTH
		"a"	"b"	"c"	"d"	
A0502	10	59'-6"	---	---	---	59'-6"
A0503	12	5'-0"	---	---	---	5'-0"
J0502	76	5 1/2"	3'-3"	---	---	7'-0"

QUANTITIES		
ITEM	UNIT	TOTAL
2.0" SCHEDULE 80 PVC CONDUIT	LF	120.0
REINFORCING STEEL	LB	1,239
MASH CONCRETE BARRIER PARAPET	LF	60.0

ESTIMATED QUANTITIES - ONE 60' SPAN		
ITEM	UNIT	TOTAL
2.0" SCHEDULE 80 PVC CONDUIT	LF	240.0
REINFORCING STEEL FOR STRUCTURES (BRIDGE)	LB	2,478
3'-0" X 2'-0" CORED SLABS	LF	838.3
MASH CONCRETE BARRIER PARAPET	LF	120.0
ELASTOMERIC BEARING	EA	28
BRIDGE DECK WATERPROOFING	SY	265.6



ELEVATION

DECK DRAINS AND TIE ROD POCKETS NOT SHOWN.
 FOR CORED SLAB REINFORCING STEEL LAYOUT, SEE "PRESTRESSED CONCRETE CORED SLAB 60' SPAN DETAILS" SHEET.

NOTE:
 FOR ADDITIONAL DETAILS, SEE PRESTRESSED CONCRETE CORED SLAB DETAILS SHEETS.

THIS DRAWING IS FURNISHED FOR INFORMATION ONLY. ALL DIMENSIONS SHOWN ARE SHEET SPECIFIC. ANY USE OF THIS DESIGN AND DRAWING, INCLUDING DIMENSIONS, MUST BE CHECKED BY THE USER'S ENGINEER TO ENSURE DESIGN IS ADEQUATE FOR THE INTENDED USE. ALL DRAWINGS MUST BE SIGNED AND SEALED BY A SOUTH CAROLINA REGISTERED PROFESSIONAL ENGINEER WHEN USED.

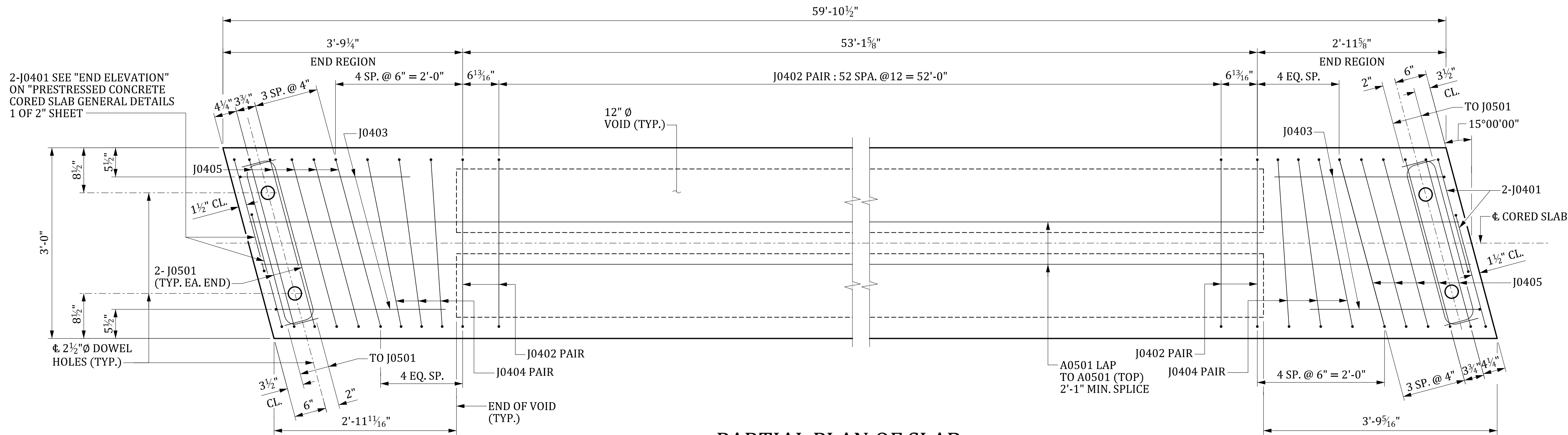
CONSULTANT NAME/LOGO
SOUTH CAROLINA DEPARTMENT OF TRANSPORTATION
PRESTRESSED CONCRETE CORED SLAB 60' SPAN 39'-10" ROADWAY (+15° SKEW)
COUNTY: ##### ROUTE: #####

MBreeland 6/25/2024 5:22:12 PM 704_ACS_060.dgn

REV.	CHK.	DATE	DESCRIPTION OF REVISION

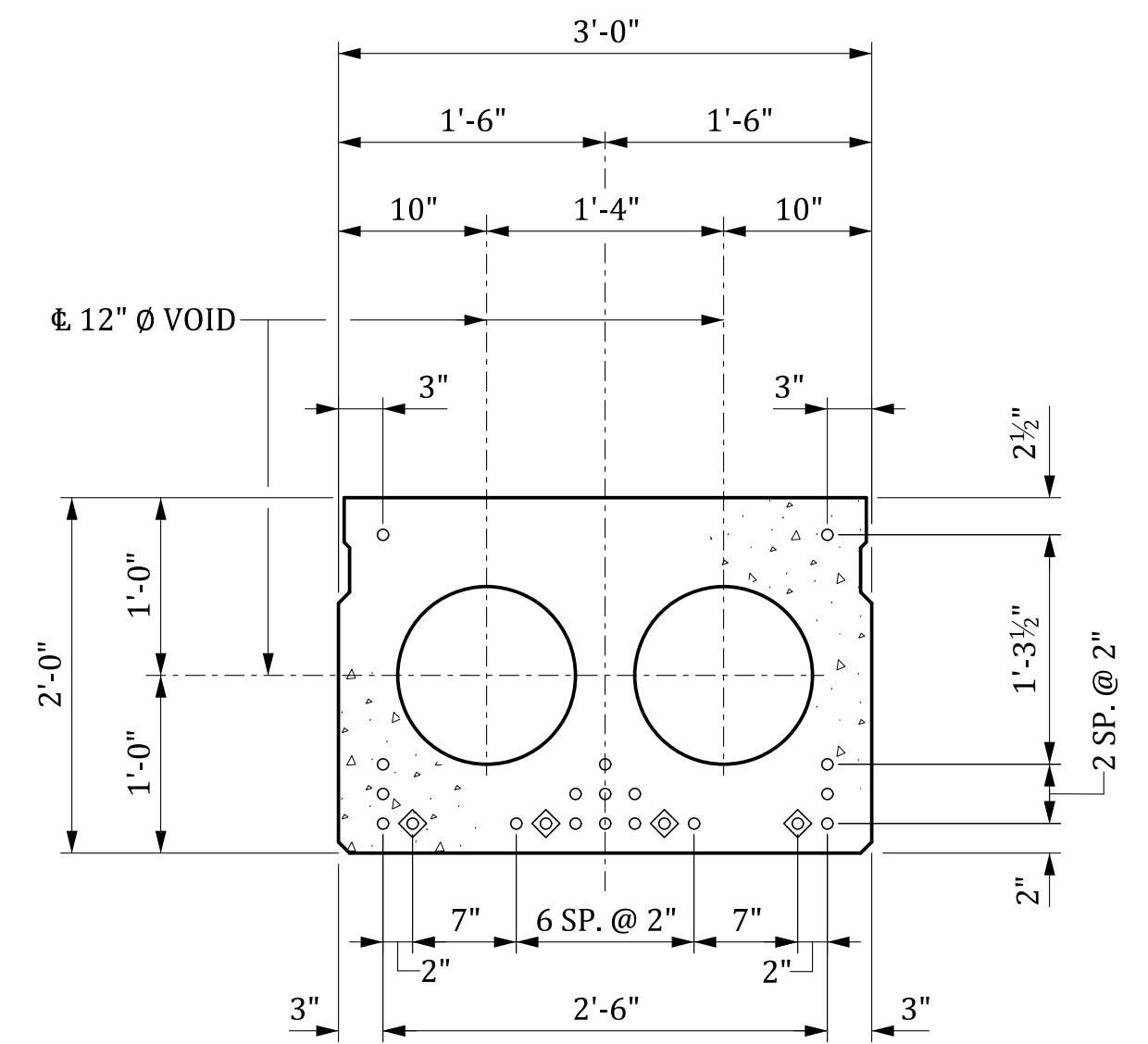
REVIEWED	CTM	GCM	05-23
QUAN	CTM	MWB	05-23
DR.	OP	SJA	08-23
DES.	BY	CHK.	DATE

⊕ NORMAL TO END OF SLAB



PARTIAL PLAN OF SLAB

STRANDS NOT SHOWN.
INTERIOR SLAB SHOWN, EXTERIOR SLAB SIMILAR EXCEPT BARRIER REINFORCEMENT, SEE BELOW.



STRAND LAYOUT

INTERIOR SLAB SHOWN - EXTERIOR SLAB SIMILAR EXCEPT SHEAR KEY LOCATION.

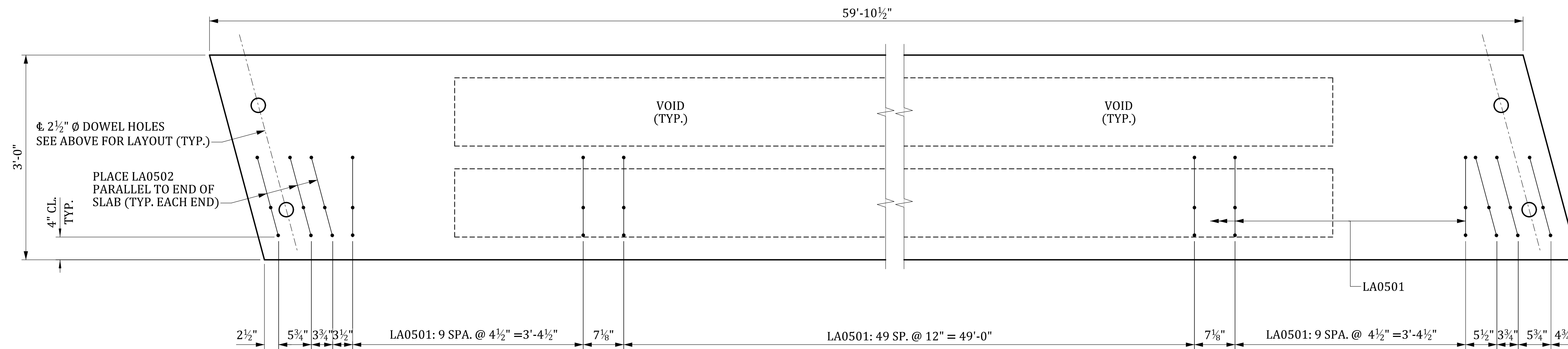
- FULLY BONDED STRANDS
- ◊ DEBONDED STRANDS FOR 6'-0" FROM END OF SLAB

NOTE:
BOND SHALL BE BROKEN ON STRANDS AS SHOWN FOR THE SPECIFIED LENGTH FROM EACH END OF THE CORED SLAB. SEE NOTES ON "PRESTRESSED CONCRETE CORED SLAB TYPICAL SUPERSTRUCTURE SECTION" SHEET.

DESIGN DATA

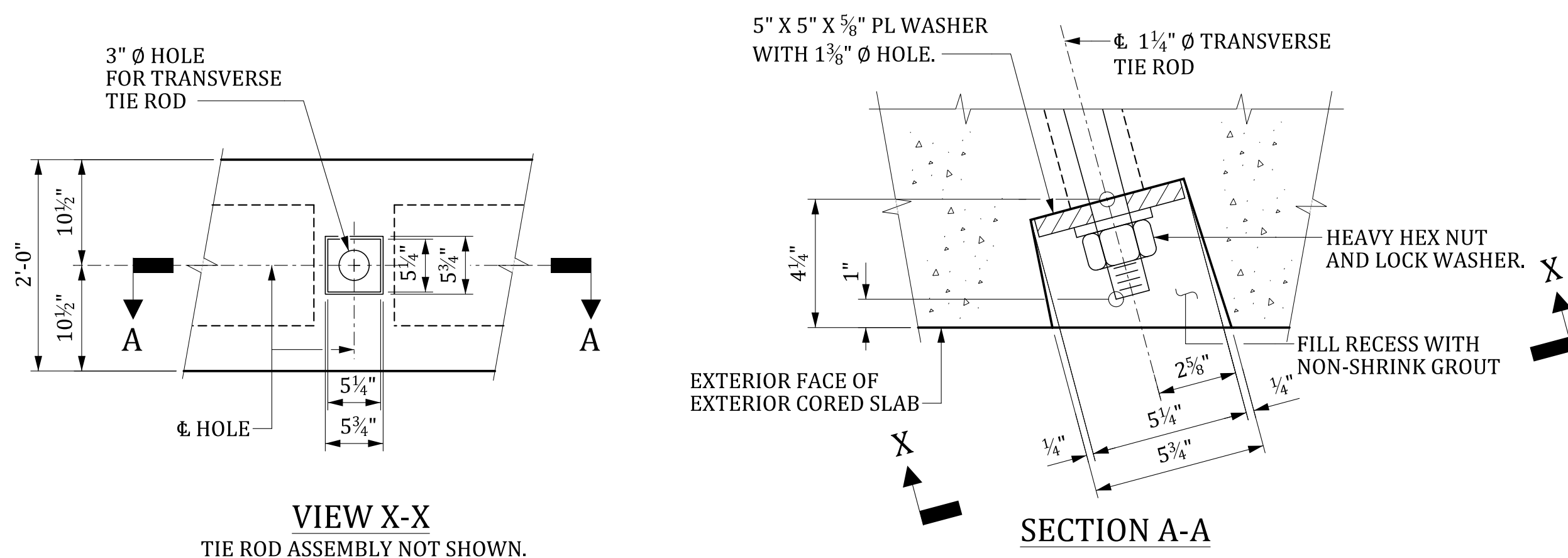
STRANDS:
0.6"Ø LOW RELAXATION GRADE 270
AREA=0.217 SQ. IN.
TENSIONING LOAD = 43.9 KIPS

CONCRETE:
f'c = 6.0 KSI
f'ci = 4.8 KSI



PARTIAL PLAN OF EXTERIOR SLAB

SHOWING PLACEMENT OF LA0501 AND LA0502 BARS FOR MASH BARRIER PARAPET.
"LA05" BARS MAY BE SHIFTED SLIGHTLY TO AVOID STIRRUPS.



TIE ROD POCKET DETAIL

EXTERIOR FACE OF EXTERIOR SLAB.

NOTE:
FOR DIAPHRAGM DIMENSIONS AND LAYOUT, SEE "PRESTRESSED CONCRETE CORED SLAB 60' SPAN-PLAN" SHEET.

STIRRUPS AND VERTICAL BARRIER REINFORCEMENT MAY BE SHIFTED SLIGHTLY TO CLEAR HOLES FOR TIE RODS.

THIS DRAWING IS FURNISHED FOR INFORMATION ONLY. ALL DIMENSIONS SHOWN ARE SHEET SPECIFIC. ANY USE OF THIS DESIGN AND DRAWING, INCLUDING DIMENSIONS, MUST BE CHECKED BY THE USER'S ENGINEER TO ENSURE DESIGN IS ADEQUATE FOR THE INTENDED USE. ALL DRAWINGS MUST BE SIGNED AND SEALED BY A SOUTH CAROLINA REGISTERED PROFESSIONAL ENGINEER WHEN USED.

CONSULTANT NAME/LOGO

SOUTH CAROLINA
DEPARTMENT OF TRANSPORTATION

PRESTRESSED CONCRETE CORED SLAB
60' SPAN DETAILS
(-15° SKEW)

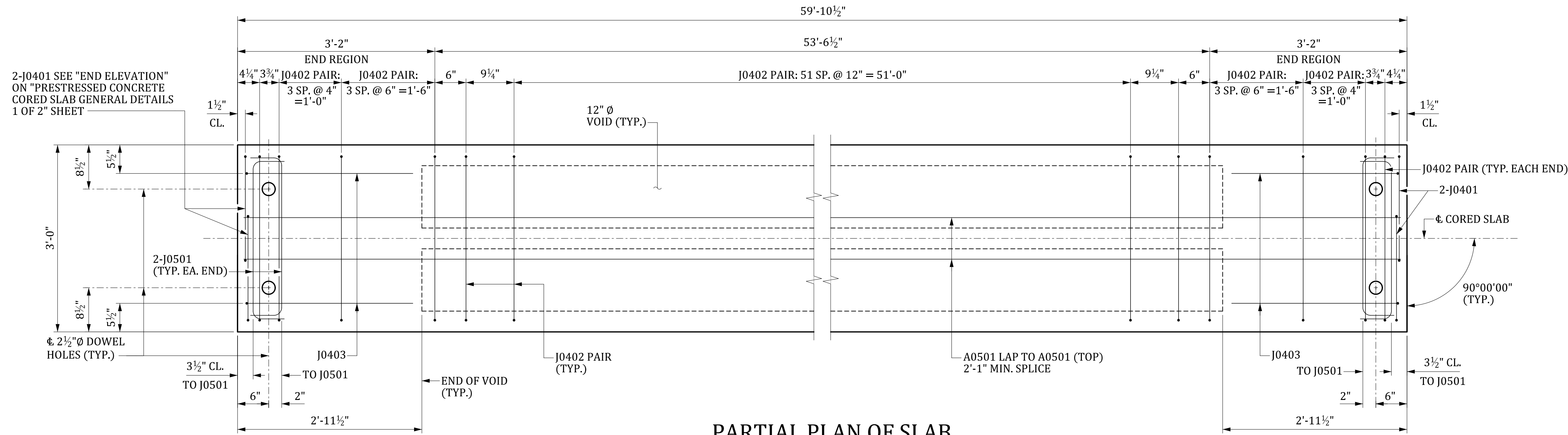
COUNTY: ###

ROUTE: ###

DRAWING NUMBER: 704-ACS.S060.SK-15.D01

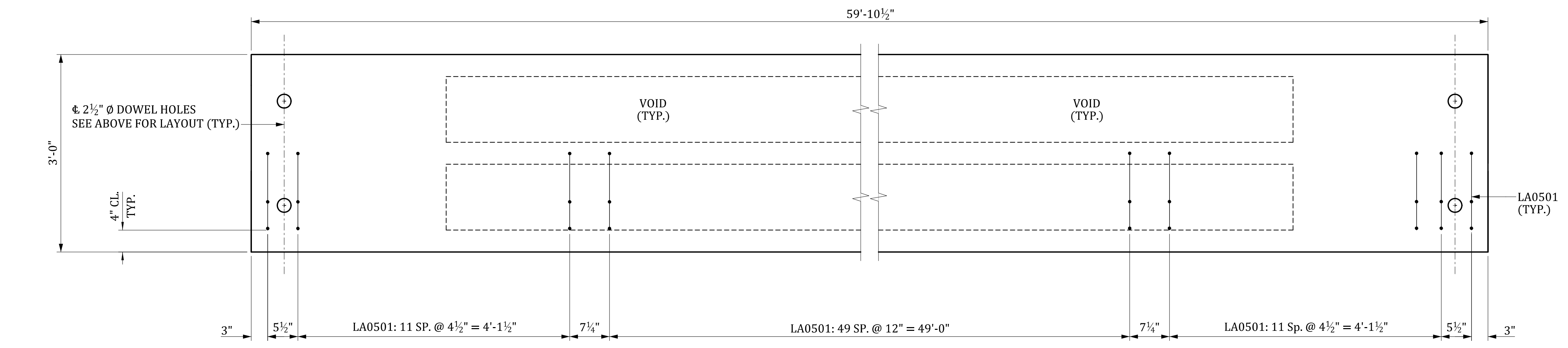
MBreland 6/25/2024 5:22:18 PM 704_ACS_060.dgn					
REV.	DATE	BY	CHK.	DATE	DESCRIPTION OF REVISION

REVIEWED	QUAN.	CTM	GCM	05-23
DR.	CTM	MWB	05-23	
DES.	OP	SJA	08-23	
	BY	CHK.	DATE	



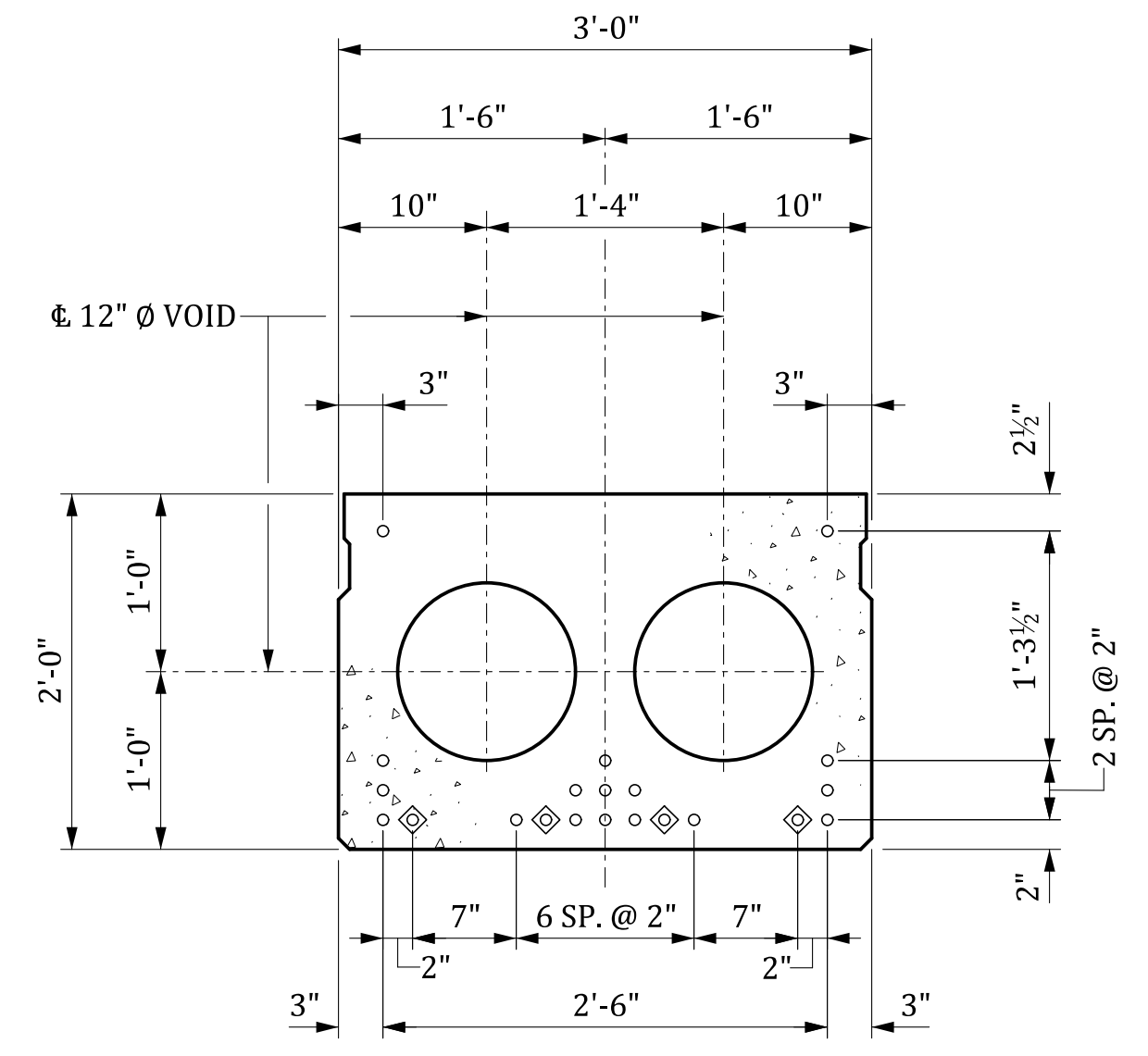
PARTIAL PLAN OF SLAB

STRANDS NOT SHOWN.
INTERIOR SLAB SHOWN, EXTERIOR SLAB SIMILAR EXCEPT BARRIER REINFORCEMENT. SEE BELOW.



PARTIAL PLAN OF EXTERIOR SLAB

SHOWING PLACEMENT OF LA0501 BARS FOR MASH BARRIER PARAPET.
LA0501 BARS MAY BE SHIFTED SLIGHTLY TO AVOID STIRRUPS.



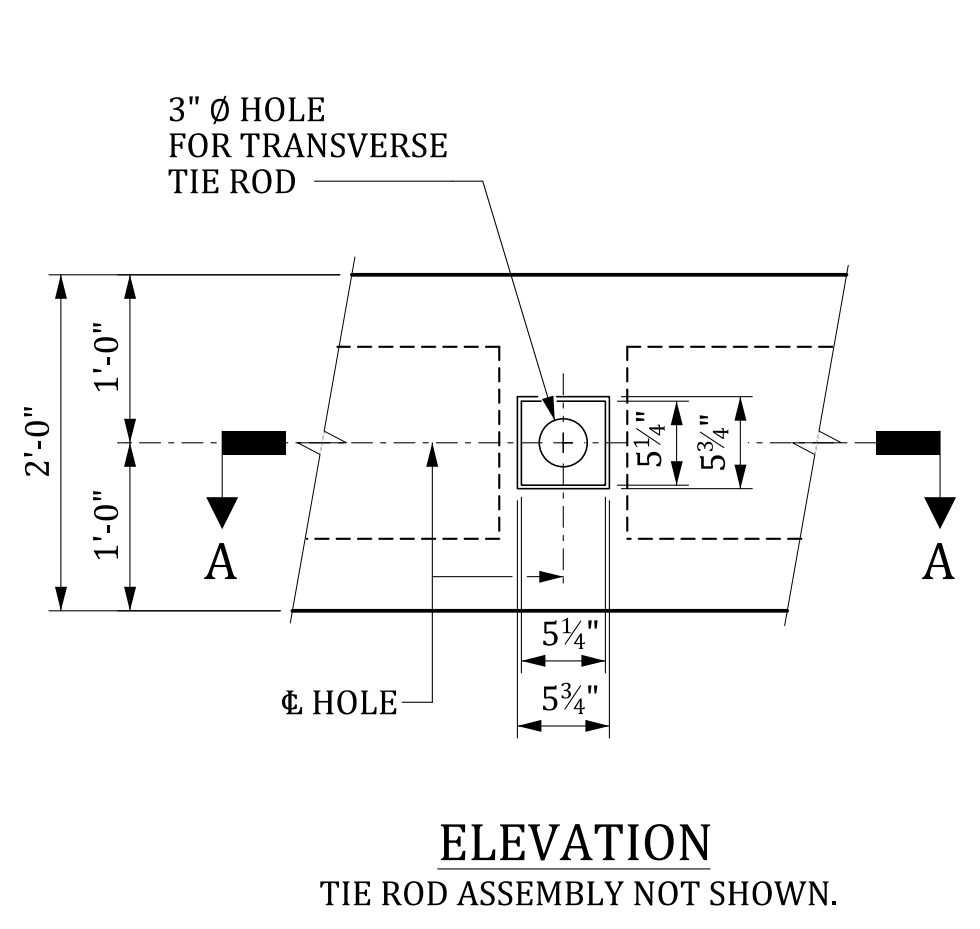
STRAND LAYOUT

INTERIOR SLAB SHOWN - EXTERIOR SLAB SIMILAR EXCEPT SHEAR KEY LOCATION.

- FULLY BONDED STRANDS
- ◊ DEBONDED STRANDS FOR 6'-0" FROM END OF SLAB

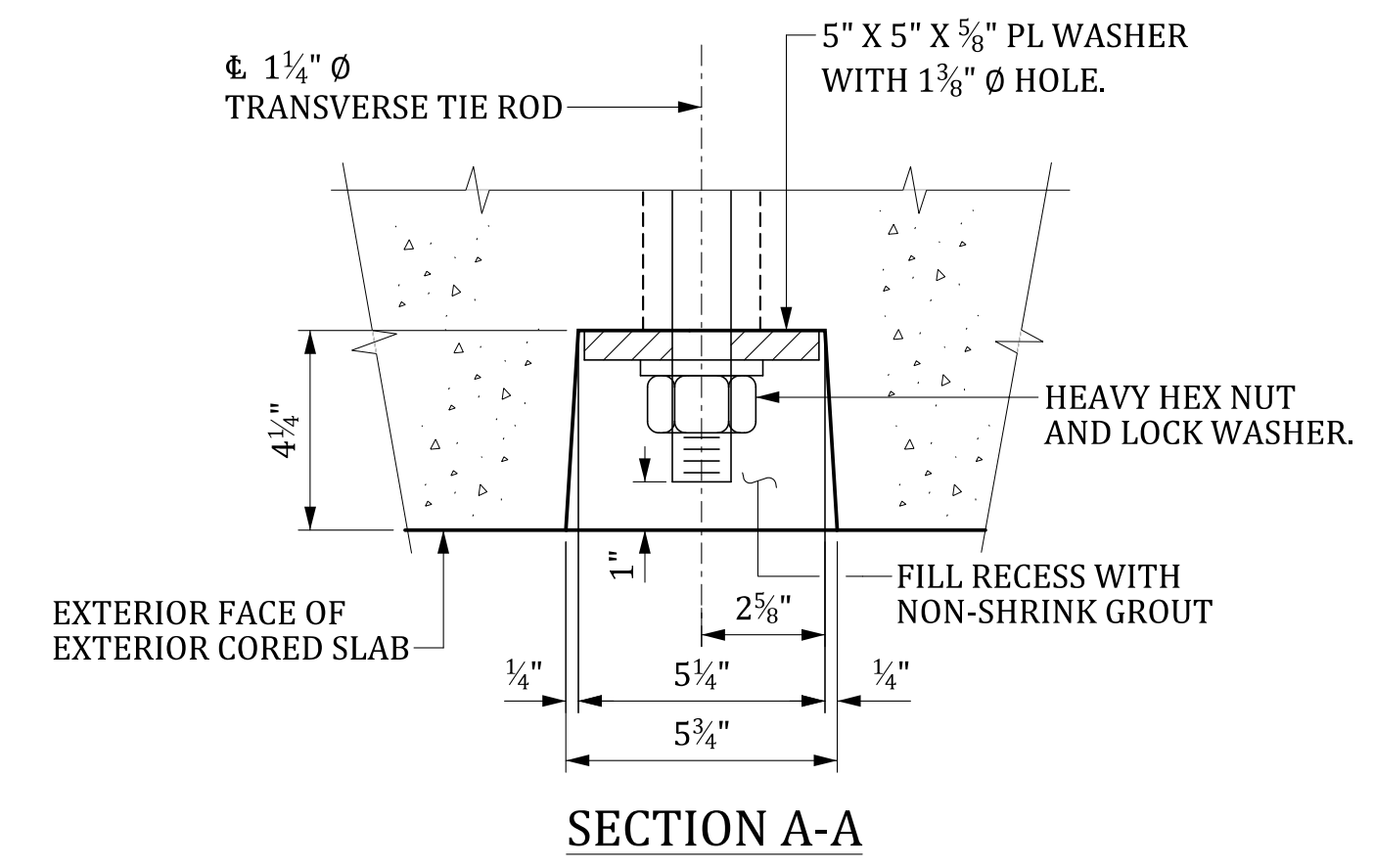
NOTE:
BOND SHALL BE BROKEN ON STRANDS AS SHOWN FOR THE SPECIFIED LENGTH FROM EACH END OF THE CORED SLAB. SEE NOTES ON "PRESTRESSED CONCRETE CORED SLAB TYPICAL SUPERSTRUCTURE SECTION" SHEET.

DESIGN DATA	
STRANDS:	0.6"Ø LOW RELAXATION GRADE 270
	AREA=0.217 SQ. IN.
	TENSIONING LOAD = 43.9 KIPS
CONCRETE:	f'c = 6.0 KSI
	f'ci = 4.8 KSI



ELEVATION

TIE ROD ASSEMBLY NOT SHOWN.



SECTION A-A

TIE ROD POCKET DETAIL

EXTERIOR FACE OF EXTERIOR SLAB.

NOTE:
FOR DIAPHRAGM DIMENSIONS AND LAYOUT, SEE "PRESTRESSED CONCRETE CORED SLAB 60' SPAN-PLAN" SHEET.

STIRRUPS AND VERTICAL BARRIER REINFORCEMENT MAY BE SHIFTED SLIGHTLY TO CLEAR HOLES FOR TIE RODS.

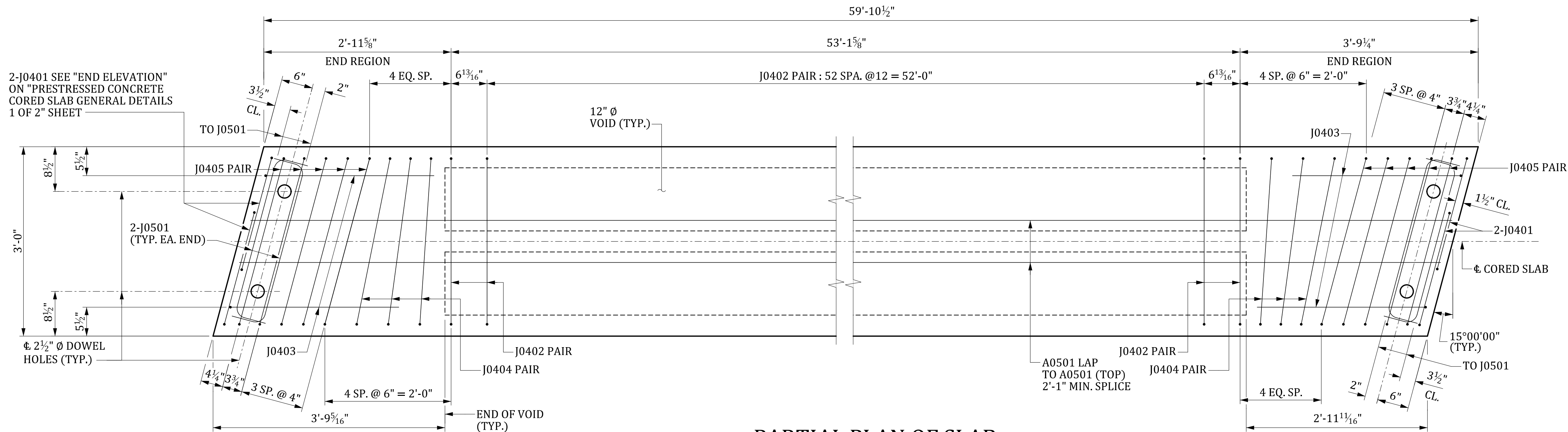
THIS DRAWING IS FURNISHED FOR INFORMATION ONLY. ALL DIMENSIONS SHOWN ARE SHEET SPECIFIC. ANY USE OF THIS DESIGN AND DRAWING, INCLUDING DIMENSIONS, MUST BE CHECKED BY THE USER'S ENGINEER TO ENSURE DESIGN IS ADEQUATE FOR THE INTENDED USE. ALL DRAWINGS MUST BE SIGNED AND SEALED BY A SOUTH CAROLINA REGISTERED PROFESSIONAL ENGINEER WHEN USED.

CONSULTANT NAME/LOGO	
SOUTH CAROLINA DEPARTMENT OF TRANSPORTATION	
PRESTRESSED CONCRETE CORED SLAB 60' SPAN DETAILS (0° SKEW)	
COUNTY: ####	ROUTE: ####

MBreland 6/25/2024 5:22:20 PM 704_ACS_060.dgn

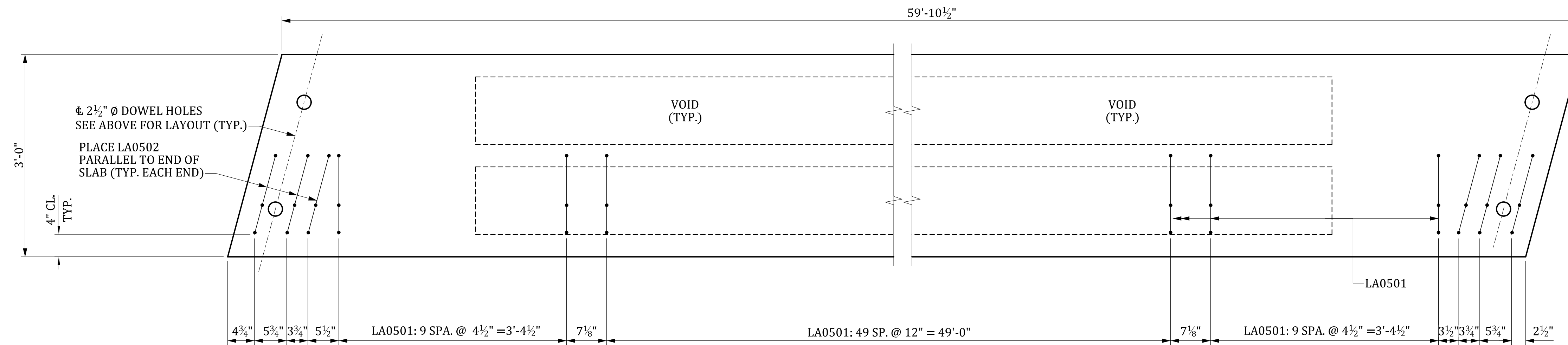
REV.	DATE	BY	CHK.	DESCRIPTION OF REVISION

REVIEWED	QUAN.	CTM	GCM	05-23
DR.	DES.	OP.	SJA	08-23
BY	CHK.	DATE		



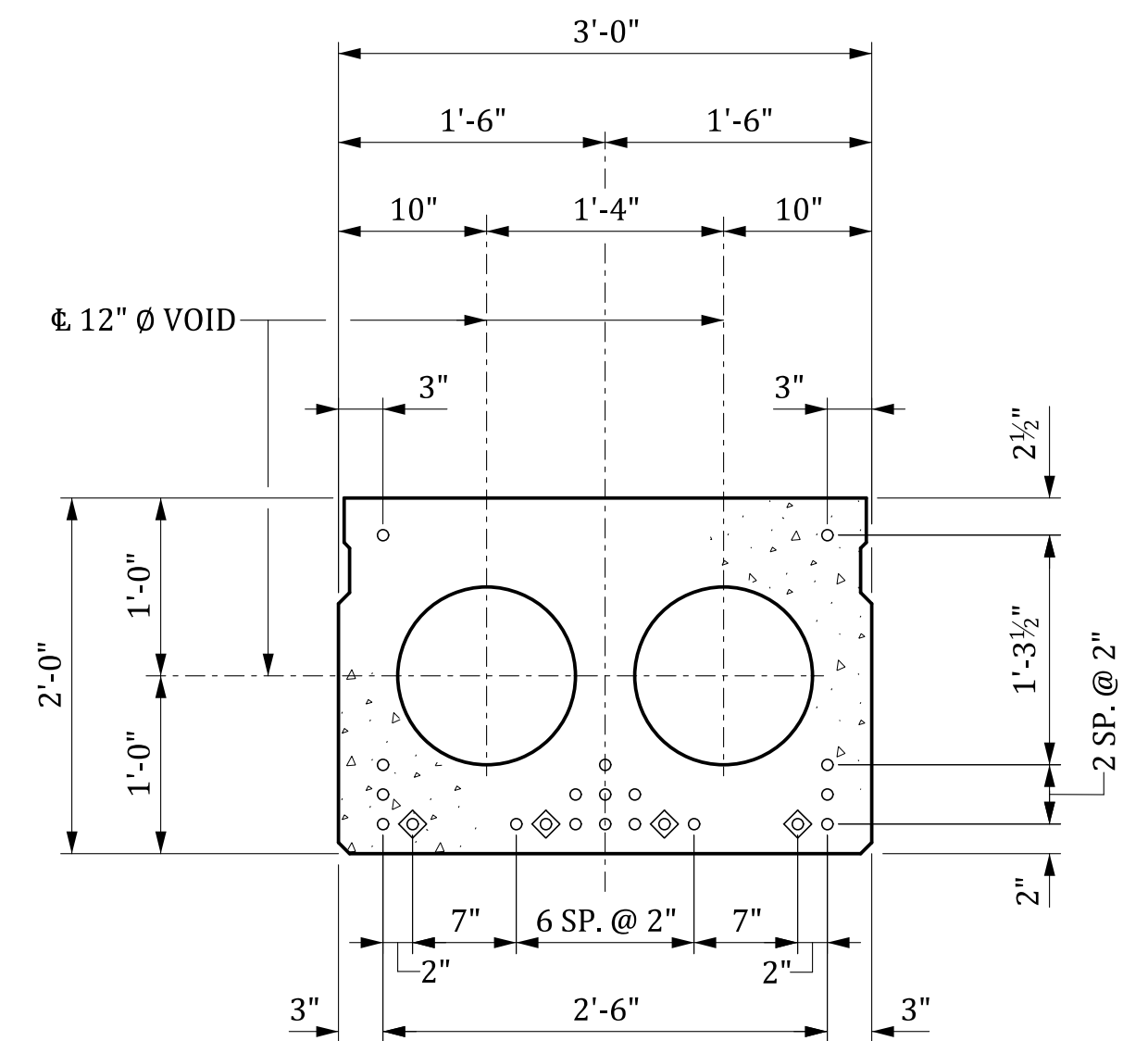
PARTIAL PLAN OF SLAB

STRANDS NOT SHOWN.
INTERIOR SLAB SHOWN, EXTERIOR SLAB SIMILAR EXCEPT BARRIER REINFORCEMENT. SEE BELOW.



PARTIAL PLAN OF EXTERIOR SLAB

SHOWING PLACEMENT OF LA0501 AND LA0502 BARS FOR MASH BARRIER PARAPET.
"LA05" BARS MAY BE SHIFTED SLIGHTLY TO AVOID STIRRUPS.



STRAND LAYOUT

INTERIOR SLAB SHOWN - EXTERIOR SLAB SIMILAR EXCEPT SHEAR KEY LOCATION.

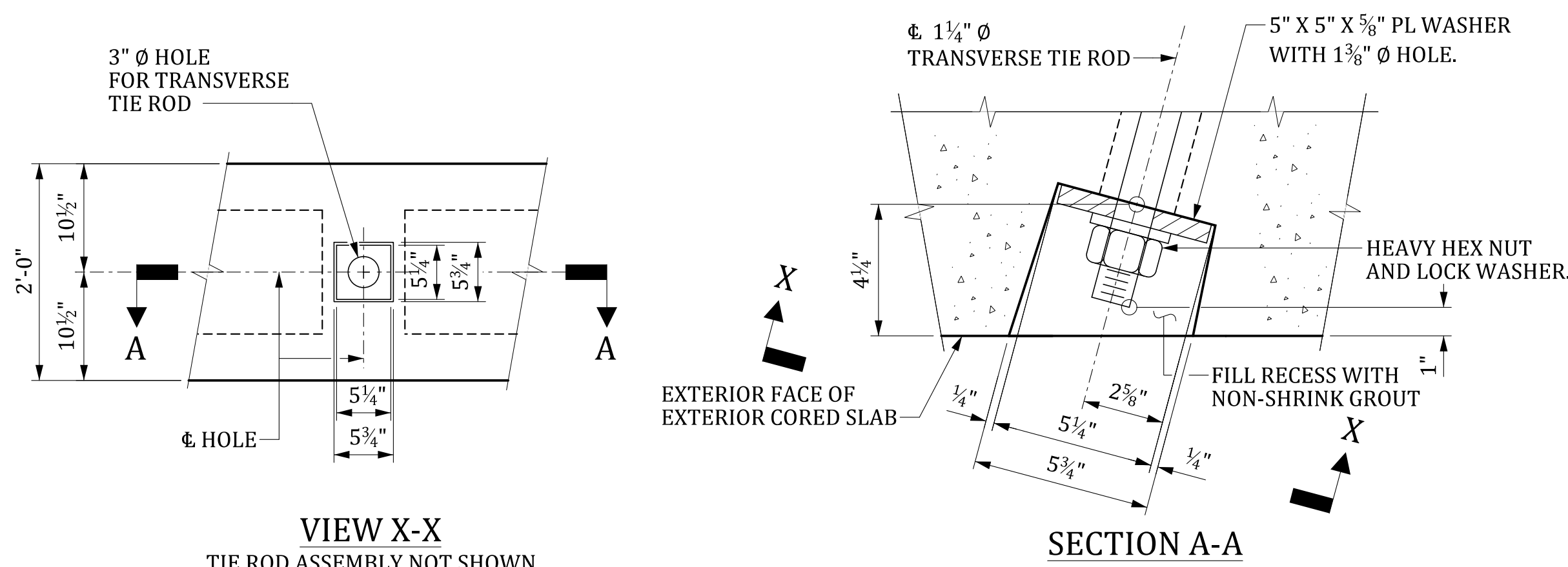
- FULLY BONDED STRANDS
- ◊ DEBONDED STRANDS FOR 6'-0" FROM END OF SLAB

NOTE:
BOND SHALL BE BROKEN ON STRANDS AS SHOWN FOR THE SPECIFIED LENGTH FROM EACH END OF THE CORED SLAB. SEE NOTES ON "PRESTRESSED CONCRETE CORED SLAB TYPICAL SUPERSTRUCTURE SECTION" SHEET.

DESIGN DATA

STRANDS:
0.6"Ø LOW RELAXATION GRADE 270
AREA=0.217 SQ. IN.
TENSIONING LOAD = 43.9 KIPS

CONCRETE:
f'c = 6.0 KSI
f'ci = 4.8 KSI



TIE ROD POCKET DETAIL

EXTERIOR FACE OF EXTERIOR SLAB.

NOTE:
FOR DIAPHRAGM DIMENSIONS AND LAYOUT, SEE "PRESTRESSED CONCRETE CORED SLAB 60' SPAN-PLAN" SHEET.

STIRRUPS AND VERTICAL BARRIER REINFORCEMENT MAY BE SHIFTED SLIGHTLY TO CLEAR HOLES FOR TIE RODS.

THIS DRAWING IS FURNISHED FOR INFORMATION ONLY. ALL DIMENSIONS SHOWN ARE SHEET SPECIFIC. ANY USE OF THIS DESIGN AND DRAWING, INCLUDING DIMENSIONS, MUST BE CHECKED BY THE USER'S ENGINEER TO ENSURE DESIGN IS ADEQUATE FOR THE INTENDED USE. ALL DRAWINGS MUST BE SIGNED AND SEALED BY A SOUTH CAROLINA REGISTERED PROFESSIONAL ENGINEER WHEN USED.

CONSULTANT NAME/LOGO

SOUTH CAROLINA
DEPARTMENT OF TRANSPORTATION

**PRESTRESSED CONCRETE CORED SLAB
60' SPAN DETAILS
(+15° SKEW)**

COUNTY: ####

ROUTE: ####

DRAWING NUMBER: 704-ACS.S060.SK015.D01

MBreeland 6/25/2024 5:22:16 PM 704_ACS_060.dgn	
REV.	DESCRIPTION OF REVISION

REVIEWED	CTM	GCM	05-23
QUAN	CTM	MWB	05-23
DR.	OP	SJA	08-23
DES.	BY	CHK.	DATE