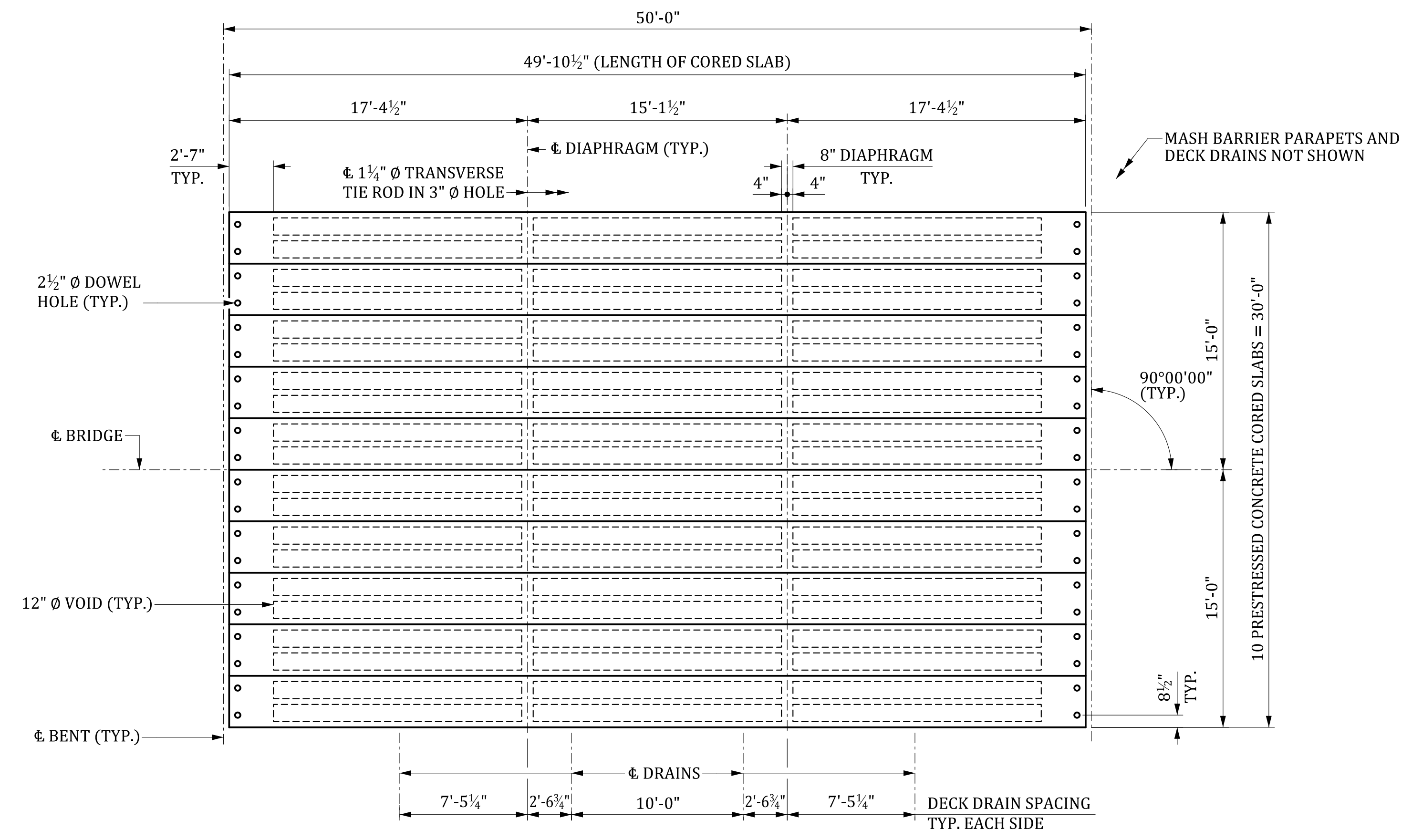
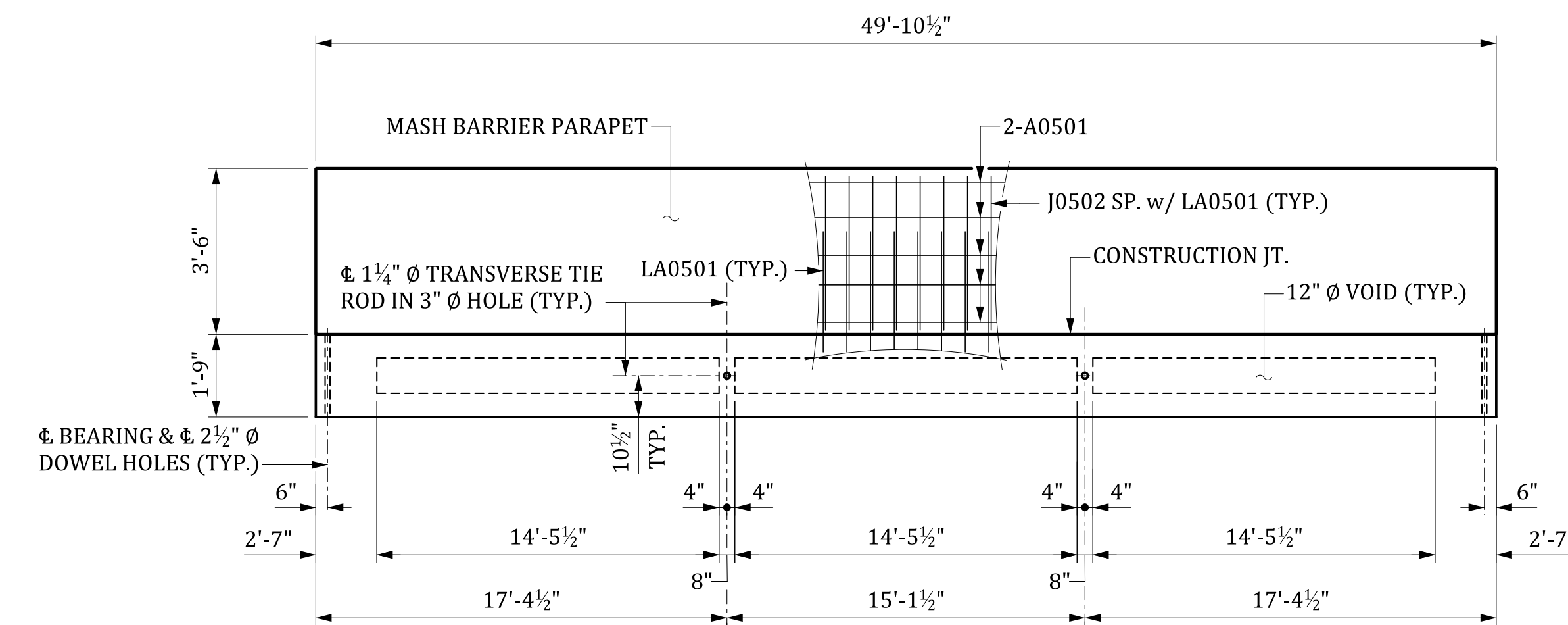




DEAD LOAD DEFLECTION & CAMBER	
CAMBER AT ERECTION (SLAB ALONE IN PLACE)	↑ 2"
DEFLECTION DUE TO BARRIER PARAPETS AND ASPHALT WEARING SURFACE	↓ X"
FINAL CAMBER	↑ X"



PLAN



ELEVATION

DECK DRAINS AND TIE ROD POCKETS NOT SHOWN.  
FOR CORED SLAB REINFORCING STEEL LAYOUT, SEE "PRESTRESSED CONCRETE CORED SLAB 50' SPAN DETAILS" SHEET.

BILL OF MATERIAL ONE 50' CORED SLAB							
MARK	NO. REQ'D	DIMENSION					LENGTH
		"a"	"b"	"c"	"d"	"e"	
A0401	4	25'-9"					25'-9"
J0401	8	1'-9½"	1'-6"				4'-10"
J0402	120	2'-8"	1'-6"				5'-8"
J0403	4	1'-5½"	2'-8"				6'-10"
J0501	8	2'-7"	6"				3'-7"
LA0501	① 66	5½"					7'-7"

QUANTITIES			
ITEM	UNIT	INTERIOR	EXTERIOR
REINFORCING STEEL	LB	597	1,119
CONCRETE, f'c 6,000	CY	7.1	7.1
0.6" ϕ L.R. STRANDS	LF	898	898

① LA0501 BARS REQUIRED FOR EXTERIOR SLABS ONLY.

BILL OF MATERIAL ONE 50' BARRIER PARAPET							
MARK	NO. REQ'D	DIMENSION					LENGTH
		"a"	"b"	"c"	"d"	"e"	
A0501	10	49'-6"					49'-6"
A0502	8	5'-0"					5'-0"
J0502	66	5½"	3'-3"				7'-0"

QUANTITIES		
ITEM	UNIT	TOTAL
2.0" SCHEDULE 80 PVC CONDUIT	LF	100.0
REINFORCING STEEL	LB	1,040
MASH CONCRETE BARRIER PARAPET	LF	50.0

ESTIMATED QUANTITIES - ONE 50' SPAN		
ITEM	UNIT	TOTAL
2.0" SCHEDULE 80 PVC CONDUIT	LF	200.0
REINFORCING STEEL FOR STRUCTURES (BRIDGE)	LB	2,080
3'-0" X 1'-9" CORED SLABS	LF	498.8
MASH CONCRETE BARRIER PARAPET	LF	100.0
ELASTOMERIC BEARING	EA	20
BRIDGE DECK WATERPROOFING	SY	154.6

NOTE:

FOR ADDITIONAL DETAILS, SEE PRESTRESSED CONCRETE CORED SLAB DETAILS SHEETS.

THIS DRAWING IS FURNISHED FOR INFORMATION ONLY. ALL DIMENSIONS SHOWN ARE SHEET SPECIFIC. ANY USE OF THIS DESIGN AND DRAWING, INCLUDING DIMENSIONS, MUST BE CHECKED BY THE USER'S ENGINEER TO ENSURE DESIGN IS ADEQUATE FOR THE INTENDED USE. ALL DRAWINGS MUST BE SIGNED AND SEALED BY A SOUTH CAROLINA REGISTERED PROFESSIONAL ENGINEER WHEN USED.

CONSULTANT NAME/LOGO

SOUTH CAROLINA DEPARTMENT OF TRANSPORTATION

**PRESTRESSED CONCRETE CORED SLAB**  
50' SPAN  
27'-10" ROADWAY (0° SKEW)

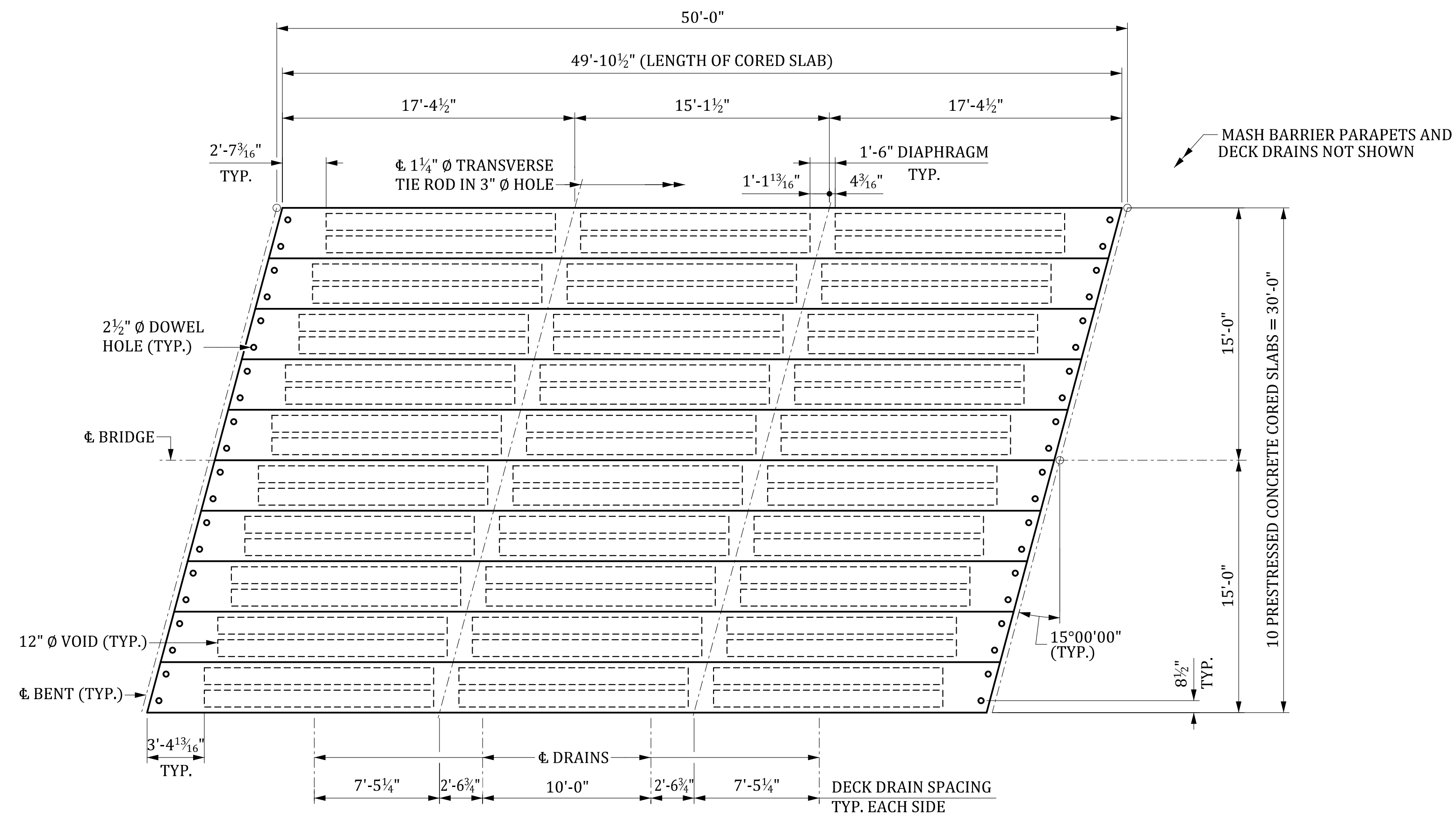
COUNTY: #### ROUTE: ####

MBreeland 6/25/2024 5:21:47 PM 704\_ACS\_050.dgn

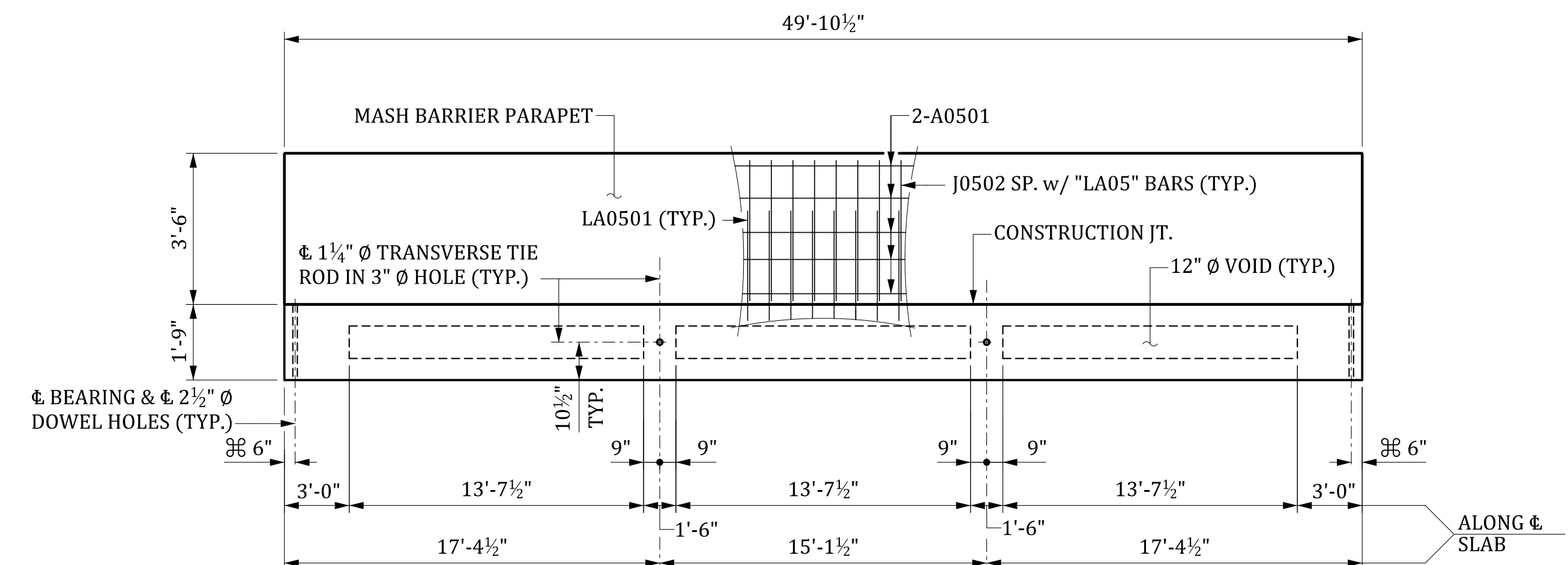
REV.	BY	CHK.	DATE	DESCRIPTION OF REVISION

REVIEWED	CTM	GCM	05-23
QUAN.	CTM	MWB	05-23
DR.	OP	DPP	10-23
DES.	BY	CHK.	DATE

DEAD LOAD DEFLECTION & CAMBER	
CAMBER AT ERECTION (SLAB ALONE IN PLACE)	↑ 2"
DEFLECTION DUE TO BARRIER PARAPETS AND ASPHALT WEARING SURFACE	↓ X"
FINAL CAMBER	↑ X"



PLAN



ELEVATION

DECK DRAINS AND TIE ROD POCKETS NOT SHOWN.  
FOR CORED SLAB REINFORCING STEEL LAYOUT, SEE "PRESTRESSED CONCRETE CORED SLAB 50' SPAN DETAILS" SHEET.

BILL OF MATERIAL ONE 50' CORED SLAB							
MARK	NO. REQ'D	DIMENSION					LENGTH
		"a"	"b"	"c"	"d"	"e"	
A0401	4	25'-9"	---	---	---	---	25'-9"
J0401	8	1'-10 1/2"	1'-6"	---	---	---	4'-11"
J0402	90	2'-8"	1'-6"	---	---	---	5'-8"
J0403	4	1'-5 1/2"	2'-8"	---	---	---	6'-10"
J0404	12	2'-8 1/2"	1'-6"	---	---	---	5'-9"
J0405	20	2'-9"	1'-6"	---	---	---	5'-9"
J0501	8	2'-7"	6"	---	---	---	3'-7"
LA0501	① 60	5 1/2"	---	---	---	---	7'-7"
LA0502	① 6	5 3/4"	---	---	---	---	7'-7"

QUANTITIES			
ITEM	UNIT	INTERIOR	EXTERIOR
REINFORCING STEEL	LB	607	1,130
CONCRETE, Fc 6,000	CY	7.2	7.2
0.6" Ø L.R. STRANDS	LF	898	898

① "LA05" BARS REQUIRED FOR EXTERIOR SLABS ONLY.

BILL OF MATERIAL ONE 50' BARRIER PARAPET						
MARK	NO. REQ'D	DIMENSION				LENGTH
		"a"	"b"	"c"	"d"	
A0501	10	49'-6"	---	---	---	49'-6"
A0502	8	5'-0"	---	---	---	5'-0"
J0502	66	5 1/2"	3'-3"	---	---	7'-0"

QUANTITIES		
ITEM	UNIT	TOTAL
2.0" SCHEDULE 80 PVC CONDUIT	LF	100.0
REINFORCING STEEL	LB	1,040
MASH CONCRETE BARRIER PARAPET	LF	50.0

ESTIMATED QUANTITIES - ONE 50' SPAN		
ITEM	UNIT	TOTAL
2.0" SCHEDULE 80 PVC CONDUIT	LF	200.0
REINFORCING STEEL FOR STRUCTURES (BRIDGE)	LB	2,080
3'-0" X 1'-9" CORED SLABS	LF	498.8
MASH CONCRETE BARRIER PARAPET	LF	100.0
ELASTOMERIC BEARING	EA	20
BRIDGE DECK WATERPROOFING	SY	154.6

NOTE:  
FOR ADDITIONAL DETAILS, SEE PRESTRESSED CONCRETE CORED SLAB DETAILS SHEETS.

THIS DRAWING IS FURNISHED FOR INFORMATION ONLY. ALL DIMENSIONS SHOWN ARE SHEET SPECIFIC. ANY USE OF THIS DESIGN AND DRAWING, INCLUDING DIMENSIONS, MUST BE CHECKED BY THE USER'S ENGINEER TO ENSURE DESIGN IS ADEQUATE FOR THE INTENDED USE. ALL DRAWINGS MUST BE SIGNED AND SEALED BY A SOUTH CAROLINA REGISTERED PROFESSIONAL ENGINEER WHEN USED.

CONSULTANT NAME/LOGO

SOUTH CAROLINA  
DEPARTMENT OF TRANSPORTATION

**PRESTRESSED CONCRETE CORED SLAB**  
**50' SPAN**  
**27'-10" ROADWAY (+15° SKEW)**

COUNTY: #### ROUTE: ####

REV.	BY	CHK.	DATE	DESCRIPTION OF REVISION

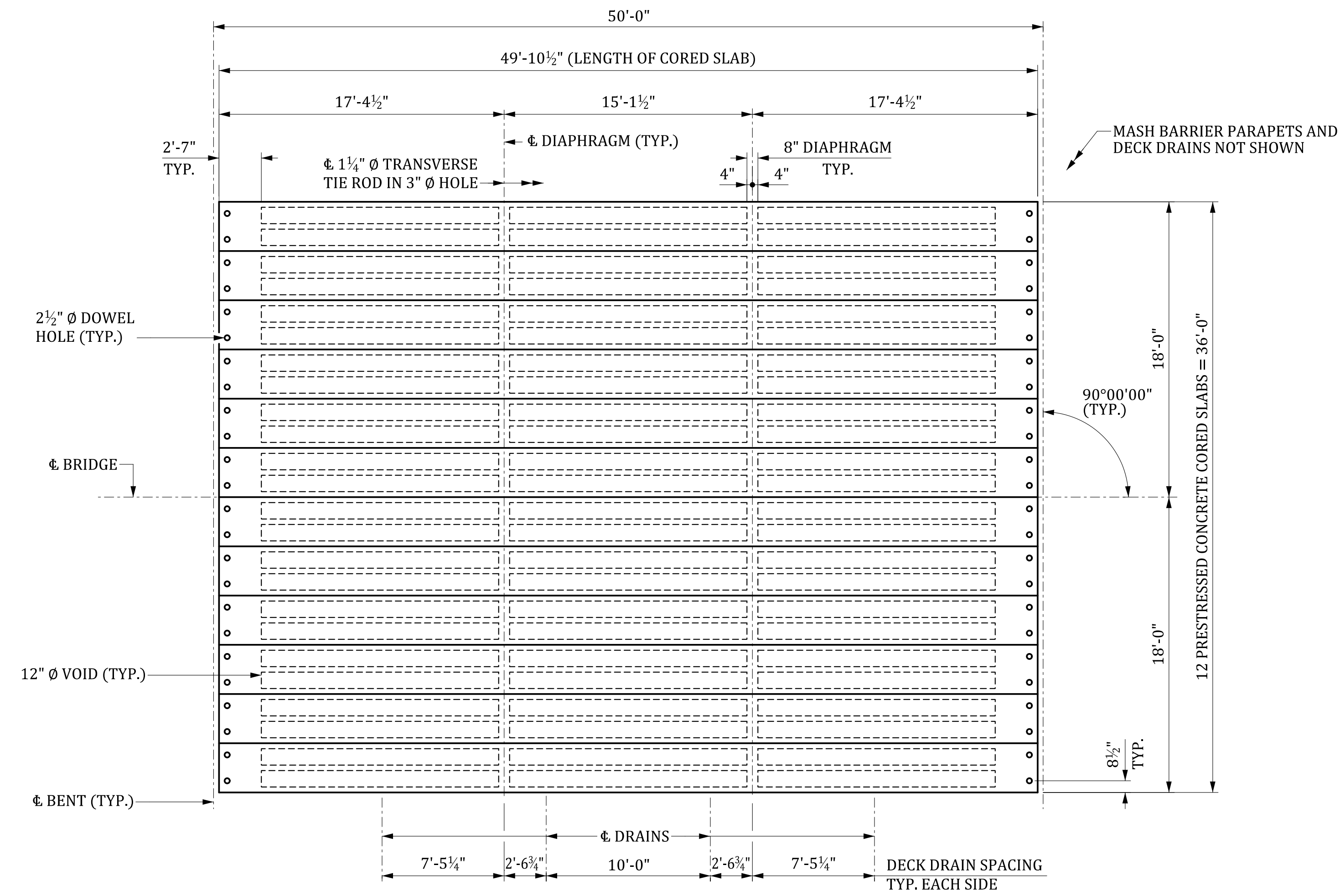
REVIEWED	CTM	GCM	05-23
QUAN.	CTM	MWB	05-23
DR.	OP	DPP	10-23
DES.	BY	CHK.	DATE

MBreeland 6/25/2024 5:21:45 PM 704\_ACS\_050.dgn

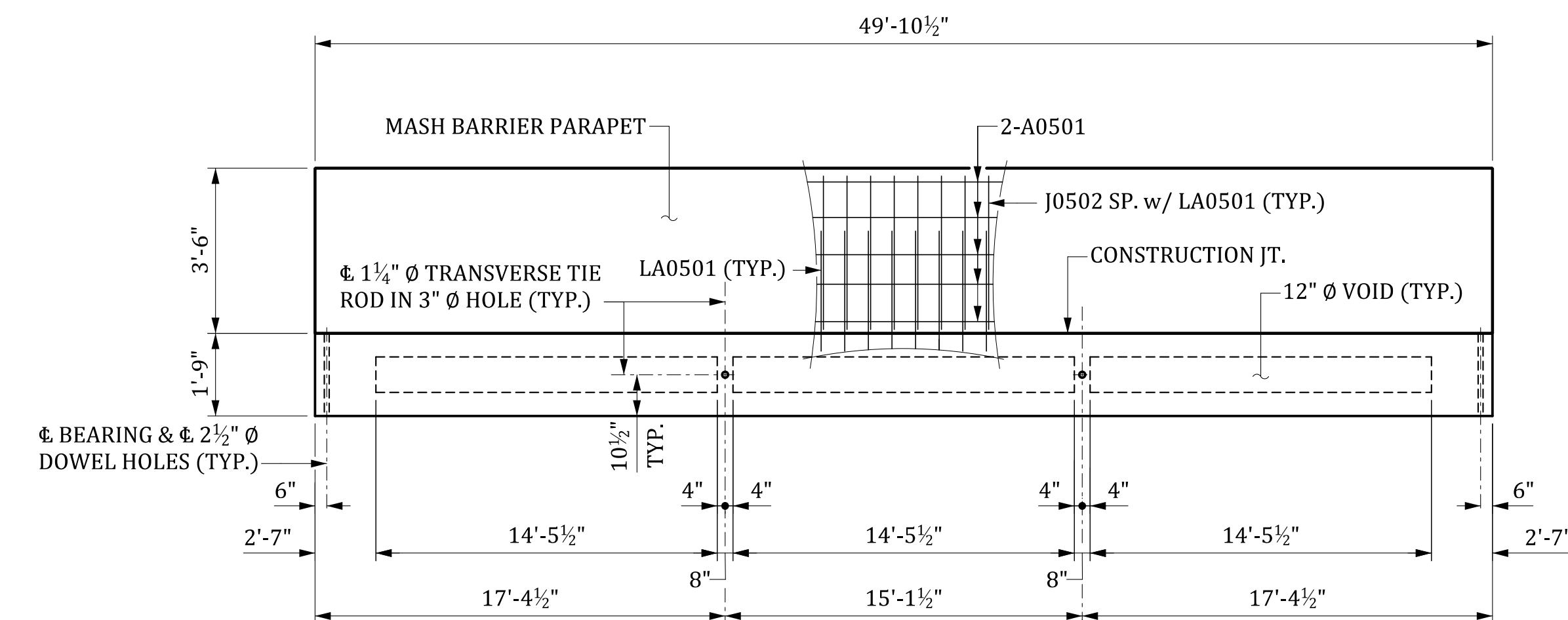
⊗ NORMAL TO END OF SLAB



DEAD LOAD DEFLECTION & CAMBER	
CAMBER AT ERECTION (SLAB ALONE IN PLACE)	↑ 2"
DEFLECTION DUE TO BARRIER PARAPETS AND ASPHALT WEARING SURFACE	↓ X"
FINAL CAMBER	↑ X"



PLAN



ELEVATION

DECK DRAINS AND TIE ROD POCKETS NOT SHOWN.  
FOR CORED SLAB REINFORCING STEEL LAYOUT, SEE "PRESTRESSED CONCRETE CORED SLAB 50' SPAN DETAILS" SHEET.

BILL OF MATERIAL ONE 50' CORED SLAB							
MARK	NO. REQ'D	DIMENSION					LENGTH
		"a"	"b"	"c"	"d"	"e"	
A0401	4	25'-9"					25'-9"
J0401	8	1'-9 1/2"	1'-6"				4'-10"
J0402	120	2'-8"	1'-6"				5'-8"
J0403	4	1'-5 1/2"	2'-8"				6'-10"
J0501	8	2'-7"	6"				3'-7"
LA0501	① 66	5 1/2"					7'-7"

QUANTITIES			
ITEM	UNIT	INTERIOR	EXTERIOR
REINFORCING STEEL	LB	597	1,119
CONCRETE, f'c 6,000	CY	7.1	7.1
0.6" Ø L.R. STRANDS	LF	898	898

① LA0501 BARS REQUIRED FOR EXTERIOR SLABS ONLY.

BILL OF MATERIAL ONE 50' BARRIER PARAPET							
MARK	NO. REQ'D	DIMENSION					LENGTH
		"a"	"b"	"c"	"d"	"e"	
A0501	10	49'-6"					49'-6"
A0502	8	5'-0"					5'-0"
J0502	66	5 1/2"	3'-3"				7'-0"

QUANTITIES		
ITEM	UNIT	TOTAL
2.0" SCHEDULE 80 PVC CONDUIT	LF	100.0
REINFORCING STEEL	LB	1,040
MASH CONCRETE BARRIER PARAPET	LF	50.0

ESTIMATED QUANTITIES - ONE 50' SPAN		
ITEM	UNIT	TOTAL
2.0" SCHEDULE 80 PVC CONDUIT	LF	200.0
REINFORCING STEEL FOR STRUCTURES (BRIDGE)	LB	2,080
3'-0" X 1'-9" CORED SLABS	LF	598.5
MASH CONCRETE BARRIER PARAPET	LF	100.0
ELASTOMERIC BEARING	EA	24
BRIDGE DECK WATERPROOFING	SY	188.0

NOTE:  
FOR ADDITIONAL DETAILS, SEE PRESTRESSED CONCRETE CORED SLAB DETAILS SHEETS.

THIS DRAWING IS FURNISHED FOR INFORMATION ONLY. ALL DIMENSIONS SHOWN ARE SHEET SPECIFIC. ANY USE OF THIS DESIGN AND DRAWING, INCLUDING DIMENSIONS, MUST BE CHECKED BY THE USER'S ENGINEER TO ENSURE DESIGN IS ADEQUATE FOR THE INTENDED USE. ALL DRAWINGS MUST BE SIGNED AND SEALED BY A SOUTH CAROLINA REGISTERED PROFESSIONAL ENGINEER WHEN USED.

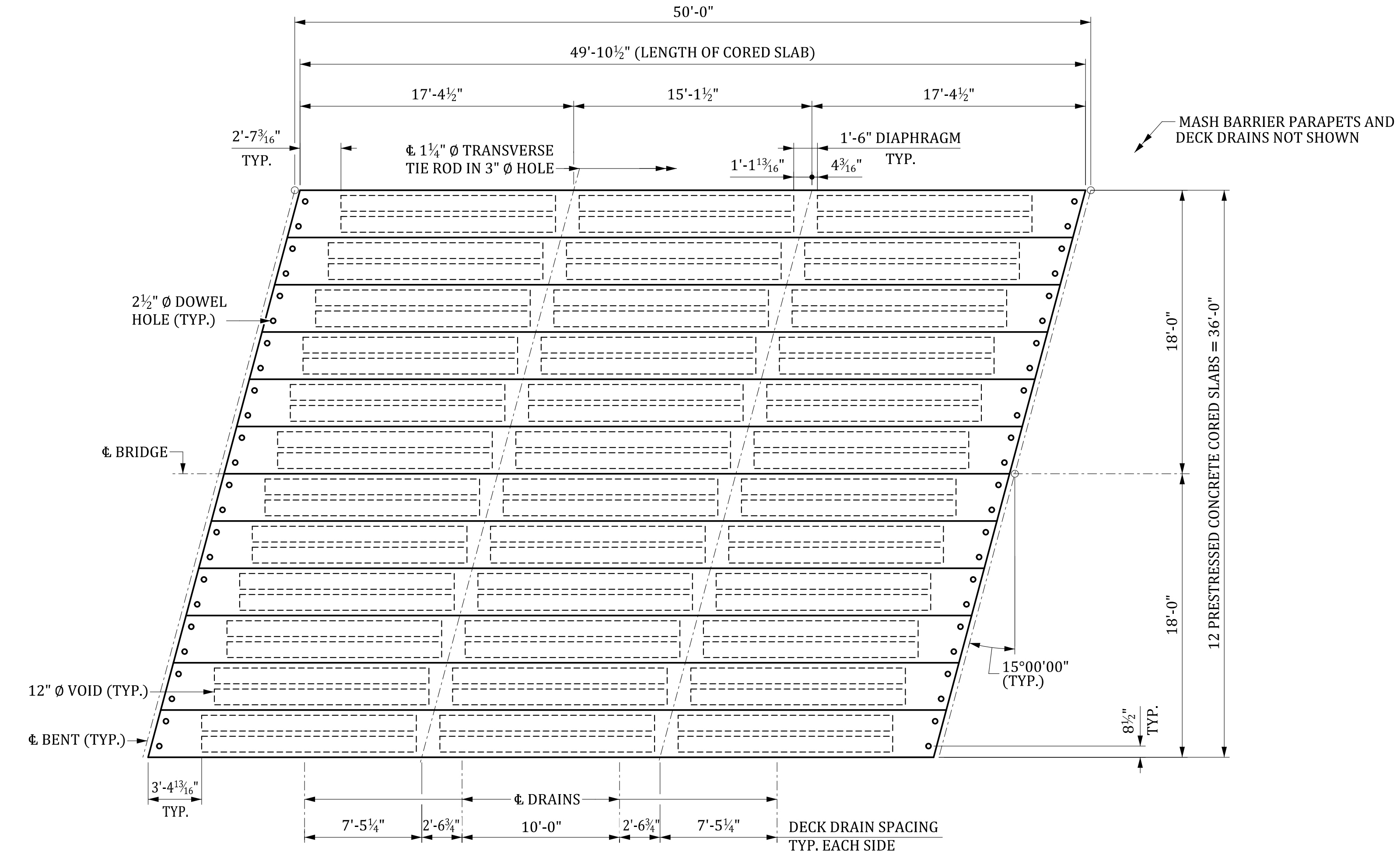
CONSULTANT NAME/LOGO	
SOUTH CAROLINA DEPARTMENT OF TRANSPORTATION	
PRESTRESSED CONCRETE CORED SLAB 50' SPAN 33'-10" ROADWAY (0° SKEW)	
COUNTY: ###	ROUTE: ###

REV.	BY	CHK.	DATE	DESCRIPTION OF REVISION

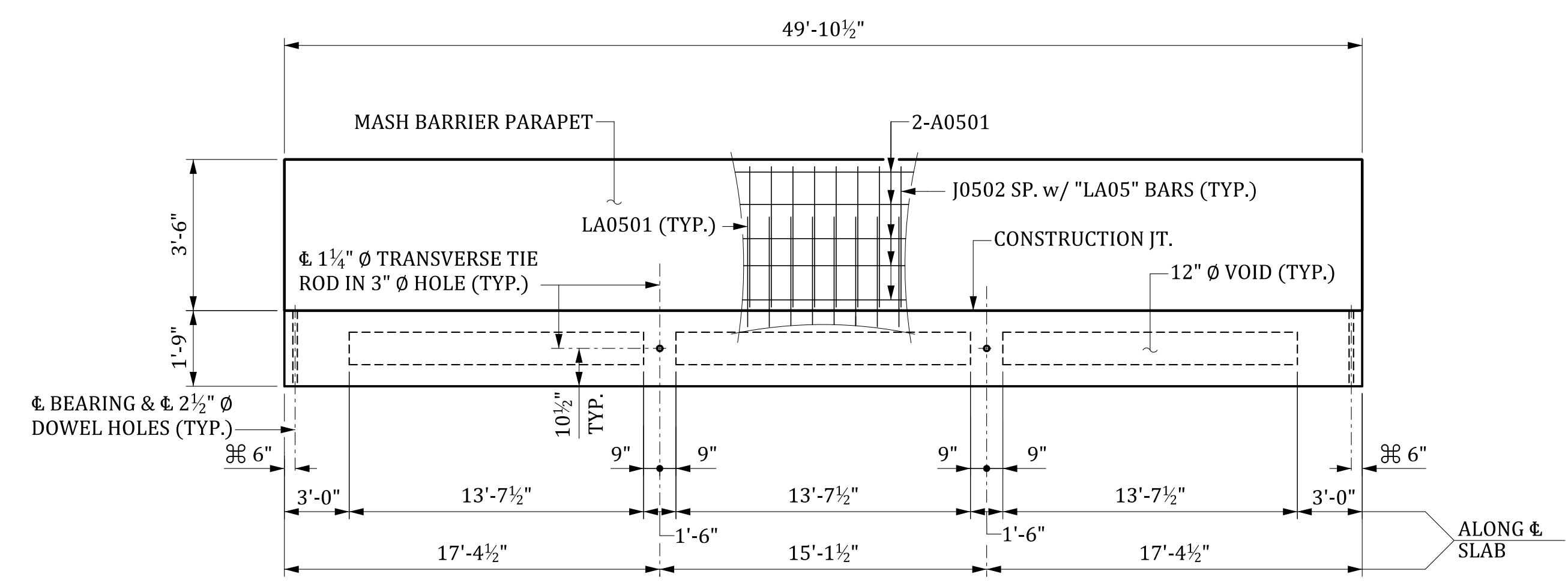
REVIEWED	CTM	GCM	05-23
QUAN.	CTM	MWB	05-23
DR.	OP	DPP	10-23
DES.	BY	CHK.	DATE

MBreeland 6/25/2024 5:21:51 PM 704\_ACS\_050.dgn

DEAD LOAD DEFLECTION & CAMBER	
CAMBER AT ERECTION (SLAB ALONE IN PLACE)	↑ 2"
DEFLECTION DUE TO BARRIER PARAPETS AND ASPHALT WEARING SURFACE	↓ X"
FINAL CAMBER	↑ X"



PLAN



ELEVATION

DECK DRAINS AND TIE ROD POCKETS NOT SHOWN.  
FOR CORED SLAB REINFORCING STEEL LAYOUT, SEE "PRESTRESSED CONCRETE CORED SLAB 50' SPAN DETAILS" SHEET.

BILL OF MATERIAL ONE 50' CORED SLAB							
MARK	NO. REQ'D	DIMENSION					LENGTH
		"a"	"b"	"c"	"d"	"e"	
A0401	4	25'-9"	---	---	---	---	25'-9"
J0401	8	1'-10 1/2"	1'-6"	---	---	---	4'-11"
J0402	90	2'-8"	1'-6"	---	---	---	5'-8"
J0403	4	1'-5 1/2"	2'-8"	---	---	---	6'-10"
J0404	12	2'-8 1/2"	1'-6"	---	---	---	5'-9"
J0405	20	2'-9"	1'-6"	---	---	---	5'-9"
J0501	8	2'-7"	6"	---	---	---	3'-7"
LA0501	① 60	5 1/2"	---	---	---	---	7'-7"
LA0502	① 6	5 3/4"	---	---	---	---	7'-7"

QUANTITIES			
ITEM	UNIT	INTERIOR	EXTERIOR
REINFORCING STEEL	LB	607	1,130
CONCRETE, Fc 6,000	CY	7.2	7.2
0.6" Ø L.R. STRANDS	LF	898	898

① "LA05" BARS REQUIRED FOR EXTERIOR SLABS ONLY.

BILL OF MATERIAL ONE 50' BARRIER PARAPET						
MARK	NO. REQ'D	DIMENSION				LENGTH
		"a"	"b"	"c"	"d"	
A0501	10	49'-6"	---	---	---	49'-6"
A0502	8	5'-0"	---	---	---	5'-0"
J0502	66	5 1/2"	3'-3"	---	---	7'-0"

QUANTITIES		
ITEM	UNIT	TOTAL
2.0" SCHEDULE 80 PVC CONDUIT	LF	100.0
REINFORCING STEEL	LB	1,040
MASH CONCRETE BARRIER PARAPET	LF	50.0

ESTIMATED QUANTITIES - ONE 50' SPAN		
ITEM	UNIT	TOTAL
2.0" SCHEDULE 80 PVC CONDUIT	LF	200.0
REINFORCING STEEL FOR STRUCTURES (BRIDGE)	LB	2,080
3'-0" X 1'-9" CORED SLABS	LF	598.5
MASH CONCRETE BARRIER PARAPET	LF	100.0
ELASTOMERIC BEARING	EA	24
BRIDGE DECK WATERPROOFING	SY	188.0

NOTE:  
FOR ADDITIONAL DETAILS, SEE PRESTRESSED CONCRETE CORED SLAB DETAILS SHEETS.

THIS DRAWING IS FURNISHED FOR INFORMATION ONLY. ALL DIMENSIONS SHOWN ARE SHEET SPECIFIC. ANY USE OF THIS DESIGN AND DRAWING, INCLUDING DIMENSIONS, MUST BE CHECKED BY THE USER'S ENGINEER TO ENSURE DESIGN IS ADEQUATE FOR THE INTENDED USE. ALL DRAWINGS MUST BE SIGNED AND SEALED BY A SOUTH CAROLINA REGISTERED PROFESSIONAL ENGINEER WHEN USED.

CONSULTANT NAME/LOGO

SOUTH CAROLINA  
DEPARTMENT OF TRANSPORTATION

**PRESTRESSED CONCRETE CORED SLAB**  
**50' SPAN**  
**33'-10" ROADWAY (+15° SKEW)**

COUNTY: #### ROUTE: ####

REV.	BY	CHK.	DATE	DESCRIPTION OF REVISION

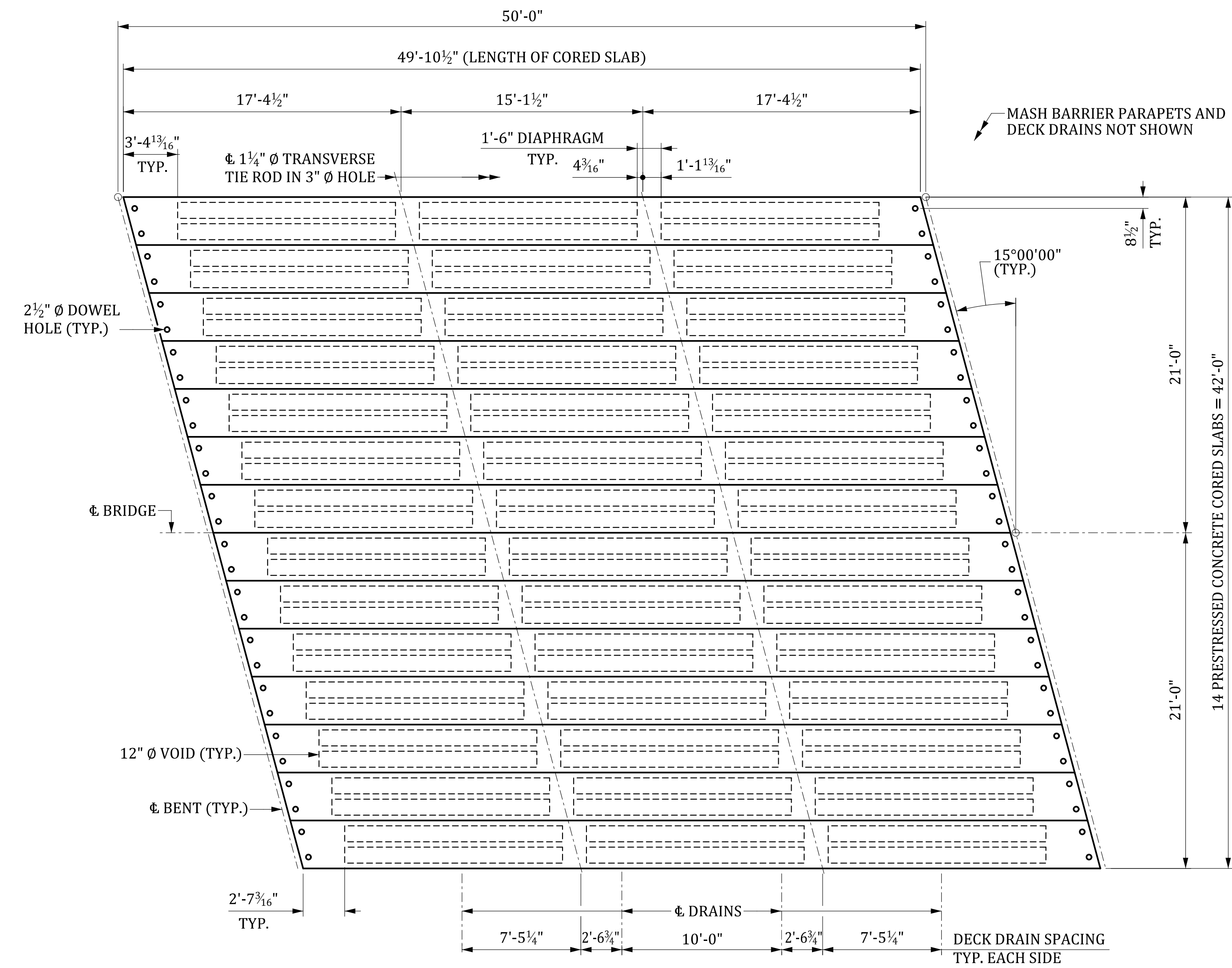
REVIEWED	CTM	GCM	05-23
QUAN.	CTM	MWB	05-23
DR.	OP	DPP	10-23
DES.	BY	CHK.	DATE

MBreeland 6/25/2024 5:21:48 PM 704\_ACS\_050.dgn

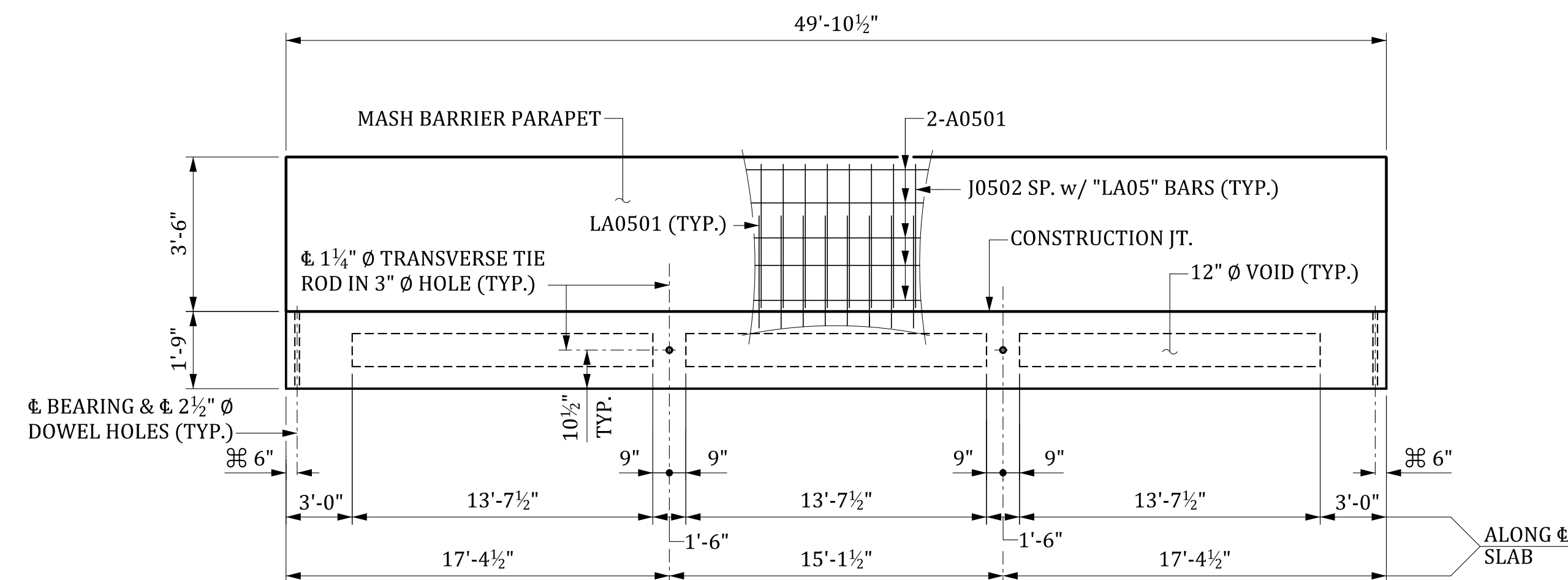
⊗ NORMAL TO END OF SLAB



DEAD LOAD DEFLECTION & CAMBER	
CAMBER AT ERECTION (SLAB ALONE IN PLACE)	↑ 2"
DEFLECTION DUE TO BARRIER PARAPETS AND ASPHALT WEARING SURFACE	↓ X"
FINAL CAMBER	↑ X"



PLAN



ELEVATION

⊘ NORMAL TO END OF SLAB

DECK DRAINS AND TIE ROD POCKETS NOT SHOWN.  
FOR CORED SLAB REINFORCING STEEL LAYOUT, SEE "PRESTRESSED CONCRETE CORED SLAB 50' SPAN DETAILS" SHEET.

BILL OF MATERIAL ONE 50' CORED SLAB							
MARK	NO. REQ'D	DIMENSION					LENGTH
		"a"	"b"	"c"	"d"	"e"	
A0401	4	25'-9"	—	—	—	—	25'-9"
J0401	8	1'-10 1/2"	1'-6"	—	—	—	4'-11"
J0402	90	2'-8"	1'-6"	—	—	—	5'-8"
J0403	4	1'-5 1/2"	2'-8"	—	—	—	6'-10"
J0404	12	2'-8 1/2"	1'-6"	—	—	—	5'-9"
J0405	20	2'-9"	1'-6"	—	—	—	5'-9"
J0501	8	2'-7"	6"	—	—	—	3'-7"
LA0501	① 60	5 1/2"	—	—	—	—	7'-7"
LA0502	① 6	5 3/4"	—	—	—	—	7'-7"

QUANTITIES			
ITEM	UNIT	INTERIOR	EXTERIOR
REINFORCING STEEL	LB	607	1,130
CONCRETE, Fc 6,000	CY	7.2	7.2
0.6" Ø L.R. STRANDS	LF	898	898

① "LA05" BARS REQUIRED FOR EXTERIOR SLABS ONLY.

BILL OF MATERIAL ONE 50' BARRIER PARAPET					
MARK	NO. REQ'D	DIMENSION			LENGTH
		"a"	"b"	"c"	
A0501	10	49'-6"	—	—	49'-6"
A0502	8	5'-0"	—	—	5'-0"
J0502	66	5 1/2"	3'-3"	—	7'-0"

QUANTITIES		
ITEM	UNIT	TOTAL
2.0" SCHEDULE 80 PVC CONDUIT	LF	100.0
REINFORCING STEEL	LB	1,040
MASH CONCRETE BARRIER PARAPET	LF	50.0

ESTIMATED QUANTITIES - ONE 50' SPAN		
ITEM	UNIT	TOTAL
2.0" SCHEDULE 80 PVC CONDUIT	LF	200.0
REINFORCING STEEL FOR STRUCTURES (BRIDGE)	LB	2,080
3'-0" X 1'-9" CORED SLABS	LF	698.3
MASH CONCRETE BARRIER PARAPET	LF	100.0
ELASTOMERIC BEARING	EA	28
BRIDGE DECK WATERPROOFING	SY	221.3

NOTE:

FOR ADDITIONAL DETAILS, SEE PRESTRESSED CONCRETE CORED SLAB DETAILS SHEETS.

THIS DRAWING IS FURNISHED FOR INFORMATION ONLY. ALL DIMENSIONS SHOWN ARE SHEET SPECIFIC. ANY USE OF THIS DESIGN AND DRAWING, INCLUDING DIMENSIONS, MUST BE CHECKED BY THE USER'S ENGINEER TO ENSURE DESIGN IS ADEQUATE FOR THE INTENDED USE. ALL DRAWINGS MUST BE SIGNED AND SEALED BY A SOUTH CAROLINA REGISTERED PROFESSIONAL ENGINEER WHEN USED.

CONSULTANT NAME/LOGO

SOUTH CAROLINA DEPARTMENT OF TRANSPORTATION

PRESTRESSED CONCRETE CORED SLAB 50' SPAN 39'-10" ROADWAY (-15° SKEW)

COUNTY: ####

ROUTE: ####

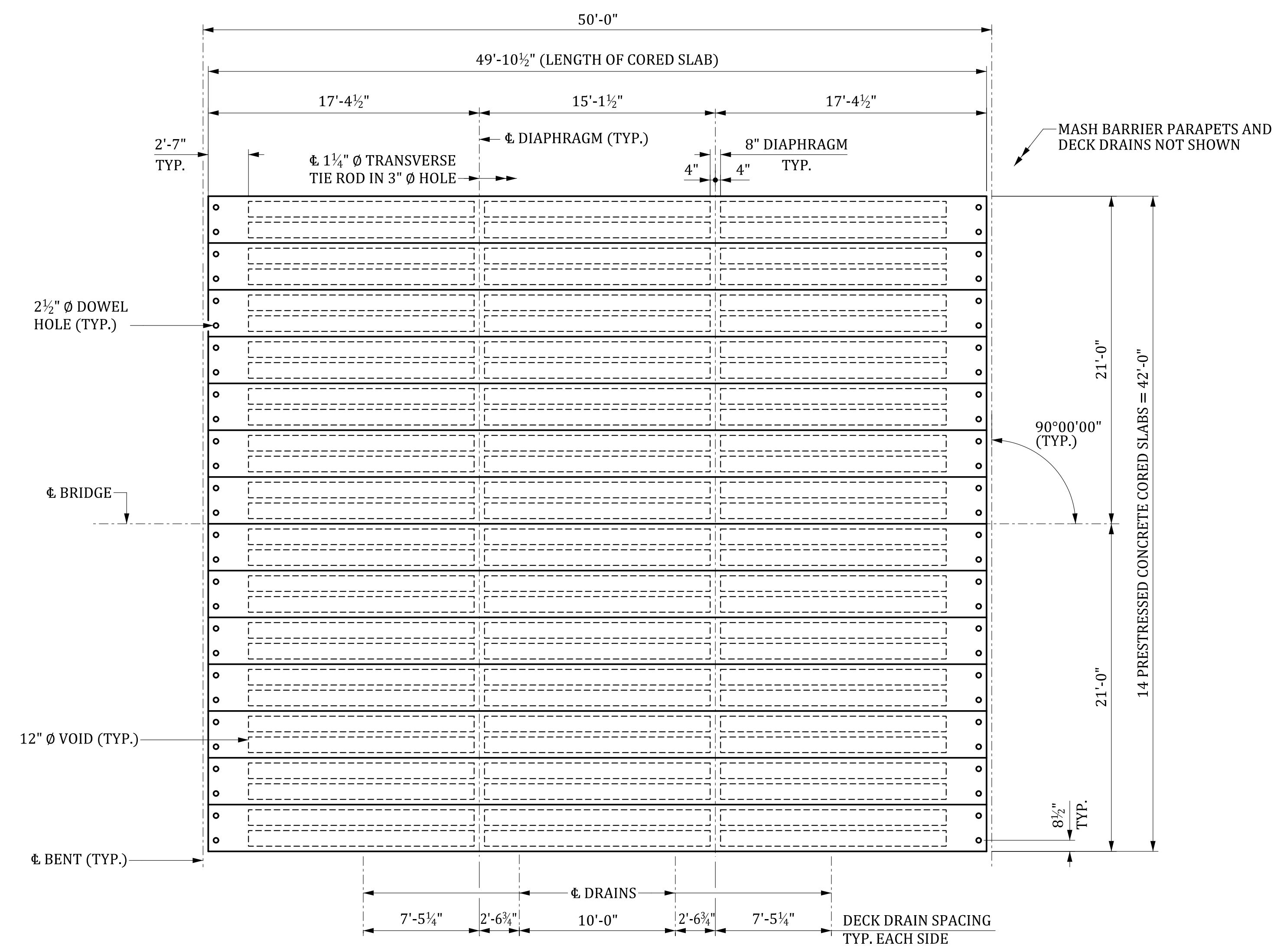
DRAWING NUMBER: 704-ACS.S050.R40.SK-15

REV.	BY	CHK.	DATE	DESCRIPTION OF REVISION

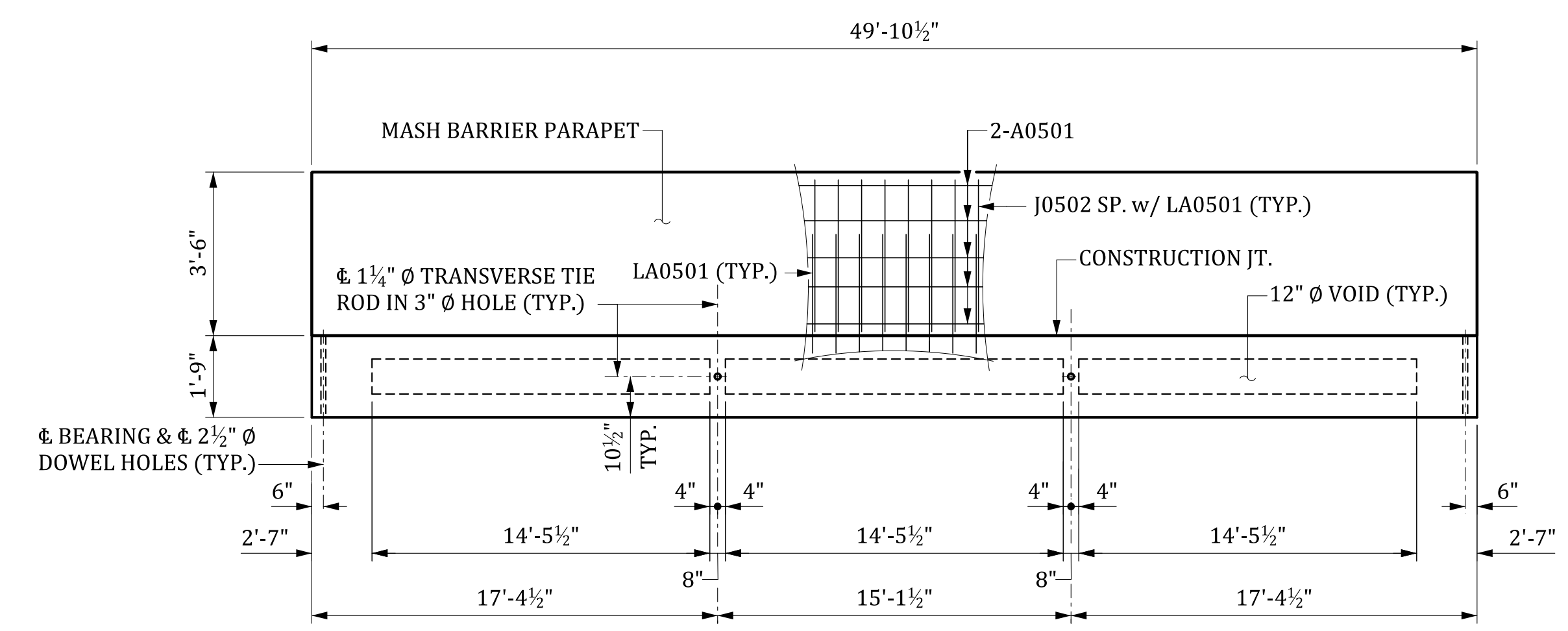
REVIEWED	CTM	GCM	05-23
QUAN.	CTM	MWB	05-23
DR.	OP	DPP	10-23
DES.	BY	CHK.	DATE

MBreeland 6/25/2024 5:21:52 PM 704\_ACS\_050.dgn

DEAD LOAD DEFLECTION & CAMBER	
CAMBER AT ERECTION (SLAB ALONE IN PLACE)	↑ 2"
DEFLECTION DUE TO BARRIER PARAPETS AND ASPHALT WEARING SURFACE	↓ X"
FINAL CAMBER	↑ X"



PLAN



ELEVATION

DECK DRAINS AND TIE ROD POCKETS NOT SHOWN.  
 FOR CORED SLAB REINFORCING STEEL LAYOUT, SEE "PRESTRESSED CONCRETE CORED SLAB 50' SPAN DETAILS" SHEET.

BILL OF MATERIAL ONE 50' CORED SLAB							
MARK	NO. REQ'D	DIMENSION					LENGTH
		"a"	"b"	"c"	"d"	"e"	
A0401	4	25'-9"					25'-9"
J0401	8	1'-9 1/2"	1'-6"				4'-10"
J0402	120	2'-8"	1'-6"				5'-8"
J0403	4	1'-5 1/2"	2'-8"				6'-10"
J0501	8	2'-7"	6"				3'-7"
LA0501	① 66	5 1/2"					7'-7"

QUANTITIES			
ITEM	UNIT	INTERIOR	EXTERIOR
REINFORCING STEEL	LB	597	1,119
CONCRETE, f'c 6,000	CY	7.1	7.1
0.6" Ø L.R. STRANDS	LF	898	898

① LA0501 BARS REQUIRED FOR EXTERIOR SLABS ONLY.

BILL OF MATERIAL ONE 50' BARRIER PARAPET							
MARK	NO. REQ'D	DIMENSION					LENGTH
		"a"	"b"	"c"	"d"	"e"	
A0501	10	49'-6"					49'-6"
A0502	8	5'-0"					5'-0"
J0502	66	5 1/2"	3'-3"				7'-0"

QUANTITIES		
ITEM	UNIT	TOTAL
2.0" SCHEDULE 80 PVC CONDUIT	LF	100.0
REINFORCING STEEL	LB	1,040
MASH CONCRETE BARRIER PARAPET	LF	50.0

ESTIMATED QUANTITIES - ONE 50' SPAN		
ITEM	UNIT	TOTAL
2.0" SCHEDULE 80 PVC CONDUIT	LF	200.0
REINFORCING STEEL FOR STRUCTURES (BRIDGE)	LB	2,080
3'-0" X 1'-9" CORED SLABS	LF	698.3
MASH CONCRETE BARRIER PARAPET	LF	100.0
ELASTOMERIC BEARING	EA	28
BRIDGE DECK WATERPROOFING	SY	221.3

NOTE:  
 FOR ADDITIONAL DETAILS, SEE PRESTRESSED CONCRETE CORED SLAB DETAILS SHEETS.

THIS DRAWING IS FURNISHED FOR INFORMATION ONLY. ALL DIMENSIONS SHOWN ARE SHEET SPECIFIC. ANY USE OF THIS DESIGN AND DRAWING, INCLUDING DIMENSIONS, MUST BE CHECKED BY THE USER'S ENGINEER TO ENSURE DESIGN IS ADEQUATE FOR THE INTENDED USE. ALL DRAWINGS MUST BE SIGNED AND SEALED BY A SOUTH CAROLINA REGISTERED PROFESSIONAL ENGINEER WHEN USED.

CONSULTANT NAME/LOGO

SOUTH CAROLINA  
 DEPARTMENT OF TRANSPORTATION

**PRESTRESSED CONCRETE CORED SLAB**  
**50' SPAN**  
**39'-10" ROADWAY (0° SKEW)**

COUNTY: ##### ROUTE: #####

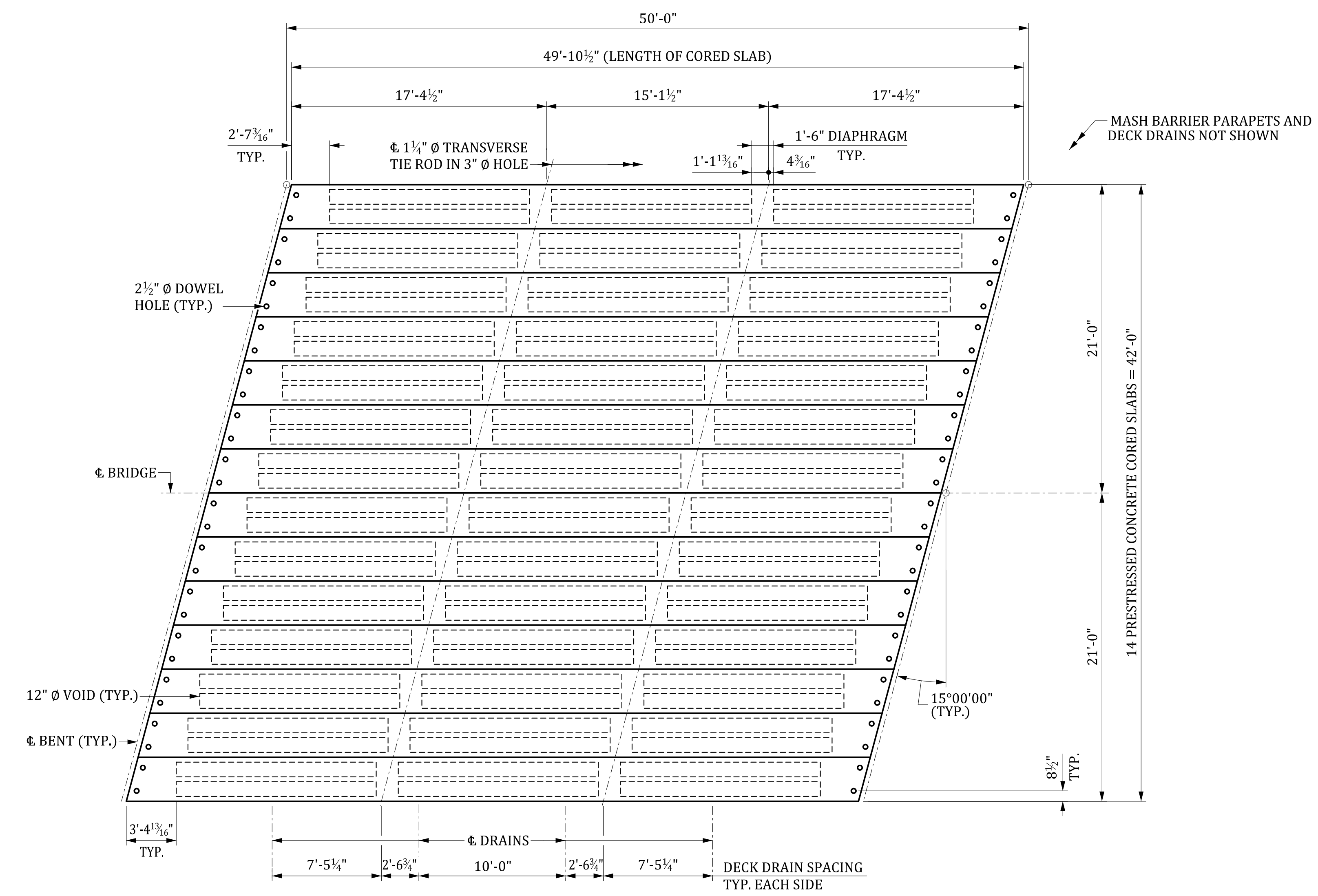
MBreeland 6/25/2024 5:21:54 PM 704\_ACS\_050.dgn

REV.	BY	CHK.	DATE	DESCRIPTION OF REVISION

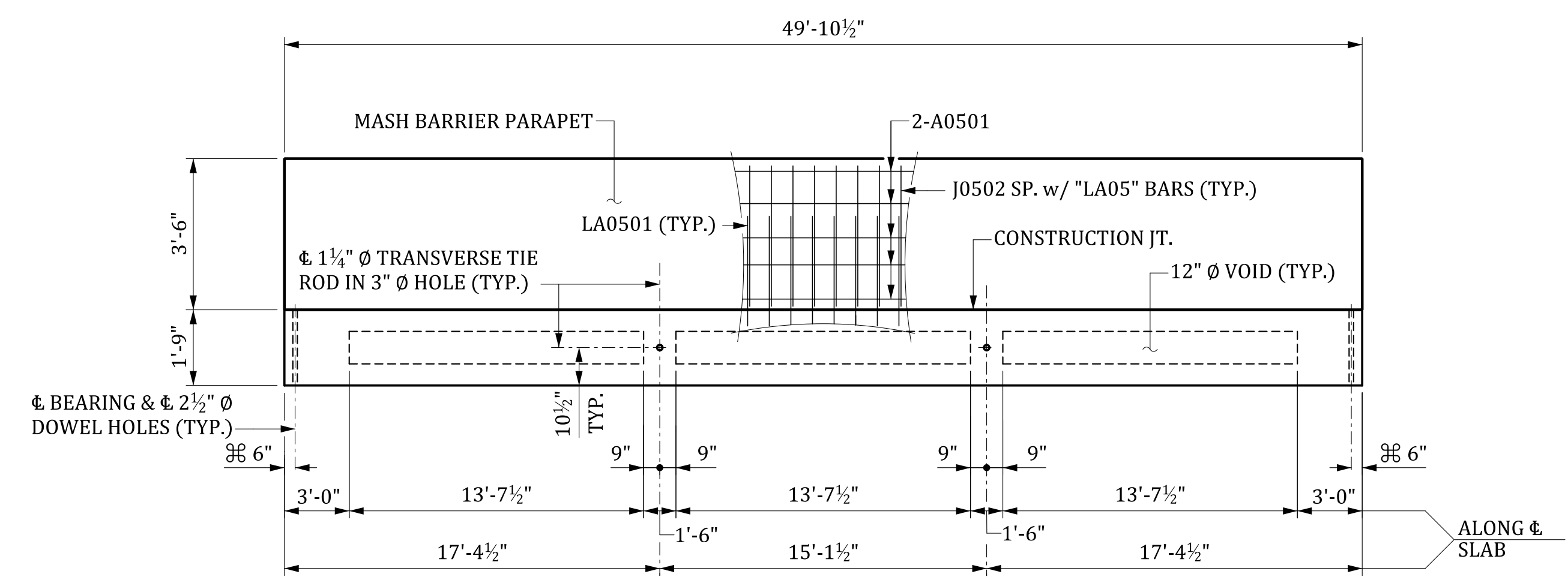
REVIEWED	CTM	GCM	05-23



DEAD LOAD DEFLECTION & CAMBER		
CAMBER AT ERECTION (SLAB ALONE IN PLACE)		↑ 2"
DEFLECTION DUE TO BARRIER PARAPETS AND ASPHALT WEARING SURFACE		↓ X"
FINAL CAMBER		↑ X"



PLAN



ELEVATION

DECK DRAINS AND TIE ROD POCKETS NOT SHOWN.  
FOR CORED SLAB REINFORCING STEEL LAYOUT, SEE "PRESTRESSED CONCRETE CORED SLAB 50' SPAN DETAILS" SHEET.

BILL OF MATERIAL ONE 50' CORED SLAB							
MARK	NO. REQ'D	DIMENSION					LENGTH
		"a"	"b"	"c"	"d"	"e"	
A0401	4	25'-9"					25'-9"
J0401	8	1'-10 1/2"	1'-6"				4'-11"
J0402	90	2'-8"	1'-6"				5'-8"
J0403	4	1'-5 1/2"	2'-8"				6'-10"
J0404	12	2'-8 1/2"	1'-6"				5'-9"
J0405	20	2'-9"	1'-6"				5'-9"
J0501	8	2'-7"	6"				3'-7"
LA0501	① 60	5 1/2"					7'-7"
LA0502	① 6	5 3/4"					7'-7"

QUANTITIES			
ITEM	UNIT	INTERIOR	EXTERIOR
REINFORCING STEEL	LB	607	1,130
CONCRETE, Fc 6,000	CY	7.2	7.2
0.6" Ø L.R. STRANDS	LF	898	898

① "LA05" BARS REQUIRED FOR EXTERIOR SLABS ONLY.

BILL OF MATERIAL ONE 50' BARRIER PARAPET					
MARK	NO. REQ'D	DIMENSION			LENGTH
		"a"	"b"	"c"	
A0501	10	49'-6"			49'-6"
A0502	8	5'-0"			5'-0"
J0502	66	5 1/2"	3'-3"		7'-0"

QUANTITIES		
ITEM	UNIT	TOTAL
2.0" SCHEDULE 80 PVC CONDUIT	LF	100.0
REINFORCING STEEL	LB	1,040
MASH CONCRETE BARRIER PARAPET	LF	50.0

ESTIMATED QUANTITIES - ONE 50' SPAN		
ITEM	UNIT	TOTAL
2.0" SCHEDULE 80 PVC CONDUIT	LF	200.0
REINFORCING STEEL FOR STRUCTURES (BRIDGE)	LB	2,080
3'-0" X 1'-9" CORED SLABS	LF	698.3
MASH CONCRETE BARRIER PARAPET	LF	100.0
ELASTOMERIC BEARING	EA	28
BRIDGE DECK WATERPROOFING	SY	221.3

NOTE:  
FOR ADDITIONAL DETAILS, SEE PRESTRESSED CONCRETE CORED SLAB DETAILS SHEETS.

THIS DRAWING IS FURNISHED FOR INFORMATION ONLY. ALL DIMENSIONS SHOWN ARE SHEET SPECIFIC. ANY USE OF THIS DESIGN AND DRAWING, INCLUDING DIMENSIONS, MUST BE CHECKED BY THE USER'S ENGINEER TO ENSURE DESIGN IS ADEQUATE FOR THE INTENDED USE. ALL DRAWINGS MUST BE SIGNED AND SEALED BY A SOUTH CAROLINA REGISTERED PROFESSIONAL ENGINEER WHEN USED.

CONSULTANT NAME/LOGO

SOUTH CAROLINA  
DEPARTMENT OF TRANSPORTATION

**PRESTRESSED CONCRETE CORED SLAB  
50' SPAN  
39'-10" ROADWAY (+15° SKEW)**

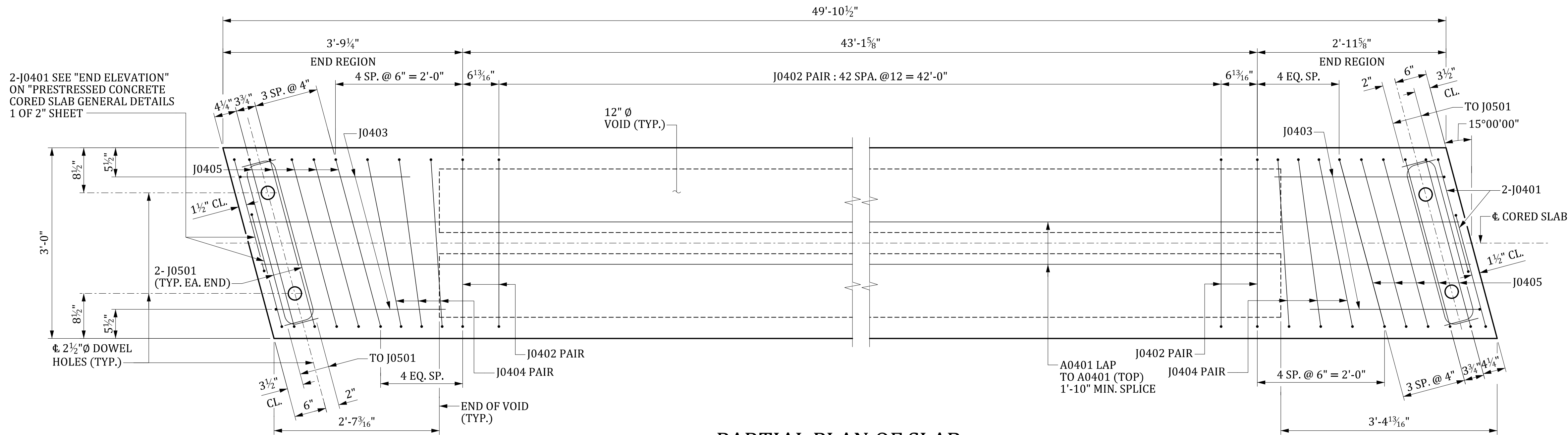
COUNTY: #### ROUTE: ####

REVIEWED	CTM	GCM	05-23
QUAN.	CTM	MWB	05-23
DR.	OP	DPP	10-23
DES.	BY	CHK.	DATE

MBreland 6/25/2024 5:21:55 PM 704\_ACS\_050.dgn

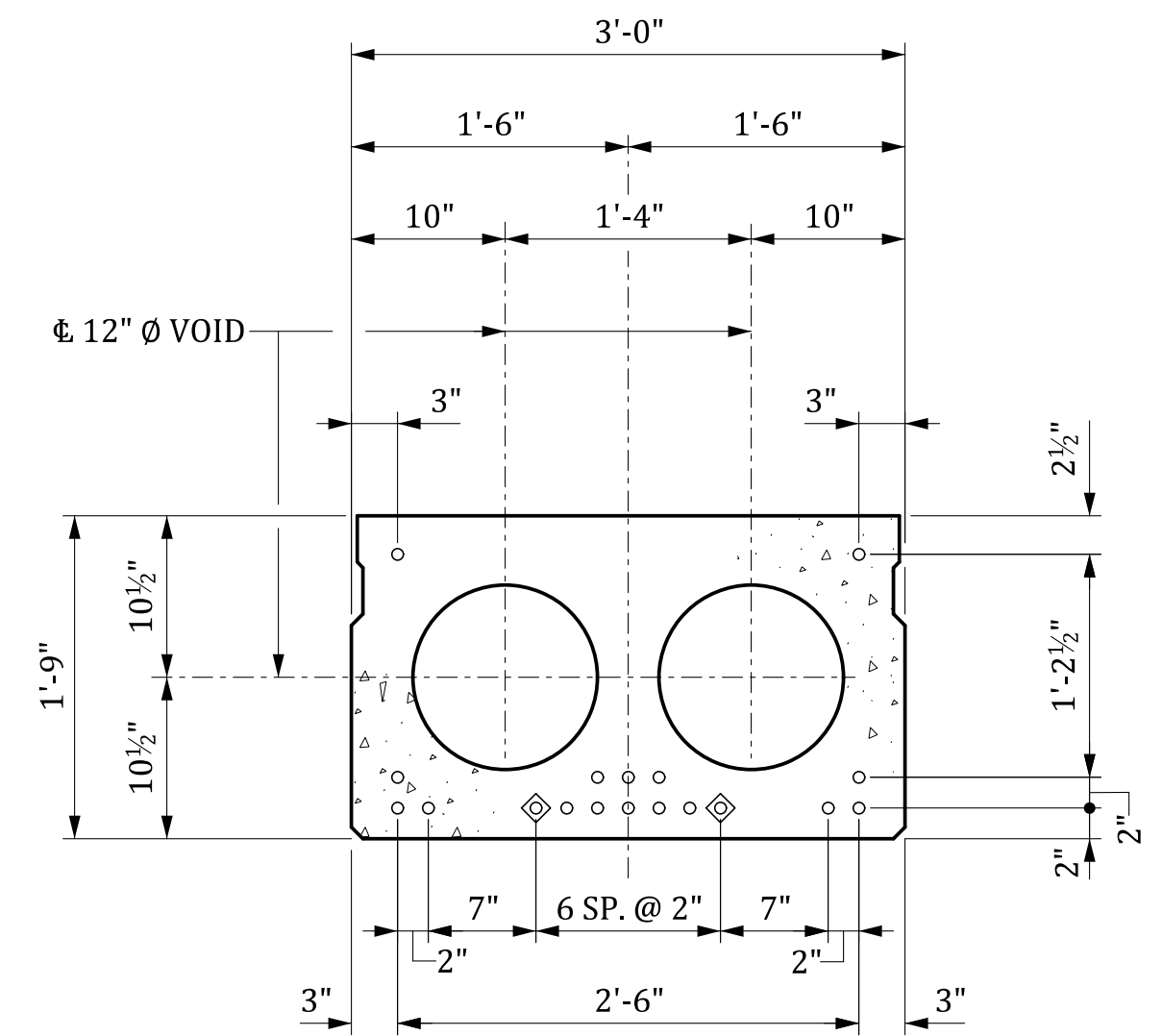
REV.	BY	CHK.	DATE	DESCRIPTION OF REVISION

⊗ NORMAL TO END OF SLAB



**PARTIAL PLAN OF SLAB**

STRANDS NOT SHOWN.  
INTERIOR SLAB SHOWN, EXTERIOR SLAB SIMILAR EXCEPT BARRIER REINFORCEMENT, SEE BELOW.

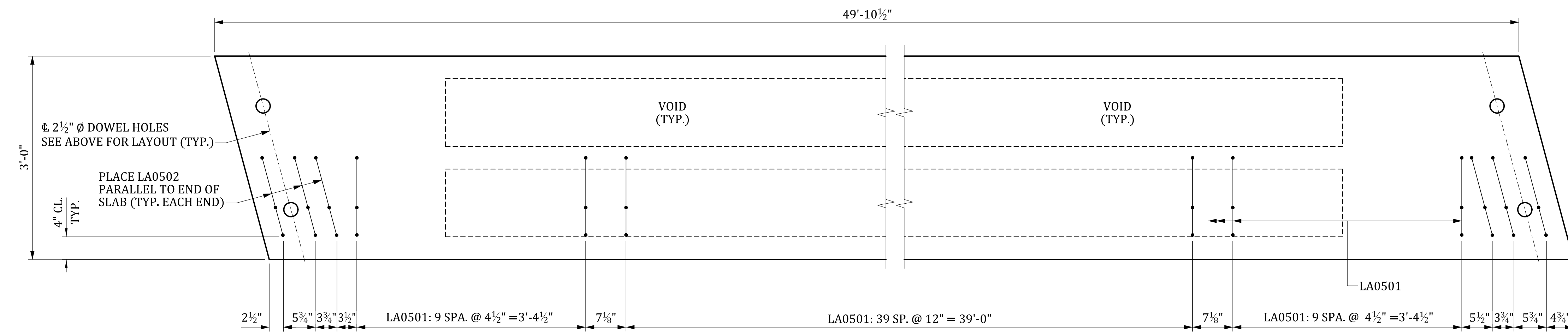


**STRAND LAYOUT**

18 - 0.6" Ø L.R. STRANDS  
INTERIOR SLAB SHOWN - EXTERIOR SLAB SIMILAR EXCEPT SHEAR KEY LOCATION.  
○ FULLY BONDED STRANDS  
◊ DEBONDED STRANDS FOR 4'-0" FROM END OF SLAB

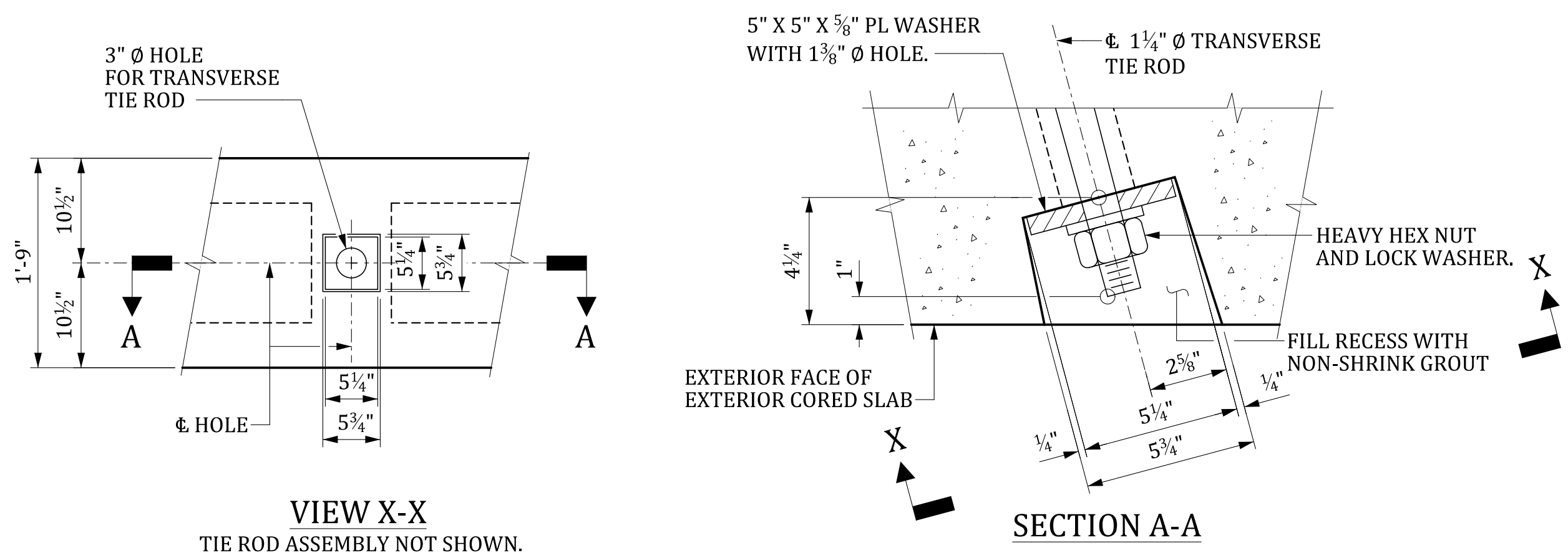
NOTE:  
BOND SHALL BE BROKEN ON STRANDS AS SHOWN FOR THE SPECIFIED LENGTH FROM EACH END OF THE CORED SLAB. SEE NOTES ON "PRESTRESSED CONCRETE CORED SLAB TYPICAL SUPERSTRUCTURE SECTION" SHEET.

DESIGN DATA	
STRANDS:	0.6" Ø LOW RELAXATION GRADE 270
	AREA=0.217 SQ. IN.
	TENSIONING LOAD = 43.9 KIPS
CONCRETE:	f'c = 6.0 KSI
	f'ci = 4.8 KSI



**PARTIAL PLAN OF EXTERIOR SLAB**

SHOWING PLACEMENT OF LA0501 AND LA0502 BARS FOR MASH BARRIER PARAPET.  
"LA05" BARS MAY BE SHIFTED SLIGHTLY TO AVOID STIRRUPS.



**TIE ROD POCKET DETAIL**

EXTERIOR FACE OF EXTERIOR SLAB.

NOTE:  
FOR DIAPHRAGM DIMENSIONS AND LAYOUT, SEE "PRESTRESSED CONCRETE CORED SLAB 50' SPAN-PLAN" SHEET.  
STIRRUPS AND VERTICAL BARRIER REINFORCEMENT MAY BE SHIFTED SLIGHTLY TO CLEAR HOLES FOR TIE RODS.

THIS DRAWING IS FURNISHED FOR INFORMATION ONLY. ALL DIMENSIONS SHOWN ARE SHEET SPECIFIC. ANY USE OF THIS DESIGN AND DRAWING, INCLUDING DIMENSIONS, MUST BE CHECKED BY THE USER'S ENGINEER TO ENSURE DESIGN IS ADEQUATE FOR THE INTENDED USE. ALL DRAWINGS MUST BE SIGNED AND SEALED BY A SOUTH CAROLINA REGISTERED PROFESSIONAL ENGINEER WHEN USED.

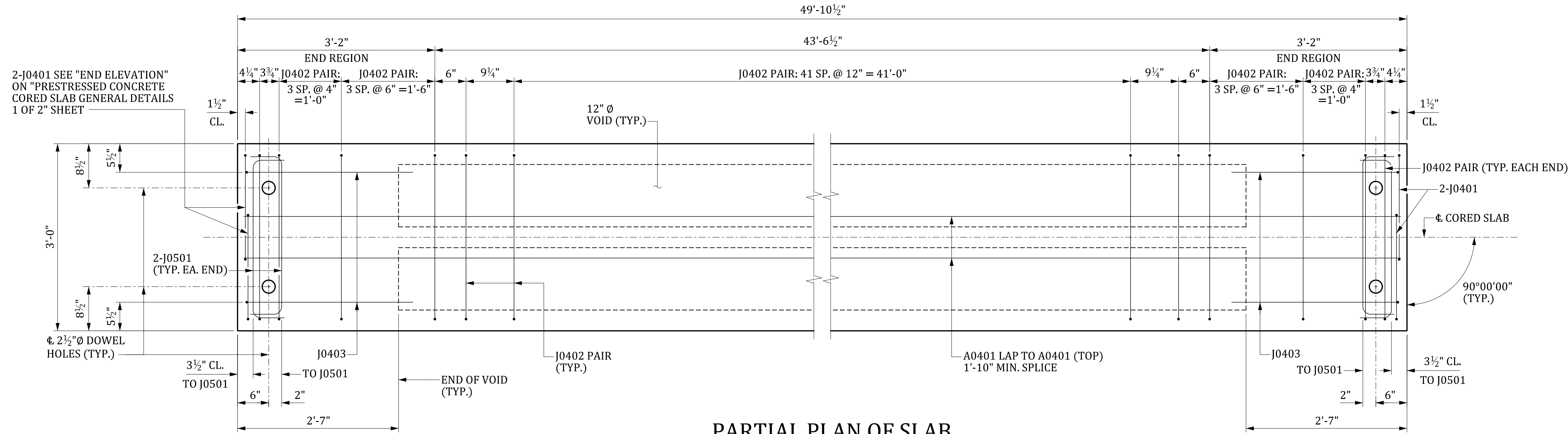
CONSULTANT NAME/LOGO	
SOUTH CAROLINA DEPARTMENT OF TRANSPORTATION	
PRESTRESSED CONCRETE CORED SLAB 50' SPAN DETAILS (-15° SKEW)	
COUNTY: ####	ROUTE: ####

REVIEWED	QUAN.	CTM	GCM	05-23
DR.	CTM	MWB	05-23	
DES.	OP	DPP	10-23	
	BY	CHK.	DATE	

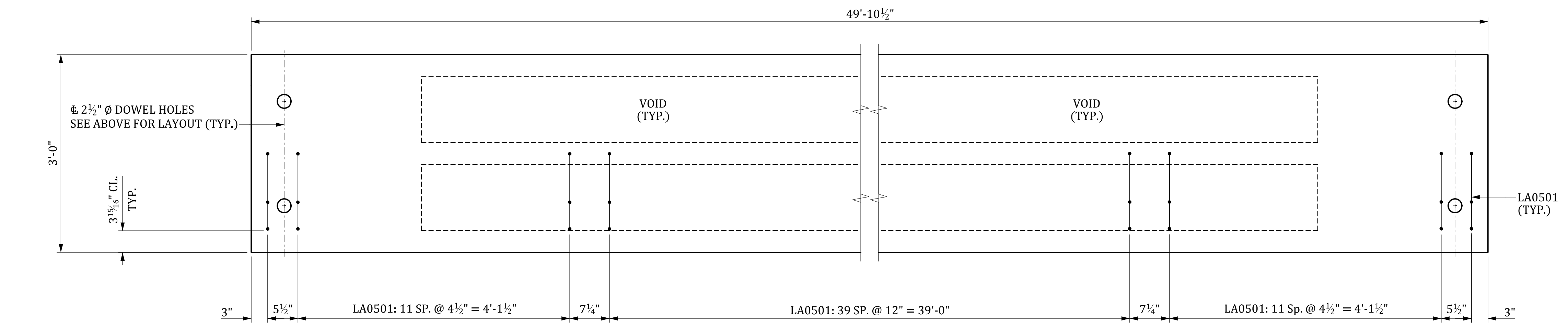
REV.	BY	CHK.	DATE	DESCRIPTION OF REVISION

MBreeland 6/25/2024 5:21:59 PM 704\_ACS\_050.dgn



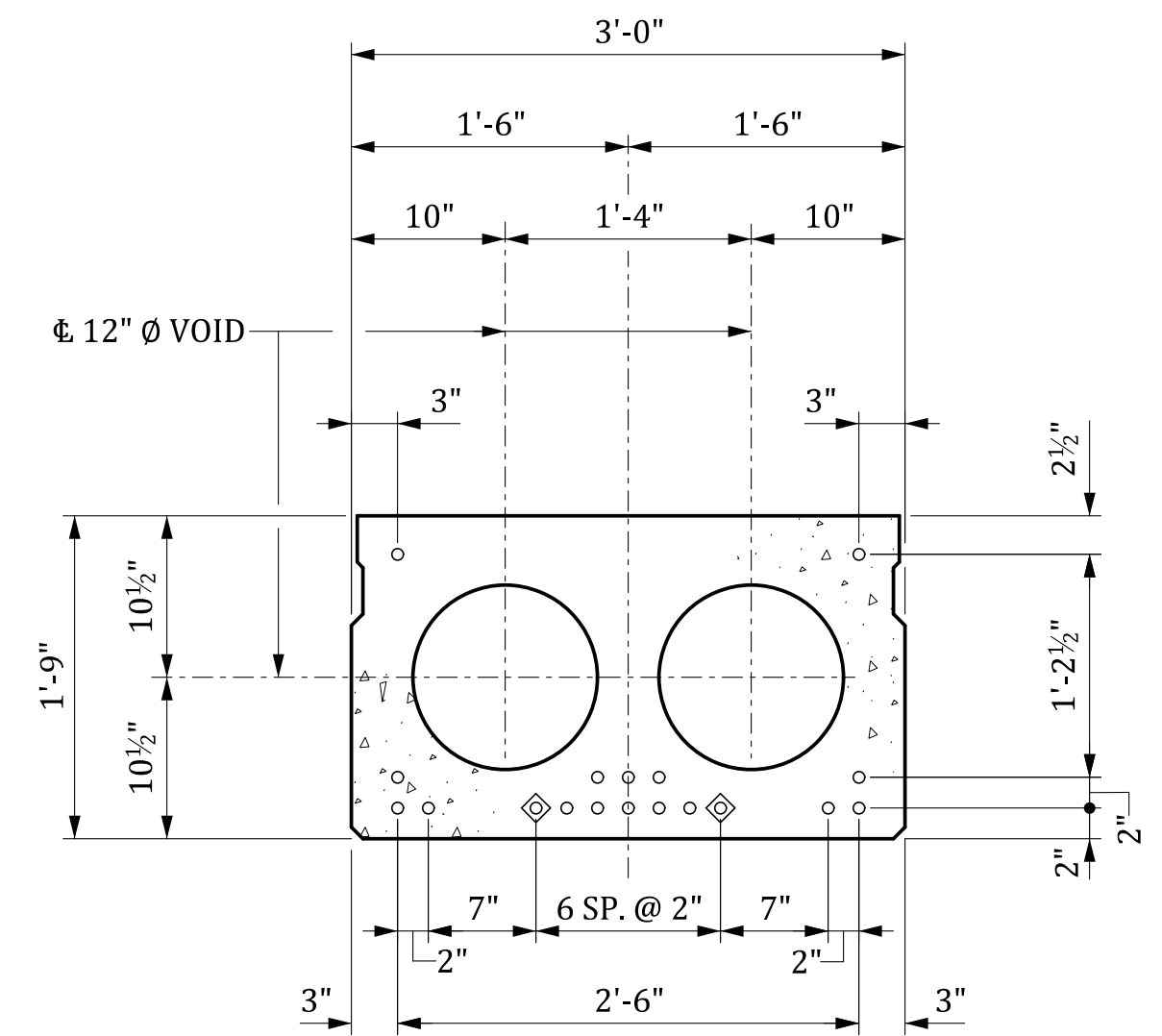
**PARTIAL PLAN OF SLAB**

STRANDS NOT SHOWN.  
INTERIOR SLAB SHOWN, EXTERIOR SLAB SIMILAR EXCEPT BARRIER REINFORCEMENT. SEE BELOW.



**PARTIAL PLAN OF EXTERIOR SLAB**

SHOWING PLACEMENT OF LA0501 BARS FOR MASH BARRIER PARAPET.  
LA0501 BARS MAY BE SHIFTED SLIGHTLY TO AVOID STIRRUPS.

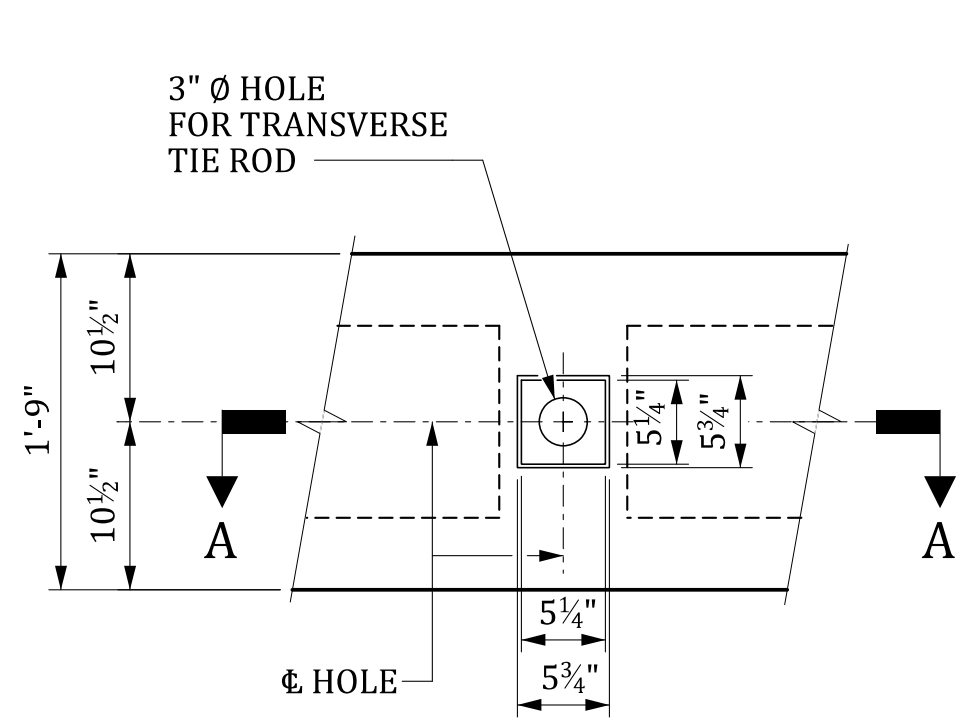


**STRAND LAYOUT**

INTERIOR SLAB SHOWN - EXTERIOR SLAB SIMILAR EXCEPT SHEAR KEY LOCATION.  
○ FULLY BONDED STRANDS  
◊ DEBONDED STRANDS FOR 4'-0" FROM END OF SLAB

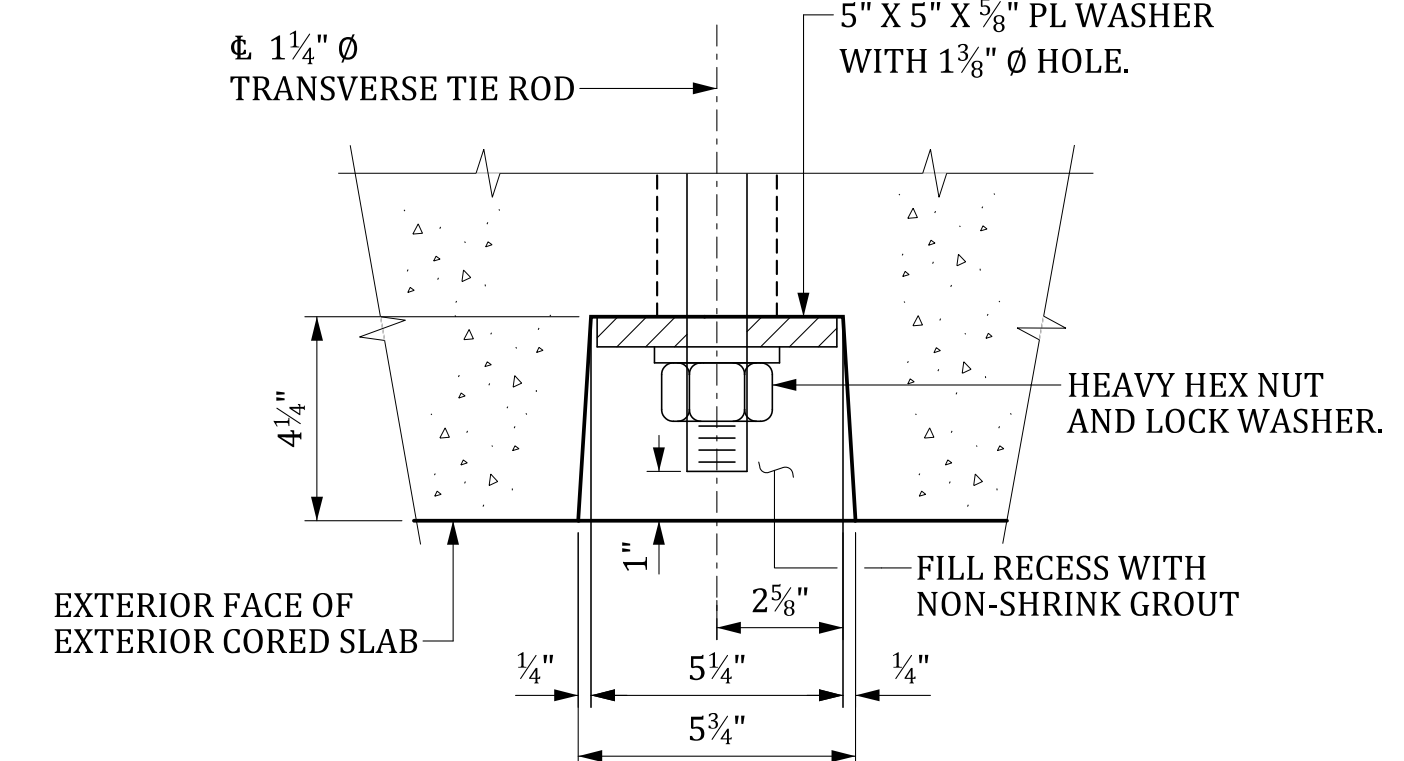
NOTE:  
BOND SHALL BE BROKEN ON STRANDS AS SHOWN FOR THE SPECIFIED LENGTH FROM EACH END OF THE CORED SLAB. SEE NOTES ON "PRESTRESSED CONCRETE CORED SLAB TYPICAL SUPERSTRUCTURE SECTION" SHEET.

DESIGN DATA	
STRANDS:	0.6" Ø LOW RELAXATION GRADE 270
	AREA=0.217 SQ. IN.
	TENSIONING LOAD = 43.9 KIPS
CONCRETE:	f'c = 6.0 KSI
	f'ci = 4.8 KSI



**ELEVATION**

TIE ROD ASSEMBLY NOT SHOWN.



**SECTION A-A**

**TIE ROD POCKET DETAIL**

EXTERIOR FACE OF EXTERIOR SLAB.

NOTE:  
FOR DIAPHRAGM DIMENSIONS AND LAYOUT, SEE "PRESTRESSED CONCRETE CORED SLAB 50' SPAN-PLAN" SHEET.

STIRRUPS AND VERTICAL BARRIER REINFORCEMENT MAY BE SHIFTED SLIGHTLY TO CLEAR HOLES FOR TIE RODS.

THIS DRAWING IS FURNISHED FOR INFORMATION ONLY. ALL DIMENSIONS SHOWN ARE SHEET SPECIFIC. ANY USE OF THIS DESIGN AND DRAWING, INCLUDING DIMENSIONS, MUST BE CHECKED BY THE USER'S ENGINEER TO ENSURE DESIGN IS ADEQUATE FOR THE INTENDED USE. ALL DRAWINGS MUST BE SIGNED AND SEALED BY A SOUTH CAROLINA REGISTERED PROFESSIONAL ENGINEER WHEN USED.

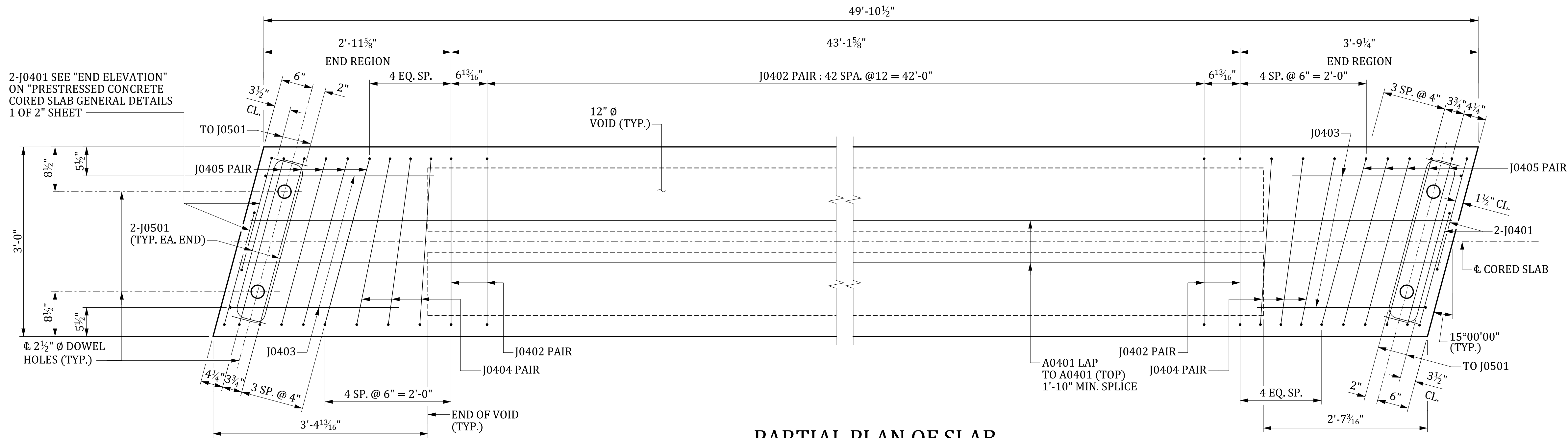
CONSULTANT NAME/LOGO	
SOUTH CAROLINA DEPARTMENT OF TRANSPORTATION	
<b>PRESTRESSED CONCRETE CORED SLAB 50' SPAN DETAILS (0° SKEW)</b>	
COUNTY: ####	ROUTE: ####

REV.	BY	CHK.	DATE	DESCRIPTION OF REVISION

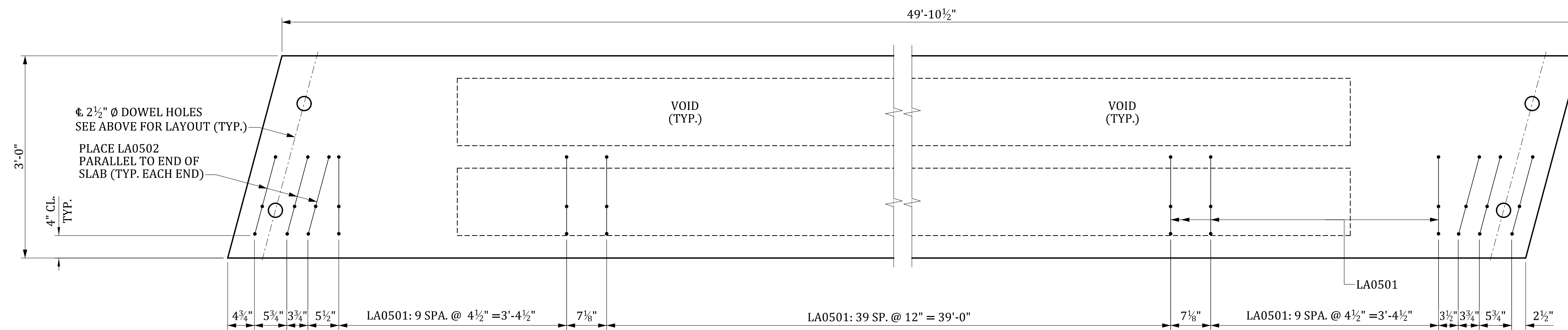
REVIEWED	QUAN.	CTM	GCM	05-23
DR.	CTM	MWB	05-23	
DES.	OP	DPP	10-23	
	BY	CHK.	DATE	

MBreeland 6/25/2024 5:22:01 PM 704\_ACS\_050.dgn



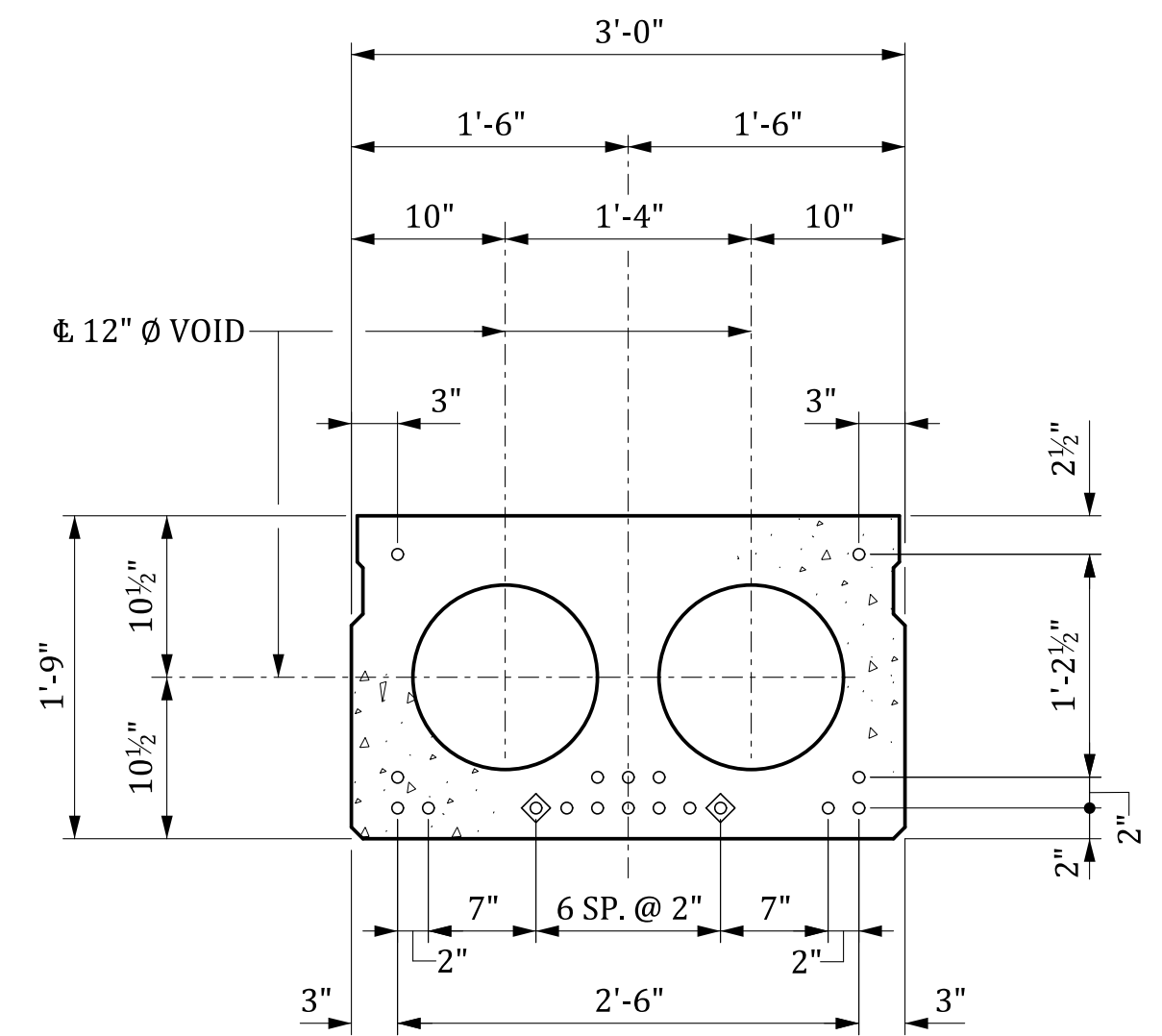
**PARTIAL PLAN OF SLAB**

STRANDS NOT SHOWN.  
 INTERIOR SLAB SHOWN, EXTERIOR SLAB SIMILAR EXCEPT BARRIER REINFORCEMENT. SEE BELOW.



**PARTIAL PLAN OF EXTERIOR SLAB**

SHOWING PLACEMENT OF LA0501 AND LA0502 BARS FOR MASH BARRIER PARAPET.  
 "LA05" BARS MAY BE SHIFTED SLIGHTLY TO AVOID STIRRUPS.



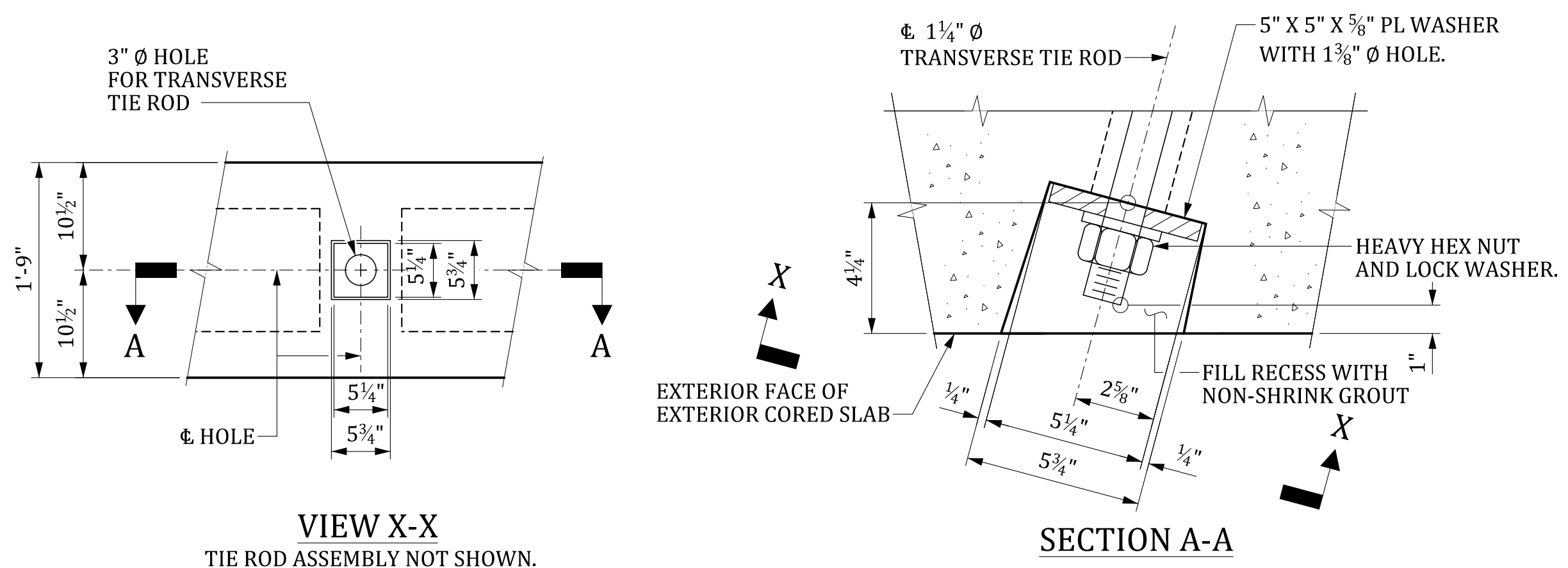
**STRAND LAYOUT**

INTERIOR SLAB SHOWN - EXTERIOR SLAB SIMILAR EXCEPT SHEAR KEY LOCATION.

- FULLY BONDED STRANDS
- ◊ DEBONDED STRANDS FOR 4'-0" FROM END OF SLAB

NOTE:  
 BOND SHALL BE BROKEN ON STRANDS AS SHOWN FOR THE SPECIFIED LENGTH FROM EACH END OF THE CORED SLAB. SEE NOTES ON "PRESTRESSED CONCRETE CORED SLAB TYPICAL SUPERSTRUCTURE SECTION" SHEET.

DESIGN DATA	
STRANDS:	0.6"Ø LOW RELAXATION GRADE 270
	AREA=0.217 SQ. IN.
	TENSIONING LOAD = 43.9 KIPS
CONCRETE:	f'c = 6.0 KSI
	f'ci = 4.8 KSI



**TIE ROD POCKET DETAIL**

EXTERIOR FACE OF EXTERIOR SLAB.

NOTE:  
 FOR DIAPHRAGM DIMENSIONS AND LAYOUT, SEE "PRESTRESSED CONCRETE CORED SLAB 50' SPAN-PLAN" SHEET.

STIRRUPS AND VERTICAL BARRIER REINFORCEMENT MAY BE SHIFTED SLIGHTLY TO CLEAR HOLES FOR TIE RODS.

THIS DRAWING IS FURNISHED FOR INFORMATION ONLY. ALL DIMENSIONS SHOWN ARE SHEET SPECIFIC. ANY USE OF THIS DESIGN AND DRAWING, INCLUDING DIMENSIONS, MUST BE CHECKED BY THE USER'S ENGINEER TO ENSURE DESIGN IS ADEQUATE FOR THE INTENDED USE. ALL DRAWINGS MUST BE SIGNED AND SEALED BY A SOUTH CAROLINA REGISTERED PROFESSIONAL ENGINEER WHEN USED.

CONSULTANT NAME/LOGO	
SOUTH CAROLINA DEPARTMENT OF TRANSPORTATION	
<b>PRESTRESSED CONCRETE CORED SLAB 50' SPAN DETAILS (+15° SKEW)</b>	
COUNTY: #####	ROUTE: #####

REVIEWED	QUAN	CTM	GCM	05-23
DR.	CTM	MWB	05-23	
DES.	OP	DPP	10-23	
	BY	CHK.	DATE	

REV.	BY	CHK.	DATE	DESCRIPTION OF REVISION

MBreeland 6/25/2024 5:21:56 PM 704\_ACS\_050.dgn