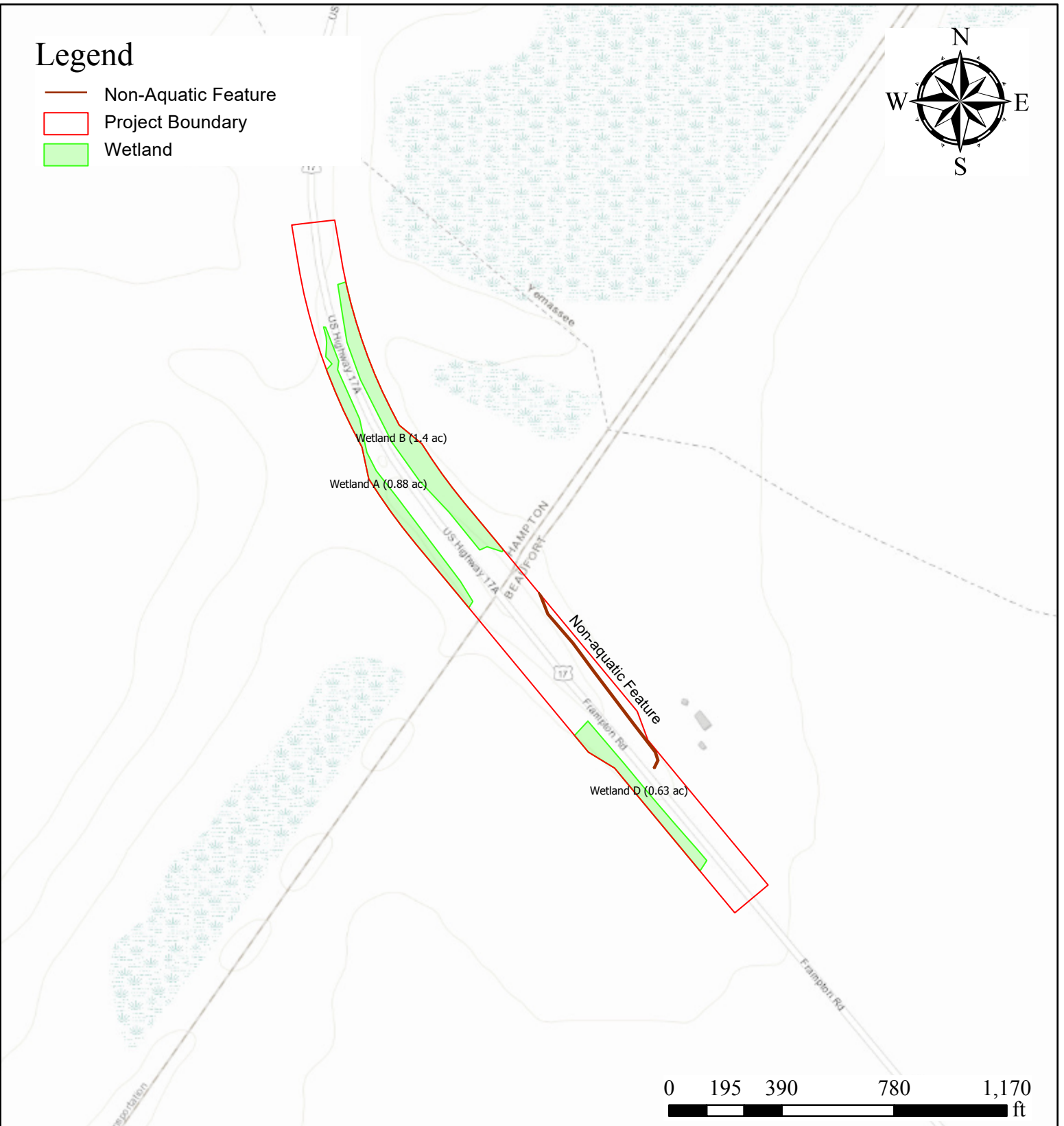


# Legend

- Non-Aquatic Feature
- Project Boundary
- Wetland



## Figure 6 - Delineated Features

Author: ARW  
Project Name: US 17A/US 21 CSX Emergency Bridge Replacement  
PIN: P042942  
Acreage: 11.82  
County: Beaufort Hampton  
State: South Carolina  
Date: 11/21/2023

