



South Carolina
Department of Transportation

955 Park Street
Post Office Box 191
Columbia, South Carolina 29202-0191

Office of the Director
(803) 737-1302 • Fax (803) 737-2038

Deputy Director of Engineering
(803) 737-1314 • Fax (803) 737-2038

Deputy Director of Finance and Administration
(803) 737-1240 • Fax (803) 737-1719

Deputy Director of Mass Transit
(803) 737-9720 • Fax (803) 737-9739

BDF

DM0796

July 1, 1996

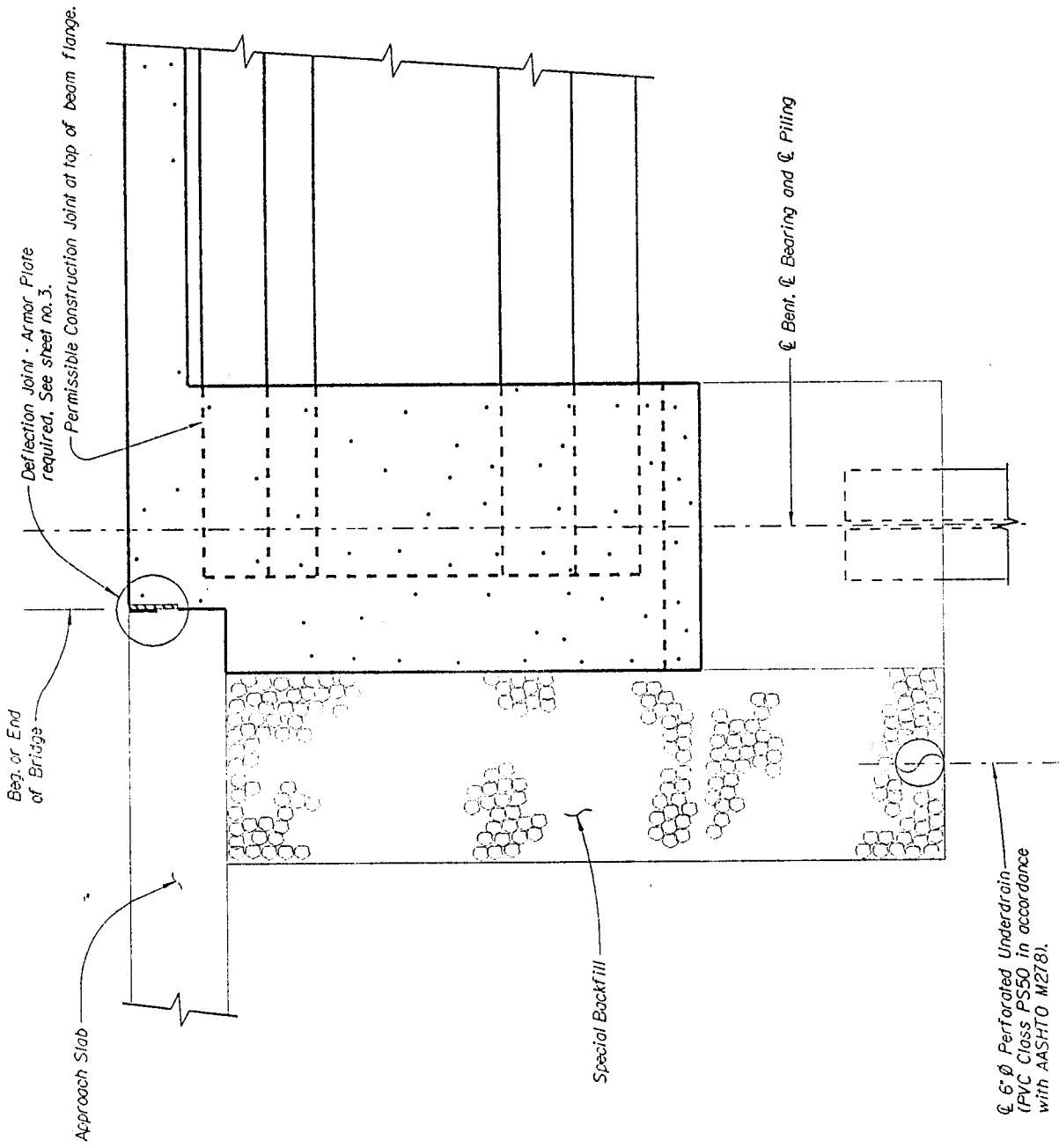
MEMORANDUM TO GROUP LEADERS & CONSULTANTS

SUBJECT: End Walls on Prestressed Beams

The end walls at the bridge ends on continuous prestressed beam spans are to be detailed the full width of the end bent. This detail is for integral continuous beam bridges that are jointless. This detail may be altered when designs warrant. See attached Detail "A".

Rocque L. Kneece
Bridge Design Engineer

cc: Assistant Bridge Design Engineers



DETAIL "A"