



South Carolina  
Department of Transportation

DM0605

December 12, 2005

**MEMORANDUM TO TEAM LEADERS AND CONSULTANTS**

**SUBJECT:** Conduit in Barrier Parapets and Railing Walls

Effective with the April 2006 Letting, two 2-inch diameter conduits shall be detailed in all concrete bridge barrier parapets and concrete bridge railing walls as shown on the attached Detail. The following requirements shall be included in the bridge plans:

- Schedule 80 PVC rigid nonmetallic conduit shall be specified.
- The conduits shall extend 6 inches beyond each end of barrier parapet or railing wall.
- The ends of the conduits shall be capped with watertight covers.
- Expansion or deflection fittings, capable of accommodating anticipated movements and rotations, shall be specified at each open joint in the barrier parapet or railing wall.
- Pull boxes shall be detailed for any conduit lengths in excess of 300 feet.
- Pull boxes shall be non-metallic or galvanized steel and shall be mounted in the barrier parapet or railing wall, flush with the outside face.

Payment for the conduit shall be made under:

Item No.	Bid Item	Unit	Quantity
6060278	2.0" SCHEDULE 80 PVC CONDUIT	LF	

The cost of furnishing and installing pull boxes shall be included in the unit price bid for the conduit.

For previously completed plans that do not conform to the requirements of this memorandum, the Surveys/Utilities Engineer will, on a case-by-case basis, assess the need for revisions.

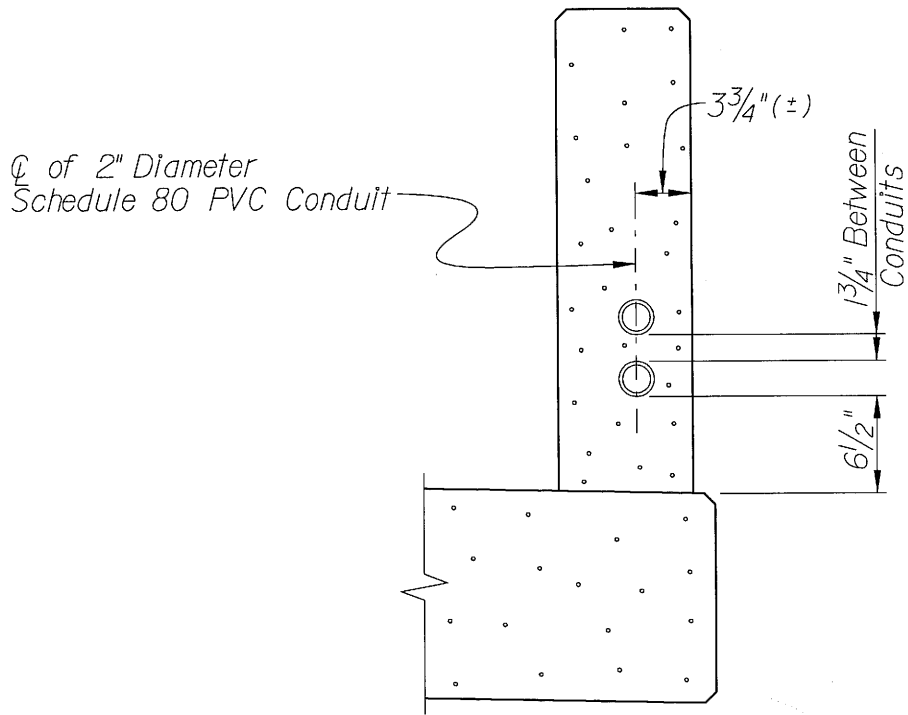
Rocque L. Kneece, P. E.  
Program Development Engineer

**Attachment**

- cc: Assistant Bridge Design Engineers  
Bridge Construction Engineer  
Bridge Maintenance Engineer  
FHWA Structural Engineer  
Surveys/Utilities Engineer

File: PC/BWB





SECTION THROUGH BARRIER PARAPET  
 TRANSITION OR RAILING WALL

CONDUIT PLACEMENT DETAIL