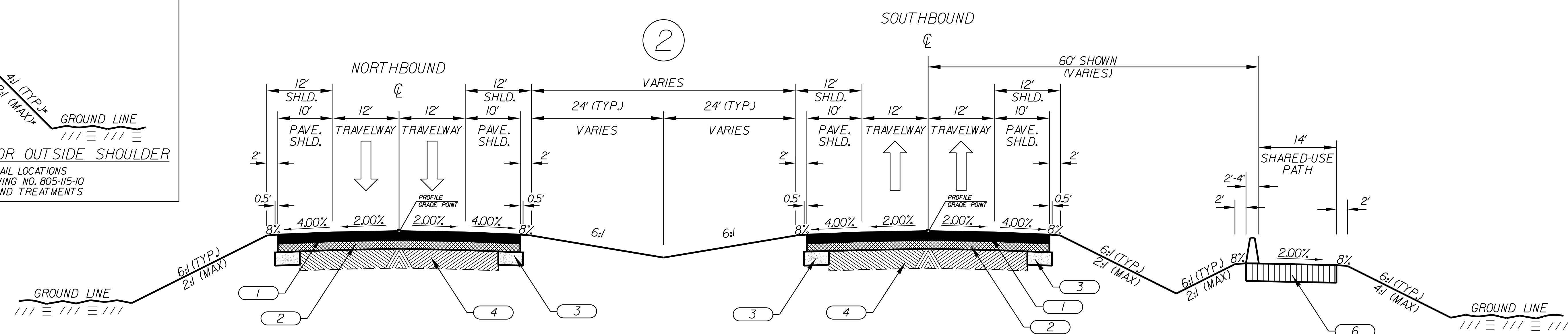
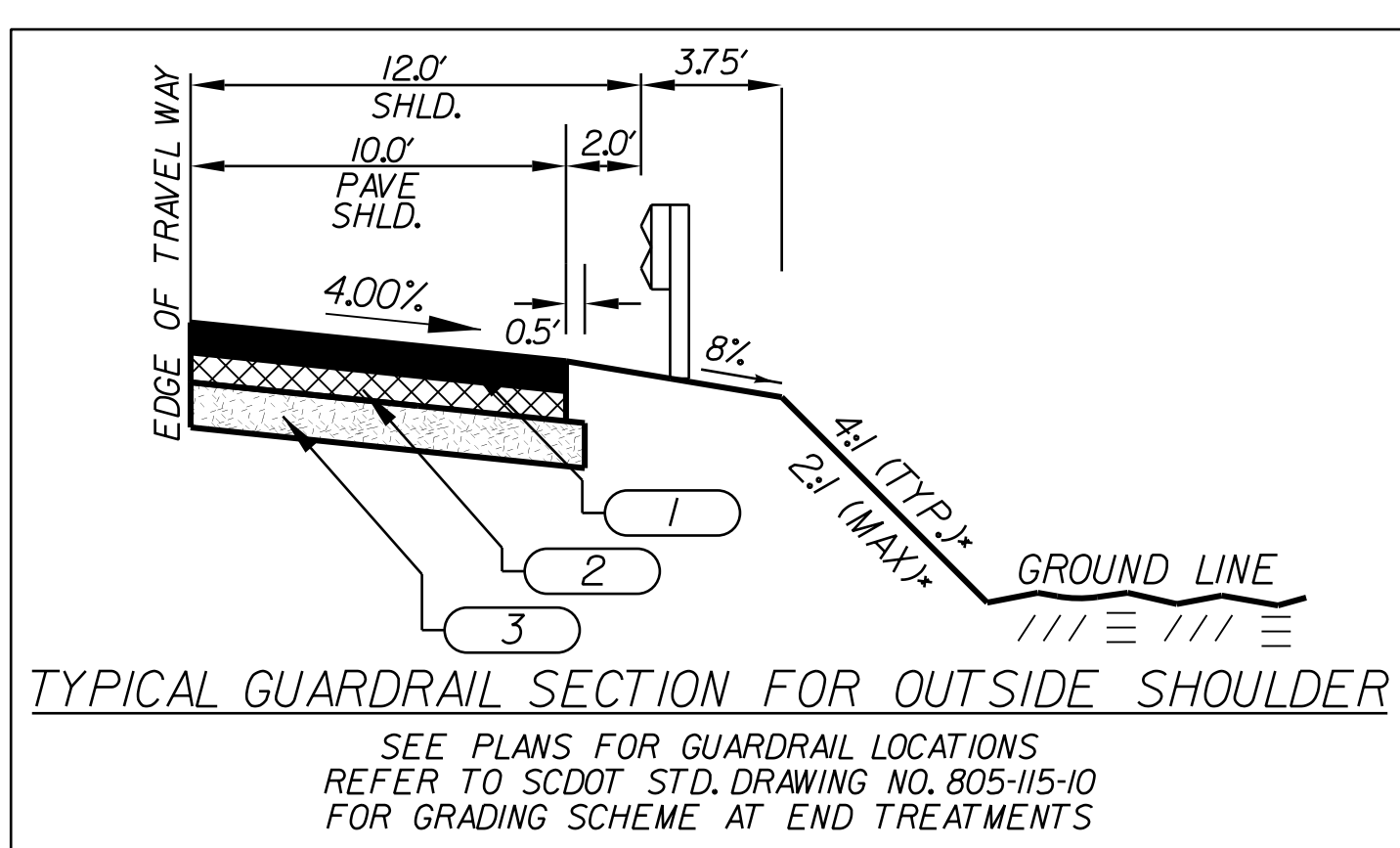
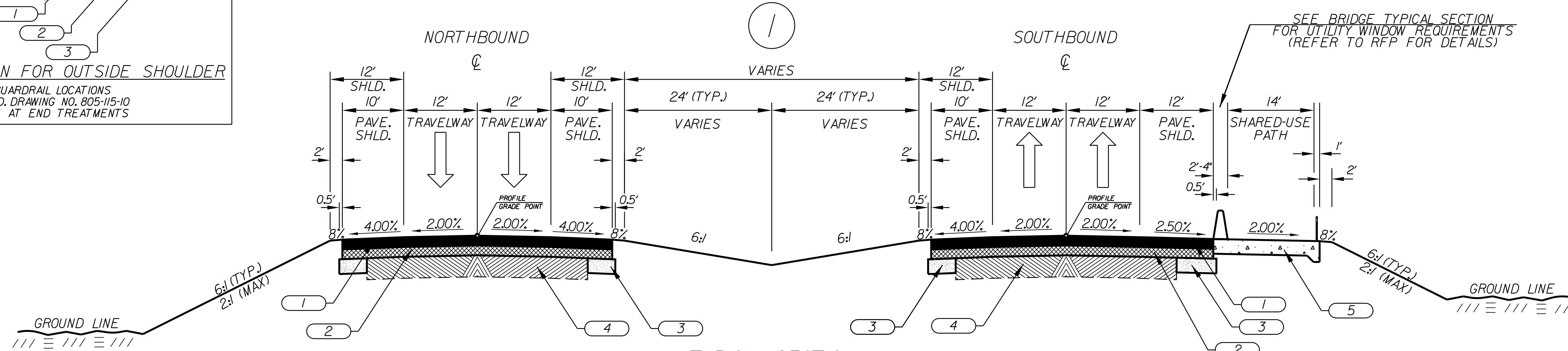
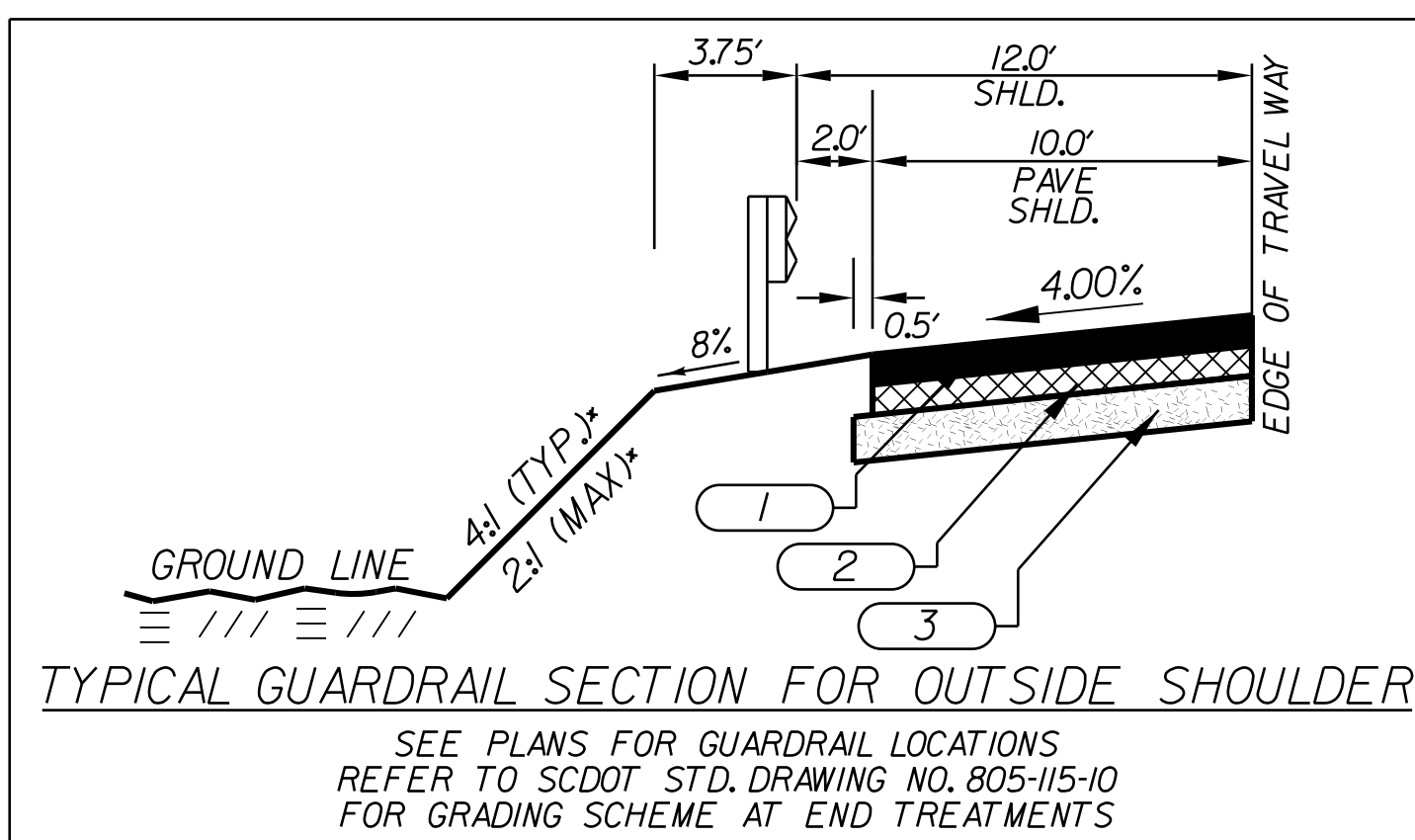


FED. ROAD DIST. NO.	STATE	COUNTY	PROJECT ID	ROAD/ROUTE NO.	SHEET NO.
3	S.C.	ORANGEBURG	P041130	I-95	TYP.
CLARENDON					

# TYPICAL SECTION OF IMPROVEMENT

## SOUTH CAROLINA DEPARTMENT OF TRANSPORTATION

### COLUMBIA, S.C.



**LEGEND**

1		HOT MIX ASPHALT SURFACE COURSE
2		HOT MIX ASPHALT INTERMEDIATE COURSE
3		HOT MIX ASPHALT BASE COURSE
4		EXISTING PAVEMENT TO BE RETAINED
5		SHARED-USE PATH CONCRETE PAVEMENT
6		SHARED-USE PATH HOT MIX ASPHALT PAVEMENT

CONCEPTUAL  
REVIEW ONLY

CONSULTING ENGINEERING FIRM  
**TRANSYSTEMS**  
1859 SUMMERVILLE AVE., SUITE 600  
CHARLESTON, SC 29405  
PHONE (843) 206-3300  
FAX (843) 329-9616  
WWW.TRANSYSTEMS.COM

RTE. I-95	DESIGN SPEED		FUNCTIONAL CLASSIFICATION
	MPH	FROM STA. TO STA.	
75			I-95 RURAL FREEWAY
EXCEPTIONS TO DESIGN SPEED			PAVEMENT DESIGN
			UNDETERMINED

SOUTH CAROLINA I-95 OVER LAKE MARION ORANGEBURG & CLARENDON COUNTY, S.C.		
TYPICAL SECTION		
SCALE 1"V=1'	SCALE 1"=10'	RTE./RD. I-95