

FED. RD. DIV. NO.	STATE	COUNTY	PROJECT ID	FILE NO.	SHEET NO.
2	S.C.	RICHLAND/LEXINGTON	CAROLINA CROSSROADS	P039718	U1



PRELIMINARY UTILITY RELOCATION PLANS FOR CAROLINA CROSSROADS I-20, I-26, I-126 IMPROVEMENT PROJECT PHASE 1 - COLONIAL LIFE BOULEVARD

UTILITY OWNER INFORMATION

COMMUNICATIONS AT&T-D 1600 WILLIAMS STREET, ROOM 4A-6 COLUMBIA, SC 29201 MR. STEVE MARTIN SM6480@ATT.COM MR. ANDREW WASHINGTON AW8544@ATT.COM	T1 OH7	SEWER PALMETTO UTILITIES INC 1710 WOODCREEK FARMS ROAD ELGIN, SC 29045 MR. ADAM DELK 803-699-2422 ADELK@NIAMERICA.COM	FS3 S3
COMMUNICATIONS SEGRA (FORMERLY SPIRIT COMMUNICATIONS) 1500 HAMPTON STREET, SUITE 101 COLUMBIA, SC 29201 MR. MARK CHAMBERS 803-587-2188 MARK.CHAMBERS@SPIRITCOM.COM MR. BRANDON CARTER (TPRC) 336-457-9495 R.MCCUMBER@GOACP.COM	T2 OH9	SEWER SYNERGY UTILITIES 816 EAST MAIN STREET LEXINGTON, SC 29072 MR. KEITH FARNELL SYNERGYUTILITIESLP@GMAIL.COM	FS4 S4
COMMUNICATIONS LEXINGTON MEDICAL CENTER 2720 SUNSET BLVD. WEST COLUMBIA, SC 29169 DALE THOMPSON 803-791-2000	T3	GAS DOMINION ENERGY 220 OPERATIONS WAY (MC: J29) CAYCE, SC 29033 MR. PATRICK GIBBONS PATRICK.GIBBONS@DOMINIONENERGY.COM	G1
COMMUNICATIONS CENTURYLINK (LEVEL 3) MR. RUSS WHEAT 803-206-9563 RUSSWHEAT@CENTURYLINK.COM	T4 OH11	GAS DOMINION CAROLINA GAS TRANS 220 OPERATIONS WAY CAYCE, SC 29033 MS. CONSTANCE STROBLE 803-217-4733 CONSTANCE.STROBLE@DOMINIONENERGY.COM	G2
COMMUNICATIONS STATE OF SOUTH CAROLINA DEPARTMENT OF ADMINISTRATION 1301 GERVAIS ST. SUITE 710 COLUMBIA, SC 29201 MR. CHARLIE BROWN 803-206-9563 CHARLIE.BROWN@ADMIN.SC.GOV	TF2	GAS DIXIE PIPELINE 950 NORTH POINT PARKWAY, STE 100 ALPHARETTA, GA 30005 MR. MARK BURKHOUTEN (803) 351-0583 MBURKHOUTEN@DIXIEPIPELINE.COM	G3
COMMUNICATIONS COMPORIUM /POND BRANCH TELEPHONE 471A LAKESHORE PARKWAY ROCK HILL, SC 29730 JIMMY LIVINGSTON 803-894-1111	T6	WATER CITY OF COLUMBIA 1136 WASHINGTON STREET COLUMBIA, SC 29201 MR. JOHN HILBERT (803) 545-3283 JOHN.HILBERT@COLUMBIASC.GOV	W1
COMMUNICATIONS MCI COMMUNICATIONS (VERIZON) MR. RANDY GILBERT RANDY.GILBERT@VERIZONWIRELESS.COM	T7 OH10	WATER CITY OF WEST COLUMBIA 200 NORTH 12TH STREET WEST COLUMBIA, SC 28171-4044 MR. THOMAS BAKER 803-518-5097 LBAKER@WESTCOLUMBIASC.GOV	W2
COMMUNICATIONS UNKNOWN OWNER TELECOM	T8 OH12	ELECTRIC DOMINION ENERGY 220 OPERATIONS WAY (MC: J29) CAYCE, SC 29033 MS. CONSTANCE STROBLE 803-217-4733 CONSTANCE.STROBLE@DOMINIONENERGY.COM	E1 OH1
COMMUNICATIONS CHARTER/SPECTRUM (F.K.A. TIME WARNER CABLE) 33474 PLATT SPRINGS ROAD WEST COLUMBIA, SC 29201 MR. SHAWN EDWARDS (CHARTER COMM.) 803-705-4112 SHAWN.EDWARDS@CHARTER.COM	TV1 OH8	ELECTRIC MID-CAROLINA ELECTRIC CO. P.O. BOX 669 LEXINGTON, SC 29071 MR. MARK BISSETT MARKB@MCECOOP.COM MR. BRIAN SANDIER BRIAN@MCECOOP.COM	E2 OH3
ELECTRIC SANTEE COOPER 9302 OLD NUMBER SIX HWY 803-854-2131	OH2	ELECTRIC SCDOT 955 PARK ST. ROOM 117 PO BOX 191 COLUMBIA, SC 29202-0191 MR. STEVE LITTLEJOHN	E3 SIG
ELECTRIC DOMINION ENERGY 220 OPERATIONS WAY (MC: J29) CAYCE, SC 29033 MS. CONSTANCE STROBLE 803-217-4733 CONNIE.STROBLE@DOMINIONENERGY.COM	OH13	ELECTRIC UNKNOWN OWNER	E4 OH5
SEWER CITY OF COLUMBIA 1136 WASHINGTON STREET COLUMBIA, SC 29201 MR. JOHN HILBERT (803) 545-3283 JOHN.HILBERT@COLUMBIASC.GOV	FS1 S1	TRAFFIC SCDOT 955 PARK ST. ROOM 117 PO BOX 191 COLUMBIA, SC 29202-0191 MR. STEVE LITTLEJOHN	TF1
SEWER CITY OF WEST COLUMBIA 200 NORTH 12TH STREET WEST COLUMBIA, SC 28171-4044 MR. MARK WALLER 803-518-5097 MWALLER@WESTCOLUMBIASC.GOV	FS2 S2	UNKNOWN UNKNOWN/PRIVATE OWNER	UNK OH6 OH12



VICINITY MAP (APPROXIMATE SCALE 1" = 0.5 mi)

INDEX OF UTILITY SHEETS

TITLE SHEET	CCR_PH1_SHT_U1	U1
UTILITY LEGEND	CCR_PH1_SHT_U2	U2
UTILITY CORRIDOR TYPICAL SECTIONS	OMITTED	U3
UTILITY POLE & GRAVITY DATA	OMITTED	U4
UTILITY GENERAL NOTES	CCR_PH1_SHT_U5	U5
UTILITY PLAN SHEETS	CCR_PH1_SHT_U32-	U32-37,
	CCR_PH1_SHT_U81	U56-60, U78, U80-U81

NOTE: ALL WORKMANSHIP ON THIS PROJECT IS TO CONFIRM WITH SCDOT STANDARD SPECIFICATIONS FOR HIGHWAY CONSTRUCTION (LATEST EDITION), AND BOOK OF STANDARD DRAWINGS FOR ROAD CONSTRUCTION (LATEST PUBLISHED ENGLISH REVISION)

3 DAYS BEFORE DIGGING
IN SOUTH CAROLINA
CALL 1-800-922-0983
PALMETTO UTILITY
PROTECTION SERVICE

APPROXIMATE LOCATION OF ROADWAY
LONGITUDE: 81° 02' 22.80"
LATITUDE: 34° 05' 46.08"

CONSULTING ENGINEERING FIRM

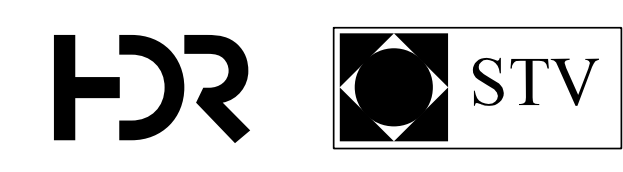
CERTIFICATION STATEMENT:
THESE PLANS WERE PREPARED AND CERTIFIED BY THE CONSULTANT FOR COMPLETENESS. NO REVIEWS OR SIGNATURES BY THE SCDOT ARE REQUIRED.

FOR INFORMATION ONLY

FED. NO. DEV. NO.	STATE	COUNTY	FILE NO.	ROADROUTE NO.	SHEET NO.
3	S.C.	LEXINGTON/RICHLAND	P039718	I-26/204-126	U3

OMITTED

PLANS PREPARED BY



PLANS PREPARED FOR



CAROLINA CROSSROADS

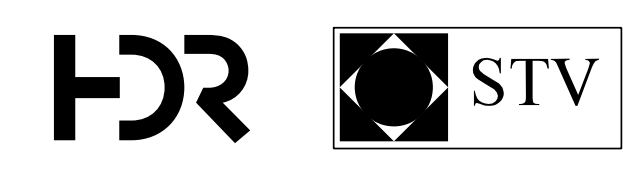
UTILITY RELOCATION
TYPICAL SECTION
OPTIONS

FOR INFORMATION ONLY

FED. NO. DEV. NO.	STATE	COUNTY	FILE NO.	ROADROUTE NO.	SHEET NO.
3	S.C.	LEXINGTON/RICHLAND	0397 8	I-29&204-120	U4

OMITTED

PLANS PREPARED BY



PLANS PREPARED FOR



CAROLINA CROSSROADS

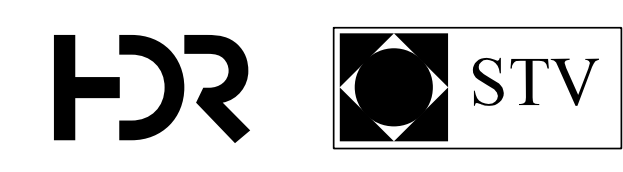
UTILITY POLE & GRAVITY DATA

FOR INFORMATION ONLY

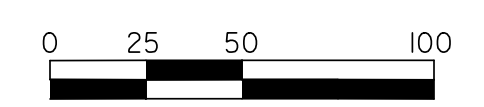
FED. NO. DEV. NO.	STATE	COUNTY	FILE NO.	ROADROUTE NO.	SHEET NO.
3	S.C.	LEXINGTON/RICHLAND	P039718	I26&204-126	U5

SEE PRELIMINARY UTILITY COORDINATION REPORT FOR UTILITY COORDINATION GENERAL NOTES

PLANS PREPARED BY



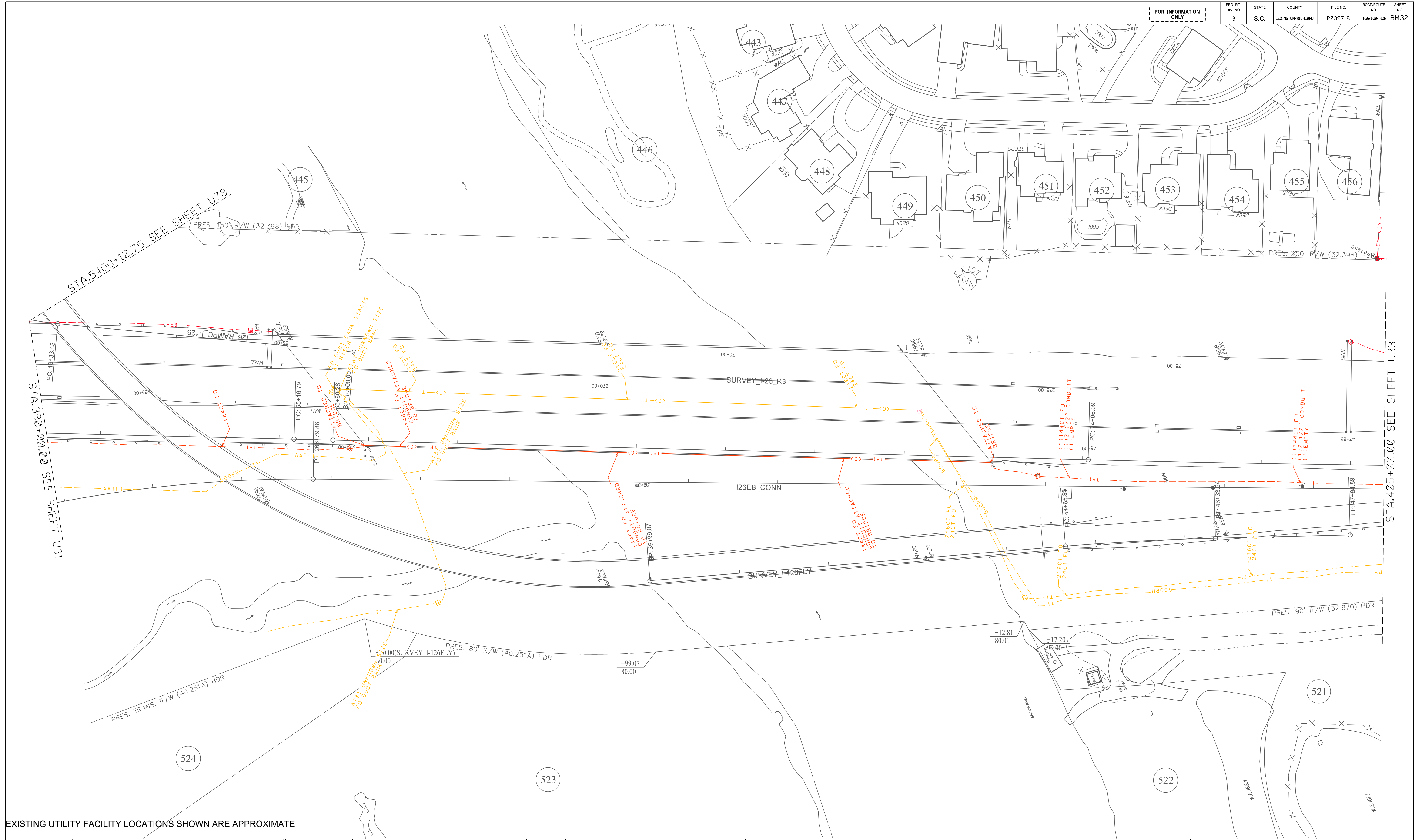
PLANS PREPARED FOR



CAROLINA CROSSROADS

UTILITY COORDINATION
GENERAL NOTES

FOR INFORMATION ONLY



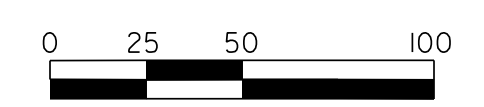
EXISTING UTILITY FACILITY LOCATIONS SHOWN ARE APPROXIMATE

PLANS PREPARED BY

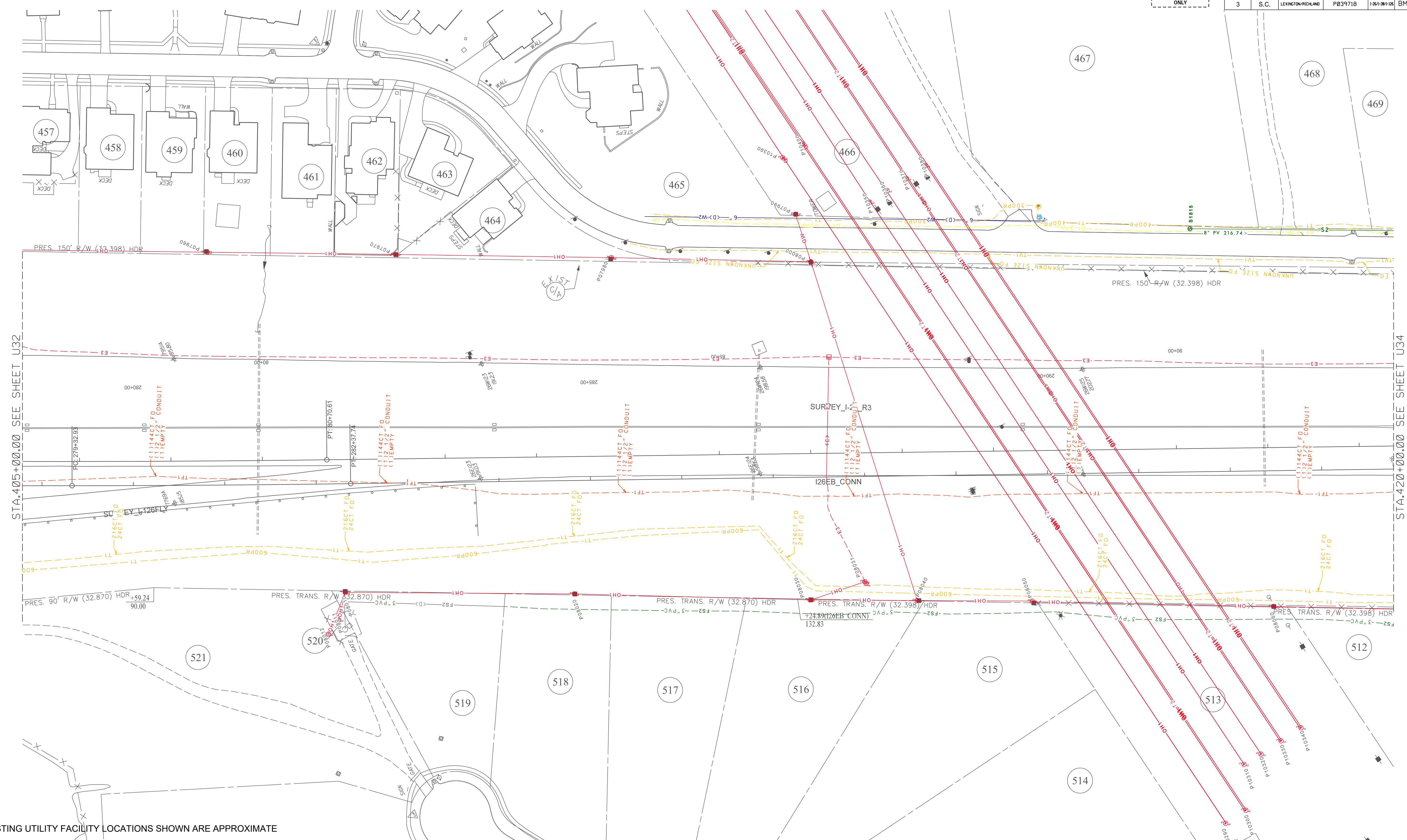


PLANS PREPARED FOR

 South Carolina Department of Transportation



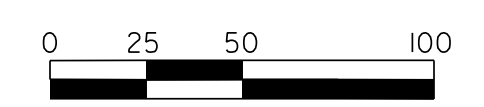
CAROLINA CROSSROADS
 UTILITY
 BASE MAP



STA. 405+00.00 SEE SHEET U32

STA. 420+00.00 SEE SHEET U34

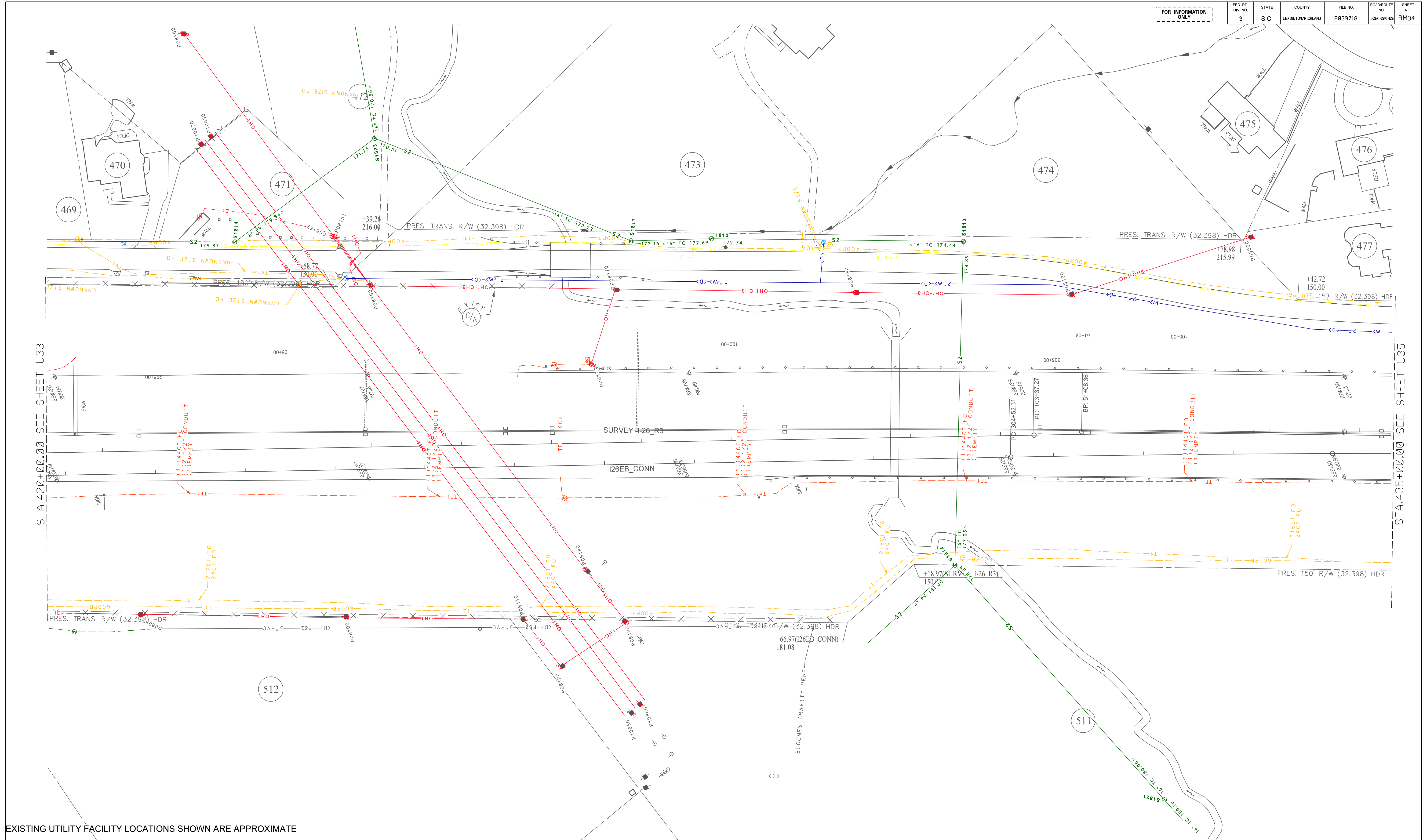
EXISTING UTILITY FACILITY LOCATIONS SHOWN ARE APPROXIMATE



CAROLINA CROSSROADS
UTILITY
BASE MAP

FOR INFORMATION ONLY

FED. NO.	STATE	COUNTY	FILE NO.	ROADROUTE NO.	SHEET NO.
3	S.C.	LEXINGTON/RICHMOND	P039718	I-26/181	BM34



EXISTING UTILITY FACILITY LOCATIONS SHOWN ARE APPROXIMATE

PLANS PREPARED BY

PLANS PREPARED FOR

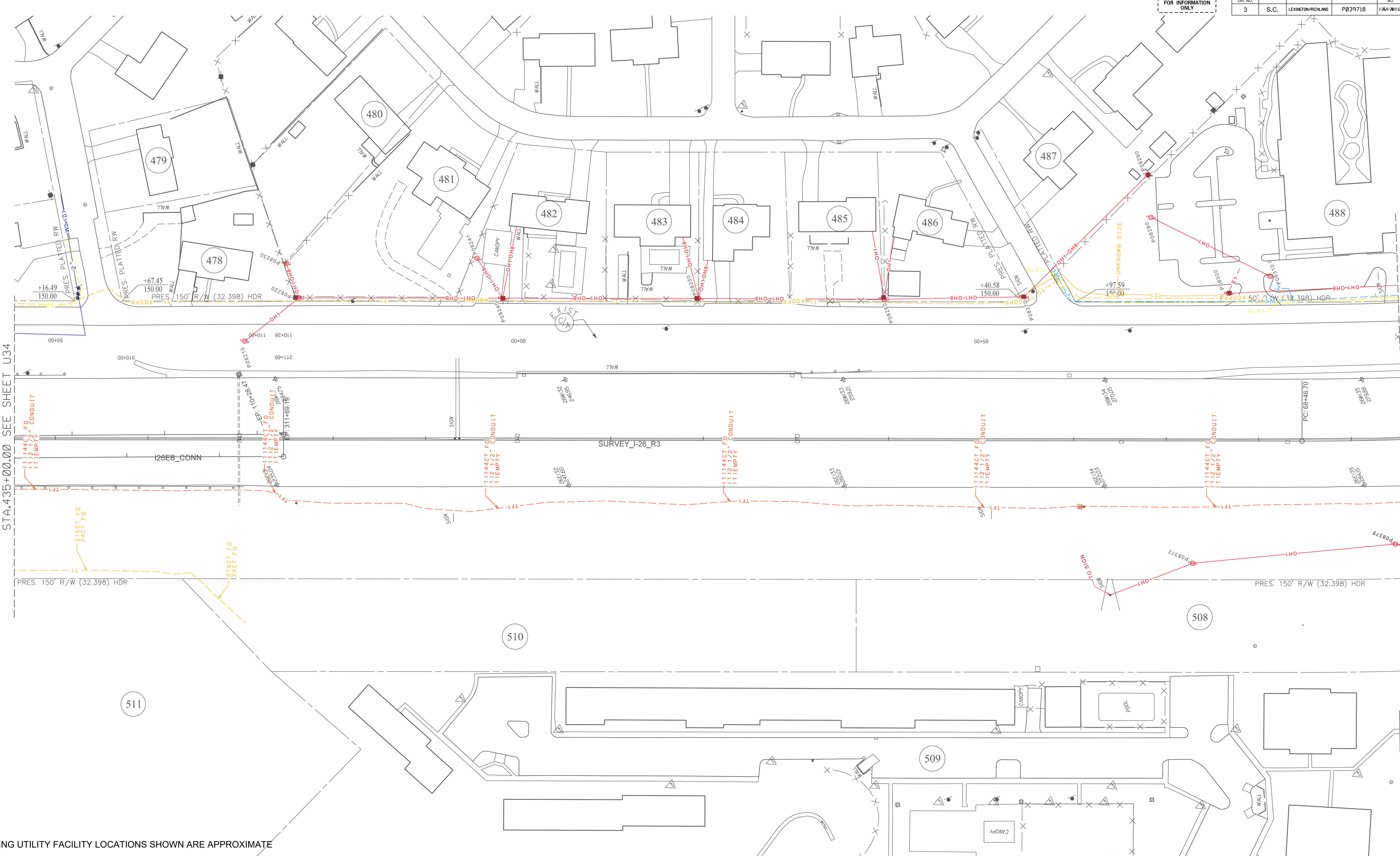
South Carolina Department of Transportation

CAROLINA CROSSROADS

**UTILITY
BASE MAP**

FED. NO.	STATE	COUNTY	FILE NO.	ROADROUTE NO.	SHEET NO.
3	S.C.	LEXINGTON/RICHLAND	P039718	I-26/201/58	BM35

FOR INFORMATION ONLY



STA. 435+00.00 SEE SHEET U34

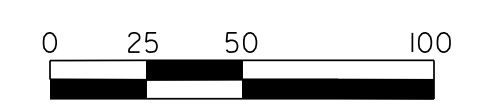
STA. 450+00.00 SEE SHEET U36

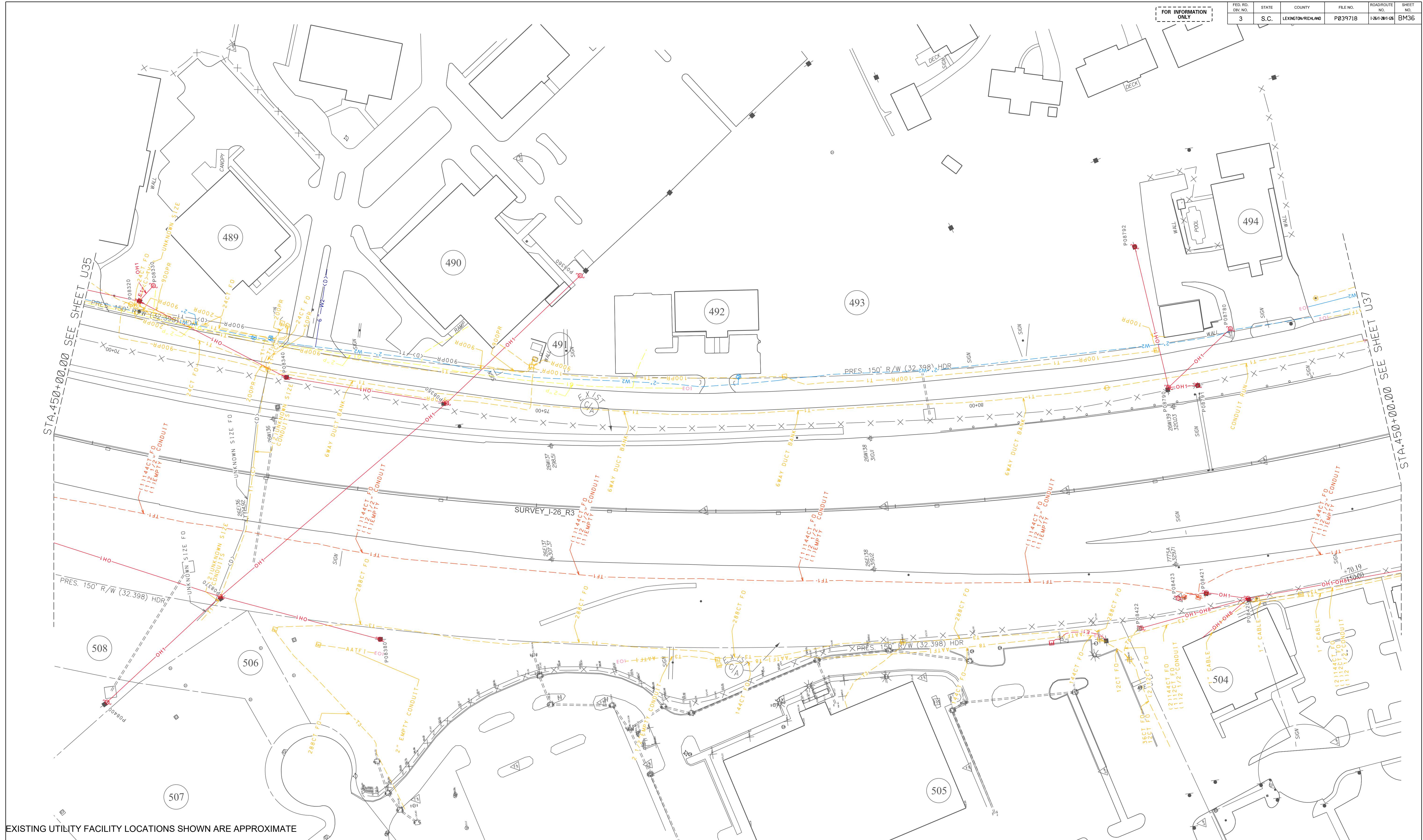
EXISTING UTILITY FACILITY LOCATIONS SHOWN ARE APPROXIMATE

PLANS PREPARED BY

PLANS PREPARED FOR

CAROLINA CROSSROADS
UTILITY BASE MAP





PLANS PREPARED BY

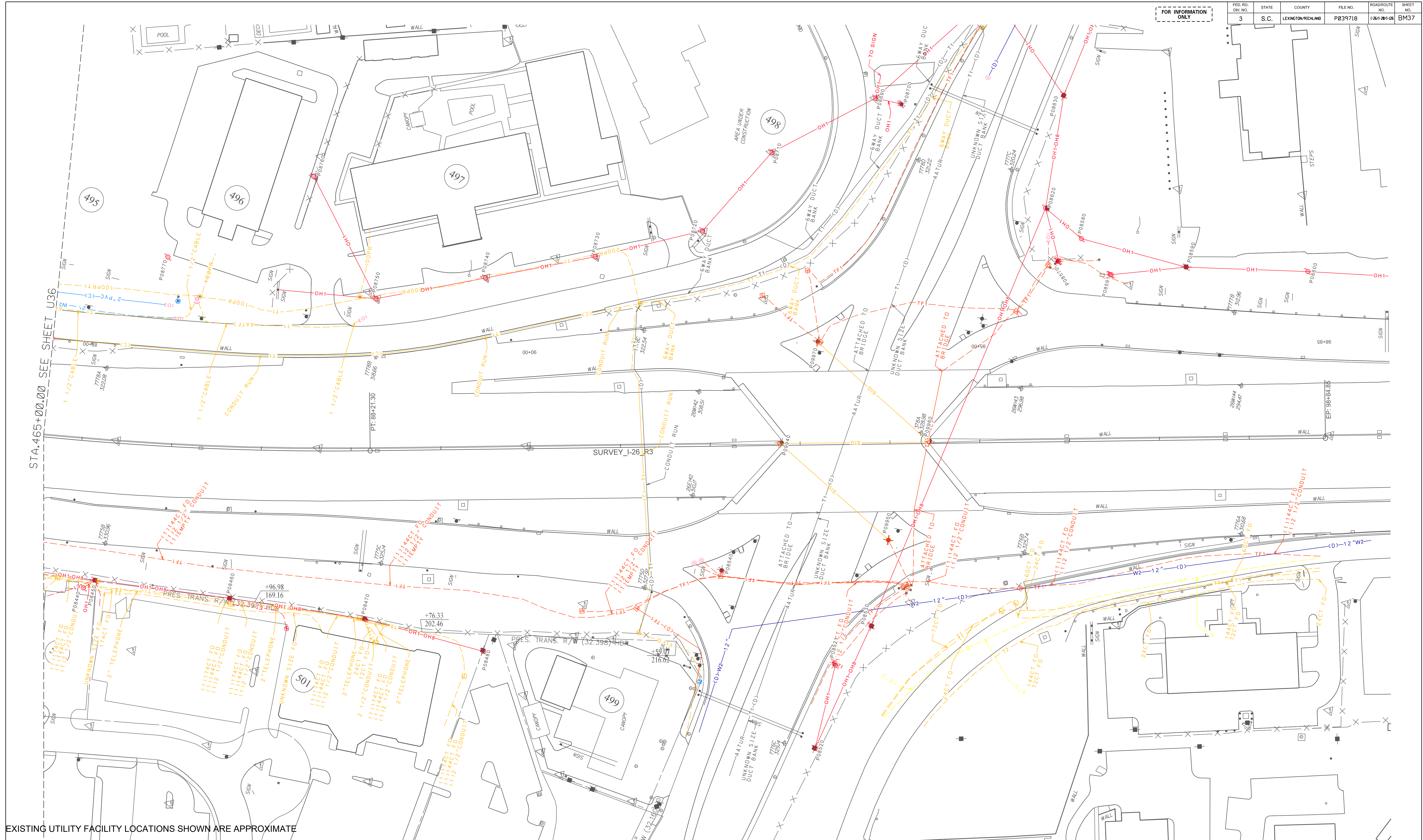
PLANS PREPARED FOR

0 25 50 100

CAROLINA CROSSROADS

UTILITY BASE MAP

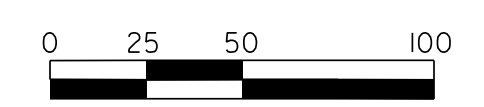
FOR INFORMATION ONLY	FED. RD. DIST. NO.	STATE	COUNTY	FILE NO.	ROADROUTE NO.	SHEET NO.
	3	S.C.	LEWIS/CLAY	P039718	1-261/201/108	BM37



EXISTING UTILITY FACILITY LOCATIONS SHOWN ARE APPROXIMATE

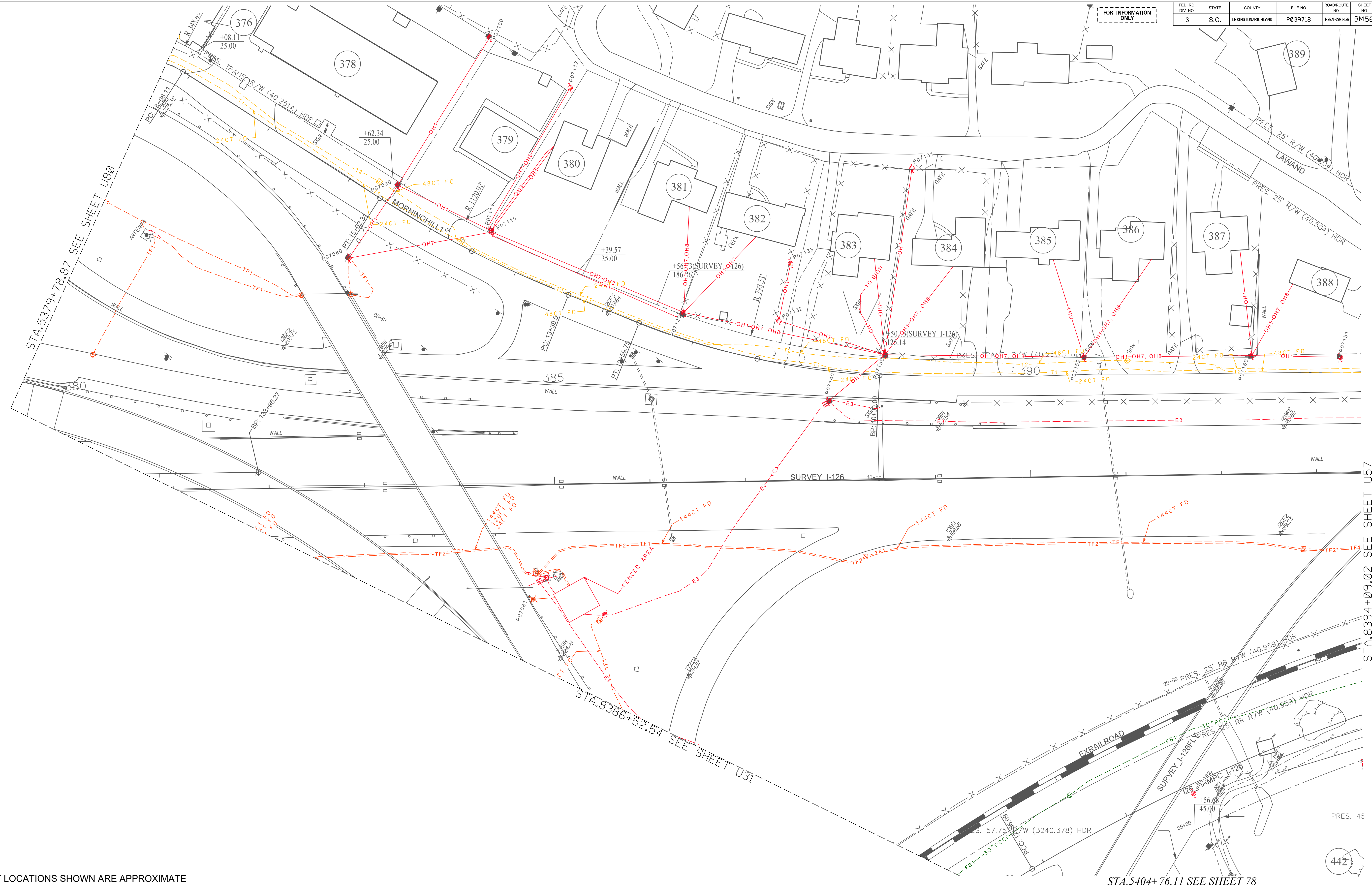
PLANS PREPARED BY
HR **STV**

PLANS PREPARED FOR
SCDOT
 South Carolina Department of Transportation



CAROLINA CROSSROADS
 UTILITY
 BASE MAP

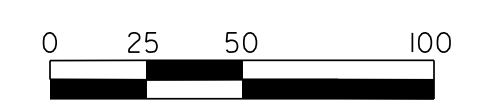
FOR INFORMATION ONLY



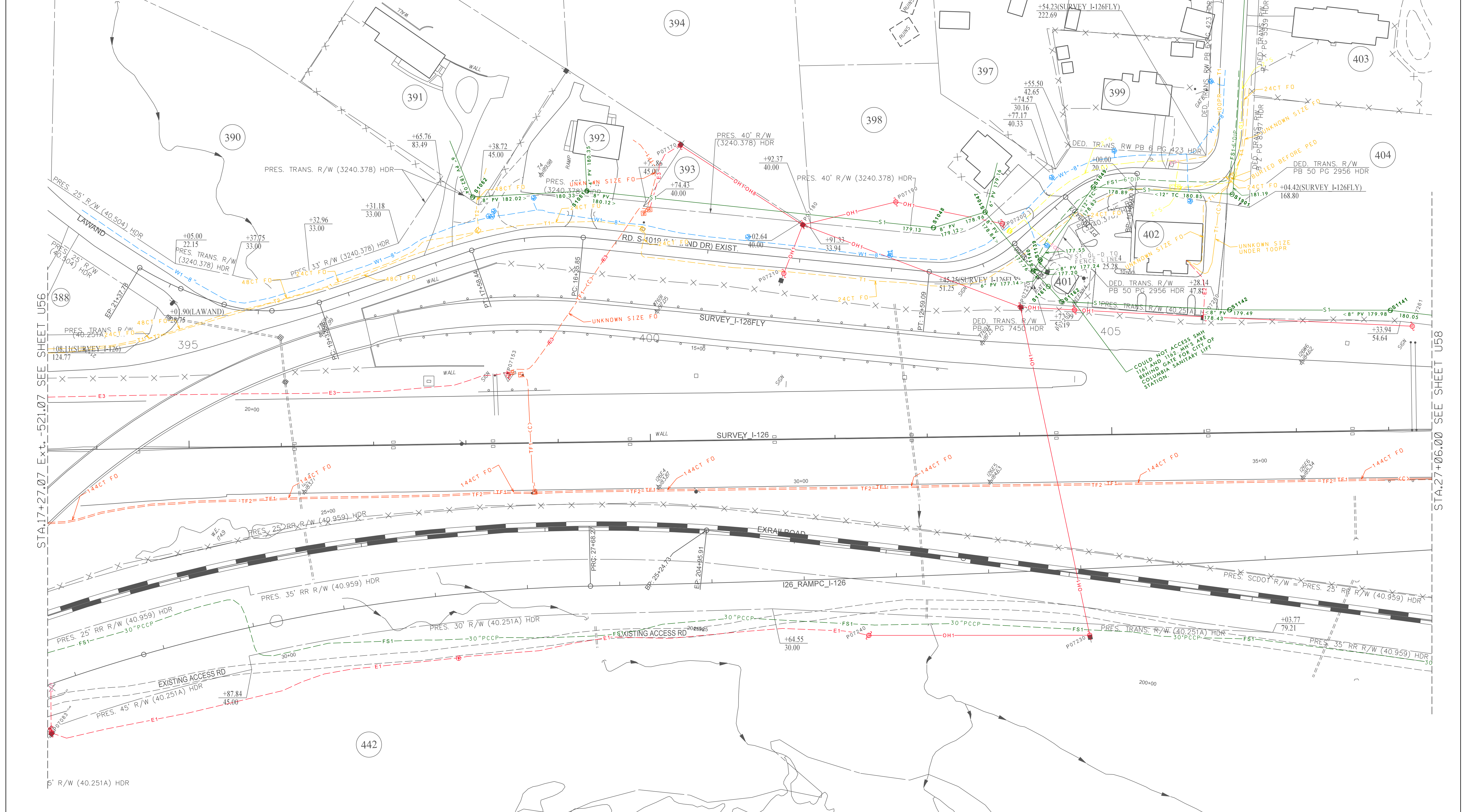
EXISTING UTILITY FACILITY LOCATIONS SHOWN ARE APPROXIMATE

PLANS PREPARED BY
HDR **STV**

PLANS PREPARED FOR
SCDOT
 South Carolina Department of Transportation



CAROLINA CROSSROADS
 UTILITY
 BASE MAP



STA. 17+27.07 Ext. -521.07 SEE SHEET U56

SEE SHEET U58 STA. 27+06.00

EXISTING UTILITY FACILITY LOCATIONS SHOWN ARE APPROXIMATE

PLANS PREPARED BY

HDR **STV**

PLANS PREPARED FOR

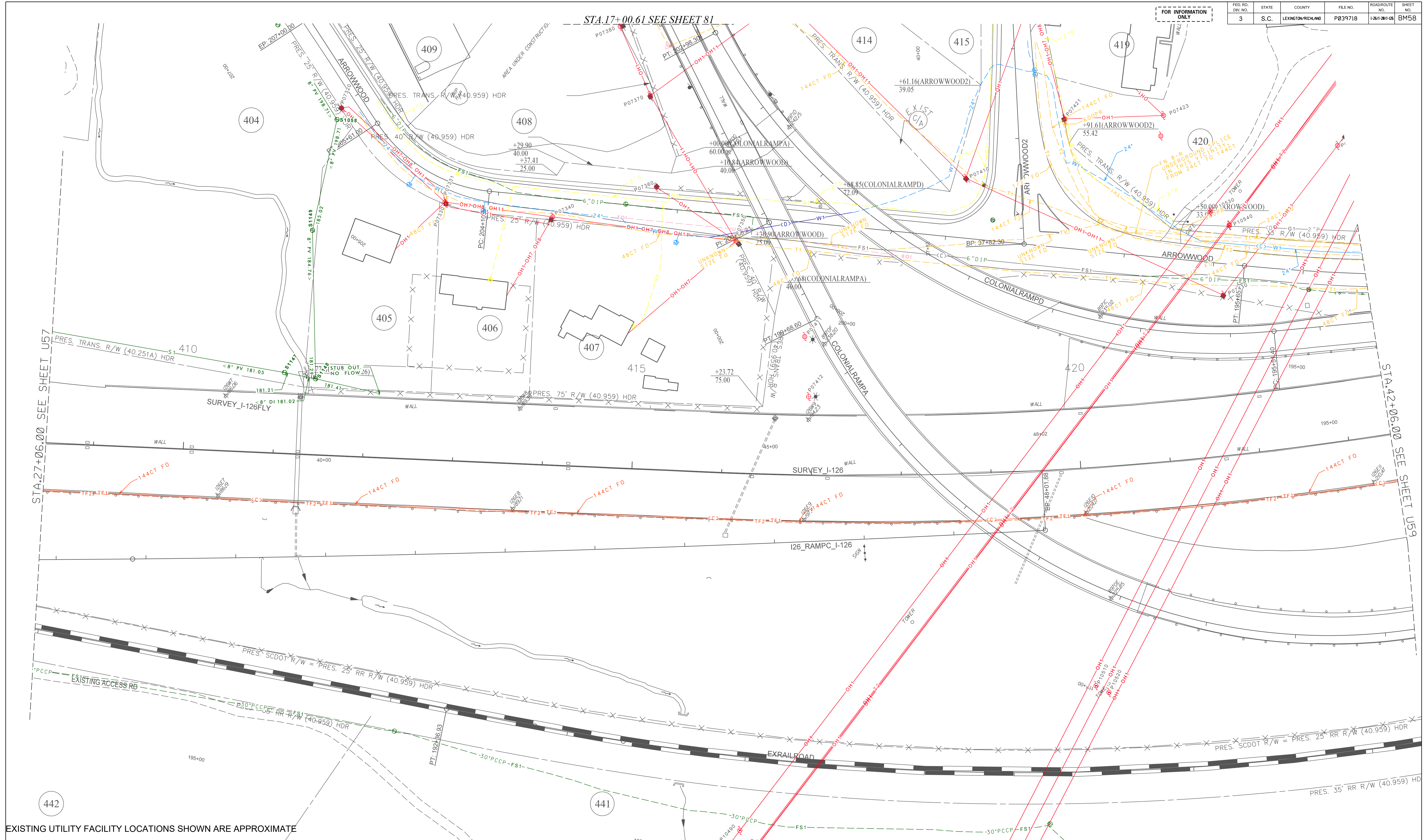
SCDOT
South Carolina Department of Transportation

CAROLINA CROSSROADS

UTILITY
BASE MAP

FED. NO.	STATE	COUNTY	FILE NO.	ROADROUTE NO.	SHEET NO.
3	S.C.	LEXINGTON/RICHMOND	P039718	I-26/201/105	BM58

FOR INFORMATION ONLY



EXISTING UTILITY FACILITY LOCATIONS SHOWN ARE APPROXIMATE

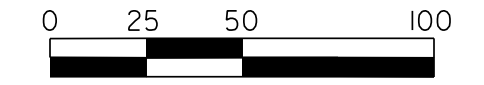
PLANS PREPARED BY

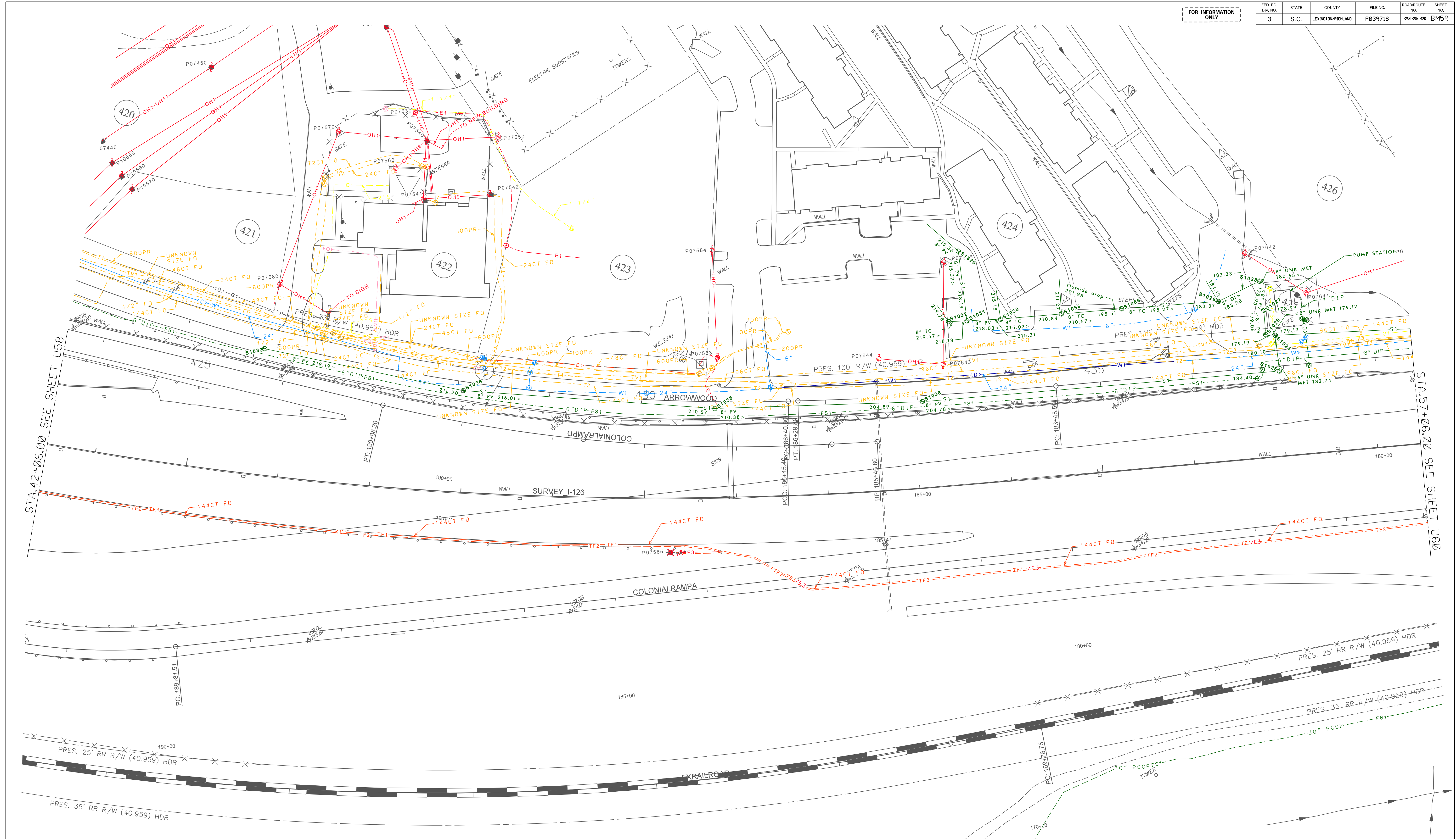
PLANS PREPARED FOR

South Carolina Department of Transportation

CAROLINA CROSSROADS

UTILITY BASE MAP





EXISTING UTILITY FACILITY LOCATIONS SHOWN ARE APPROXIMATE

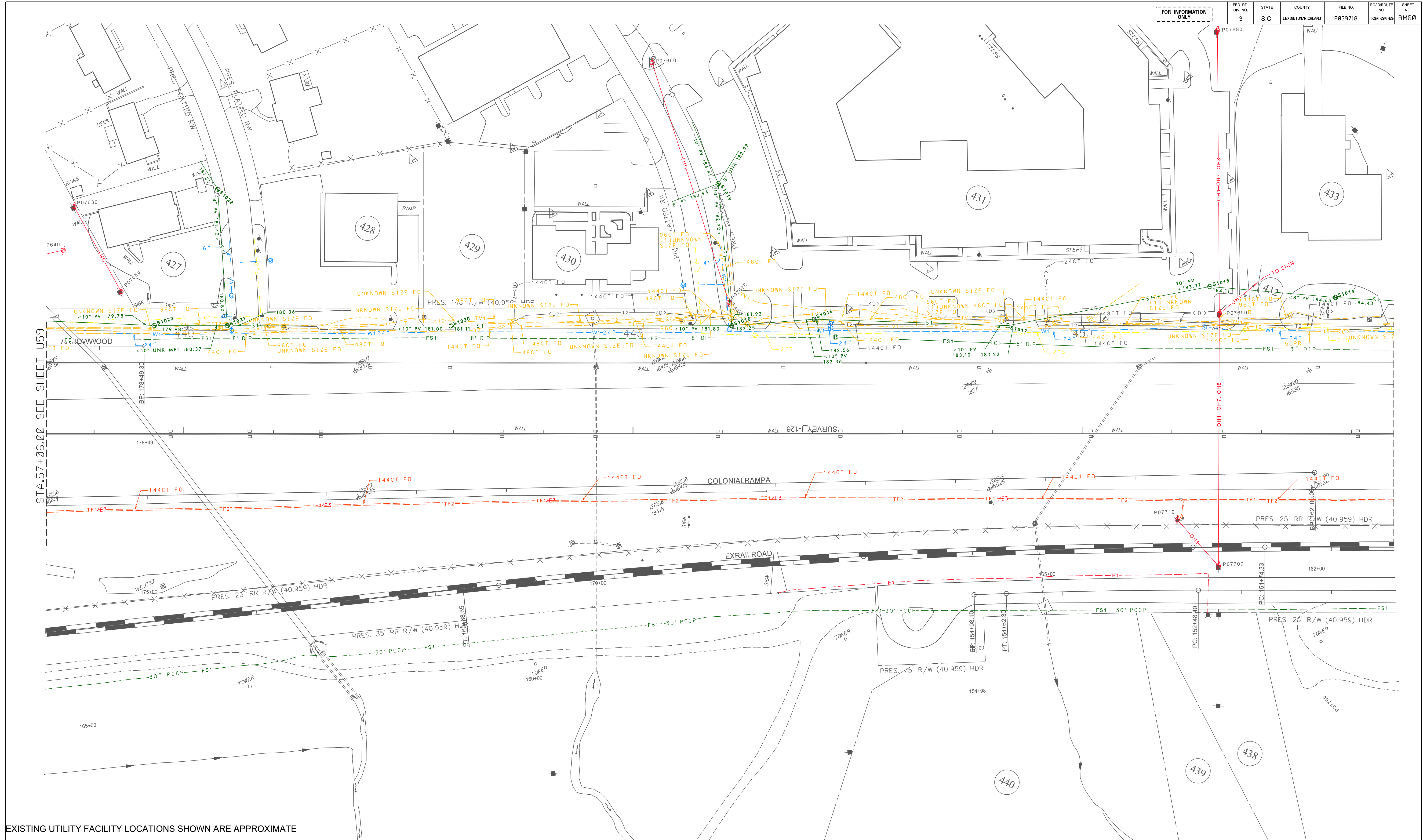
PLANS PREPARED BY

PLANS PREPARED FOR

0 25 50 100

CAROLINA CROSSROADS

UTILITY BASE MAP



EXISTING UTILITY FACILITY LOCATIONS SHOWN ARE APPROXIMATE

PLANS PREPARED BY

PLANS PREPARED FOR

CAROLINA CROSSROADS

UTILITY BASE MAP

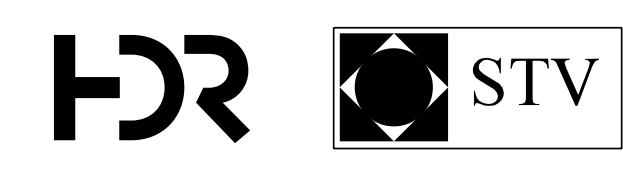
FOR INFORMATION ONLY

FED. NO.	STATE	COUNTY	FILE NO.	ROADROUTE NO.	SHEET NO.
3	S.C.	LEXINGTON/RICHMOND	P039718	1-26/201-105	BM78

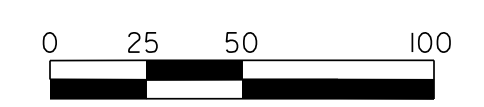


EXISTING UTILITY FACILITY LOCATIONS SHOWN ARE APPROXIMATE

PLANS PREPARED BY



PLANS PREPARED FOR

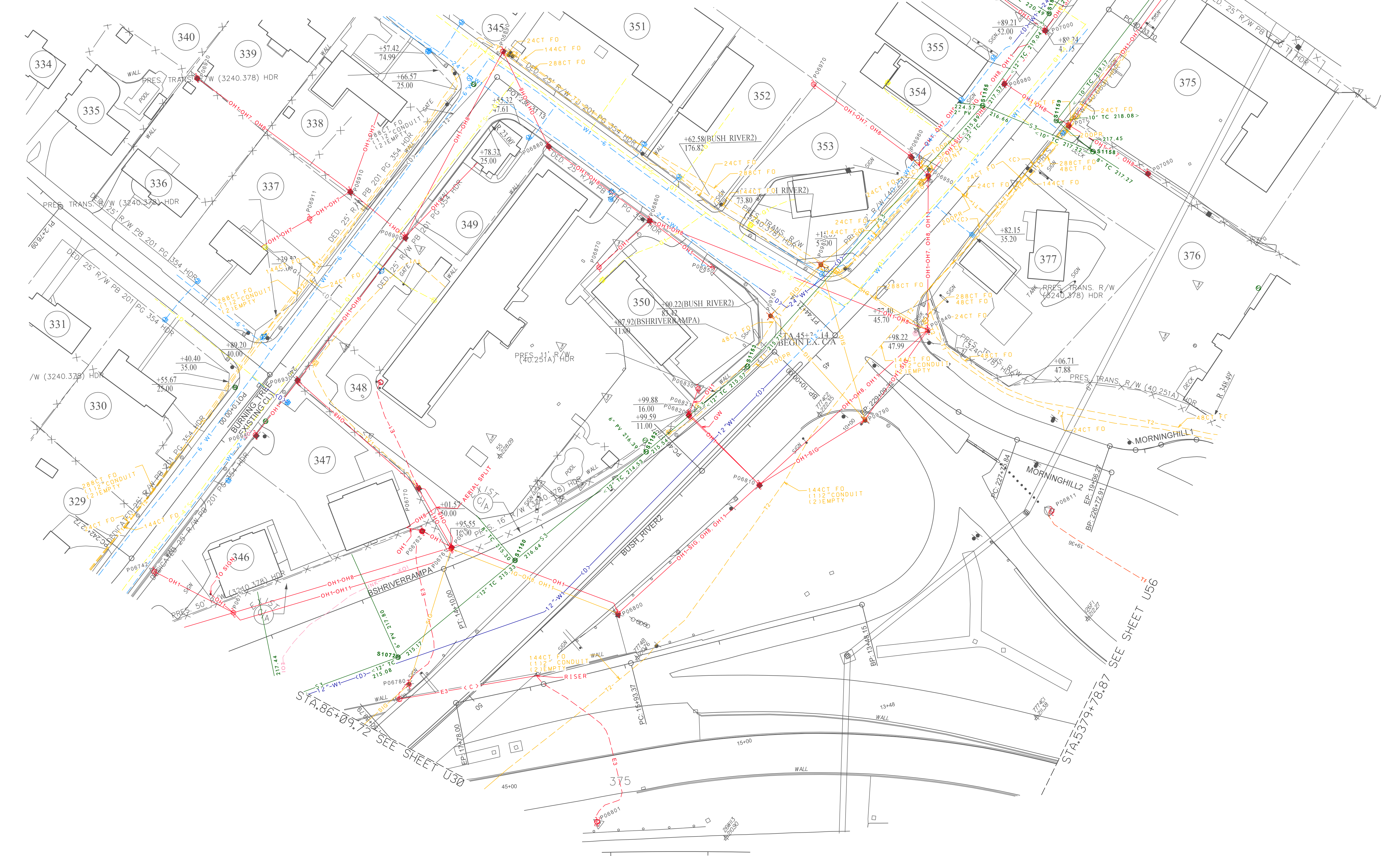


CAROLINA CROSSROADS

UTILITY
BASE MAP

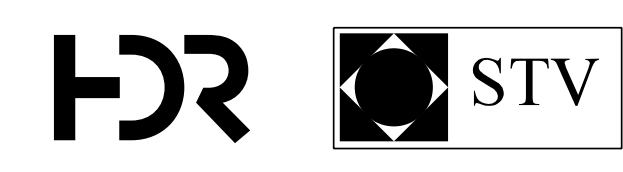
FOR INFORMATION ONLY

FED. NO.	STATE	COUNTY	FILE NO.	ROADROUTE NO.	SHEET NO.
3	S.C.	LEXINGTON/RICHMOND	P039718	I-26/201/108	BM80



EXISTING UTILITY FACILITY LOCATIONS SHOWN ARE APPROXIMATE

PLANS PREPARED BY

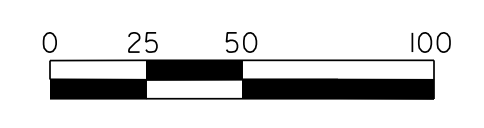


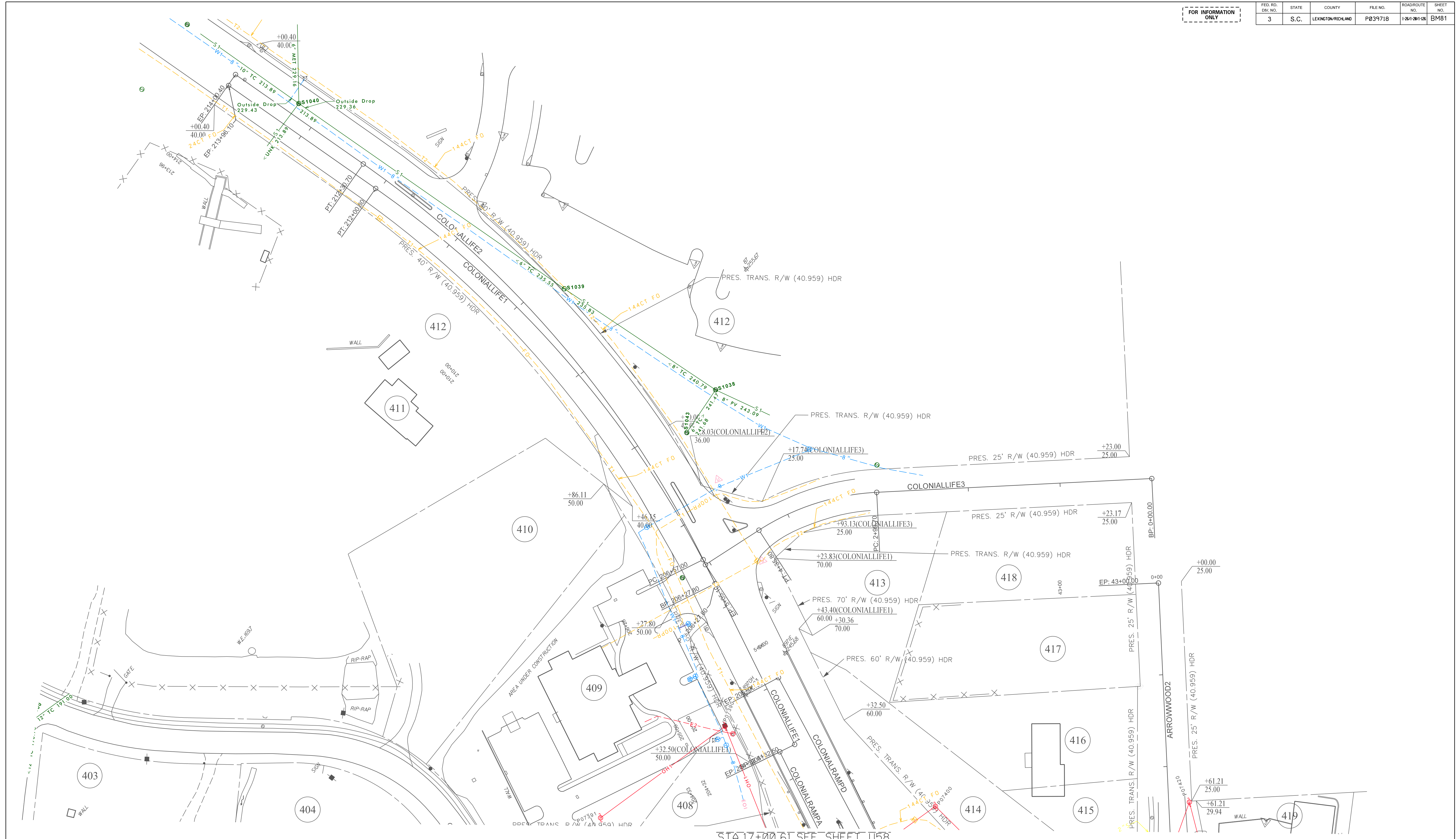
PLANS PREPARED FOR



CAROLINA CROSSROADS

UTILITY
BASE MAP





EXISTING UTILITY FACILITY LOCATIONS SHOWN ARE APPROXIMATE

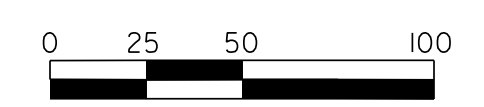
STA. 17+00.61 SEE SHEET U58

PLANS PREPARED BY



PLANS PREPARED FOR

 South Carolina Department of Transportation



CAROLINA CROSSROADS
 UTILITY
 BASE MAP