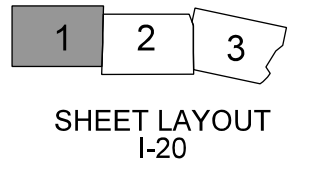
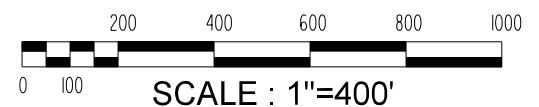
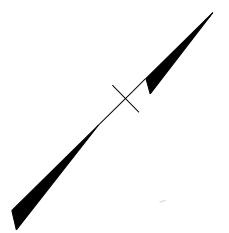


LEGEND

- PROPOSED SIGN FOR PHASE 3C
- PROPOSED SIGN FOR PHASE 3E TO ASSIST STRUCTURE DESIGN IN PHASE 3C
- PROPOSED SIGN FOR PHASE 3E
- FUTURE LANES PHASE 3C CONSTRUCTION
- MEDIAN BARRIER

**CAROLINA CROSSROADS
CONCEPTUAL SIGNING ALONG
PHASE 3C**





The legend explains these will be erected in 3E so remove from the label at each sign.

Remove note. Cannot explain that here.

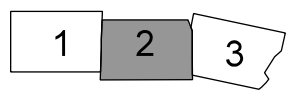
Only show the "Interim Condition" lanes so remove future lanes. There is another file that can be used for that.

Spelling (check all) Redundant. Remove one OH# label. Same for all.

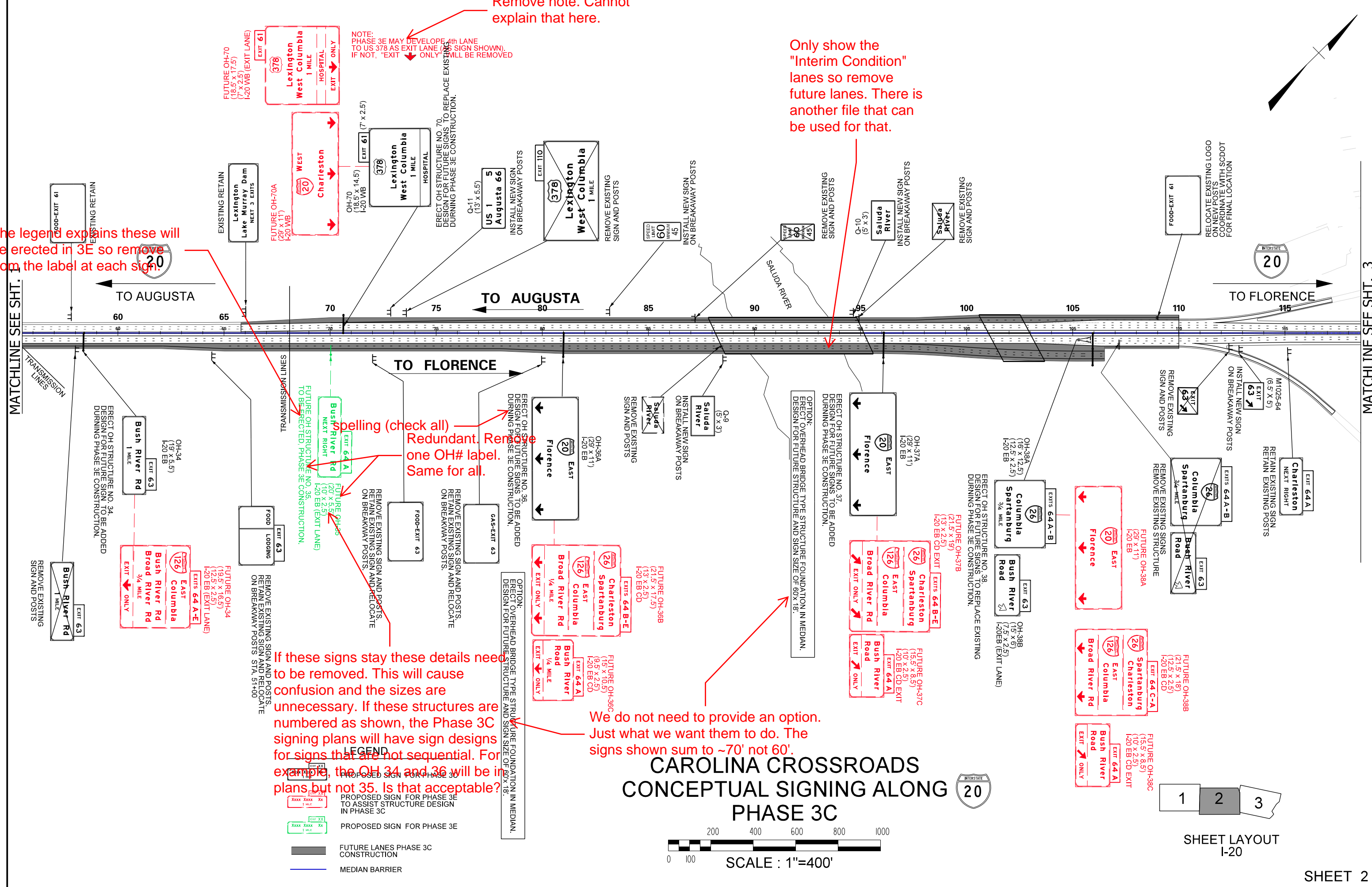
If these signs stay these details need to be removed. This will cause confusion and the sizes are unnecessary. If these structures are numbered as shown, the Phase 3C signing plans will have sign designs for signs that are not sequential. For example, the OH 34 and 36 will be in plans but not 35. Is that acceptable?

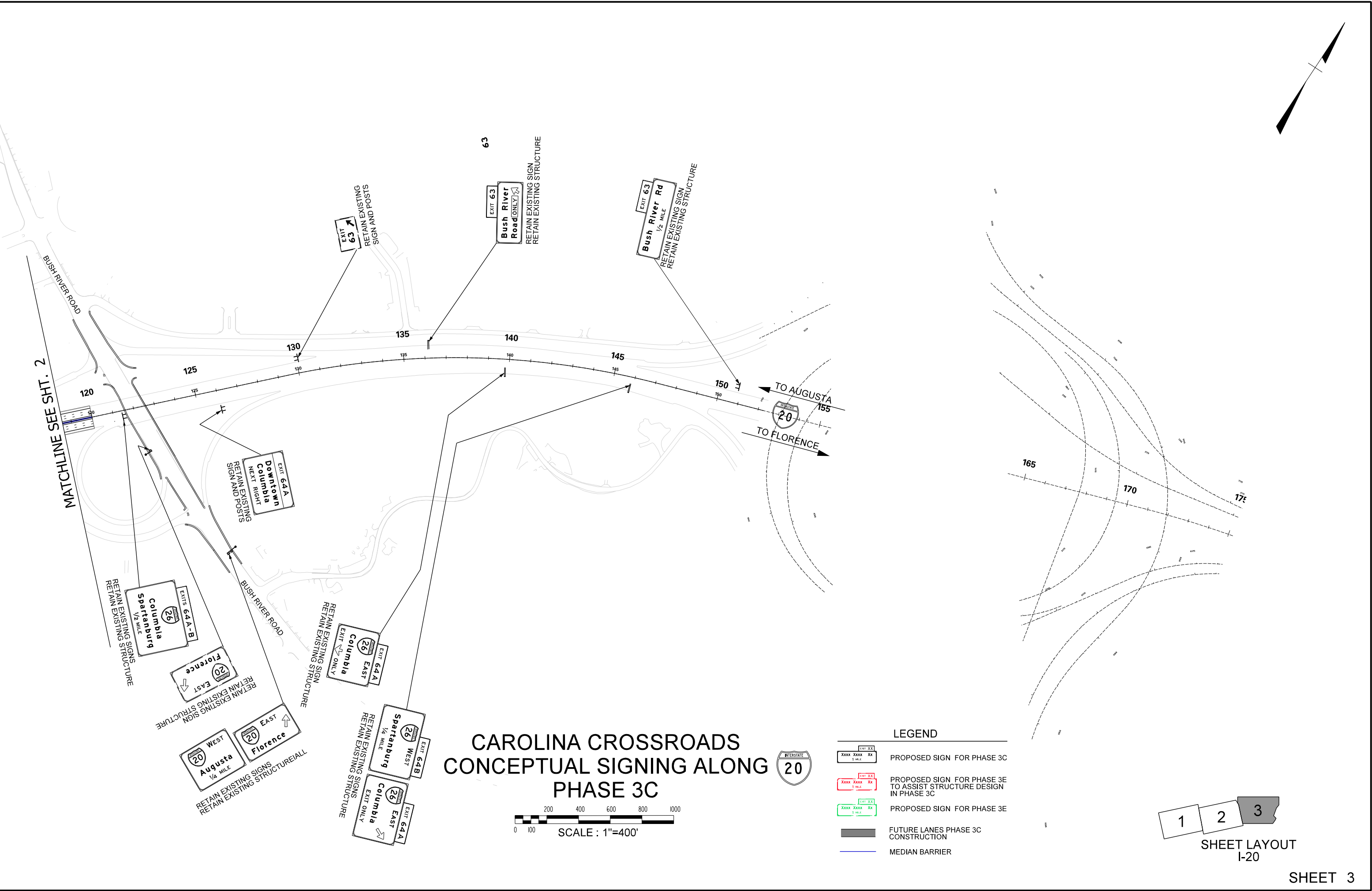
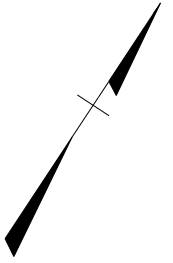
We do not need to provide an option. Just what we want them to do. The signs shown sum to ~70' not 60'.

CAROLINA CROSSROADS CONCEPTUAL SIGNING ALONG PHASE 3C



SHEET LAYOUT I-20





CAROLINA CROSSROADS CONCEPTUAL SIGNING ALONG PHASE 3C



LEGEND

	PROPOSED SIGN FOR PHASE 3C
	PROPOSED SIGN FOR PHASE 3E TO ASSIST STRUCTURE DESIGN IN PHASE 3C
	PROPOSED SIGN FOR PHASE 3E
	FUTURE LANES PHASE 3C CONSTRUCTION
	MEDIAN BARRIER



SHEET LAYOUT
I-20