

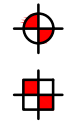
SUBSURFACE TESTING DATA

Boring ID	Test Type	Northing	Easting	Latitude	Longitude	Test Elevation (MSL)	Test Depth (ft)
B-1	STB	1100386.928	1576889.113	34.84966529	-82.41017664	923.6	48.5
B-2	STB	1100456.638	1576906.351	34.84985744	-82.41012237	923.4	68.5
BS-1	Bulk Sample	1100384.928	1576892.577	34.84965992	-82.41016501	923.1	0-5
BS-2	Bulk Sample	1100461.130	1576897.999	34.84986947	-82.41015040	922.9	0-5
CPT-1	CPT	1100395.976	1576874.050	34.84968958	-82.41022725	923.7	
CPT-2	CPT	1100447.994	1576921.540	34.84983426	-82.41007136	923.7	
P-1 ¹	STB	1100012.195	1576657.851	34.84862714	-82.41093026	939.1	2.2
P-2 ¹	STB	1100134.715	1576743.783	34.84896695	-82.41064947	930.6	3.0
P-3 ¹	STB	1100273.017	1576804.876	34.84934919	-82.41045218	925.3	2.8
P-4 ¹	STB	1100568.238	1576988.748	34.85016712	-82.40985285	926.1	2.8
P-5 ¹	STB	1100707.624	1577046.331	34.85055220	-82.40966730	923.1	2.7
P-6 ¹	STB	1100832.447	1577130.710	34.85089828	-82.40939178	922.0	3.1

1 = Bulk Soil Sample BS-3 was a composite sample created from the upper 2-ft. of auger cuttings from the specified boreholes



LEGEND:



SOIL TEST BORING LOCATION



CONE PENETRATION TEST LOCATION



BULK SAMPLE TEST LOCATION

4				
3				
2				
1				
REV.	BY	DATE	DESCRIPTION OF REVISION	
TOPO.		DATE		
DWG.	CTC	DATE 12.2.24	GROUP	
R/W		DATE		



F&ME CONSULTANTS, INC.
COLUMBIA, SC

S-23-80 OVER REEDY RIVER
GREENVILLE COUNTY, SOUTH CAROLINA

BORING LOCATION PLAN

SCDOT PROJECT ID: P038771

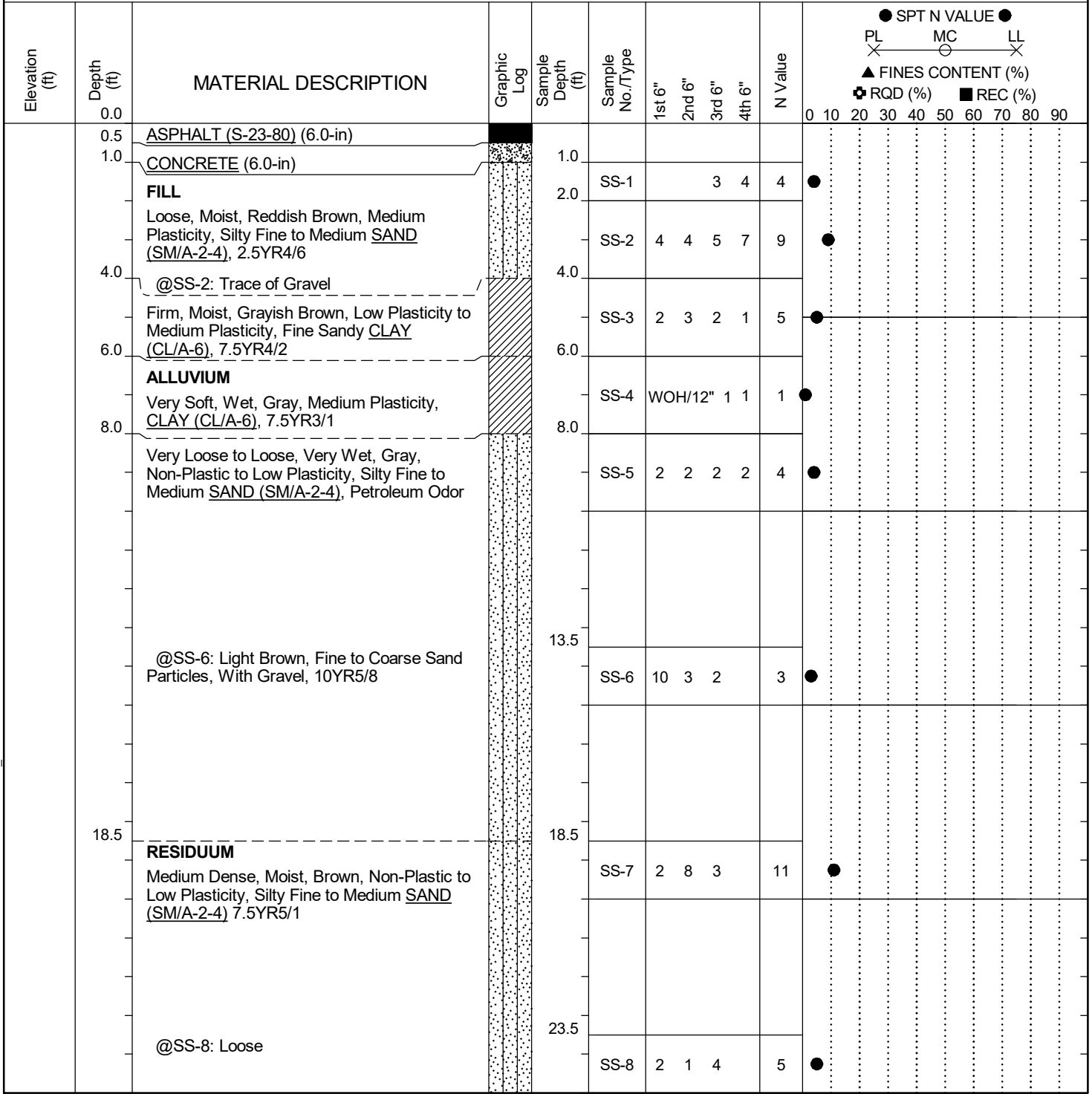
FME JOB NO. G7100.008 task 001

SCALE: 1" = 100'

FIGURE 2

SCDOT Soil Test Log

Project ID: P038771	County: Greenville	Boring No.: B-1
Site Description: S-23-80 over Reedy River	Route: S-23-80	
Eng./Geo.: M. Miller	Boring Location:	Offset:
Elev.: ft	Latitude:	Longitude:
Total Depth: 48.5 ft	Soil Depth: 28.5 ft	Core Depth: 20 ft
Bore Hole Diameter (in): 3"	Sampler Configuration	Liner Required: Y N
Drill Machine: CME 45B	Drill Method: Mud Rotary	Hammer Type: Automatic
Core Size: NQ	Driller: C. Taylor	Energy Ratio: 86.4%
Groundwater: TOB	Not Measured	24HR



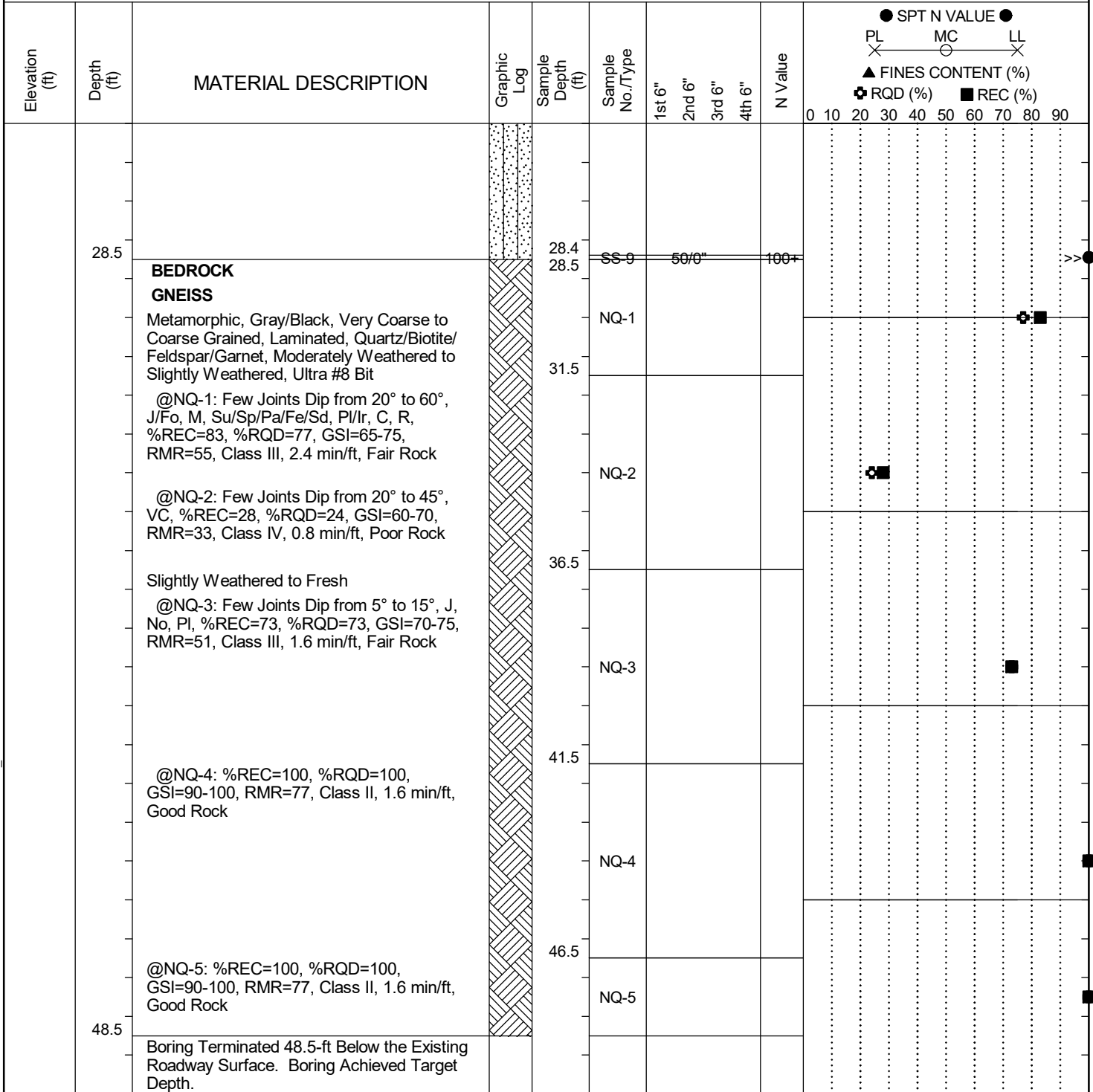
LEGEND Continued Next Page

SAMPLER TYPE		DRILLING METHOD	
SS - Split Spoon	NQ - Rock Core, 1-7/8"	HSA - Hollow Stem Auger	RW - Rotary Wash
UD - Undisturbed Sample	CU - Cuttings	CFA - Continuous Flight Augers	RC - Rock Core
AWG - Rock Core, 1-1/8"	CT - Continuous Tube	DC - Driving Casing	

SC.DOT G7100.008 - TASK 00001 - S-80 OVER REEDY RIVER.GPJ SCDOT_DATATEMPLATE.GDT 12/4/24

SCDOT Soil Test Log

Project ID: P038771	County: Greenville	Boring No.: B-1
Site Description: S-23-80 over Reedy River	Route: S-23-80	
Eng./Geo.: M. Miller	Boring Location:	Offset:
Elev.: ft	Latitude:	Longitude:
Total Depth: 48.5 ft	Soil Depth: 28.5 ft	Core Depth: 20 ft
Bore Hole Diameter (in): 3"	Sampler Configuration	Liner Required: Y N
Drill Machine: CME 45B	Drill Method: Mud Rotary	Hammer Type: Automatic
Core Size: NQ	Driller: C. Taylor	Energy Ratio: 86.4%
	Groundwater: TOB	Not Measured
		24HR



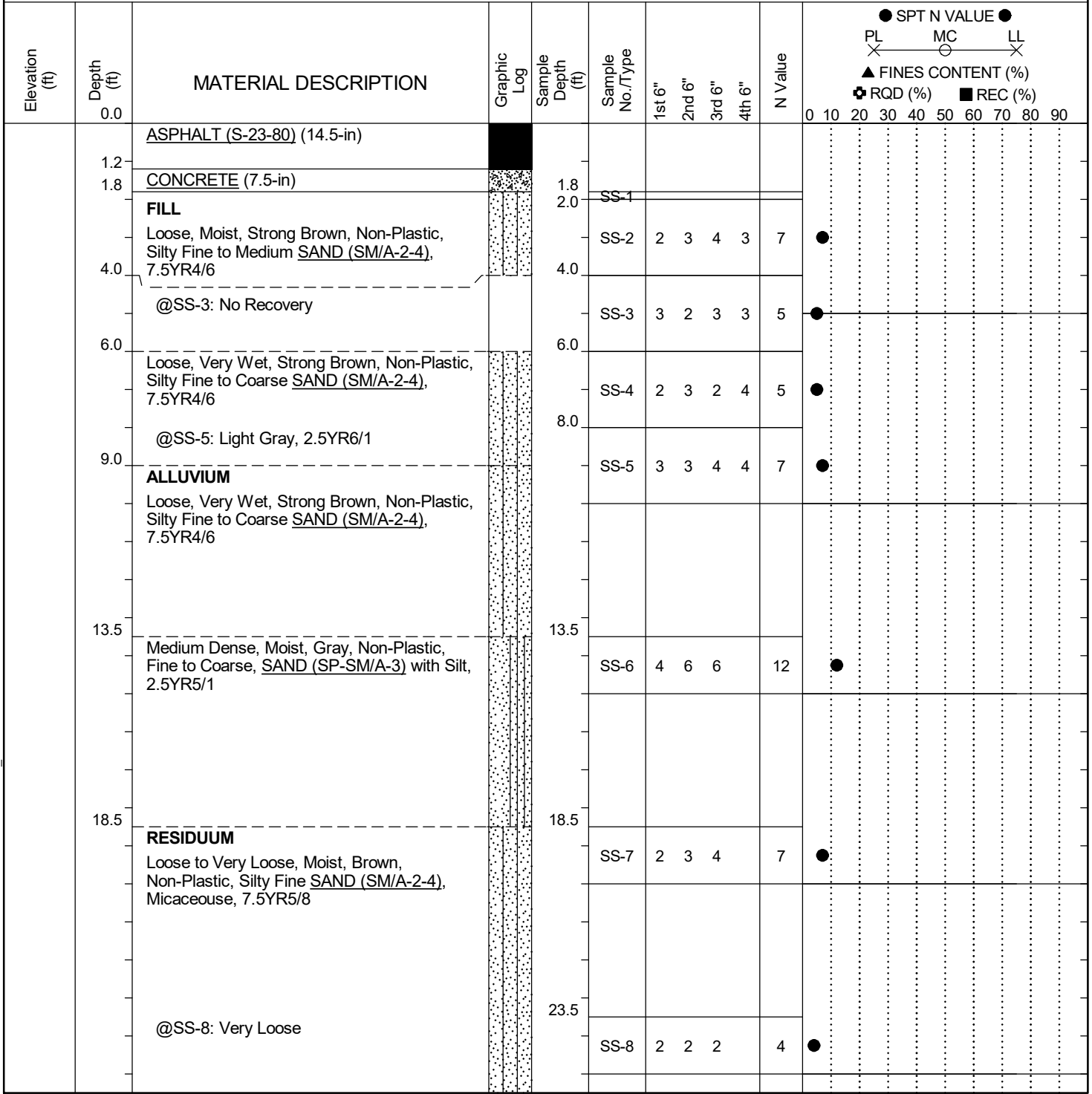
LEGEND

SAMPLER TYPE		DRILLING METHOD	
SS - Split Spoon	NQ - Rock Core, 1-7/8"	HSA - Hollow Stem Auger	RW - Rotary Wash
UD - Undisturbed Sample	CU - Cuttings	CFA - Continuous Flight Augers	RC - Rock Core
AWG - Rock Core, 1-1/8"	CT - Continuous Tube	DC - Driving Casing	

SC.DOT G7100.008 - TASK 00001 - S-80 OVER REEDY RIVER.GPJ SCDOT_DATATEMPLATE.GDT 12/4/24

SCDOT Soil Test Log

Project ID: P038771	County: Greenville	Boring No.: B-2/DHT
Site Description: S-23-80 over Reedy River	Route: S-23-80	
Eng./Geo.: M. Miller	Boring Location:	Offset:
Elev.: ft	Latitude:	Longitude:
Total Depth: 68.5 ft	Soil Depth: 38.5 ft	Core Depth: 30 ft
Bore Hole Diameter (in): 3"	Sampler Configuration	Liner Required: Y N
Drill Machine: CME 45B	Drill Method: Mud Rotary	Hammer Type: Automatic
Core Size: NQ	Driller: C. Taylor	Energy Ratio: 86.4%
	Groundwater: TOB	Not Measured
	24HR	



LEGEND

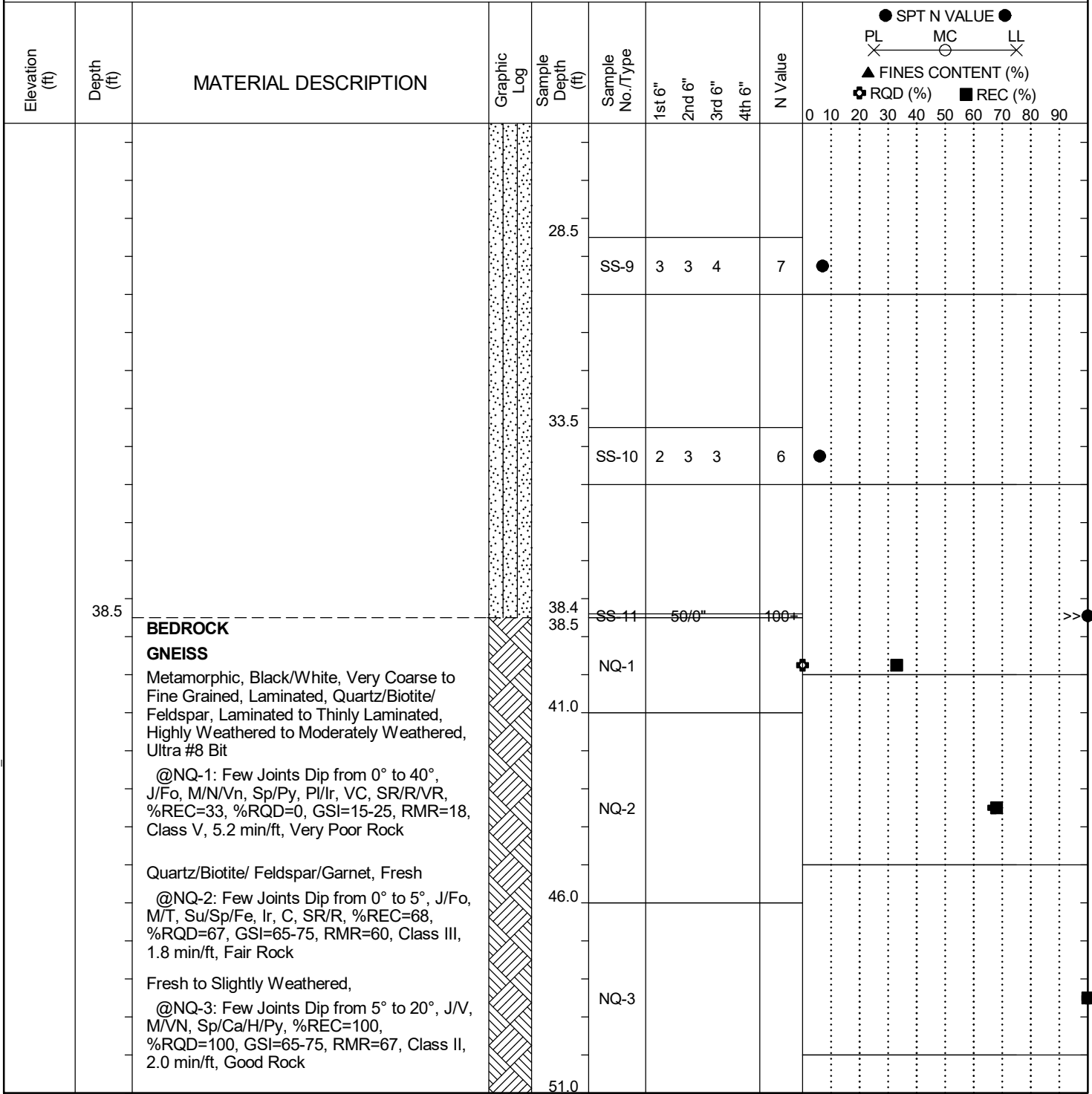
Continued Next Page

SAMPLER TYPE		DRILLING METHOD	
SS - Split Spoon	NQ - Rock Core, 1-7/8"	HSA - Hollow Stem Auger	RW - Rotary Wash
UD - Undisturbed Sample	CU - Cuttings	CFA - Continuous Flight Augers	RC - Rock Core
AWG - Rock Core, 1-1/8"	CT - Continuous Tube	DC - Driving Casing	

SC.DOT G7100.008 - TASK 00001 - S-80 OVER REEDY RIVER.GPJ SCDOT.DATATEMPLATE.GDT 12/4/24

SCDOT Soil Test Log

Project ID: P038771	County: Greenville	Boring No.: B-2/DHT
Site Description: S-23-80 over Reedy River	Route: S-23-80	
Eng./Geo.: M. Miller	Boring Location:	Offset:
Elev.: ft	Latitude:	Longitude:
Total Depth: 68.5 ft	Soil Depth: 38.5 ft	Core Depth: 30 ft
Date Started: 11/26/2024	Date Completed: 11/27/2024	
Bore Hole Diameter (in): 3"	Sampler Configuration	Liner Required: Y N
Liner Used: Y N	Drill Machine: CME 45B	Drill Method: Mud Rotary
Hammer Type: Automatic	Energy Ratio: 86.4%	
Core Size: NQ	Driller: C. Taylor	Groundwater: TOB Not Measured
		24HR



LEGEND

Continued Next Page

SAMPLER TYPE		DRILLING METHOD	
SS - Split Spoon	NQ - Rock Core, 1-7/8"	HSA - Hollow Stem Auger	RW - Rotary Wash
UD - Undisturbed Sample	CU - Cuttings	CFA - Continuous Flight Augers	RC - Rock Core
AWG - Rock Core, 1-1/8"	CT - Continuous Tube	DC - Driving Casing	

SC.DOT G7100.008 - TASK 00001 - S-80 OVER REEDY RIVER.GPJ SCDOT_DATATEMPLATE.GDT 12/4/24

