


SUBSURFACE TESTING DATA						
Boring ID	Test Type	<sup>1</sup> Northing	<sup>1</sup> Easting	<sup>1</sup> Latitude	<sup>1</sup> Longitude	Test Depth (ft)
B-1	STB	1201404.144	1529240.181	35.12526700	-82.57408900	73.5
B-2	STB	1201395.029	1529360.585	35.12524700	-82.57368600	20.0

<sup>1</sup> = Location coordinates were approximated based on known landmarks. Elevation information was not obtained. Location coordinates are intended for informational purposes only.



**LEGEND:**

 SOIL TEST BORING LOCATION

4			
3			
2			
1			
REV.	BY	DATE	DESCRIPTION OF REVISION
TOPO.		DATE	
DWG.	CTC	DATE 12.2.24	GROUP - -
R/W		DATE	

**F&ME** CONSULTANTS, INC.  
COLUMBIA, SC

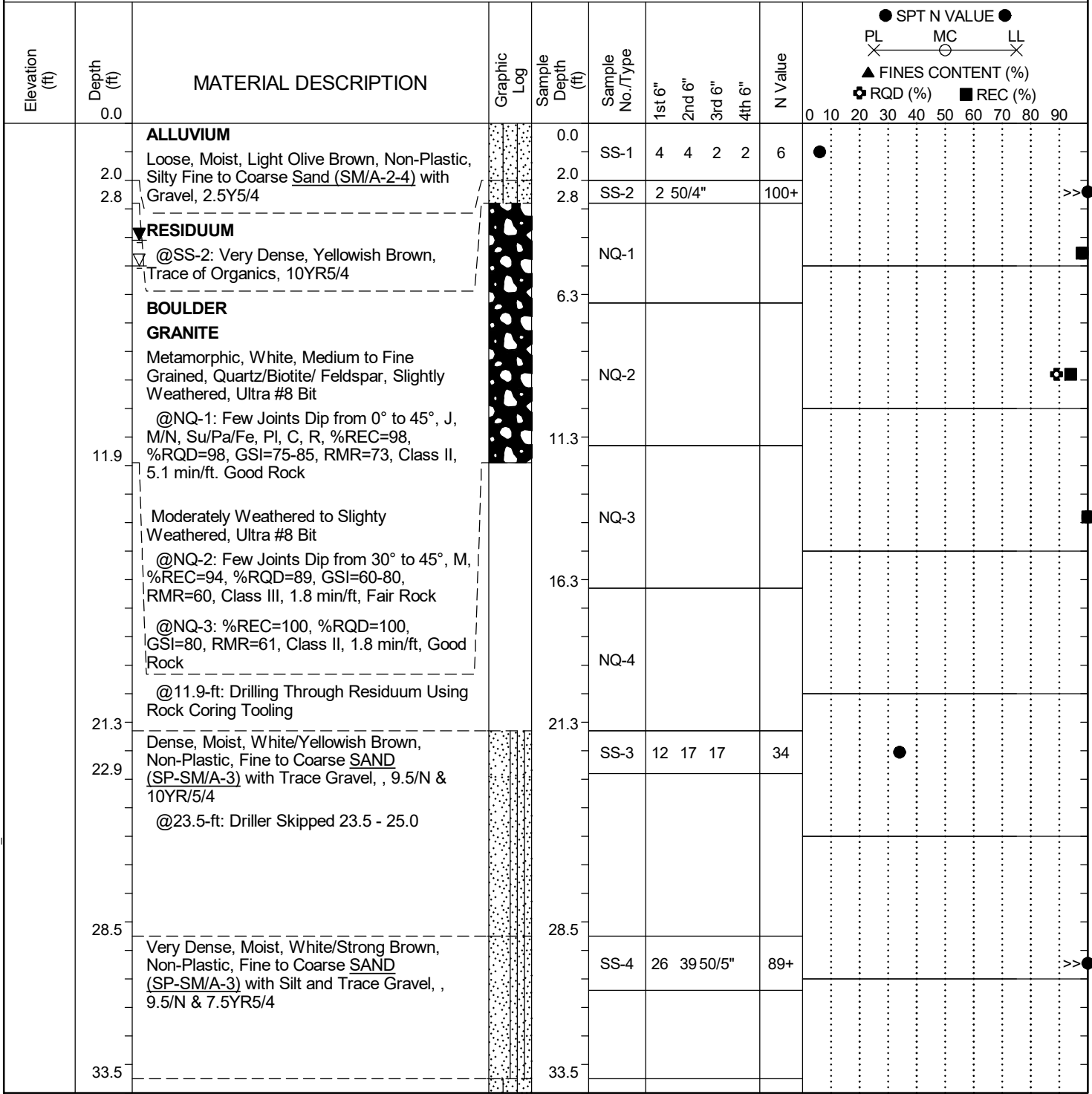
S-23-97 OVER MIDDLE SALUDA RIVER  
GREENVILLE COUNTY, SOUTH CAROLINA

BORING LOCATION PLAN

SCDOT PROJECT ID: N/A FME JOB NO. G7100.008 task 004  
SCALE: 1" = 60' FIGURE 2

# SCDOT Soil Test Log

<b>Project ID:</b> N/A	<b>County:</b> Greenville	<b>Boring No.:</b> B-1
<b>Site Description:</b> Jones Gap Bridge over Middle Saluda River		<b>Route:</b> S-23-97
<b>Eng./Geo.:</b> B. Vogel	<b>Boring Location:</b>	<b>Offset:</b>
<b>Elev.:</b> ft	<b>Latitude:</b>	<b>Longitude:</b>
<b>Total Depth:</b> 73.5 ft	<b>Soil Depth:</b> 44.4 ft	<b>Core Depth:</b> 29.1 ft
<b>Date Started:</b> 11/25/2024	<b>Date Completed:</b> 11/25/2024	
<b>Bore Hole Diameter (in):</b> 3	<b>Sampler Configuration</b>	<b>Liner Required:</b> Y N
<b>Liner Used:</b> Y N	<b>Drill Machine:</b> CME 45B	<b>Drill Method:</b> RW/RC
<b>Hammer Type:</b> Automatic	<b>Energy Ratio:</b> 86.4%	
<b>Core Size:</b> NQ	<b>Driller:</b> D. Harris	<b>Groundwater:</b> TOB 5 (Cave @ 7) 24HR 4.1 ft



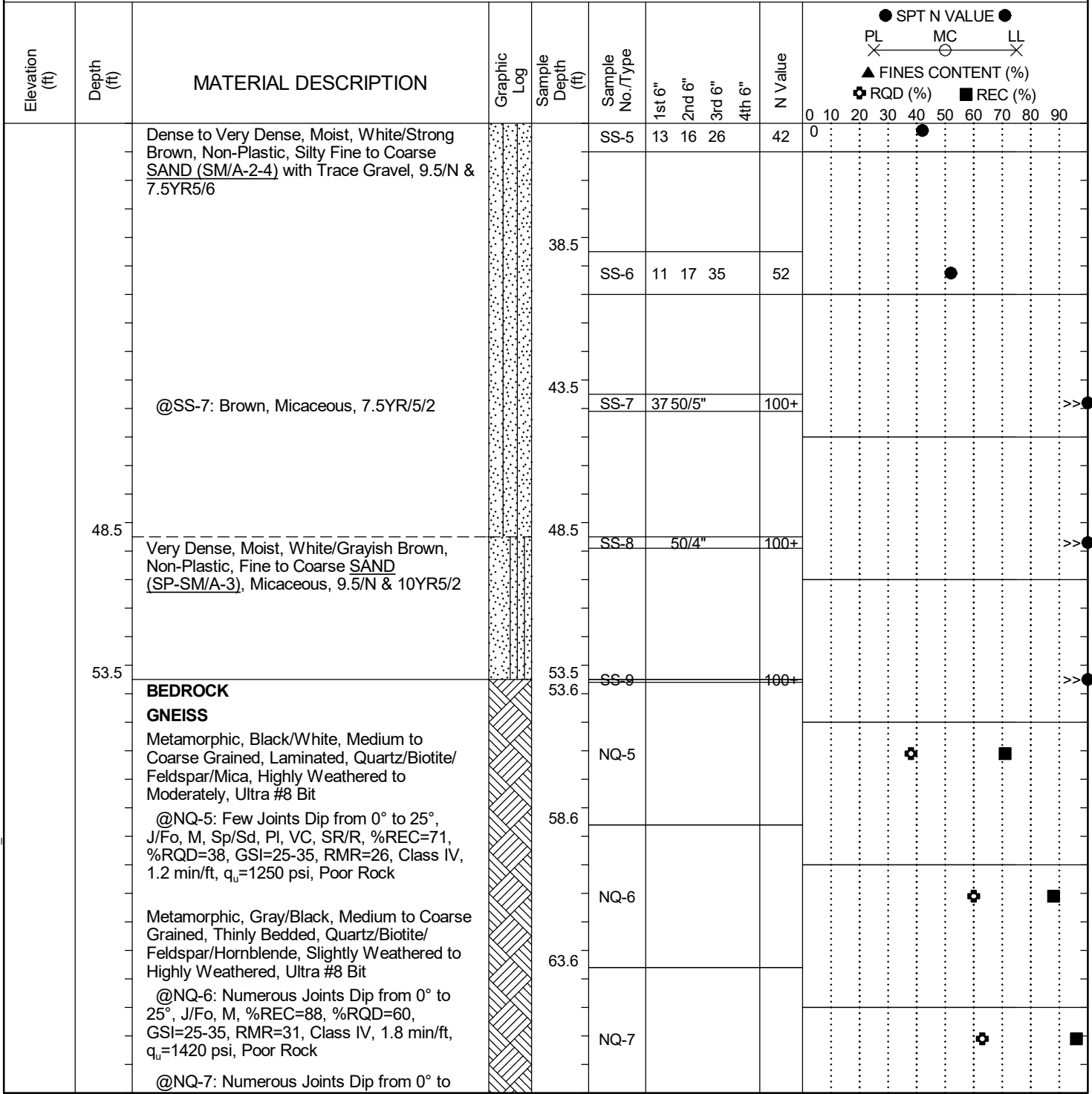
LEGEND Continued Next Page

<b>SAMPLER TYPE</b>		<b>DRILLING METHOD</b>	
SS - Split Spoon	NQ - Rock Core, 1-7/8"	HSA - Hollow Stem Auger	RW - Rotary Wash
UD - Undisturbed Sample	CU - Cuttings	CFA - Continuous Flight Augers	RC - Rock Core
AWG - Rock Core, 1-1/8"	CT - Continuous Tube	DC - Driving Casing	

SC.DOT G7100.008 - TASK 00004 - JONES GAP.GPJ SCDOT\_DATATEMPLATE.GDT 12/4/24

# SCDOT Soil Test Log

<b>Project ID:</b> N/A	<b>County:</b> Greenville	<b>Boring No.:</b> B-1
<b>Site Description:</b> Jones Gap Bridge over Middle Saluda River		<b>Route:</b> S-23-97
<b>Eng./Geo.:</b> B. Vogel	<b>Boring Location:</b>	<b>Offset:</b>
<b>Elev.:</b> ft	<b>Latitude:</b>	<b>Longitude:</b>
<b>Total Depth:</b> 73.5 ft	<b>Soil Depth:</b> 44.4 ft	<b>Core Depth:</b> 29.1 ft
<b>Bore Hole Diameter (in):</b> 3	<b>Sampler Configuration</b>	<b>Liner Required:</b> Y N
<b>Drill Machine:</b> CME 45B	<b>Drill Method:</b> RW/RC	<b>Energy Ratio:</b> 86.4%
<b>Core Size:</b> NQ	<b>Driller:</b> D. Harris	<b>Groundwater:</b> TOB 5 (Cave @ 7) 24HR 4.1 ft



**LEGEND**

*Continued Next Page*

SAMPLER TYPE		DRILLING METHOD	
SS - Split Spoon	NQ - Rock Core, 1-7/8"	HSA - Hollow Stem Auger	RW - Rotary Wash
UD - Undisturbed Sample	CU - Cuttings	CFA - Continuous Flight Augers	RC - Rock Core
AWG - Rock Core, 1-1/8"	CT - Continuous Tube	DC - Driving Casing	

SC.DOT G7100.008 - TASK 00004 - JONES GAP.GPJ SCDOT\_DATATEMPLATE.GDT 12/4/24



# SCDOT Soil Test Log

<b>Project ID:</b> N/A	<b>County:</b> Greenville	<b>Boring No.:</b> B-1
<b>Site Description:</b> Jones Gap Bridge over Middle Saluda River		<b>Route:</b> S-23-97
<b>Eng./Geo.:</b> B. Vogel	<b>Boring Location:</b>	<b>Offset:</b>
<b>Elev.:</b> ft	<b>Latitude:</b>	<b>Longitude:</b>
<b>Total Depth:</b> 73.5 ft	<b>Soil Depth:</b> 44.4 ft	<b>Core Depth:</b> 29.1 ft
<b>Bore Hole Diameter (in):</b> 3	<b>Sampler Configuration</b>	<b>Liner Required:</b> Y N
<b>Drill Machine:</b> CME 45B	<b>Drill Method:</b> RW/RC	<b>Hammer Type:</b> Automatic
<b>Core Size:</b> NQ	<b>Driller:</b> D. Harris	<b>Energy Ratio:</b> 86.4%
<b>Groundwater:</b> TOB		<b>5 (Cave @ 7' 24HR)</b> 4.1 ft

Elevation (ft)	Depth (ft)	MATERIAL DESCRIPTION	Graphic Log	Sample Depth (ft)	Sample No./Type	SPT N VALUE				FINES CONTENT (%)	
						1st 6"	2nd 6"	3rd 6"	4th 6"	RQD (%)	REC (%)
		35°, J/Fo, M/N, Sp/Su/Sd, %REC=96, %RQD=63, GSI=20-30, RMR=28, Class IV, 1.6 min/ft, Poor Rock		68.6							
	73.5	@NQ-8: Numerous Joints Dip from 0° to 76°, J, M, SuSpSd/Fel, %REC=42, %RQD=39, GSI=25-35, RMR=23, Class IV, 1.6 min/ft, Poor Rock			NQ-8						
		Boring Terminated @ 73.5-ft Below the Existing Ground Surface. Boring Achieved Target Depth.									

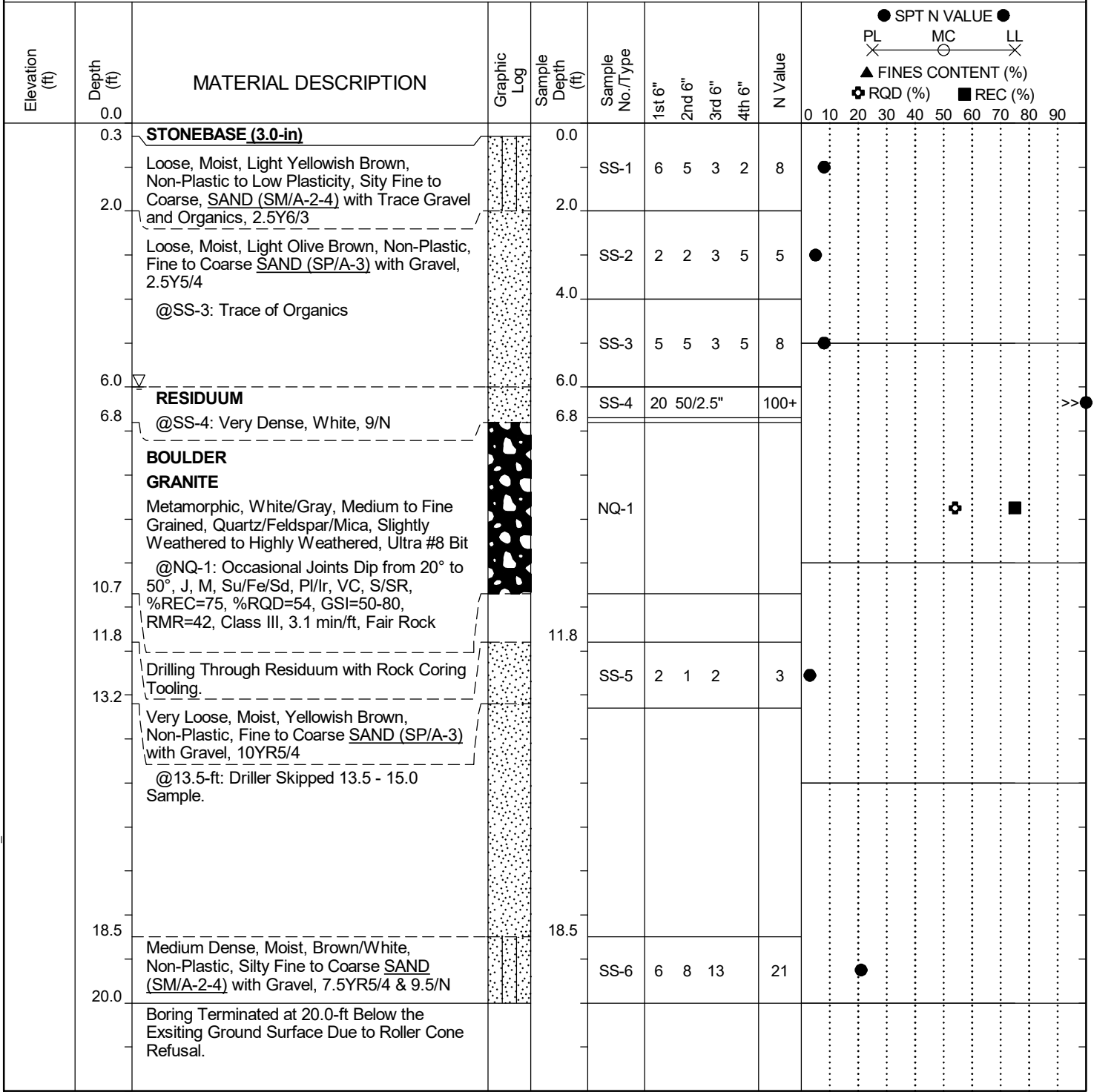
**LEGEND**

SAMPLER TYPE		DRILLING METHOD	
SS - Split Spoon	NQ - Rock Core, 1-7/8"	HSA - Hollow Stem Auger	RW - Rotary Wash
UD - Undisturbed Sample	CU - Cuttings	CFA - Continuous Flight Augers	RC - Rock Core
AWG - Rock Core, 1-1/8"	CT - Continuous Tube	DC - Driving Casing	

SC.DOT G7100.008 - TASK 00004 - JONES GAP.GPJ SCDOT\_DATATEMPLATE.GDT 12/4/24

# SCDOT Soil Test Log

<b>Project ID:</b> N/A	<b>County:</b> Greenville	<b>Boring No.:</b> B-2
<b>Site Description:</b> Jones Gap Bridge over Middle Saluda River		<b>Route:</b> S-23-97
<b>Eng./Geo.:</b> B. Vogel	<b>Boring Location:</b>	<b>Offset:</b>
<b>Elev.:</b> ft	<b>Latitude:</b>	<b>Longitude:</b>
<b>Total Depth:</b> 20 ft	<b>Soil Depth:</b> 15.2 ft	<b>Core Depth:</b> 4.8 ft
<b>Bore Hole Diameter (in):</b> 3	<b>Sampler Configuration</b>	<b>Liner Required:</b> Y N
<b>Drill Machine:</b> CME 45B	<b>Drill Method:</b> RW/RC	<b>Energy Ratio:</b> 86.4%
<b>Core Size:</b> NQ	<b>Driller:</b> D. Harris	<b>Groundwater:</b> TOB 6 ft
		<b>24HR:</b> Not Measure



### LEGEND

SAMPLER TYPE		DRILLING METHOD	
SS - Split Spoon	NQ - Rock Core, 1-7/8"	HSA - Hollow Stem Auger	RW - Rotary Wash
UD - Undisturbed Sample	CU - Cuttings	CFA - Continuous Flight Augers	RC - Rock Core
AWG - Rock Core, 1-1/8"	CT - Continuous Tube	DC - Driving Casing	

SC.DOT G7100.008 - TASK 00004 - JONES GAP.GPJ SCDOT\_DATATEMPLATE.GDT 12/4/24