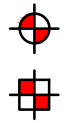


| SUBSURFACE TESTING DATA | | | | | | | |
|-------------------------|------------------------|-------------|-------------|-------------|--------------|----------------------|-----------------|
| Boring ID | Test Type | Northing | Easting | Latitude | Longitude | Test Elevation (MSL) | Test Depth (ft) |
| B-1/DH-1 | STB / Downhole Seismic | 1184942.258 | 1643638.031 | 35.08425286 | -82.19097965 | 909.5 | 44.0 |
| B-2 | STB | 1184982.892 | 1643582.019 | 35.08436271 | -82.19116839 | 909.1 | 31.0 |
| BS-1 | Bulk Sample | 1184944.484 | 1643640.560 | 35.08425906 | -82.19097128 | 909.0 | 0-5 |
| BS-2 | Bulk Sample | 1184981.857 | 1643580.961 | 35.08435983 | -82.19117188 | 908.5 | 0-5 |
| CPT-1 | CPT | 1184930.218 | 1643621.440 | 35.08421926 | -82.19103463 | 909.4 | 5.4 |
| CPT-1A | CPT | 1184932.653 | 1643619.575 | 35.08422589 | -82.19104095 | 909.4 | 4.6 |
| CPT-1B | CPT | 1184938.393 | 1643615.288 | 35.08424152 | -82.19105550 | 909.4 | 11.7 |
| CPT-2 | CPT | 1184994.847 | 1643597.995 | 35.08439605 | -82.19111546 | 909.0 | 11.2 |
| P-1 ¹ | STB | 1184585.408 | 1643885.709 | 35.08328046 | -82.19013823 | 934.8 | 3.1 |
| P-2 ¹ | STB | 1184712.449 | 1643808.007 | 35.08362697 | -82.19040278 | 925.5 | 3.1 |
| P-3 ¹ | STB | 1184823.527 | 1643706.286 | 35.08392888 | -82.19074698 | 915.9 | 3.0 |
| P-4 ¹ | STB | 1185102.571 | 1643512.259 | 35.08468925 | -82.19140612 | 910.0 | 2.1 |
| P-5 ¹ | STB | 1185213.905 | 1643411.917 | 35.08499189 | -82.19174573 | 915.1 | 3.0 |
| P-6 ¹ | STB | 1185340.601 | 1643331.576 | 35.08533737 | -82.19201910 | 922.1 | 3.1 |

1 = Bulk Soil Sample BS-3 was a composite sample created from the upper 2-ft. of auger cuttings from the specified boreholes



LEGEND:



SOIL TEST BORING LOCATION



CONE PENETRATION TEST LOCATION

BULK SAMPLE TEST LOCATION

| | | | | |
|-------|-----|--------------|-------------------------|--|
| 4 | | | | |
| 3 | | | | |
| 2 | | | | |
| 1 | | | | |
| REV. | BY | DATE | DESCRIPTION OF REVISION | |
| TOPO. | | DATE | | |
| DWG. | CTC | DATE 12.2.24 | GROUP | |
| R/W | | DATE | | |

F&ME CONSULTANTS, INC.
COLUMBIA, SC

S-42-52 OVER MOTLOW CREEK
SPARTANBURG COUNTY, SOUTH CAROLINA

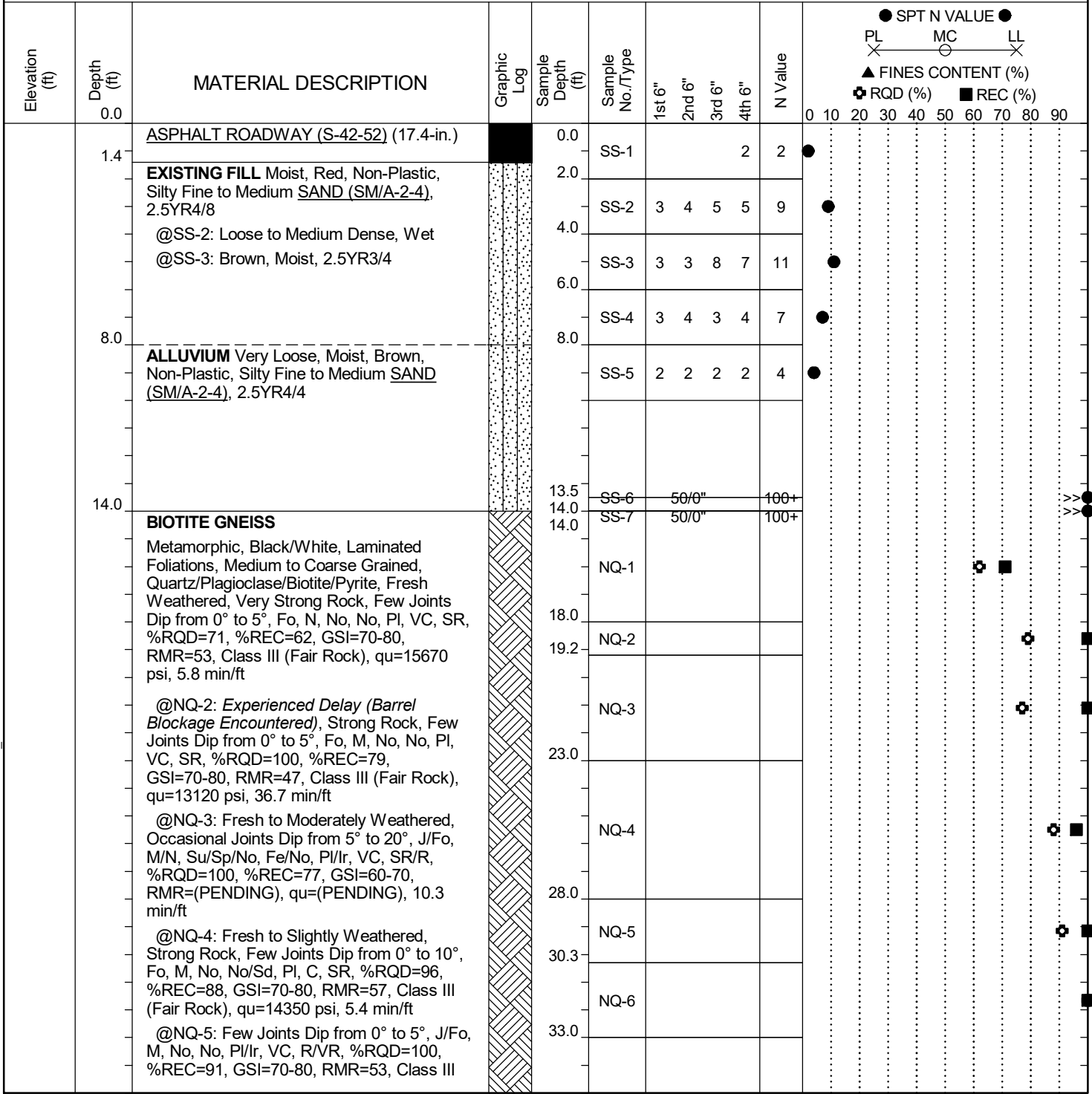
BORING LOCATION PLAN

SCDOT PROJECT ID: P044049 FME JOB NO. G7100.008 task 003

SCALE: 1" = 100' FIGURE 2

SCDOT Soil Test Log

| | | |
|---|------------------------------|-------------------------------|
| Project ID: P044049 | County: Spartanburg | Boring No.: B-1/DH-1 |
| Site Description: S-52 over Motlow Creek | Route: S-42-52 | |
| Eng./Geo.: M. Miller | Boring Location: | Offset: |
| Elev.: ft | Latitude: | Longitude: |
| Total Depth: 44 ft | Soil Depth: 14 ft | Core Depth: 30 ft |
| Bore Hole Diameter (in): 6 | Sampler Configuration | Liner Required: Y (N) |
| Drill Machine: CME550X | Drill Method: RW/RC | Hammer Type: Automatic |
| Core Size: NQ | Driller: C. Taylor | Groundwater: TOB N/A |
| | | Energy Ratio: 76.1% |
| | | 24HR: N/A |



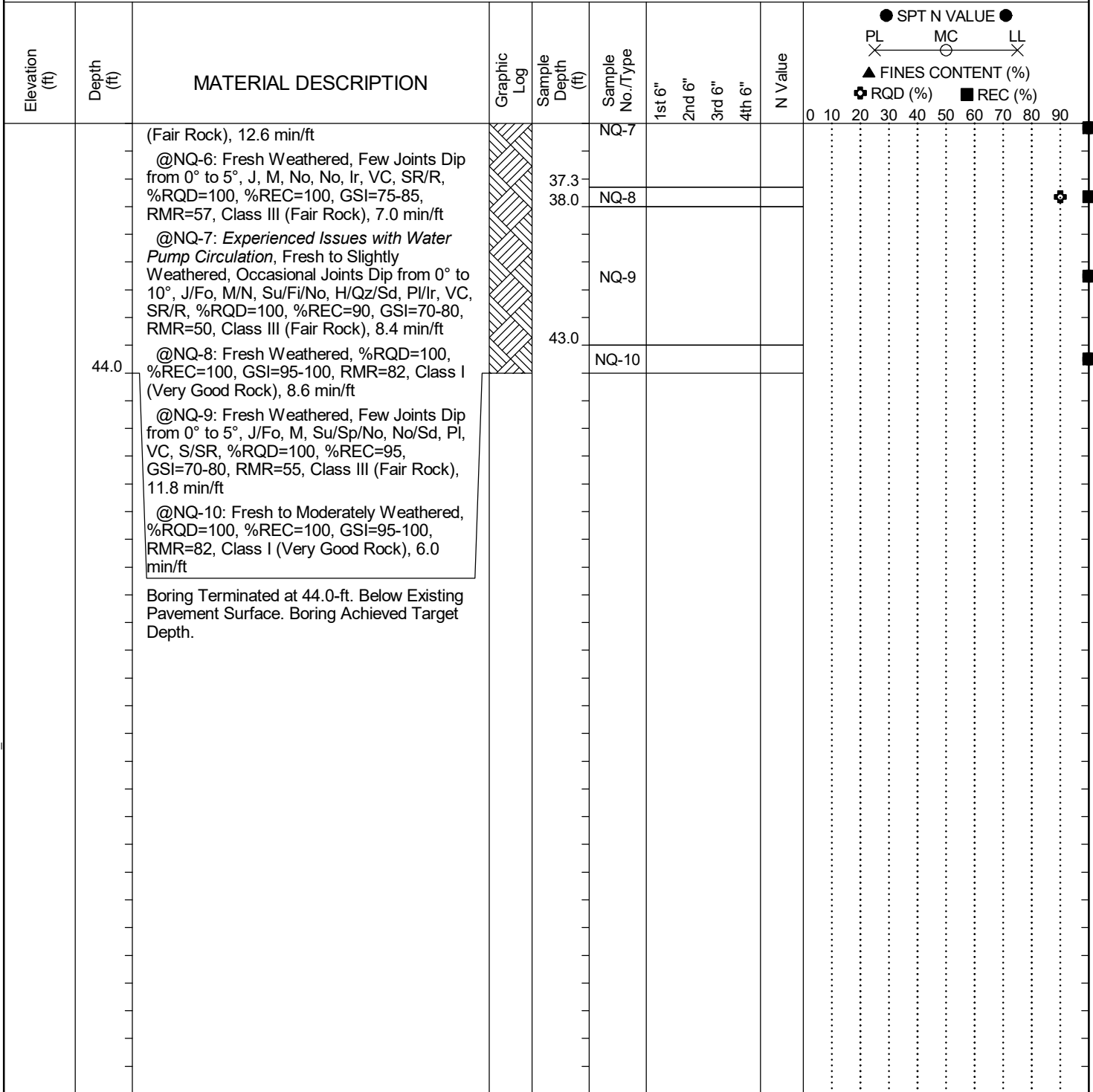
LEGEND Continued Next Page

| SAMPLER TYPE | | DRILLING METHOD | |
|-------------------------|------------------------|--------------------------------|------------------|
| SS - Split Spoon | NQ - Rock Core, 1-7/8" | HSA - Hollow Stem Auger | RW - Rotary Wash |
| UD - Undisturbed Sample | CU - Cuttings | CFA - Continuous Flight Augers | RC - Rock Core |
| AWG - Rock Core, 1-1/8" | CT - Continuous Tube | DC - Driving Casing | |

SC.DOT G7100.008 - TASK 00030 - S-52 OVER MOTLOW CREEK.GPJ SCDOT_DATATEMPLATE.GDT 12/4/24

SCDOT Soil Test Log

| | | | | | |
|---|--|------------------------------|-----------------------|-----------------------------------|--|
| Project ID: P044049 | | County: Spartanburg | | Boring No.: B-1/DH-1 | |
| Site Description: S-52 over Motlow Creek | | | Route: S-42-52 | | |
| Eng./Geo.: M. Miller | | Boring Location: | | Offset: | |
| Elev.: ft | | Latitude: | | Date Started: 11/11/2024 | |
| Total Depth: 44 ft | | Soil Depth: 14 ft | | Date Completed: 11/12/2024 | |
| Bore Hole Diameter (in): 6 | | Sampler Configuration | | Liner Required: Y (N) | |
| Drill Machine: CME550X | | Drill Method: RW/RC | | Energy Ratio: 76.1% | |
| Core Size: NQ | | Driller: C. Taylor | | Groundwater: TOB N/A | |
| | | | | 24HR: N/A | |



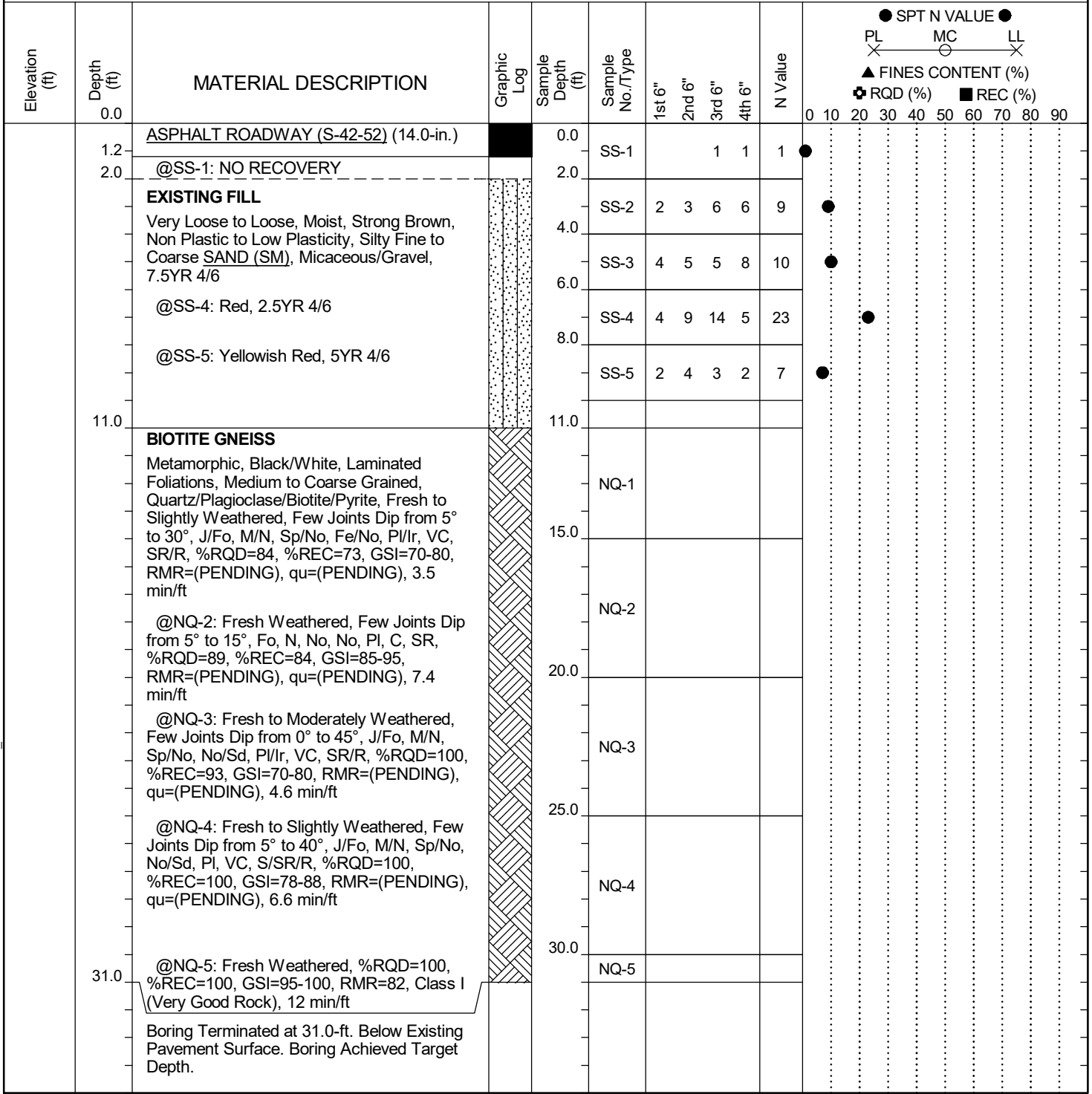
LEGEND

| SAMPLER TYPE | | DRILLING METHOD | |
|-------------------------|------------------------|--------------------------------|------------------|
| SS - Split Spoon | NQ - Rock Core, 1-7/8" | HSA - Hollow Stem Auger | RW - Rotary Wash |
| UD - Undisturbed Sample | CU - Cuttings | CFA - Continuous Flight Augers | RC - Rock Core |
| AWG - Rock Core, 1-1/8" | CT - Continuous Tube | DC - Driving Casing | |

SC.DOT G7100.008 - TASK 00030 - S-52 OVER MOTLOW CREEK.GPJ SCDOT_DATATEMPLATE.GDT 12/4/24

SCDOT Soil Test Log

| | | |
|---|------------------------------|-------------------------------|
| Project ID: P044049 | County: Spartanburg | Boring No.: B-2 |
| Site Description: S-52 over Motlow Creek | | Route: S-42-52 |
| Eng./Geo.: G. Cantele | Boring Location: | Offset: |
| Elev.: ft | Latitude: | Longitude: |
| Total Depth: 31 ft | Soil Depth: 11 ft | Core Depth: 20 ft |
| Bore Hole Diameter (in): 6 | Sampler Configuration | Liner Required: Y (N) |
| Drill Machine: CME550X | Drill Method: RW/RC | Hammer Type: Automatic |
| Core Size: NQ | Driller: C. Taylor | Groundwater: TOB N/A |
| | | Liner Used: Y (N) |
| | | Energy Ratio: 76.1% |
| | | 24HR: N/A |



LEGEND

| SAMPLER TYPE | | DRILLING METHOD | |
|-------------------------|------------------------|--------------------------------|------------------|
| SS - Split Spoon | NQ - Rock Core, 1-7/8" | HSA - Hollow Stem Auger | RW - Rotary Wash |
| UD - Undisturbed Sample | CU - Cuttings | CFA - Continuous Flight Augers | RC - Rock Core |
| AWG - Rock Core, 1-1/8" | CT - Continuous Tube | DC - Driving Casing | |

SC.DOT G7100.008 - TASK 00030 - S-52 OVER MOTLOW CREEK.GPJ SCDOT_DATATEMPLATE.GDT 12/4/24