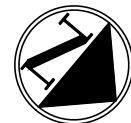
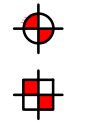


SUBSURFACE TESTING DATA							
Boring ID	Test Type	Northing	Easting	Latitude	Longitude	Test Elevation (MSL)	Test Depth (ft)
B-1/DH-1	STB / Downhole Seismic	1106056.825	1574065.679	34.86513542	-82.41984522	934.4	57.0
B-2	STB	1106177.973	1573934.253	34.86546327	-82.42028882	934.4	46.0
B-2A	STB	1106174.817	1573937.512	34.86545473	-82.42027781	934.4	50.0
BS-1	Bulk Sample	1106058.317	1574066.973	34.86513957	-82.41984098	933.9	0-5
BS-2	Bulk Sample	1106176.304	1573932.753	34.86545863	-82.42029375	933.9	0-5
CPT-1	CPT	1106044.798	1574049.564	34.86510177	-82.41989838	934.5	
CPT-2	CPT	1106190.620	1573947.159	34.86549851	-82.42024639	934.4	
P-1 ¹	STB	1105819.040	1574229.720	34.86448837	-82.41928758	953.8	2.8
P-2 ¹	STB	1105904.856	1574180.343	34.86472226	-82.41945608	943.5	3.0
P-3 ¹	STB	1105976.248	1574110.488	34.86491575	-82.41969218	936.7	2.9
P-4 ¹	STB	1106247.538	1573863.609	34.86565172	-82.42052747	934.4	2.1
P-5 ¹	STB	1106359.465	1573763.896	34.86595543	-82.42086495	935.9	2.2
P-6 ¹	STB	1106441.929	1573636.567	34.86617717	-82.42129313	937.2	2.2
W-1	STB	1106258.035	1573874.238	34.86568095	-82.42049253	934.3	
W-2	STB	1106327.789	1573802.623	34.86586988	-82.42073442	935.0	

1 = Bulk Soil Sample BS-3 was a composite sample created from the upper 2-ft. of auger cuttings from the specified boreholes



LEGEND:



SOIL TEST BORING LOCATION



BULK SAMPLE TEST LOCATION



CONE PENETRATION TEST LOCATION

4				
3				
2				
1				
REV.	BY	DATE	DESCRIPTION OF REVISION	
TOPO.		DATE		
DWG.	CTC	DATE 12.2.24	GROUP	
R/W		DATE		



F&ME CONSULTANTS, INC.
COLUMBIA, SC

S-23-147 OVER REEDY RIVER
GREENVILLE COUNTY, SOUTH CAROLINA

BORING LOCATION PLAN

SCDOT PROJECT ID: P044048

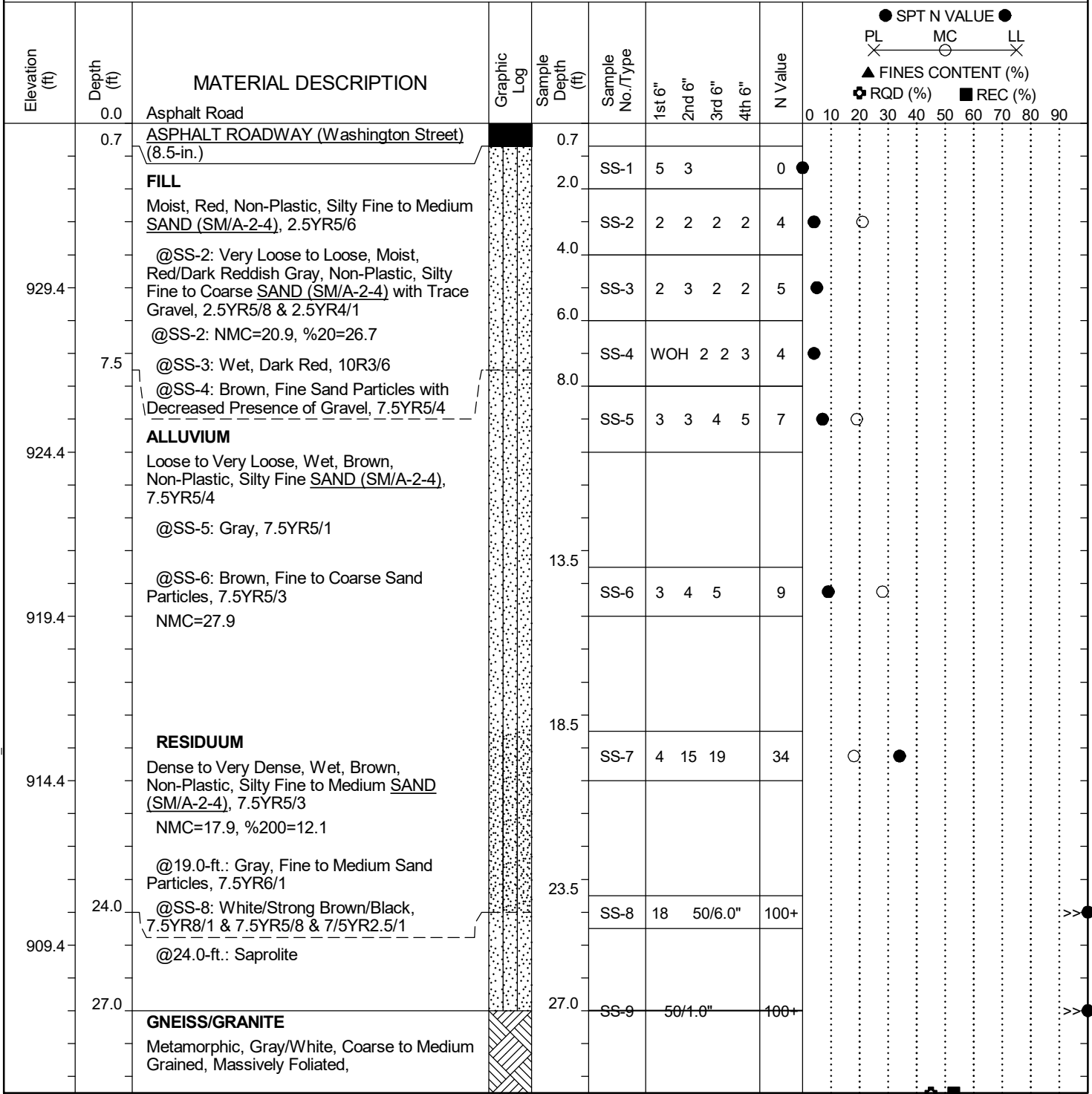
FME JOB NO. G7100.008 task 002

SCALE: 1" = 60'

FIGURE 2

SCDOT Soil Test Log

Project ID: P044048	County: Greenville	Boring No.: B-1/DH-1
Site Description: S-23-147 over Reedy River		Route: S-23-147
Eng./Geo.: M. Miller	Boring Location:	Offset:
Elev.: 934.4 ft	Latitude: 34.86513542	Longitude: -82.41984522
Total Depth: 57 ft	Soil Depth: 27 ft	Core Depth: 30 ft
Date Started: 11/18/2024	Date Completed: 11/18/2024	
Bore Hole Diameter (in): 3.8	Sampler Configuration	Liner Required: Y (N)
Liner Used: Y (N)	Drill Machine: CME 45B	Drill Method: RW/RC
Hammer Type: Automatic	Energy Ratio: 86.4%	Core Size: NQ
Driller: C. Taylor	Groundwater: TOB NR	24HR: NR



LEGEND

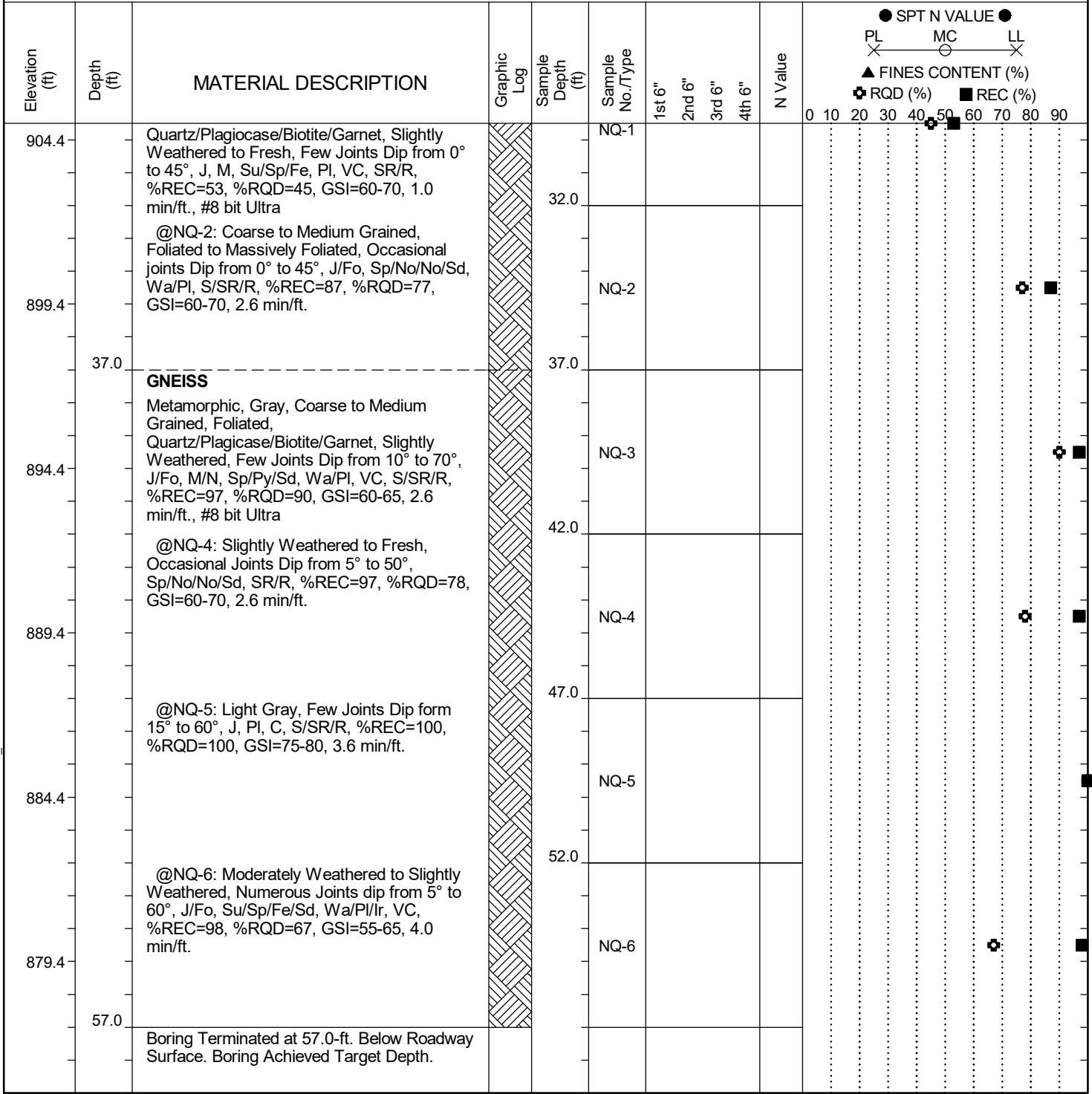
Continued Next Page

SAMPLER TYPE		DRILLING METHOD	
SS - Split Spoon	NQ - Rock Core, 1-7/8"	HSA - Hollow Stem Auger	RW - Rotary Wash
UD - Undisturbed Sample	CU - Cuttings	CFA - Continuous Flight Augers	RC - Rock Core
AWG - Rock Core, 1-1/8"	CT - Continuous Tube	DC - Driving Casing	

SC.DOT G7100.008 - TASK 00002 - S-147 OVER REEDY CREEK.GPJ SCDOT DATATEMPLATE.GDT 12/4/24

SCDOT Soil Test Log

Project ID: P044048	County: Greenville	Boring No.: B-1/DH-1
Site Description: S-23-147 over Reedy River	Route: S-23-147	
Eng./Geo.: M. Miller	Boring Location:	Offset:
Elev.: 934.4 ft	Latitude: 34.86513542	Longitude: -82.41984522
Total Depth: 57 ft	Soil Depth: 27 ft	Core Depth: 30 ft
Date Started: 11/18/2024	Date Completed: 11/18/2024	
Bore Hole Diameter (in): 3.8	Sampler Configuration	Liner Required: Y (N)
Liner Used: Y (N)	Drill Machine: CME 45B	Drill Method: RW/RC
Hammer Type: Automatic	Energy Ratio: 86.4%	
Core Size: NQ	Driller: C. Taylor	Groundwater: TOB NR
		24HR: NR



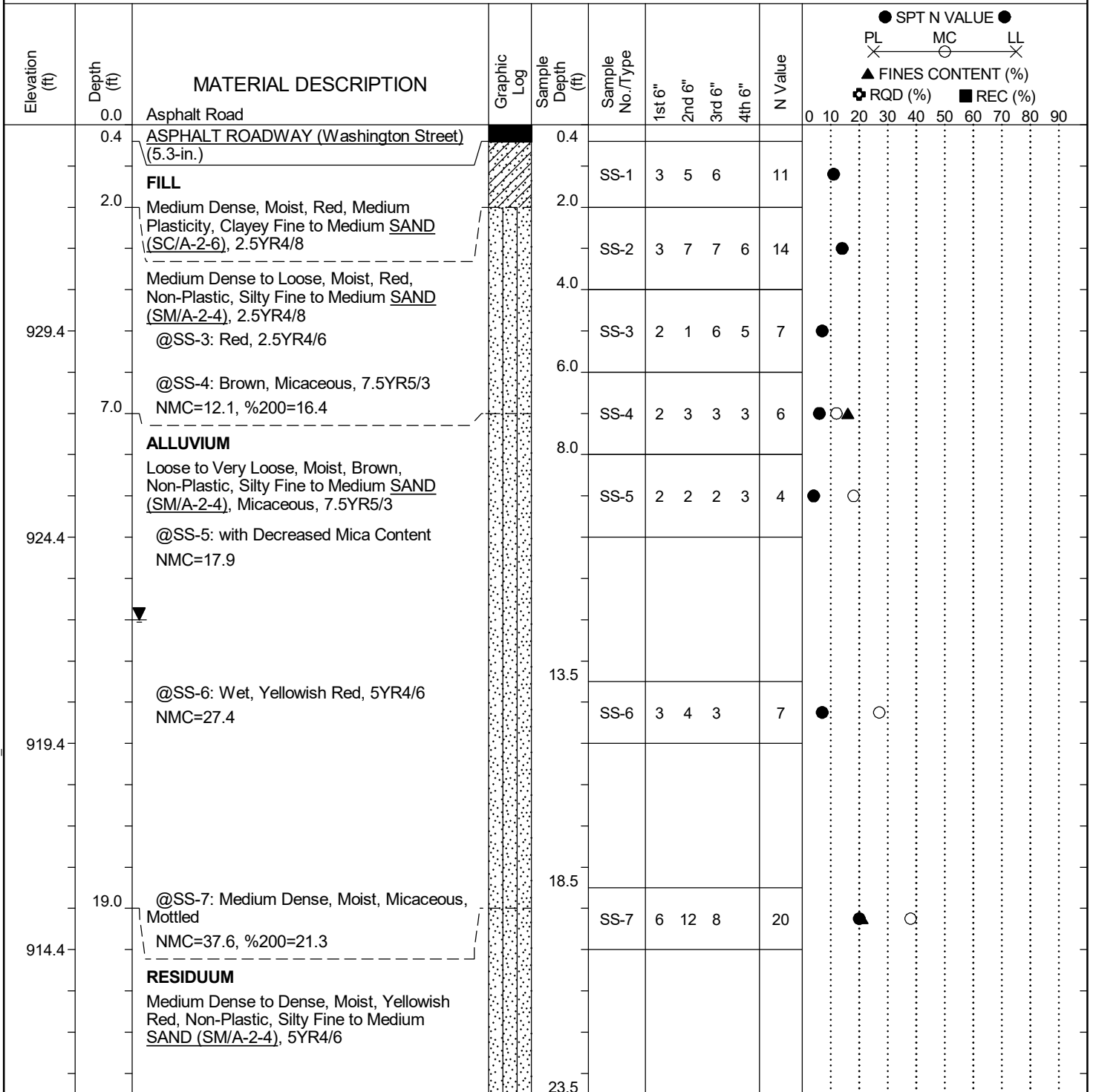
LEGEND

SAMPLER TYPE		DRILLING METHOD	
SS - Split Spoon	NQ - Rock Core, 1-7/8"	HSA - Hollow Stem Auger	RW - Rotary Wash
UD - Undisturbed Sample	CU - Cuttings	CFA - Continuous Flight Augers	RC - Rock Core
AWG - Rock Core, 1-1/8"	CT - Continuous Tube	DC - Driving Casing	

SC.DOT G7100.008 - TASK 00002 - S-147 OVER REEDY CREEK.GPJ SCDOT DATATEMPLATE.GDT 12/4/24

SCDOT Soil Test Log

Project ID: P044048	County: Greenville	Boring No.: B-2
Site Description: S-23-147 over Reedy River	Route: S-23-147	
Eng./Geo.: M. Miller	Boring Location:	Offset:
Elev.: 934.4 ft	Latitude: 34.86546327	Longitude: -82.42028882
Total Depth: 46 ft	Soil Depth: 32 ft	Core Depth: 14 ft
Bore Hole Diameter (in): 3.8	Sampler Configuration	Liner Required: Y (N)
Drill Machine: CME 45B	Drill Method: RW/RC	Hammer Type: Automatic
Core Size: NQ	Driller: C. Taylor	Groundwater: TOB NE
		Energy Ratio: 86.4%
		24HR 12(cave@12.5)



LEGEND

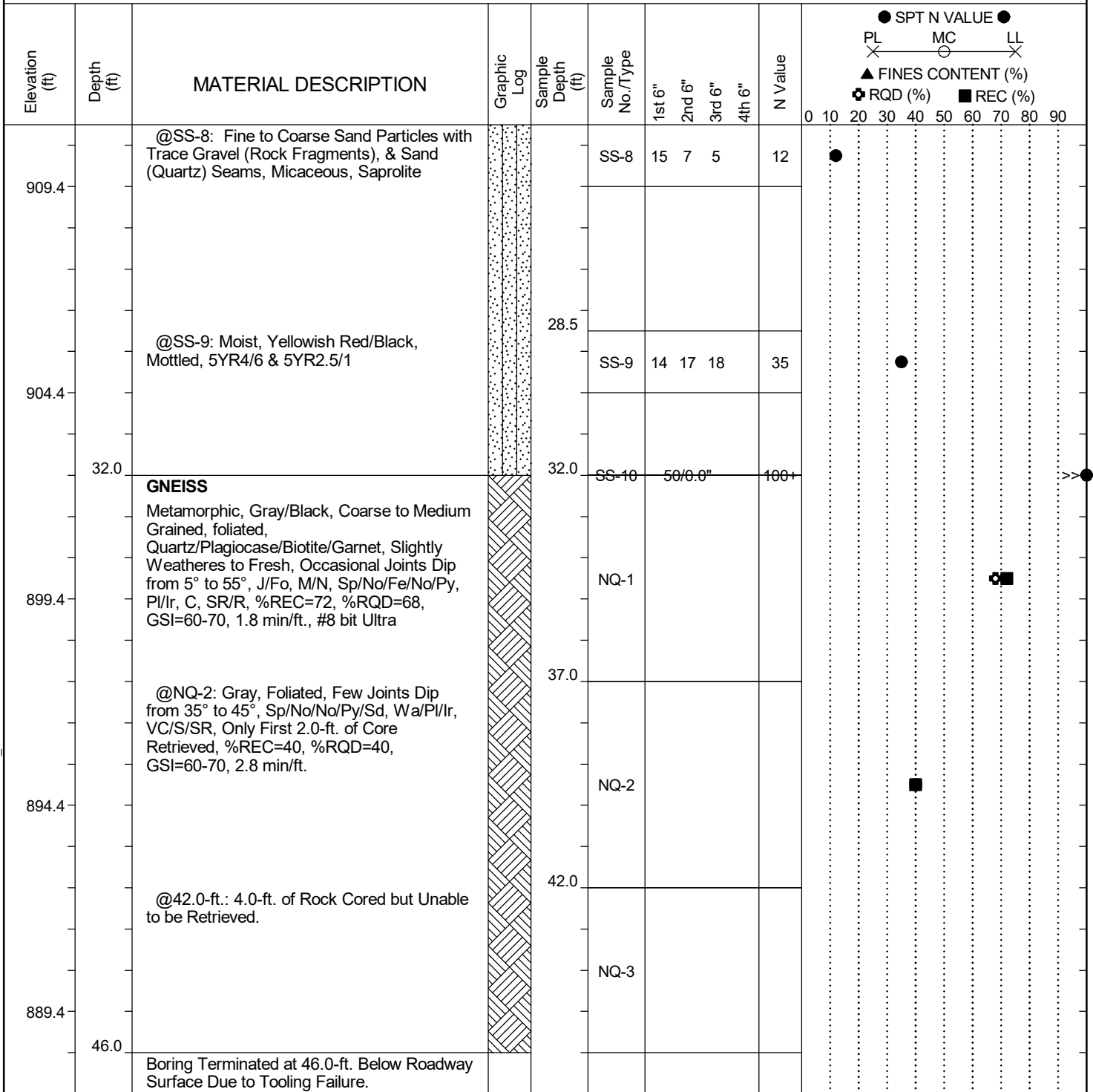
Continued Next Page

SC.DOT G7100.008 - TASK 00002 - S-147 OVER REEDY CREEK.GPJ SCDOT DATATEMPLATE.GDT 12/4/24

SAMPLER TYPE		DRILLING METHOD	
SS - Split Spoon	NQ - Rock Core, 1-7/8"	HSA - Hollow Stem Auger	RW - Rotary Wash
UD - Undisturbed Sample	CU - Cuttings	CFA - Continuous Flight Augers	RC - Rock Core
AWG - Rock Core, 1-1/8"	CT - Continuous Tube	DC - Driving Casing	

SCDOT Soil Test Log

Project ID: P044048	County: Greenville	Boring No.: B-2
Site Description: S-23-147 over Reedy River		Route: S-23-147
Eng./Geo.: M. Miller	Boring Location:	Offset:
Elev.: 934.4 ft	Latitude: 34.86546327	Longitude: -82.42028882
Total Depth: 46 ft	Soil Depth: 32 ft	Core Depth: 14 ft
Date Started: 11/19/2024	Date Completed: 11/19/2024	
Bore Hole Diameter (in): 3.8	Sampler Configuration	Liner Required: Y (N)
Liner Used: Y (N)	Drill Machine: CME 45B	Drill Method: RW/RC
Hammer Type: Automatic	Energy Ratio: 86.4%	Core Size: NQ
Driller: C. Taylor	Groundwater: TOB NE	24HR: 12(cave@12.5)



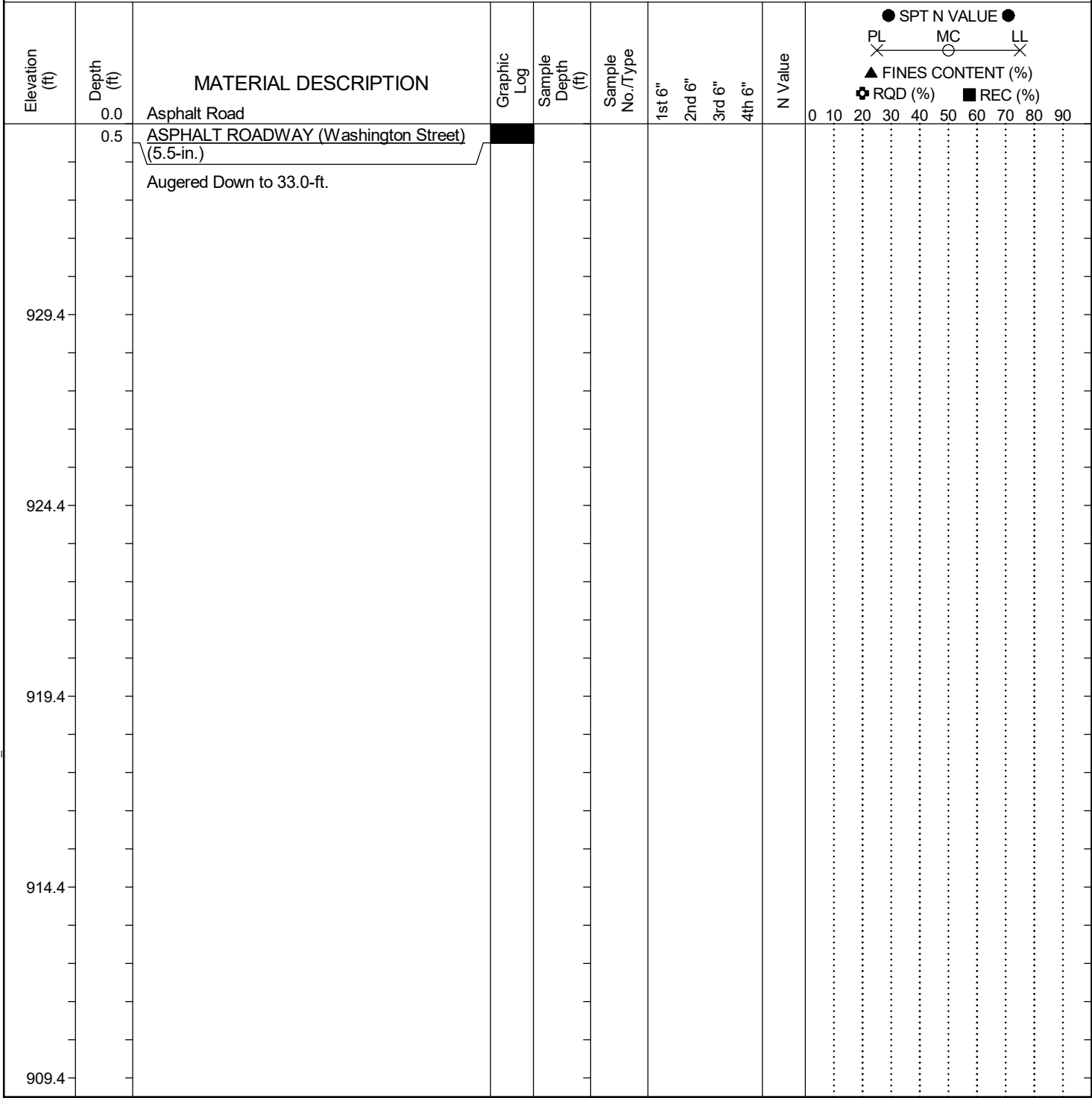
LEGEND

SAMPLER TYPE		DRILLING METHOD	
SS - Split Spoon	NQ - Rock Core, 1-7/8"	HSA - Hollow Stem Auger	RW - Rotary Wash
UD - Undisturbed Sample	CU - Cuttings	CFA - Continuous Flight Augers	RC - Rock Core
AWG - Rock Core, 1-1/8"	CT - Continuous Tube	DC - Driving Casing	

SC.DOT G7100.008 - TASK 00002 - S-147 OVER REEDY CREEK.GPJ SCDOT DATATEMPLATE.GDT 12/4/24

SCDOT Soil Test Log

Project ID: P044048	County: Greenville	Boring No.: B-2A
Site Description: S-23-147 over Reedy River	Route: S-23-147	
Eng./Geo.: M. Miller	Boring Location:	Offset:
Elev.: 934.4 ft	Latitude: 34.86545473	Longitude: -82.42027781
Total Depth: 50 ft	Soil Depth: 33 ft	Core Depth: 17 ft
Bore Hole Diameter (in): 3.8	Sampler Configuration	Liner Required: Y (N)
Drill Machine: CME 45B	Drill Method: HSA/RC	Hammer Type: Automatic
Core Size: NQ	Driller: C. Taylor	Groundwater: TOB NR
		Energy Ratio: 86.4%
		24HR: NR



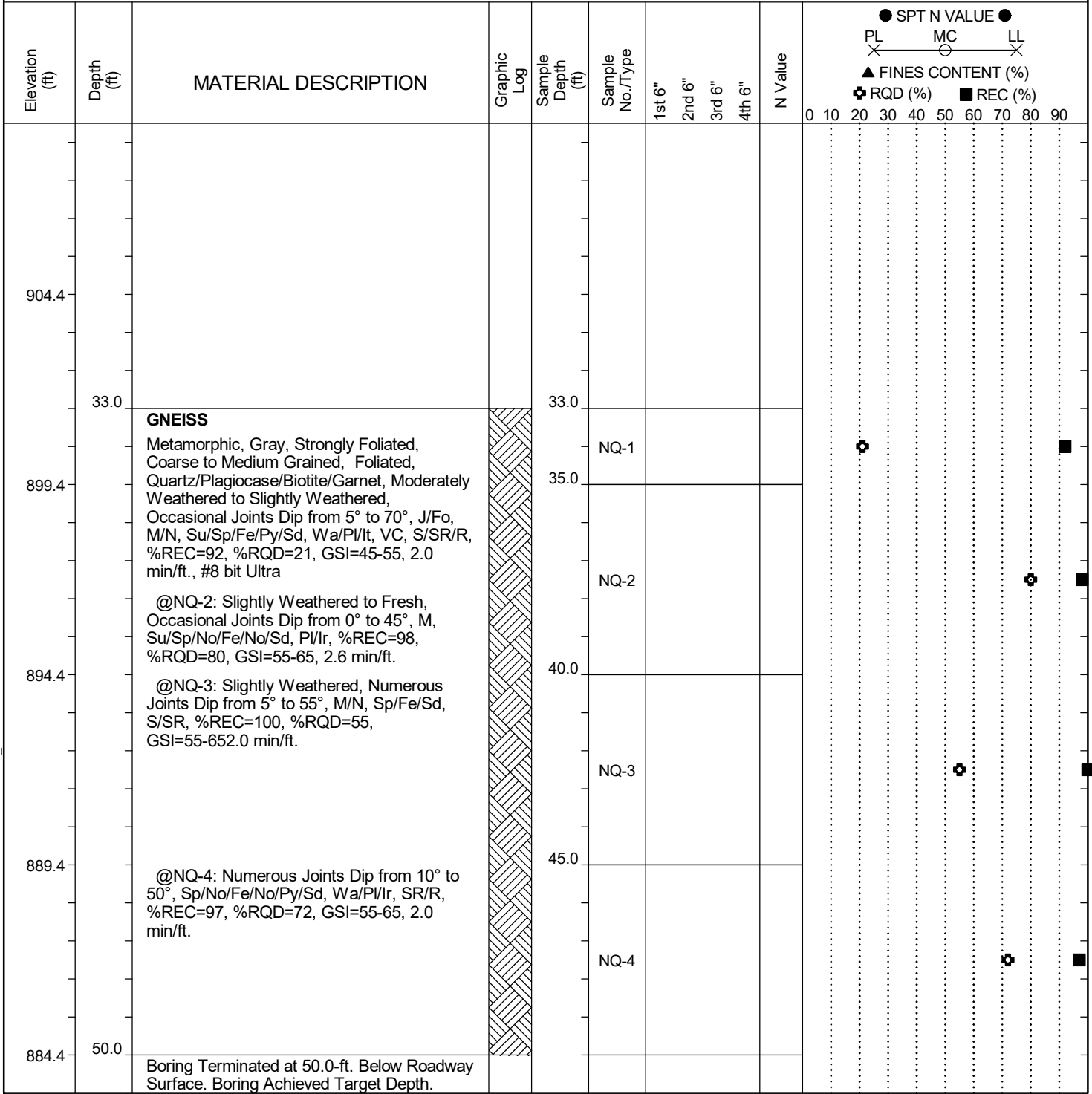
LEGEND *Continued Next Page*

SAMPLER TYPE		DRILLING METHOD	
SS - Split Spoon	NQ - Rock Core, 1-7/8"	HSA - Hollow Stem Auger	RW - Rotary Wash
UD - Undisturbed Sample	CU - Cuttings	CFA - Continuous Flight Augers	RC - Rock Core
AWG - Rock Core, 1-1/8"	CT - Continuous Tube	DC - Driving Casing	

SC.DOT G7100.008 - TASK 00002 - S-147 OVER REEDY CREEK.GPJ SCDOT_DATATEMPLATE.GDT 12/4/24

SCDOT Soil Test Log

Project ID: P044048	County: Greenville	Boring No.: B-2A
Site Description: S-23-147 over Reedy River		Route: S-23-147
Eng./Geo.: M. Miller	Boring Location:	Offset:
Elev.: 934.4 ft	Latitude: 34.86545473	Longitude: -82.42027781
Date Started: 11/20/2024	Date Completed: 11/20/2024	Alignment:
Total Depth: 50 ft	Soil Depth: 33 ft	Core Depth: 17 ft
Bore Hole Diameter (in): 3.8	Sampler Configuration	Liner Required: Y (N)
Liner Used: Y (N)	Drill Machine: CME 45B	Drill Method: HSA/RC
Hammer Type: Automatic	Energy Ratio: 86.4%	Groundwater: TOB NR
Core Size: NQ	Driller: C. Taylor	24HR: NR



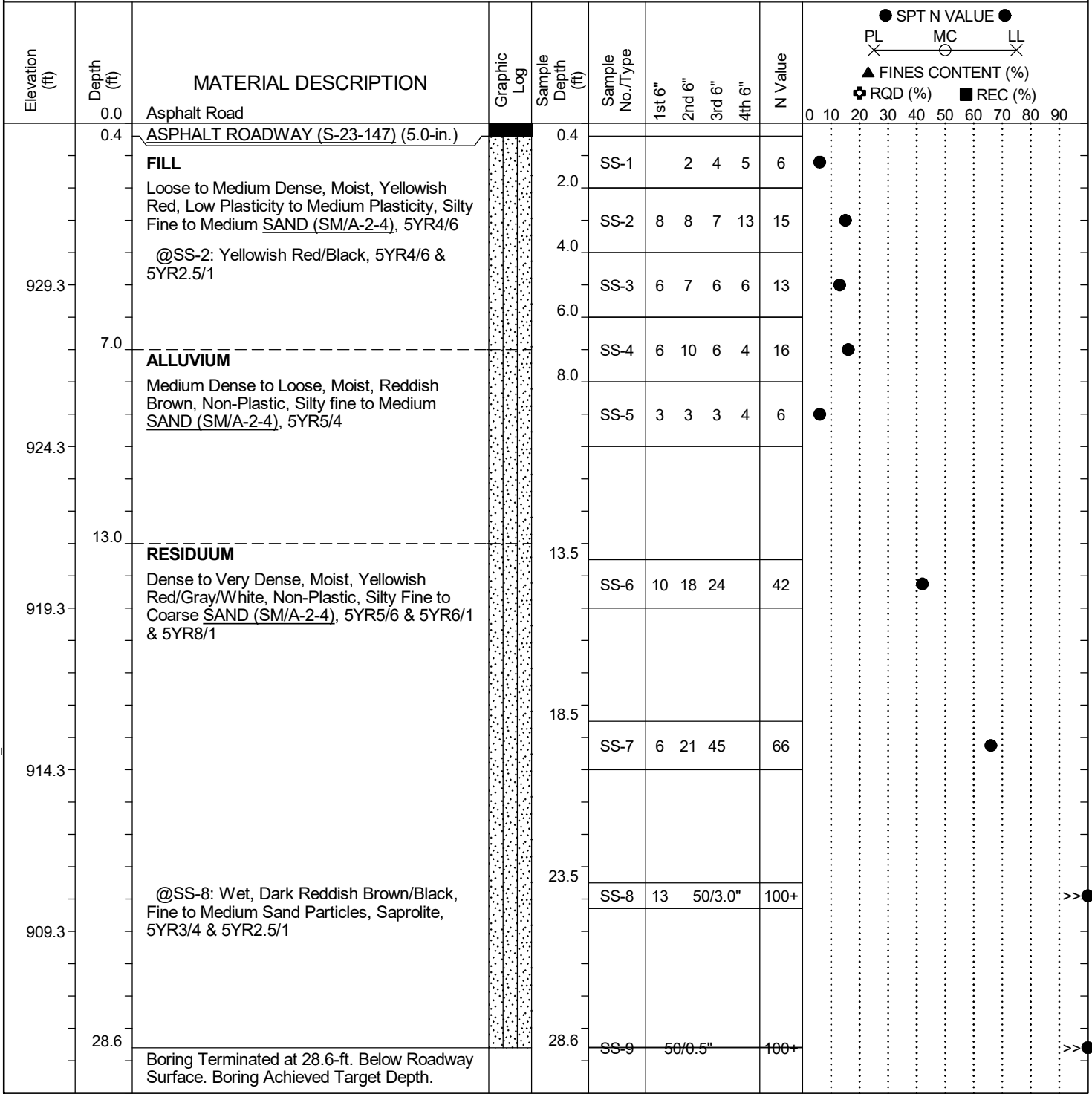
LEGEND

SAMPLER TYPE		DRILLING METHOD	
SS - Split Spoon	NQ - Rock Core, 1-7/8"	HSA - Hollow Stem Auger	RW - Rotary Wash
UD - Undisturbed Sample	CU - Cuttings	CFA - Continuous Flight Augers	RC - Rock Core
AWG - Rock Core, 1-1/8"	CT - Continuous Tube	DC - Driving Casing	

SC.DOT G7100.008 - TASK 00002 - S-147 OVER REEDY CREEK.GPJ SCDOT DATATEMPLATE.GDT 12/4/24

SCDOT Soil Test Log

Project ID: P044048	County: Greenville	Boring No.: W-1
Site Description: S-23-147 over Reedy River		Route: S-23-147
Eng./Geo.: M. Miller	Boring Location:	Offset:
Elev.: 934.3 ft	Latitude: 34.86568095	Longitude: -82.42049253
Total Depth: 28.6 ft	Soil Depth: 28.6 ft	Core Depth: N/A ft
Bore Hole Diameter (in): 3	Sampler Configuration	Liner Required: Y (N)
Drill Machine: CME 45B	Drill Method: HSA	Hammer Type: Automatic
Core Size: N/A	Driller: C. Taylor	Energy Ratio: 86.4%
Groundwater: TOB		10(cave@23) 24HR NR



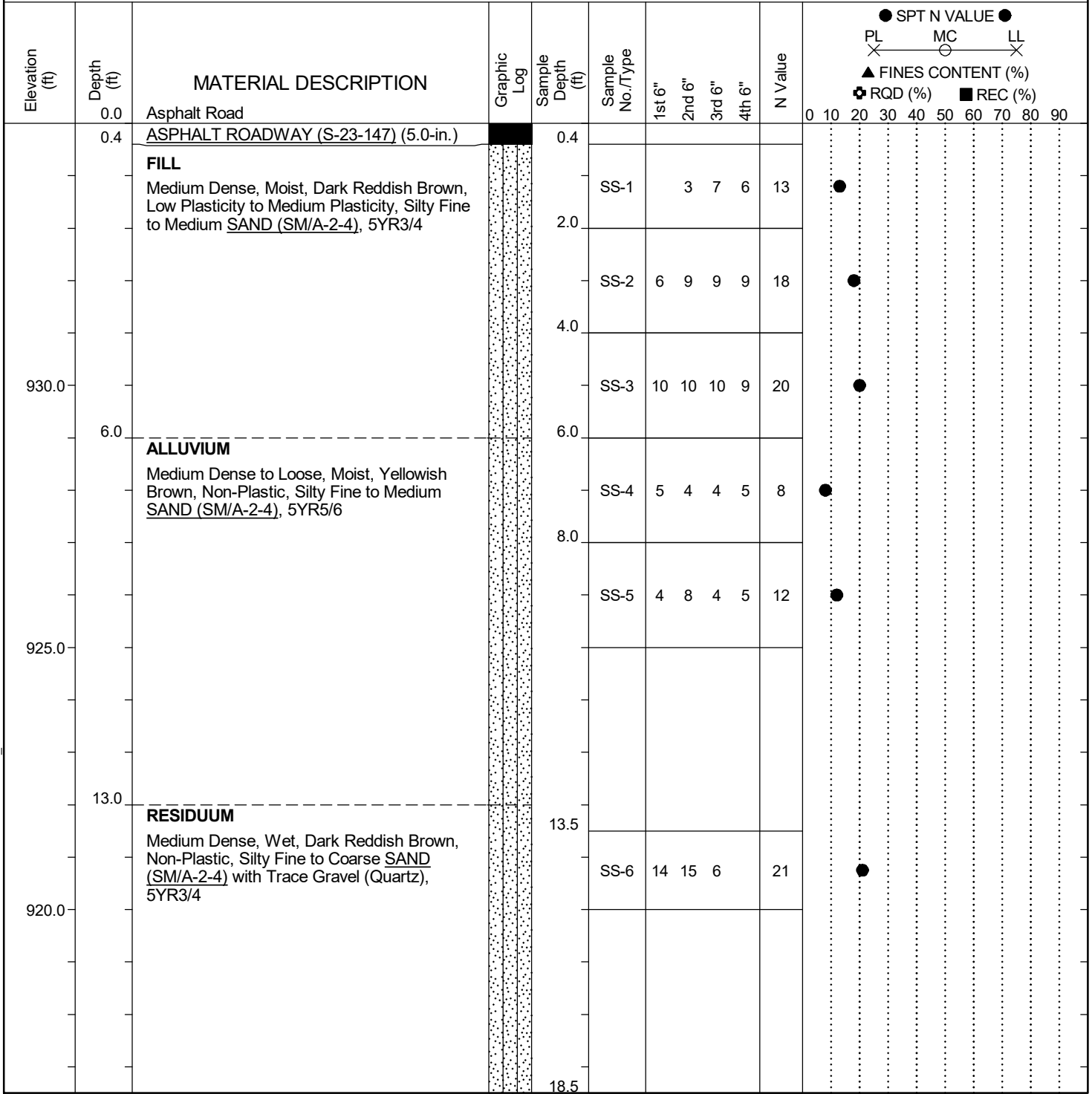
LEGEND

SAMPLER TYPE		DRILLING METHOD	
SS - Split Spoon	NQ - Rock Core, 1-7/8"	HSA - Hollow Stem Auger	RW - Rotary Wash
UD - Undisturbed Sample	CU - Cuttings	CFA - Continuous Flight Augers	RC - Rock Core
AWG - Rock Core, 1-1/8"	CT - Continuous Tube	DC - Driving Casing	

SC.DOT G7100.008 - TASK 00002 - S-147 OVER REEDY CREEK.GPJ SCDOT DATATEMPLATE.GDT 12/4/24

SCDOT Soil Test Log

Project ID: P044048	County: Greenville		Boring No.: W-2	
Site Description: S-23-147 over Reedy River			Route: S-23-147	
Eng./Geo.: M. Miller	Boring Location: N/A		Offset: N/A	Alignment: Existing
Elev.: 935.0 ft	Latitude: 34.86586988	Longitude: -82.42073442	Date Started: 12/3/2024	
Total Depth: 35.5 ft	Soil Depth: 35.5 ft	Core Depth: N/A ft	Date Completed: 12/3/2024	
Bore Hole Diameter (in): 3		Sampler Configuration	Liner Required: Y (N)	Liner Used: Y (N)
Drill Machine: CME 45B	Drill Method: HSA	Hammer Type: Automatic	Energy Ratio: 86.4%	
Core Size: N/A	Driller: C. Taylor	Groundwater: TOB	14(cave@25)	24HR NR



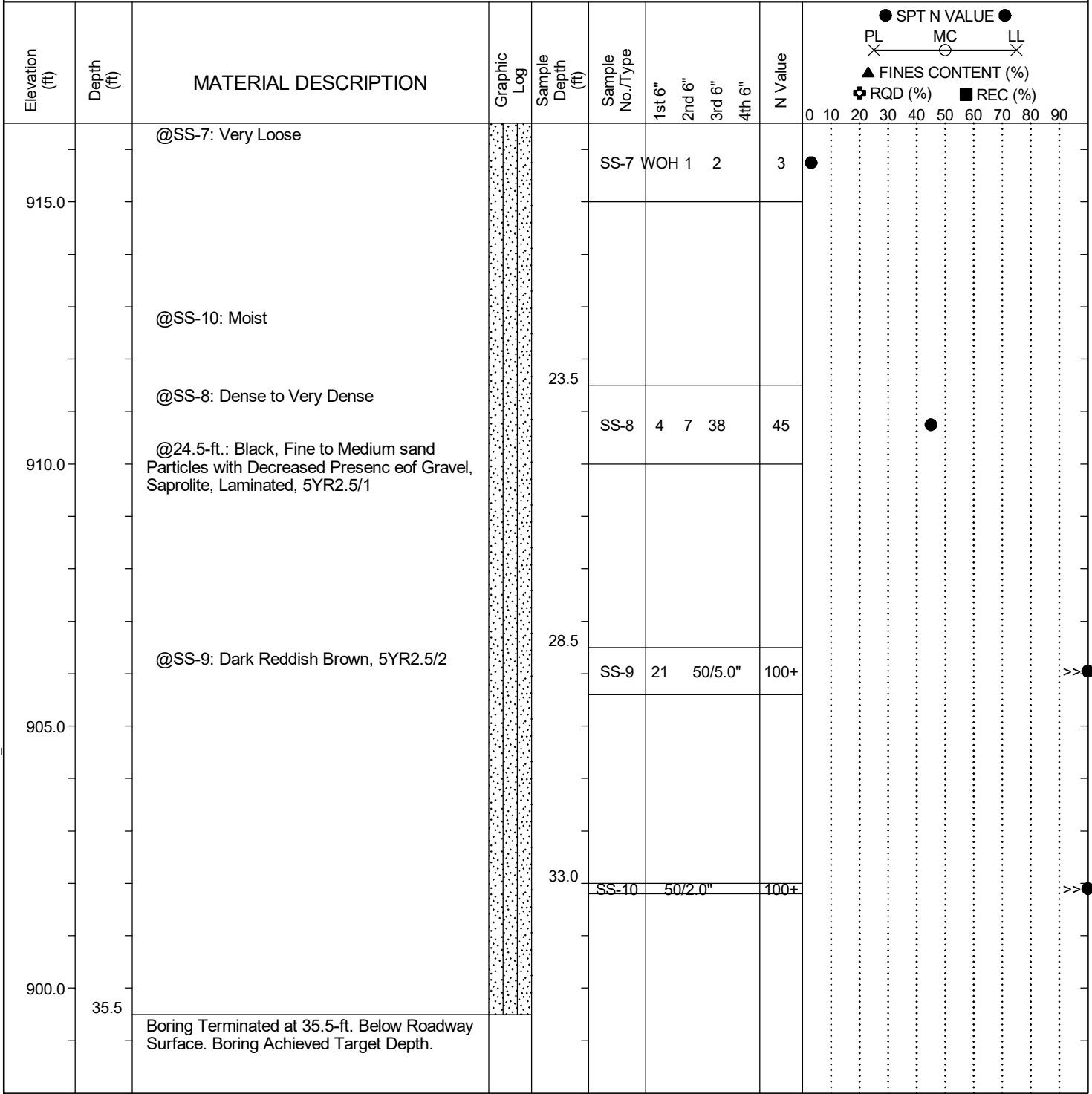
LEGEND Continued Next Page

SAMPLER TYPE		DRILLING METHOD	
SS - Split Spoon	NQ - Rock Core, 1-7/8"	HSA - Hollow Stem Auger	RW - Rotary Wash
UD - Undisturbed Sample	CU - Cuttings	CFA - Continuous Flight Augers	RC - Rock Core
AWG - Rock Core, 1-1/8"	CT - Continuous Tube	DC - Driving Casing	

SC.DOT G7100.008 - TASK 00002 - S-147 OVER REEDY CREEK.GPJ SCDOT_DATATEMPLATE.GDT 12/4/24

SCDOT Soil Test Log

Project ID: P044048	County: Greenville	Boring No.: W-2
Site Description: S-23-147 over Reedy River	Route: S-23-147	
Eng./Geo.: M. Miller	Boring Location: N/A	Offset: N/A
Alignment: Existing		
Elev.: 935.0 ft	Latitude: 34.86586988	Longitude: -82.42073442
Date Started: 12/3/2024		
Total Depth: 35.5 ft	Soil Depth: 35.5 ft	Core Depth: N/A ft
Date Completed: 12/3/2024		
Bore Hole Diameter (in): 3	Sampler Configuration	Liner Required: Y (N)
Liner Used: Y (N)		
Drill Machine: CME 45B	Drill Method: HSA	Hammer Type: Automatic
Energy Ratio: 86.4%		
Core Size: N/A	Driller: C. Taylor	Groundwater: TOB 14(cave@25) 24HR NR



LEGEND

SAMPLER TYPE		DRILLING METHOD	
SS - Split Spoon	NQ - Rock Core, 1-7/8"	HSA - Hollow Stem Auger	RW - Rotary Wash
UD - Undisturbed Sample	CU - Cuttings	CFA - Continuous Flight Augers	RC - Rock Core
AWG - Rock Core, 1-1/8"	CT - Continuous Tube	DC - Driving Casing	

SC.DOT G7100.008 - TASK 00002 - S-147 OVER REEDY CREEK.GPJ_SCDOT_DATATEMPLATE.GDT 12/4/24