

December 17, 2024

Mr. Trapp Harris, P.E.  
South Carolina Department of Transportation  
955 Park Street  
Columbia, South Carolina 29201

Re: Geotechnical Subsurface Data Report – Addendum 1  
Jones Gap Bridge over Middle Saluda River  
Greenville County, South Carolina  
FME Project No.: G7100.008 – Task 00040

Mr. Harris:

Submitted herein is F&ME Consultants, Inc.'s (FME) Addendum to the Geotechnical Subsurface Data Report for the Jones Gap Bridge over Middle Saluda River project. This addendum contains manual auger logs for four manual auger holes performed on the north side of the Middle Saluda River.

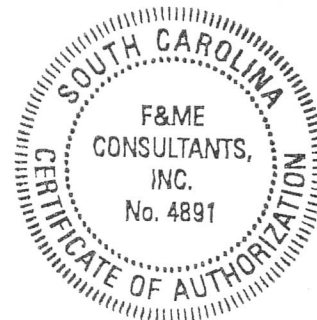
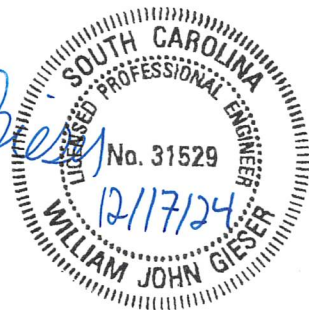
It has been a pleasure working with you on this project and we appreciate the opportunity to be of service. Please notify us if there are any questions or if we can be of further assistance.

Respectfully Submitted,

**F&ME CONSULTANTS, INC.**

  
J. Trey Peterson, E.I.T.  
Geotechnical Staff Professional

  
William J. Gieser, P.E.  
Senior Project Engineer



# Jones Gap Bridge over Middle Saluda River

## Addendum

---

### APPENDIX

SECTION 1	SITE LOCATION PLAN
SECTION 2	BORING LOCATION PLAN
SECTION 3	SUBSURFACE EXPLORATION LOGS

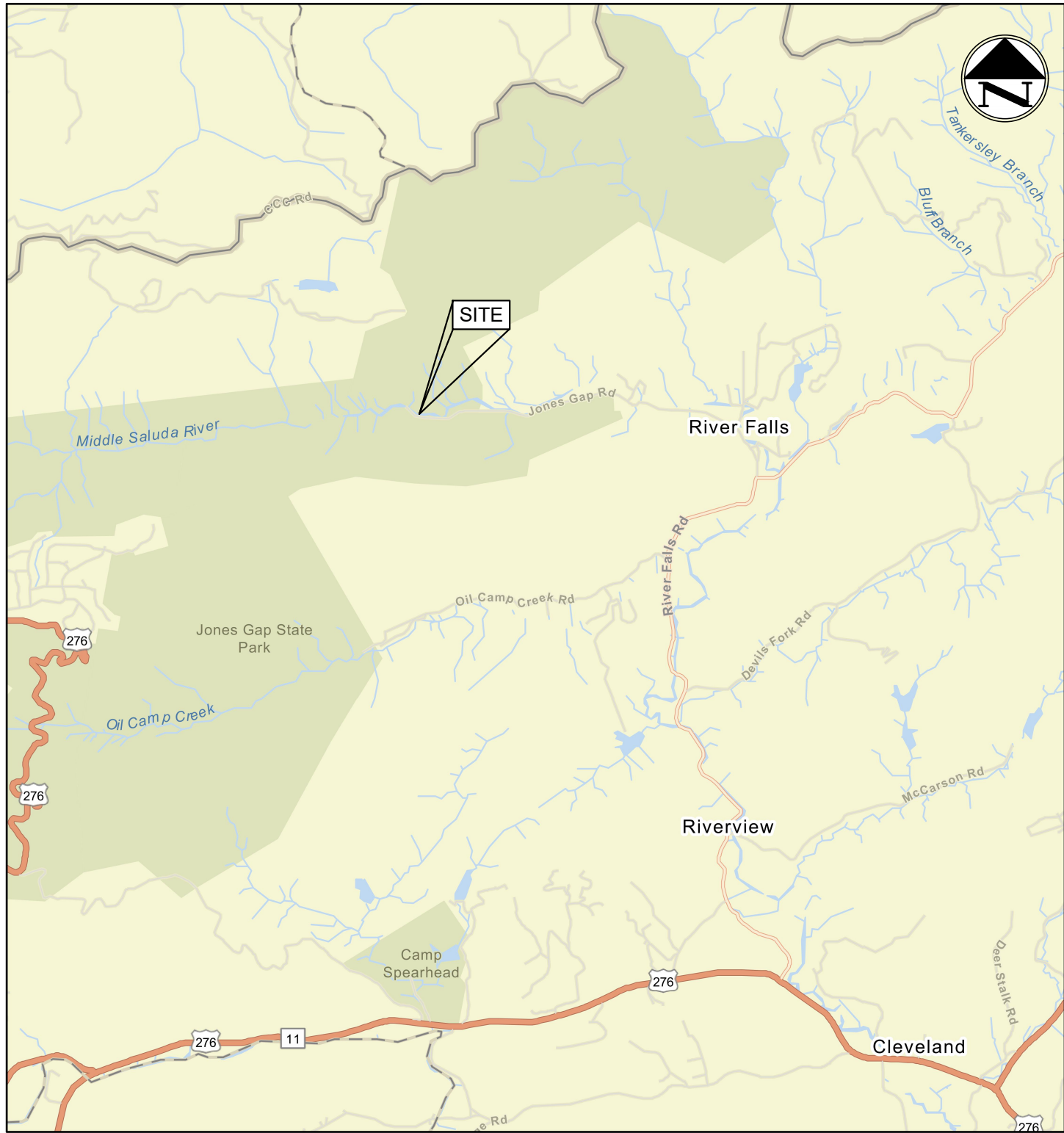
# Jones Gap Bridge over Middle Saluda River

## Addendum

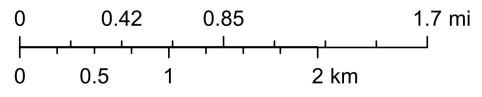
---

# APPENDIX

## SECTION 1      SITE LOCATION PLAN



1:62,000



F&ME CONSULTANTS, INC.  
COLUMBIA, SC

4			
3			
2			
1			
REV.	BY	DATE	DESCRIPTION OF REVISION
TOPO.		DATE	
DWG.	CTC	DATE 12.2.24	GROUP -- --
R/W		DATE	

S-23-97 OVER MIDDLE SALUDA RIVER  
GREENVILLE COUNTY, SOUTH CAROLINA

SITE LOCATION PLAN

SCDOT PROJECT ID: N/A

FME JOB NO. G7100.008 Task 00040

SCALE: AS NOTED

FIGURE 1

# Jones Gap Bridge over Middle Saluda River

## Addendum

---

# APPENDIX

## SECTION 2 BORING LOCATION PLAN






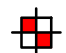
**SUBSURFACE TESTING DATA**

Boring ID	Test Type	<sup>1</sup> Northing	<sup>1</sup> Easting	<sup>1</sup> Latitude	<sup>1</sup> Longitude	Test Depth (ft)
B-1	STB	1201404.144	1529240.181	35.12526700	-82.57408900	73.5
B-2	STB	1201395.029	1529360.585	35.12524700	-82.57368600	20.0
HA-1	MAB	1201429.868	1529272.278	35.12533900	-82.57398300	2.2
HA-2	MAB	1201435.411	1529243.050	35.12535300	-82.57408100	1.1
HA-3	MAB	1201453.382	1529258.279	35.12540300	-82.57403100	1.2
HA-4	MAB	1201431.324	1529296.230	35.12534400	-82.57390300	2.0

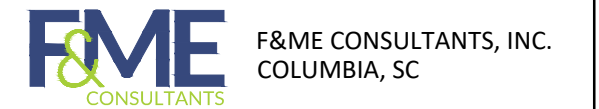
<sup>1</sup> = Location coordinates were approximated based on known landmarks. Elevation information was not obtained. Location coordinates are intended for informational purposes only.



**LEGEND:**

-  SOIL TEST BORING LOCATION
-  MANUAL AUGER BORING LOCATION

4				
3				
2				
1				
REV.	BY	DATE	DESCRIPTION OF REVISION	
TOPO.		DATE		
DWG.	CTC	DATE	12.2.24	GROUP
R/W		DATE		



S-23-97 OVER MIDDLE SALUDA RIVER  
GREENVILLE COUNTY, SOUTH CAROLINA

**BORING LOCATION PLAN**

SCDOT PROJECT ID: N/A FME JOB NO. G7100.008 Task 00040  
SCALE: 1" = 60' FIGURE 2

# Jones Gap Bridge over Middle Saluda River

## Addendum

---

# APPENDIX

## SECTION 3      SUBSURFACE EXPLORATION LOGS

# SCDOT Manual Auger Log

Project ID: N/A		County: Greenville		Boring No.: HA-1	
Site Description: Jones Gap Bridge over Middle Saluda River			Route: S-23-97		
Driller: W. Pitts		Boring Location: N/A		Offset: N/A	
Alignment: Existing		Elev.: N/A ft		Latitude: 35.125339	
Longitude: -82.573983		Date Started: 12/16/2024		Total Depth: 2.1 ft	
Groundwater: TOB		N/A		24 hr Backfilled	
Date Completed: 12/16/2024		Dynamic Cone Penetrometer Test Procedure: Sowers and Hedges (1966)			

Elevation (ft)	Depth (ft)	MATERIAL DESCRIPTION	Graphic Log	Sample Depth (ft)	Sample No./Type	1.75" Intervals			DCP-Value	FINES CONTENT (%)									
						1st 1.75"	2nd 1.75"	3rd 1.75"		0	10	20	30	40	50	60	70	80	90
	0.0	Medium Dense, Moist, Very Dark Gray/Reddish Brown, Non-Plastic, Silty Fine to Coarse SAND (SM/A-2-4) with Gravel, 5YR3/1 & 5YR5/3		0.0	DS-1	8	17	16	13	● DCP-VALUE ● PL X MC O LL X ▲ FINES CONTENT (%)									
	1.0	@DS-2: Brown, 7.5YR5/4		1.0	DS-2	10	7	8	13										
	2.2	Boring Terminated at 2.2-ft Below the Existing Ground Surface Due to Auger Refusal.		2.0	DS-3	17 25/.25"			13										

### LEGEND

SAMPLER TYPE		DRILLING METHOD	
SS - Split Spoon	DCP - Dynamic Cone Penetrometer	HSA - Hollow Stem Auger	RW - Rotary Wash
UD - Undisturbed Sample	CU - Cuttings	CFA - Continuous Flight Augers	RC - Rock Core
AWG - Rock Core, 1-1/8"	CT - Continuous Tube	DC - Driving Casing	

MANUAL AUGER LOG G7100.008 - TASK 00004 - JONES GAP.GPJ FME2017.GDT 12/17/24



# SCDOT Manual Auger Log

Project ID: N/A		County: Greenville		Boring No.: HA-2	
Site Description: Jones Gap Bridge over Middle Saluda River			Route: S-23-97		
Driller: W. Pitts		Boring Location: N/A		Offset: N/A	
Alignment: Existing		Elev.: N/A ft		Latitude: 35.125353	
Longitude: -82.574081		Date Started: 12/16/2024		Total Depth: 1.1 ft	
Groundwater: TOB		N/A		24 hr Backfilled	
Date Completed: 12/16/2024		Dynamic Cone Penetrometer Test Procedure: Sowers and Hedges (1966)			

Elevation (ft)	Depth (ft)	MATERIAL DESCRIPTION	Graphic Log	Sample Depth (ft)	Sample No./Type	1.75" Intervals			DCP-Value	FINES CONTENT (%)									
						1st 1.75"	2nd 1.75"	3rd 1.75"		0	10	20	30	40	50	60	70	80	90
	0.0	Medium Dense, Moist, Dark Gray/Brown, Non-Plastic, Fine to Coarse Poorly Graded SAND (SP-SM/A-3) with Silt & Trace Gravel, 7.5YR4/1 & 7.5YR5/3		0.0	DS-1	4	5	6	11	● DCP-VALUE ● PL X MC O LL X ▲ FINES CONTENT (%)									
	1.1	Boring Terminated at 1.1-ft Below the Existing Ground Surface Due to Auger Refusal.		1.0	DS-2	25/0.5"			13	● DCP-VALUE ●									

### LEGEND

SAMPLER TYPE		DRILLING METHOD	
SS - Split Spoon	DCP - Dynamic Cone Penetrometer	HSA - Hollow Stem Auger	RW - Rotary Wash
UD - Undisturbed Sample	CU - Cuttings	CFA - Continuous Flight Augers	RC - Rock Core
AWG - Rock Core, 1-1/8"	CT - Continuous Tube	DC - Driving Casing	

MANUAL AUGER LOG G7100.008 - TASK 00004 - JONES GAP.GPJ FME2017.GDT 12/17/24

# SCDOT Manual Auger Log

Project ID: N/A		County: Greenville		Boring No.: HA-3	
Site Description: Jones Gap Bridge over Middle Saluda River			Route: S-23-97		
Driller: W. Pitts		Boring Location: N/A		Offset: N/A	
Alignment: Existing		Elev.: N/A ft		Latitude: 35.125403	
Longitude: -82.574031		Date Started: 12/16/2024		Total Depth: 1.2 ft	
Groundwater: TOB		N/A		24 hr Backfilled	
Date Completed: 12/16/2024		Dynamic Cone Penetrometer Test Procedure: Sowers and Hedges (1966)			

Elevation (ft)	Depth (ft)	MATERIAL DESCRIPTION	Graphic Log	Sample Depth (ft)	Sample No./Type	1.75" Intervals			DCP-Value	FINES CONTENT (%)									
						1st 1.75"	2nd 1.75"	3rd 1.75"		0	10	20	30	40	50	60	70	80	90
	0.0	Medium Dense, Moist, Very Dark Gray/Brown, Non-Plastic, Silty Fine to Coarse SAND (SM/A-2-4) with Trace Gravel, 7.5YR3/1 & 7.5YR4/3		0.0	DS-1	11	16	12	13	● DCP-VALUE ● PL X MC O LL X ▲ FINES CONTENT (%)									
	1.2	Boring Terminated at 1.2-ft. Below the Existing Ground Surface Due to Auger Refusal.		1.0	DS-2	25/1.5"			13										

### LEGEND

SAMPLER TYPE		DRILLING METHOD	
SS - Split Spoon	DCP - Dynamic Cone Penetrometer	HSA - Hollow Stem Auger	RW - Rotary Wash
UD - Undisturbed Sample	CU - Cuttings	CFA - Continuous Flight Augers	RC - Rock Core
AWG - Rock Core, 1-1/8"	CT - Continuous Tube	DC - Driving Casing	

MANUAL AUGER LOG G7100.008 - TASK 00004 - JONES GAP.GPJ FME2017.GDT 12/17/24

# SCDOT Manual Auger Log

<b>Project ID:</b> N/A	<b>County:</b> Greenville	<b>Boring No.:</b> HA-4
<b>Site Description:</b> Jones Gap Bridge over Middle Saluda River		<b>Route:</b> S-23-97
<b>Driller:</b> W. Pitts	<b>Boring Location:</b> N/A	<b>Offset:</b> N/A
<b>Elev.:</b> N/A ft	<b>Latitude:</b> 35.125344	<b>Longitude:</b> -82.573903
<b>Total Depth:</b> 2 ft	<b>Groundwater:</b> TOB	<b>Date Started:</b> 12/16/2024
<b>Dynamic Cone Penetrometer Test Procedure:</b> Sowers and Hedges (1966)		<b>Date Completed:</b> 12/16/2024

Elevation (ft)	Depth (ft)	MATERIAL DESCRIPTION	Graphic Log	Sample Depth (ft)	Sample No./Type	1.75" Intervals			DCP-Value	FINES CONTENT (%)									
						1st 1.75"	2nd 1.75"	3rd 1.75"		0	10	20	30	40	50	60	70	80	90
	0.0	Loose to Medium Dense, Moist, Very Dark Gray/Brown, Non-Plastic, Fine to Medium Poorly Graded SAND (SP-SM/A-3) with Silt & Trace Gravel, 7.5YR3/ & 7.5YR4/4		0.0	DS-1	6	7	8	12	● DCP-VALUE ● PL X MC O LL X ▲ FINES CONTENT (%)									
	1.0	@DS-2: Brown, 7.5YR5/4		1.0	DS-2	6	4	6	10										
	2.0	Boring Terminated at 2.0-ft Below the Existing Ground Surface Due to Auger Refusal.		2.0	DS-3	25/0"			13										

### LEGEND

SAMPLER TYPE		DRILLING METHOD	
SS - Split Spoon	DCP - Dynamic Cone Penetrometer	HSA - Hollow Stem Auger	RW - Rotary Wash
UD - Undisturbed Sample	CU - Cuttings	CFA - Continuous Flight Augers	RC - Rock Core
AWG - Rock Core, 1-1/8"	CT - Continuous Tube	DC - Driving Casing	

MANUAL AUGER LOG G7100.008 - TASK 00004 - JONES GAP.GPJ FME2017.GDT 12/17/24