

Cone Penetration Test



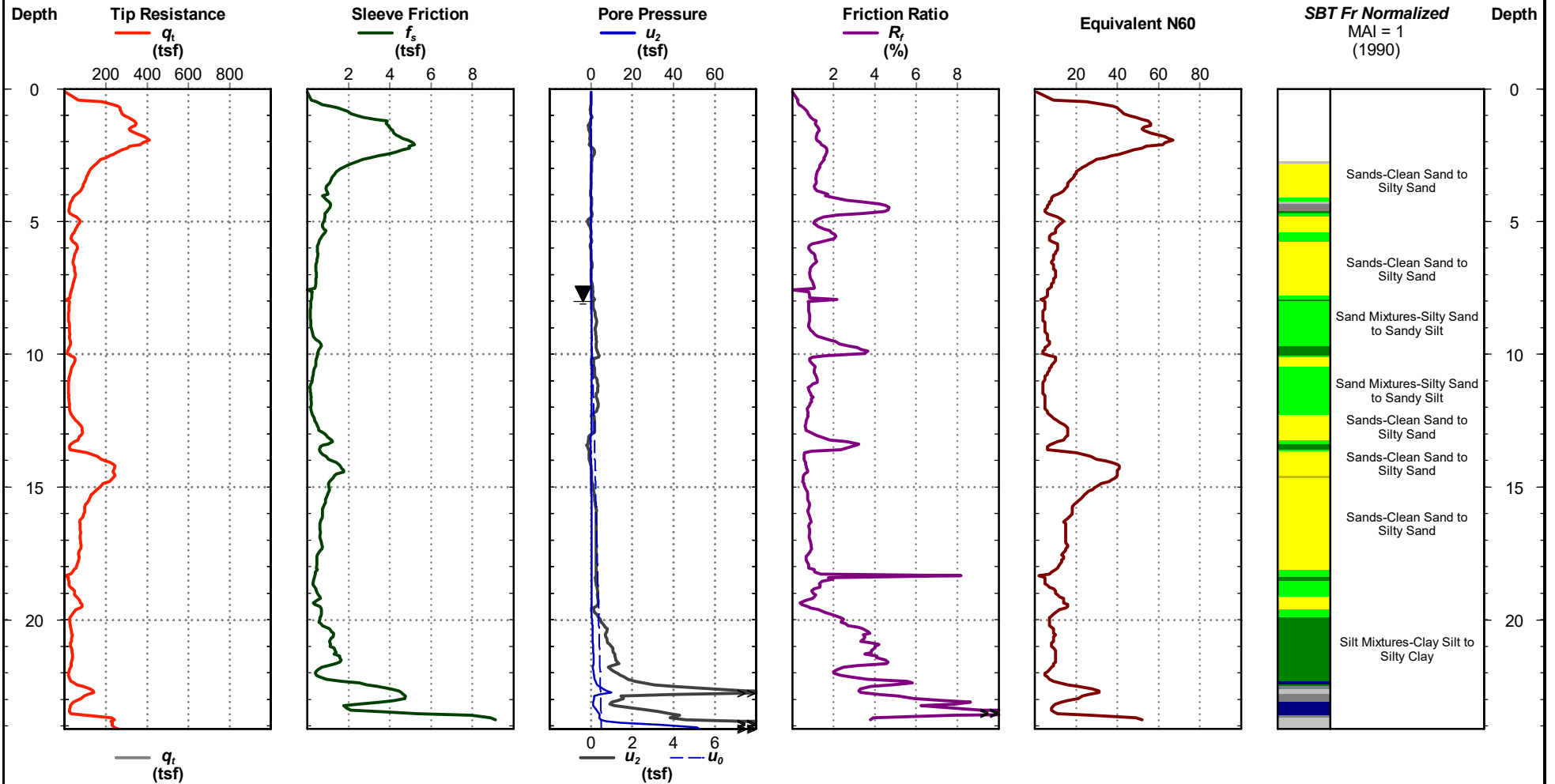
US 278 over Beaver Dam Branch
Jasper County (South Carolina)
Project Number :P043789

CPT-3

Date: Oct. 14, 2024
Estimated Water Depth: 8 ft
Rig/Operator: G. Cantele

Station:
Offset:
Elevation: ft-MSL

Total Depth: 24.1 ft
Termination Criteria: Maximum Reaction Force
CPT Probe ID: DDG1329



CPT-3