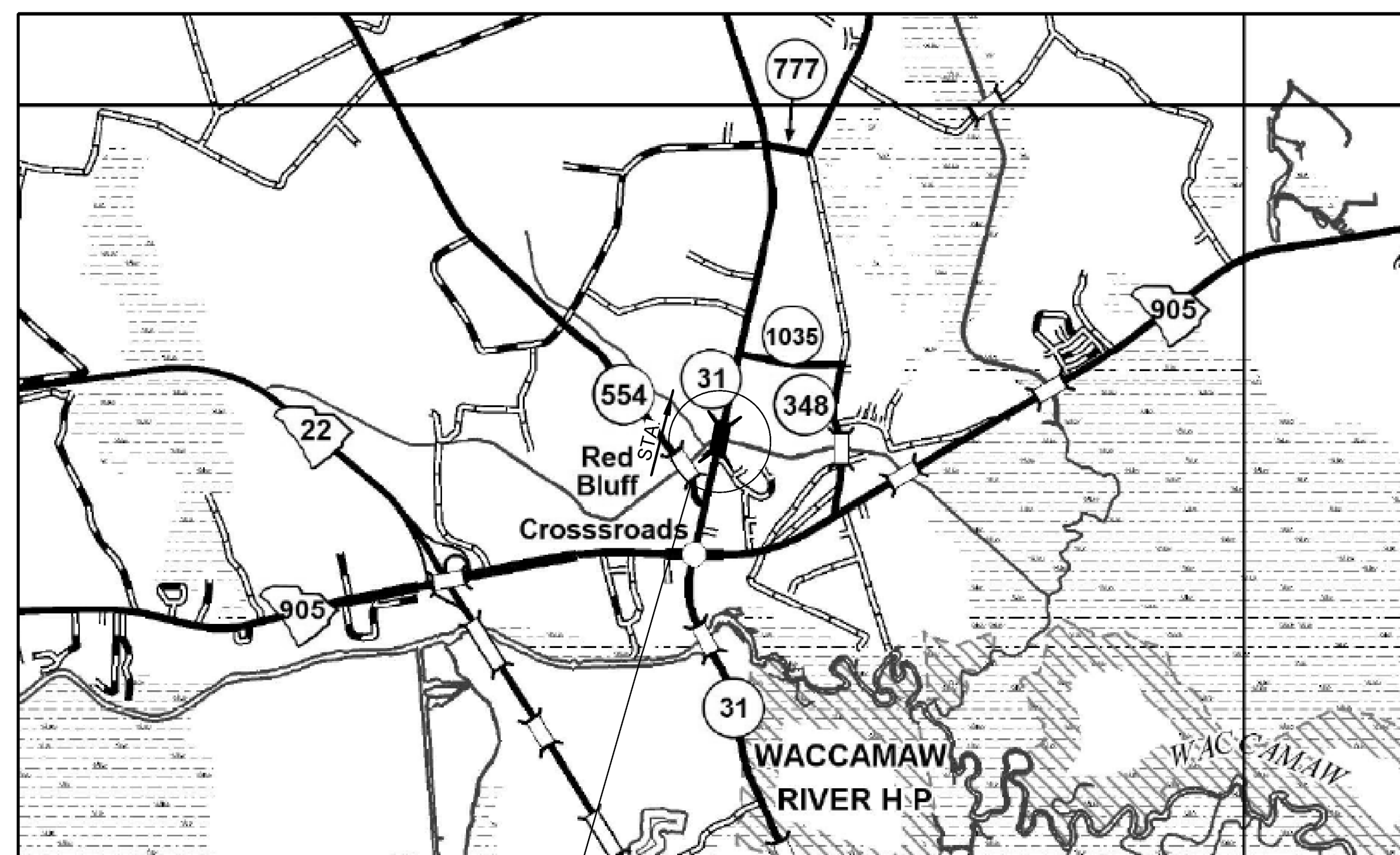


INDEX OF SHEETS
 1. TITLE SHEET
 2. BRIDGE PLAN AND PROFILE
 3. BRIDGE TYPICAL SECTION



PROPOSED PLANS FOR HORRY COUNTY PROJECT ID P041157 STATE ROUTE S-26-31 (RED BLUFF RD) REPLACE BRIDGE OVER TOD SWAMP



Approximate Location of Bridge is
 Latitude 33°-54'-44" N
 Longitude 78°-50'-18" W

SITE LOCATION — LAYOUT

3 DAYS BEFORE DIGGING IN
SOUTH CAROLINA
CALL 811
 SOUTH CAROLINA 811 (SC811)
 WWW.SC811.COM
 ALL UTILITIES MAY NOT BE A MEMBER OF SC811

ASSET ID NOT ASSIGNED

TRAFFIC DATA

2025 ADT 6400 V.P.D.
 2045* ADT 12000* V.P.D.
 TRUCKS 4 %

*DESIGN TRAFFIC DATA

NET LENGTH OF ROADWAY	0.000	MILES
NET LENGTH OF BRIDGES	0.015	MILES
NET LENGTH OF PROJECT	0.015	MILES
LENGTH OF EXCEPTIONS	0.000	MILES
GROSS LENGTH OF PROJECT	0.015	MILES

NOTE: EXCEPT AS MAY OTHERWISE BE SPECIFIED ON THE PLANS OR IN THE SPECIAL PROVISIONS, ALL MATERIALS AND WORKMANSHIP ON THIS PROJECT SHALL CONFORM TO THE SOUTH CAROLINA DEPARTMENT OF TRANSPORTATION STANDARD SPECIFICATIONS FOR HIGHWAY CONSTRUCTION (2007 EDITION) AND THE STANDARD DRAWINGS FOR ROAD CONSTRUCTION IN EFFECT AT THE TIME OF LETTING.

CONSULTING ENGINEERING FIRM
HNTB
 HNTB CORPORATION
 SC License No. 265
 343 E. Six Forks Rd., Suite 200, Raleigh, N.C. 27609

ENGINEER OF RECORD
**CONCEPTUAL
PLANS
NOT FOR
CONSTRUCTION**

FOR CONSTRUCTION: _____ DATE _____

CADD FILE INFORMATION
 PLOTTED DATE: 5/14/2024
 FILE NAME: ...S-26-31over Tod Swamp.rts_Microstation.dgn
 5:45:27 PM
 1/24
 BIA
 DLH
 DR.
 BY
 CHK
 DATE
 REVIEWED

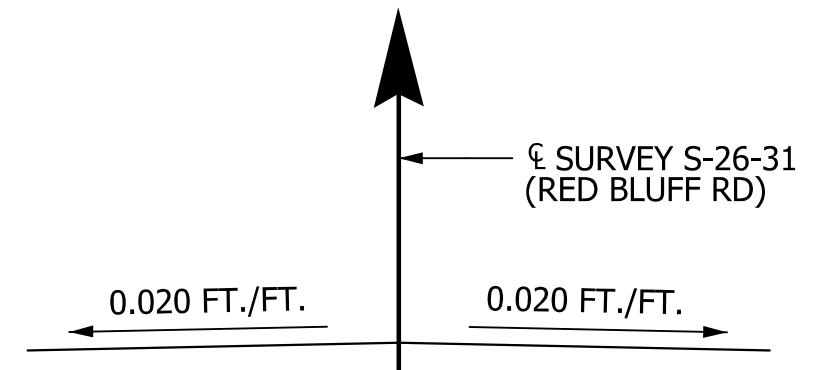
- NOTES:
- (A) PROPOSED PROFILE SET SO THAT THE LOW CHORD SATISFIES THE HYDRAULIC REQUIREMENTS, SET FORTH BY THE RFP.
 - (B) INCLUDES 1'-0" MASH BARRIER PARAPET AND 1½" SLAB EXTENSION.
 - (C) REMOVE AND DISPOSE OF EXISTING 28'-0" x 45'-0" 3-SPAN SIMPLE CONCRETE SLAB BRIDGE AND APPURTENANCES IN ACCORDANCE WITH SECTION 202.4.2 OF THE STANDARD SPECIFICATIONS.

I - DENOTES INTEGRAL END BENT
 [Hatched Area] = EXCAVATE HATCHED AREA

CONTROL POINTS

CP 2
 ELEVATION = 23.150'
 N 763746.91 E 2655814.51
 #5 REBAR

CP 3
 ELEVATION = 23.710'
 N 762737.84 E 2655618.45
 #5 REBAR



TYPICAL THROUGHOUT BRIDGE SUPERELEVATION SKETCH

VERTICAL CURVE DATA

VPI = 556+45.00
 ELEV. 30.12'
 V.C. = 470'

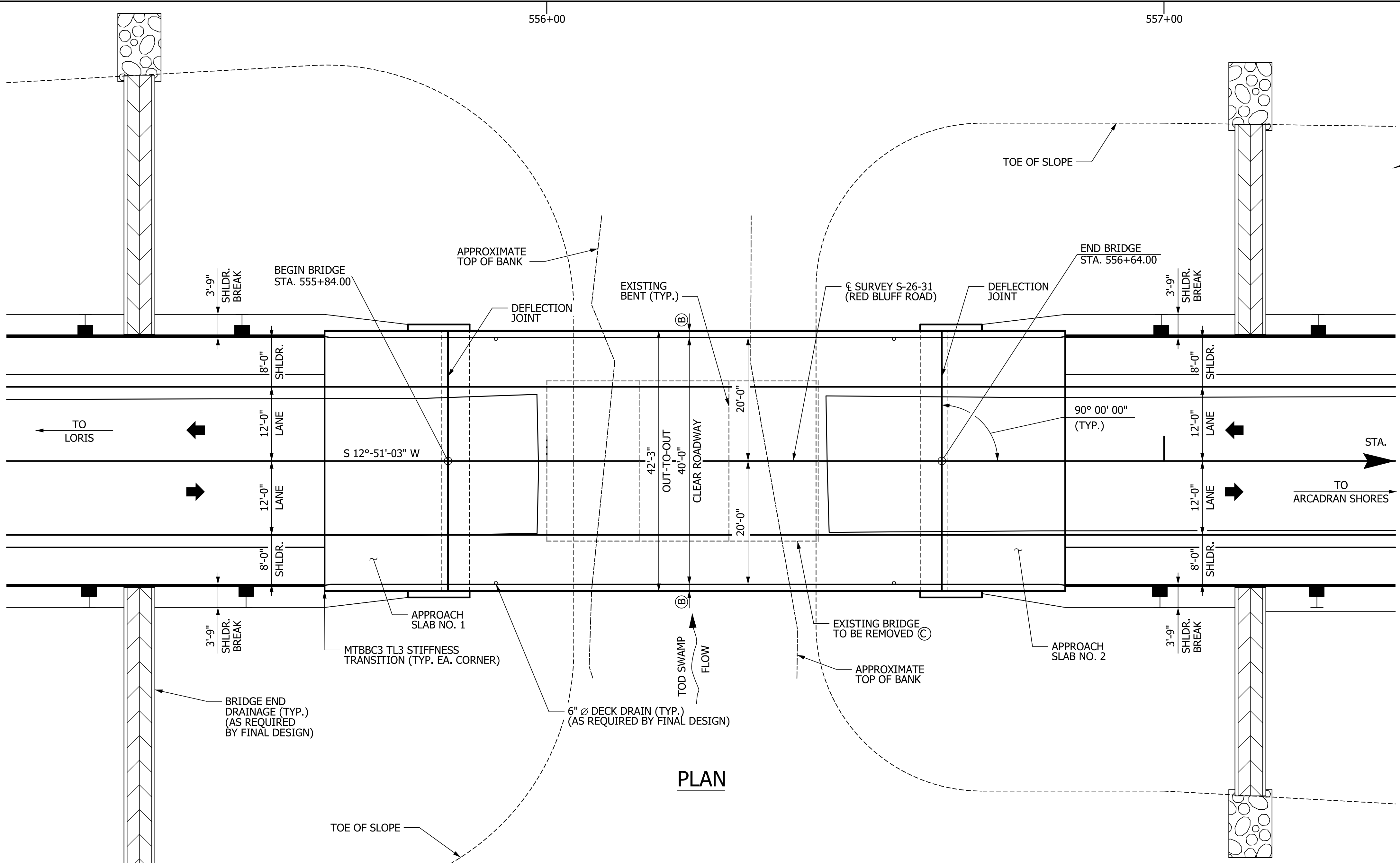
+1.50% -1.53%

HYDROLOGY DATA

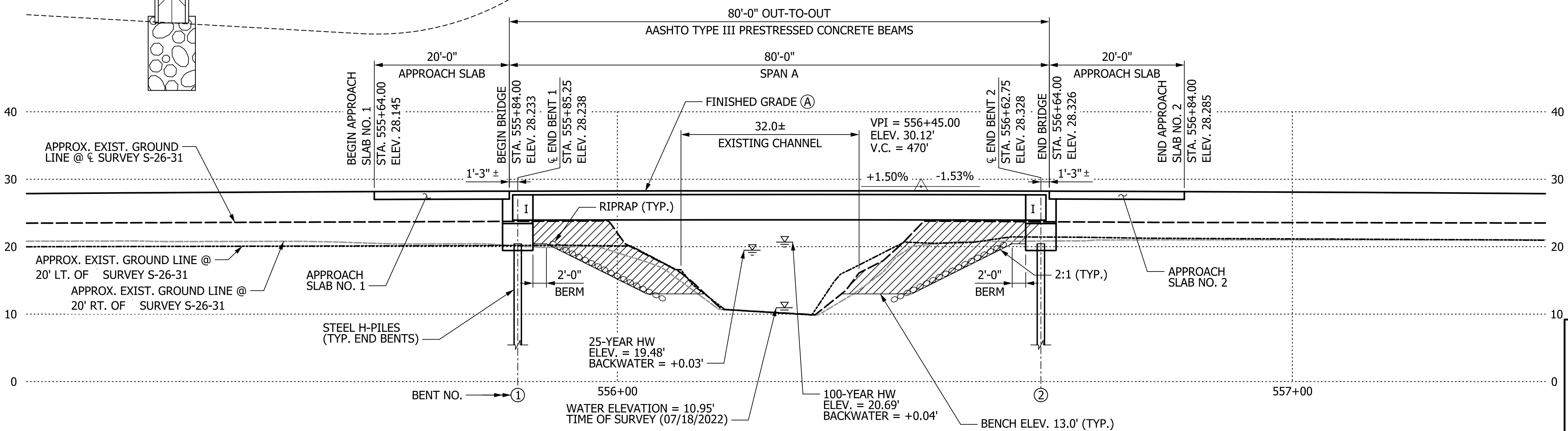
D.A. = 3.44 SQ. MILES
 Q₂₅ = 589 CFS
 VELOCITY₂₅ = 1.3 FPS
 AREA FURNISHED UNDER₂₅ = 448.3 SQ. FT.
 Q₁₀₀ = 922 CFS
 VELOCITY₁₀₀ = 1.7 FPS
 AREA FURNISHED UNDER₁₀₀ = 543.4 SQ. FT.

OVERTOPPING FLOOD

Q >= 1,350 CFS
 PROBABILITY < 0.2%



PLAN

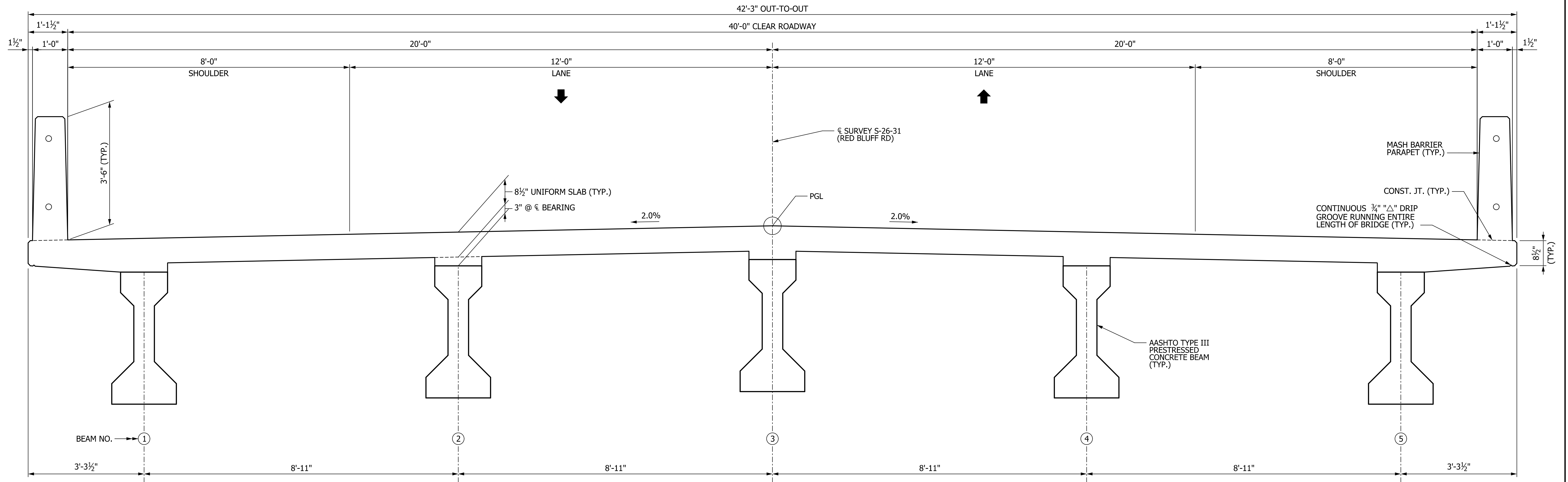


SECTION ALONG SURVEY S-26-31

NOT FOR CONSTRUCTION

CONCEPTUAL PLANS	REV.			HNTB HNTB CORPORATION SC License No. 265 343 E. Six Forks Rd., Suite 200, Raleigh, N.C. 27609					
	REV.								
	REV.								
	REV.								
BRIDGE PLAN AND PROFILE				SOUTH CAROLINA DEPARTMENT OF TRANSPORTATION					
					S-26-31 (RED BLUFF ROAD) BRIDGE REPLACEMENT OVER TOD SWAMP				
					COUNTY	Horry		ROUTE	S-26-31
					BY	CHK.	DATE		

CADD FILE INFORMATION 5:58:13 PM
 PLOTTED DATE: 5/14/2024
 FILE NAME: ..\S-26-31\over Tod Swamp.bp..Microstation.dgn



TYPICAL SECTION
(LOOKING IN DIRECTION OF STATIONING)

CADD FILE INFORMATION 6:07:42 PM
 PLOTTED DATE: 5/14/2024
 FILE NAME: ..\S-26-31\over Tod Swamp.sx.Microstation.dgn

NOT FOR CONSTRUCTION	CONCEPTUAL PLANS				HNTB HNTB CORPORATION SC License No. 265 343 E. Six Forks Rd., Suite 200, Raleigh, N.C. 27609			
	REV.				SOUTH CAROLINA DEPARTMENT OF TRANSPORTATION			
	REV.				BRIDGE TYPICAL SECTION			
	REV.				S-26-31 (RED BLUFF ROAD) BRIDGE REPLACEMENT OVER TOD SWAMP			
	QUAN.				COUNTY Horry ROUTE S-26-31			
	DR.	DLH	BJA	1/24				
DES.								
BY	CHK.	DATE						