



I-77 EXIT 26 NEW INTERCHANGE AND CONNECTING ROADS

EARLY COORDINATION MEETING
October 26, 2023

Purpose

- Provide Information
- Gauge Industry Interest & Competition
- Get Feedback & Answer Questions

Disclaimer

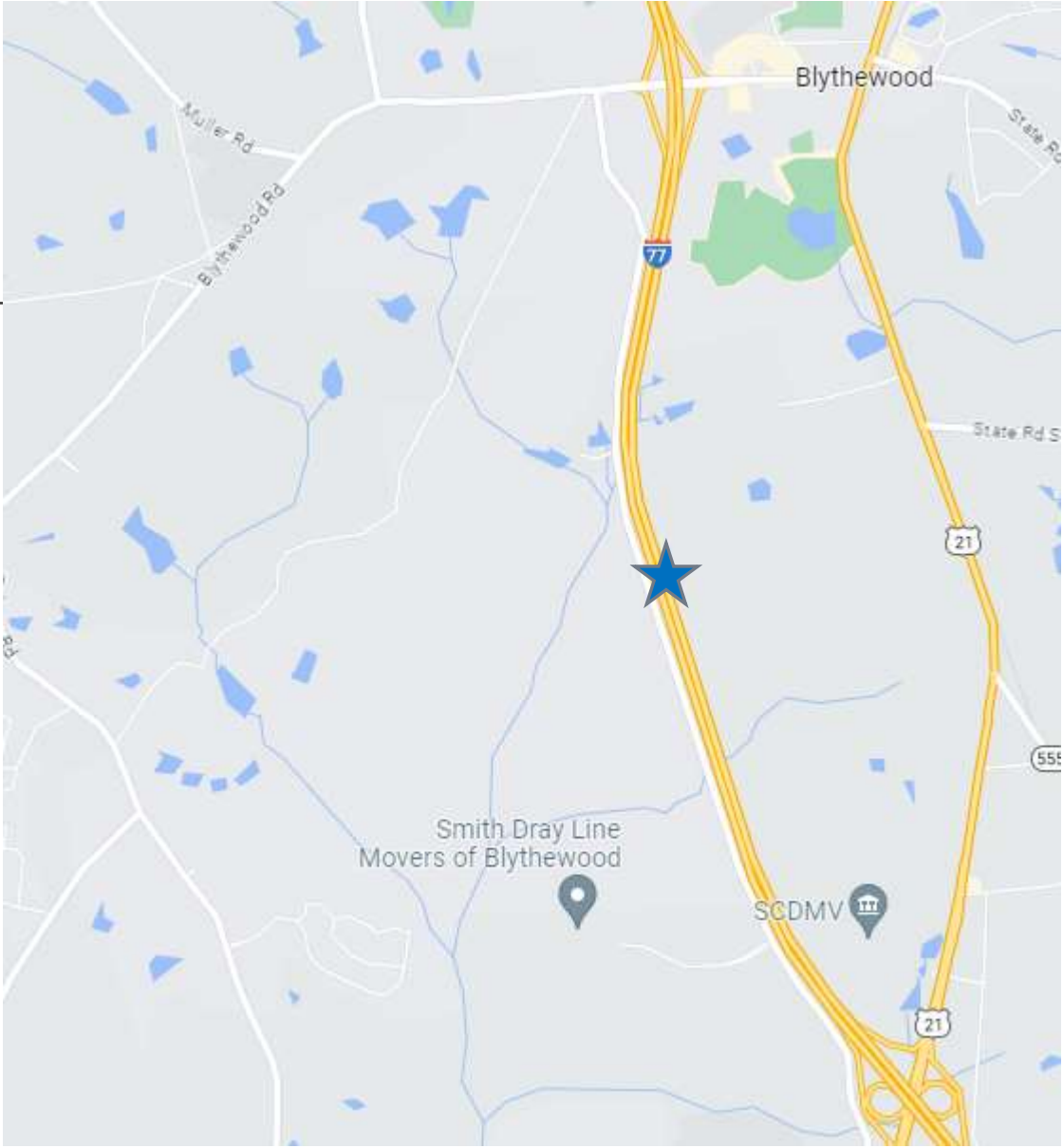
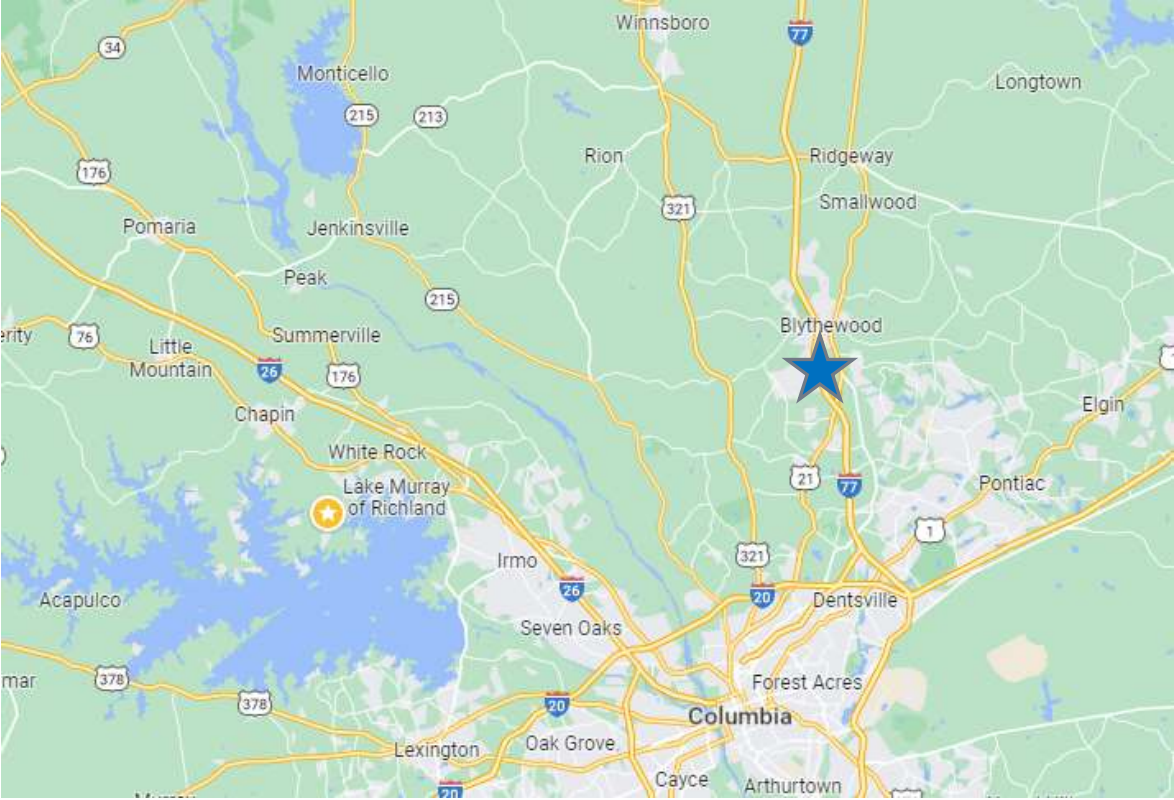
All information provided today is for information only, non-binding, does not constitute legal or other advice, and does not amend or form part of the Final Request for Proposals (RFP).

Agenda

- Location / Overview
- Scope of Work
- Procurement Type
- Schedule
- Q&A

Project Location

Richland County near the Town of Blythewood

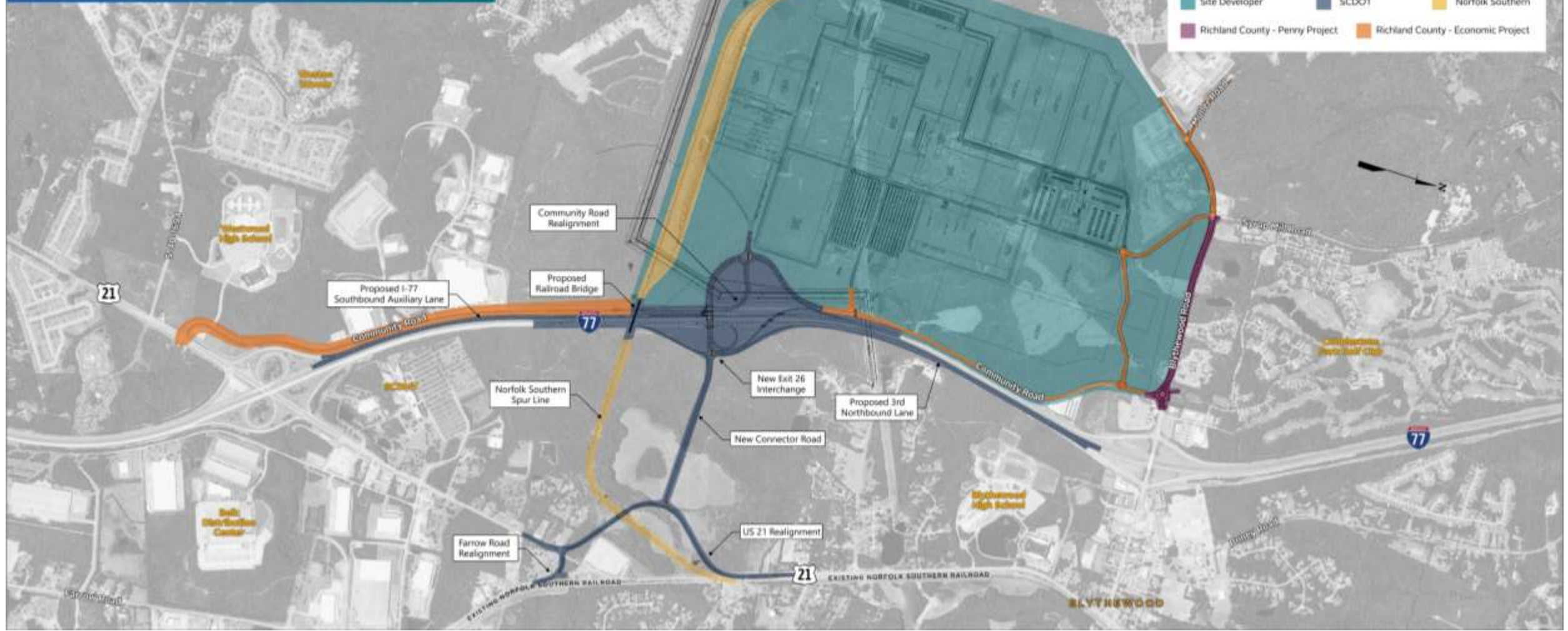


Project Overview

I-77 Exit 26 New Interchange and Connecting Roads



LEGEND		
Site Developer	SCDOT	Norfolk Southern
Richland County - Perry Project	Richland County - Economic Project	



Anticipated Scope of Work

- New Exit 26 Interchange
- New Connector Road from Exit 26 to US 21
- Reroute of US 21 to include a grade separated crossing of the new Norfolk Southern RR Spur
- Widening of I-77 NB
- Bid-Build Stand alone RR Bridge over I-77

Structures

- New Railroad Bridge over I-77, going bid-build first
- Currently anticipating three unique vehicular bridges:
 - Relocated US 21 over new railroad spur: Single-span concrete girder bridge with MSE Wall abutments
 - Connector road overpass: Multi-span concrete girder bridge in a T-bridge/MSE wall ramp (for I-77 SB on-ramp) configuration
 - I-77 SB off-ramp: curved steel girder flyover
- Multiple MSE walls anticipated for bridge abutments and ramp geometry

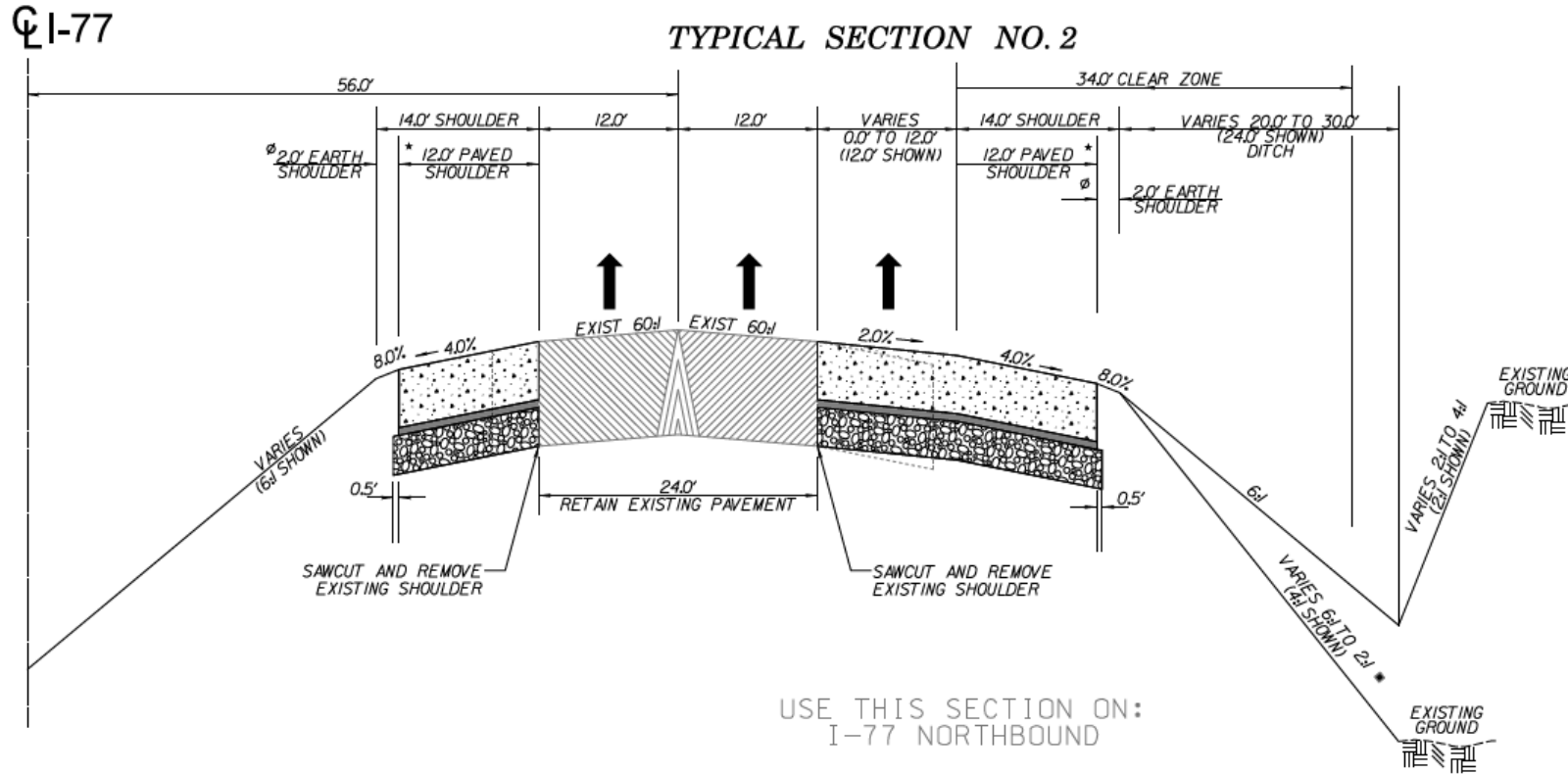
Structures

- Complex Bridge Independent Peer Review will be included for qualifying components (e.g. curved steel girders)
- No unique aesthetic treatments will be applied to bridges/walls. Standard SCDOT final finish and wall panel form-liner.
- Prep Deliverables: Conceptual Bridge Plans for all 3 vehicular bridges

Roadway

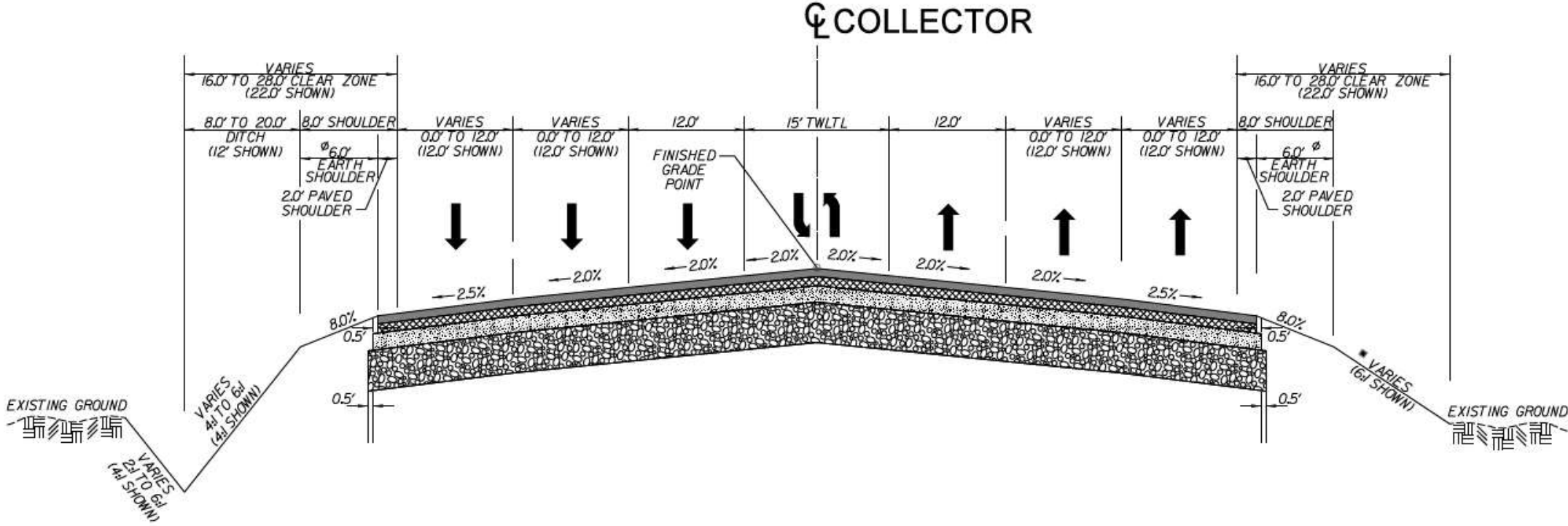
- 30% Preliminary Plans to be provided by prep team for proposed new interchange.
- No improvements are anticipated at Exit 24 (US 21) or Exit 27 (Blythewood Road) as part of this project.
- Widening to the outside for I-77 Northbound, ramp tie-in construction, & full depth shoulder replacement
- I-77 Southbound anticipates ramp tie-in construction & full depth shoulder replacement.
- Scout grading plan will be provided within work area to understand site grading.
- Set typical sections and tie points for Community Road (north & south of the new interchange) to ensure seamless transition between adjacent projects.
- New connector road from Community Road to US 21.
- Relocation of US 21.

I-77 Northbound



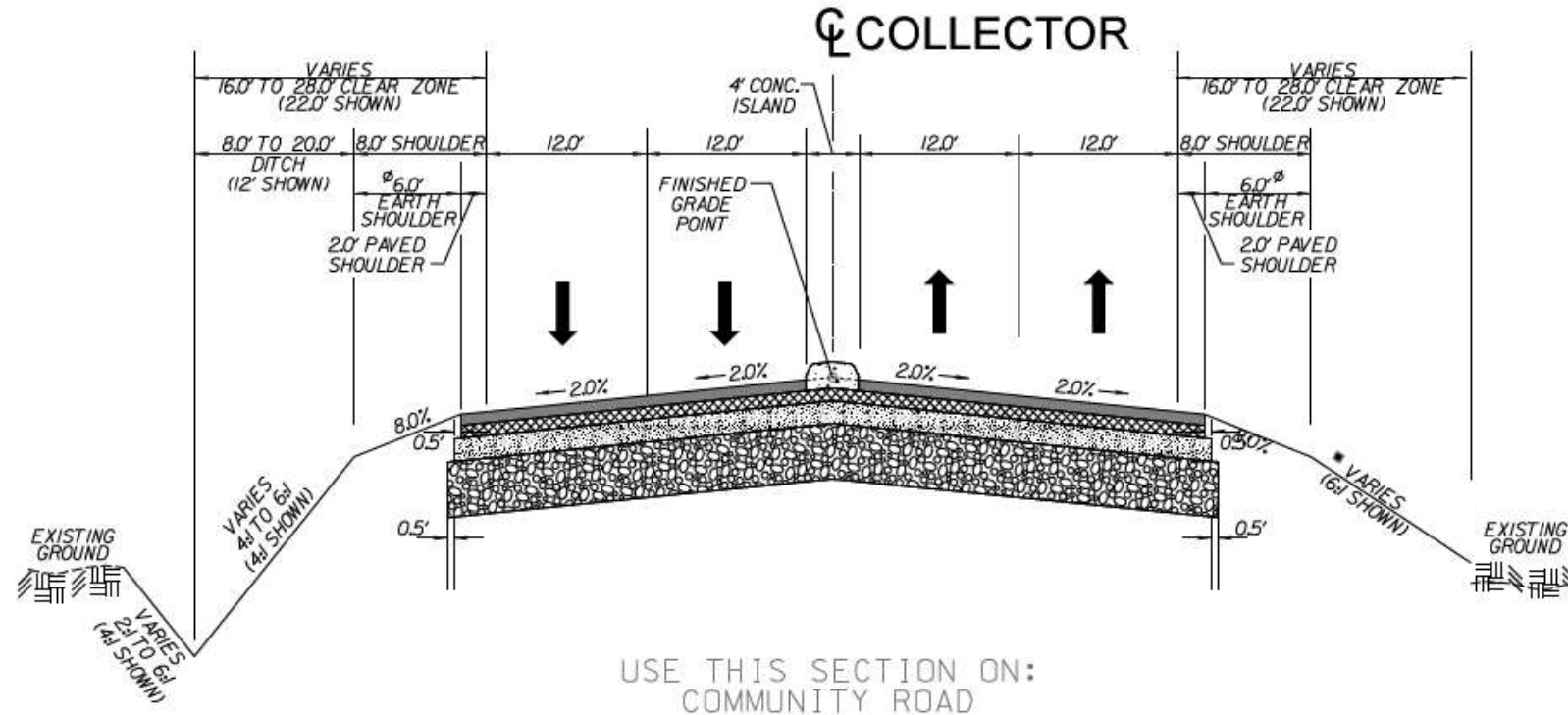
- Widen from existing 3rd lane drop (north of US 21) to Blythewood Road Exit.
- Full depth replacement of inside and outside existing shoulders.
- Ramp accel & decel lanes per approved IJR.

Community Road - South



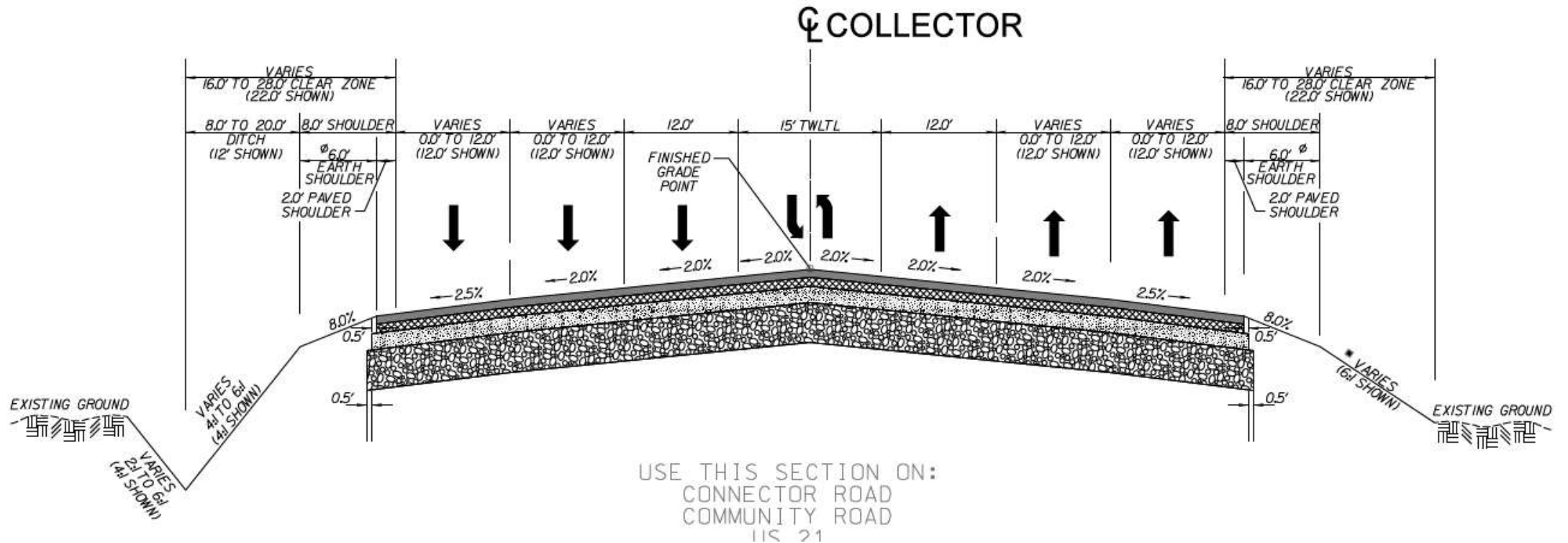
- South of the interchange, Community Road will be widened to accommodate a 5-lane section. Set end point to tie into adjacent project.

Community Road - North



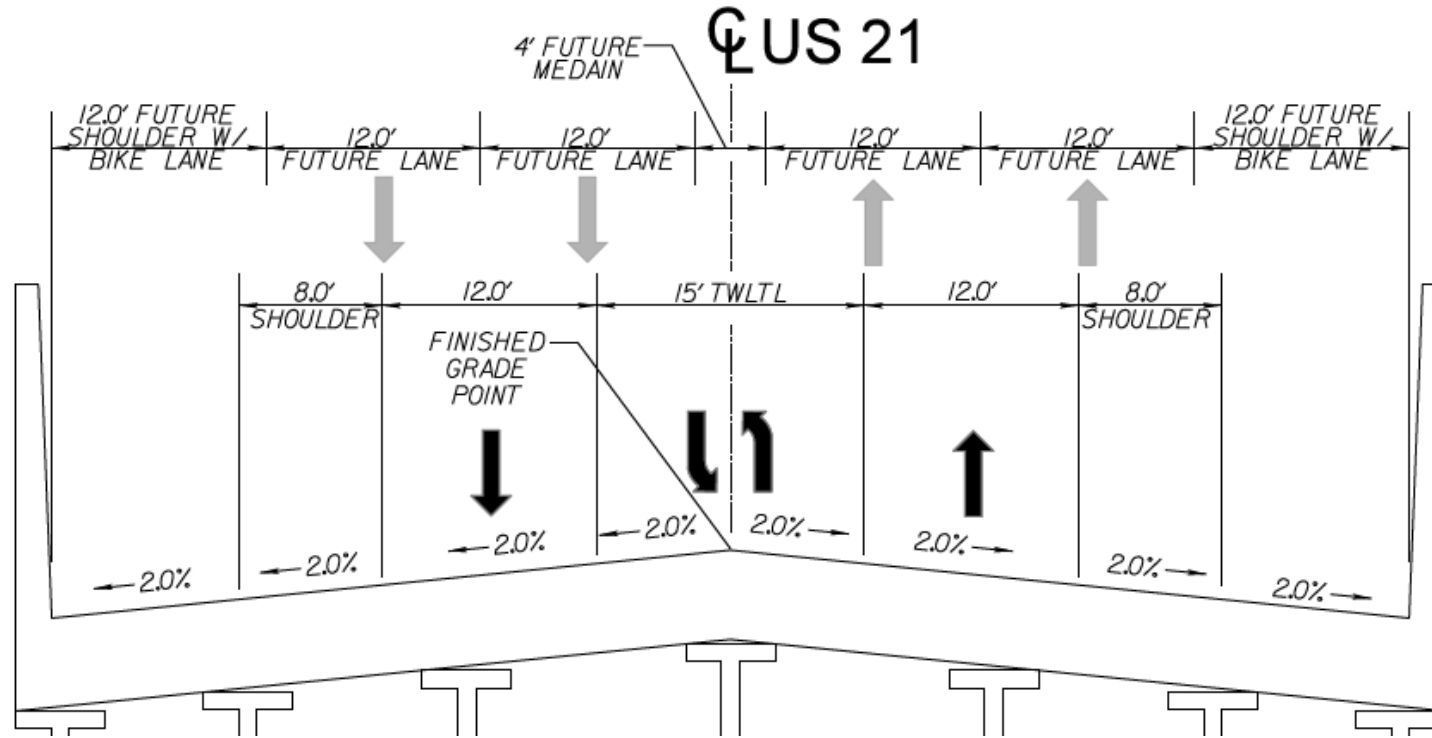
- North of the interchange, Community Road will be widened to accommodate a 4-lane section with a 4' median concrete island. Set end point to tie into adjacent project.

US 21 Connector Road



- 5-lane new location roadway connection from Community Road to US 21 (Reloc.).

US 21 Relocation



- Relocate existing US 21 to bridge over new RR spur with a 3-lane section.

Geotechnical

- Significant subsurface investigation prep scope being completed. Number of borings/soundings are close to meeting GDM requirements, specifically for the bridge locations, though some supplemental work will still be required.
- Very dense Upper Coastal Plain and residual Piedmont soils are being encountered in the upper 10 to 20 feet of the subsurface profile at bridge locations.

Hydrology

- No CLOMR/LOMR process anticipated with current alternative
- SCOUT site development has resubmitted their CLOMR for Beasley Creek
- Pre/Post mitigation with additional impervious area expected
- Large ditches may be warranted with a need for additional Right of Way
- Pipe/Culvert Inspections are ongoing and SCDOT will provide information when complete

Environmental

- USACE 404 Permit issued in December
- Mitigation – provided by Dept of Commerce and Richland County
- Permit Modification – no increases in impacts, opportunities for further avoidance and minimization
- FONSI approval by FHWA in January—covers interchange (IJR) and railroad bridge
- Tri-Color Bats—FWS listing TBD; SCDOT conducted studies and will cover re-eval
- Relocations– 2 business relocations accounted for in FONSI
- Noise– No walls anticipated
- DB Team responsibilities

Utilities

Preliminary Utility Report and SUE information will be provided.

SCDOT ITS will not be the responsibility of the Design Build Team.

Attempting to avoid the Transmission lines along US 21.

Traffic

Interchange Justification Report with supporting documentation will be provided.

Right of Way

Conceptual Plans with proposed ROW will be provided at Final RFP.

Incentivize ROW avoidance on US 21.

Railroad

Railroad Agreement for US 21 overpass

NSRR Spur is not a part of the project, only the Bridge Structure which will be Bid-Build.

Road and Bridge plans will be provided.

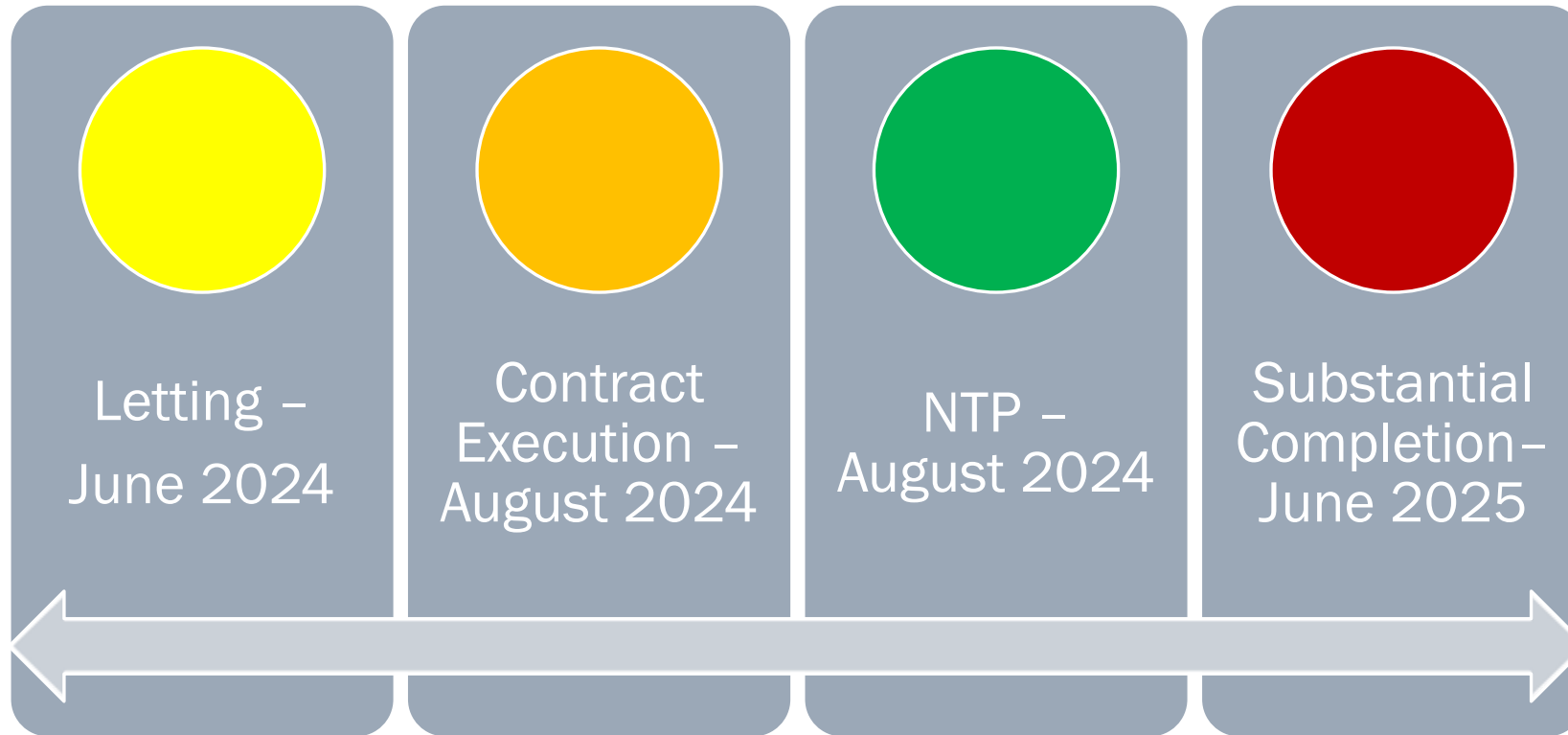
Anticipated Project Information

- Survey
- Hazardous Materials
- Hydrology
- Structures
- Roadway
- Utilities
- Environmental
- Geotech
- Traffic

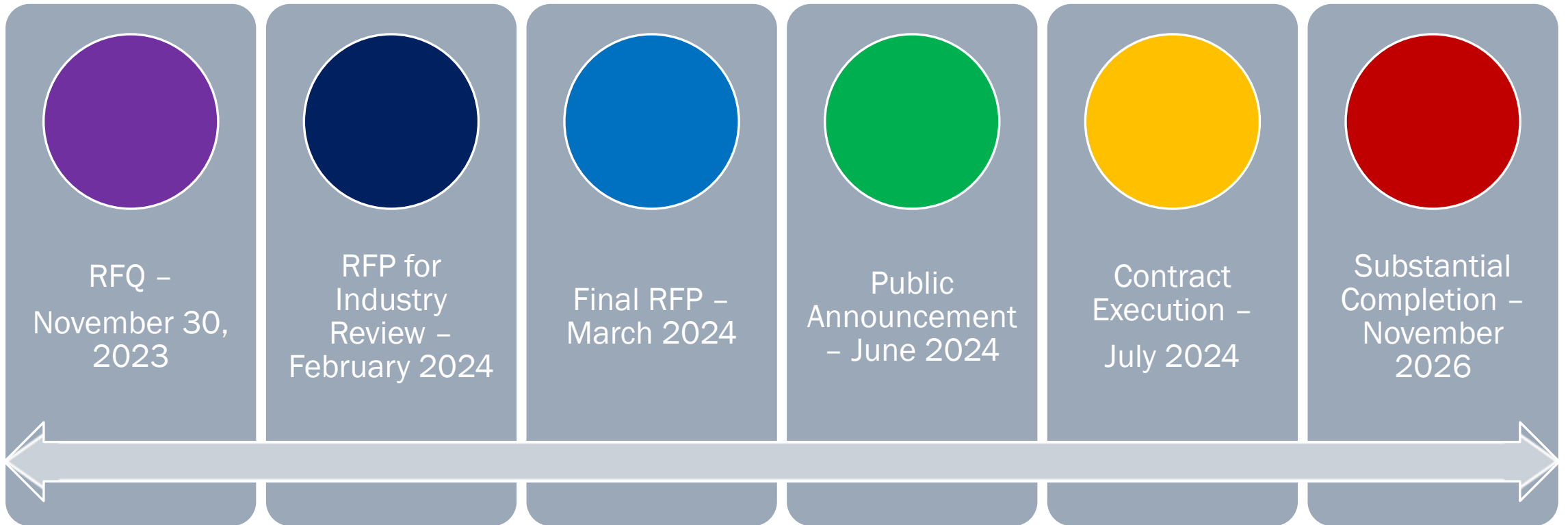
Anticipated Procurement Type

- Interchange Project
 - Two Phase
 - ATCs
 - Best Value with weighted criteria
 - DBE Goal
 - Stipends
- Railroad Bridge
 - Bid-Build

Anticipated Rail Bridge Project Schedule



Anticipated DB Project Schedule



Questions / Discussion



#ProgressisourPriority

Brooks Bickley P.E., Associate D.B.I.A

Assistant Program Manager

P 803.737.4685 **M** 803.240.5187 **E** BickleyBJ@scdot.org

955 Park Street, P.O. Box 191, Columbia, SC 29202-0191

LET 'EM WORK. LET 'EM LIVE.