

UTILITY DATA

POLE DATA

FED. RD. DIV. NO.	STATE	COUNTY	PROJECT ID	FIN. NO.	SHEET NO.
3	S.C.	BEAUFORT	20.020802	PC020802	0.03

UTILITY	ROUTE / RD	STATION RANGE	OFFSET RANGE	ITEM IN PLACE	OWNERSHIP	REMARKS / MISC INFORMATION
TV1-F	US 21			FIBER OPTIC	COMCAST	
TV1-F	US 21			FIBER OPTIC DUCT	COMCAST	
TV1-C	US 21			CABLE	COMCAST	
TV1-C	HARBOR DR.			CABLE	COMCAST	
TV1-C	HARBOR KEY DR.			CABLE	COMCAST	
T1-C	US 21			CABLE	CENTURY LINK	
T1-F	US 21			FIBER OPTIC	CENTURY LINK	
T1-C	US 21			1" CABLE	CENTURY LINK	(AATFI)
T1-F	US 21			FIBER OPTIC DUCT	CENTURY LINK	(AATFI)
T1-F	US 21			FIBER OPTIC DUCT	CENTURY LINK	
T1-C	GAS FISH CO. RD.			CABLE	CENTURY LINK	
T1-C	HARBOR DR.			CABLE	CENTURY LINK	
T1-F	HARBOR DR.			FIBER OPTIC DUCT	CENTURY LINK	
T1-C	HARBOR KEY DR.			CABLE	CENTURY LINK	
FS1-4P	HARBOR KEY DR.			4" PLASTIC	HARBOR ISLE UTILS.	LIFT STATION NEARBY
W1-6AC	US 21			6" ASBESTOS CEMENT	FRIPP ISLAND P.U.	(AATFI)
W1-10P	US 21			10" PLASTIC	FRIPP ISLAND P.U.	
W1-8DI	US 21			8" DUCTILE IRON	FRIPP ISLAND P.U.	WATER VAULT
W1-6DI	US 21			6" DUCTILE IRON	FRIPP ISLAND P.U.	SUSPENDED FROM BRIDGE (AATFI)
W1-10DI	US 21			10" DUCTILE IRON	FRIPP ISLAND P.U.	SUSPENDED FROM BRIDGE
W1	US 21			UNKNOWN	FRIPP ISLAND P.U.	
W2	US 21			UNKNOWN	BJWSA	
W2-10P	US 21			10" PLASTIC	BJWSA	
W2-10DI	US 21			10" DUCTILE IRON	BJWSA	WATER VAULT
W3	HARBOR KEY DR.			UNKNOWN	HARBOR ISLE UTILS.	
W3-10P	HARBOR KEY DR.			10" PLASTIC	HARBOR ISLE UTILS.	
E1	US 21			6" PLASTIC DUCT	SCE&G (DISTRIBUTION)	
E1	US 21			CABLE	SCE&G (DISTRIBUTION)	
E1	US 21			DUCT	SCE&G (DISTRIBUTION)	
E1	HARBOR DR.			CABLE	SCE&G (DISTRIBUTION)	
E1	HARBOR KEY DR.			CABLE	SCE&G (DISTRIBUTION)	
UNK	US 21			UNKNOWN	UNKNOWN	
UNK	US 21			1 1/2" CABLE	UNKNOWN	

POLE	ROUTE / RD	STATION	OFFSET	OWNER	POLE DATA					ATTACHMENTS	REMARKS / MISC NOTES
					OWNER No	HEIGHT	DIAMETER	MATERIAL	ANCHOR		
P001	US 21			SCE&G	E1	32'	9"	WOOD		(3) TRANSFORMERS	
P002	US 21			SCE&G	E1	29'	9"	WOOD	2	LIGHT	
P003	US 21			SCE&G	E1	36'	10"	WOOD		LIGHT	
P004	US 21			SCE&G	E1	33'	10"	WOOD		LIGHT / TRANSFORMER	
P005	US 21			SCE&G	E1	38'	10.5"	WOOD			
P006	US 21			SCE&G	E1	40'	11.5"	WOOD	6	LIGHT	
P007	US 21			SCE&G	E1	42'	13"	WOOD	1		
P008	US 21			SCE&G	E1	44'	12"	WOOD		ANTENNA	
P009	US 21			SCE&G	E1	14'	7"	WOOD			
P010	US 21			SCE&G	E1	50'	13"	WOOD	7	TRANSFORMER	
P011	US 21			SCE&G	E1	42'	11"	WOOD		LIGHT	
P012	US 21			SCE&G	E1	44'	N/A	WOOD	7	LIGHT	
P013	US 21			SCE&G	E1	38'	11"	WOOD			
P014	US 21			SCE&G	E1	54'	15"	METAL	8		
P015	US 21			SCE&G	E1	77'	N/A	METAL			
P016	US 21			SCE&G	E1	146'	N/A	METAL			
P017	US 21			SCE&G	E1	146'	N/A	METAL			
P018	US 21			SCE&G	E1	96'	N/A	METAL			
P019	US 21			SCE&G	E1	93'	15"	METAL	8		
P020	US 21			SCE&G	E1	48'	13"	WOOD		(2) TRANSFORMERS / E-BOX	
P021	US 21			SCE&G	E1	64'	13"	WOOD	10	LIGHT	
P022	US 21			SCE&G	E1	29'	9"	WOOD	1	LIGHT / TRANSFORMER	
P023	US 21			SCE&G	E1	55'	13"	WOOD	1		
P024	US 21			SCE&G	E1	37'	10"	WOOD	1		
P025	US 21			SCE&G	E1	36'	10"	WOOD	2		
P026	US 21			SCE&G	E1	44'	11"	WOOD	3		
P027	US 21			SCE&G	E1	17'	8.5"	WOOD			
P028	US 21			SCE&G	E1	32'	9.5"	WOOD			
P029	US 21			SCE&G	E1	34'	10"	WOOD	1		
P030	US 21			SCE&G	E1	36'	10"	WOOD	2		
P031	US 21			SCE&G	E1	35'	10"	WOOD	2		
P032	US 21			SCE&G	E1	36'	10"	WOOD	2		
P033	US 21			SCE&G	E1	37'	10"	WOOD		TRANSFORMER	
P034	US 21			SCE&G	E1	36'	10"	WOOD			
P035	US 21			SCE&G	E1	36'	10"	WOOD			
P036	US 21			SCE&G	E1	39'	11"	WOOD			
P037	US 21			SCE&G	E1	36'	10"	WOOD	2		
P038	US 21			SCE&G	E1	32'	10"	WOOD	1	(3) TRANSFORMERS / METER	

UTILITY & POLE DATA TABLE DESCRIPTION

COLUMN	DESCRIPTION	EXAMPLE	COLUMN	DESCRIPTION	EXAMPLE
UTILITY	a) Reference the Utility Unique Identifier (UUI) b) Reference Sewer Manhole Number (SMN) c) Reference Utility Information Tags (UIT)	E1, G1, OH15 S001, SMH-02 U001, U05	STATION RANGE	a) Reference the station of the begin & end of linear utility b) Reference the station location of utility appurtenance c) Reference the station location of manhole	01+23 - 45+67 01+23 01+23
POLE	Reference the Utility Pole ID Number	P001, P25	OFFSET RANGE	a) Reference the offset of the begin & end of linear utility b) Reference the offset location of utility appurtenance c) Reference the offset location of manhole	15R - 15R 25L 25L
ALIGNMENT ROUTE	Reference the Alignment used for stationing Use design alignments when available	MAIN ST. MAIN ST RELOC	ITEM IN PLACE	a) Reference utility type, size, & material b) Reference the utility appurtenance type c) Reference manhole	TELEPHONE, COPPER / GAS 6" DI U/G PEDESTAL SEWER MH
RD	*All geometric data used will be referenced to the project datum*		REMARKS MISC NOTES	a) Further details including capacity, etc. b) List Sewer rims and invert elevations c) List details and desc, sizes, record information, etc.	RIM=123.45, INV IN=123.45 INV OUT=123.45 RECORDS SHOW INFO

REV. NO.	BY	DATE	DESCRIPTION OF REVISION
4			
3			
2			
1			
1			
1			

SOUTH CAROLINA
DEPARTMENT OF TRANSPORTATION
ROAD DESIGN
COLUMBIA, S.C.

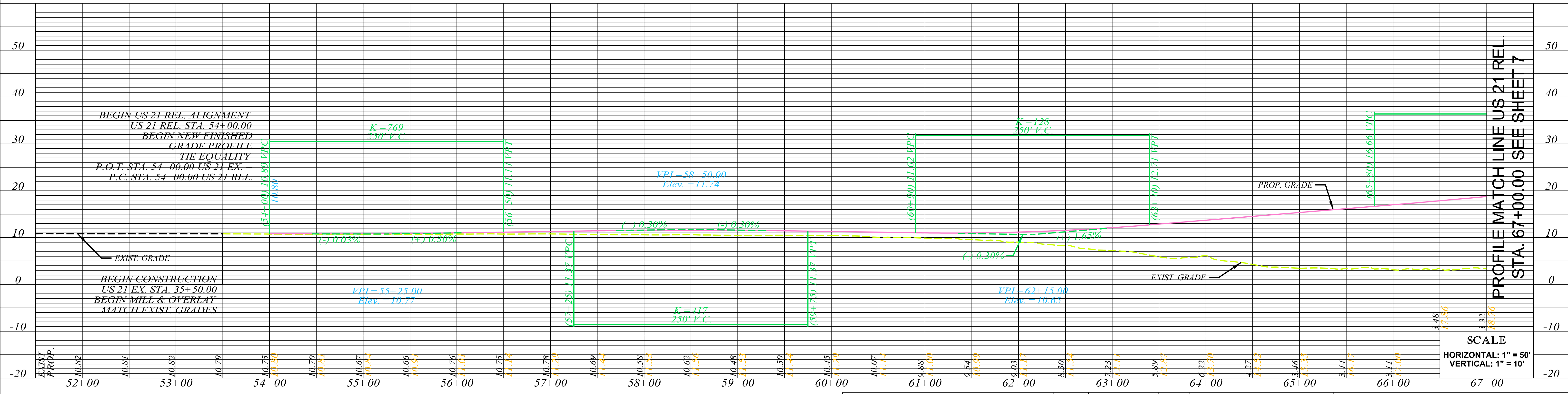
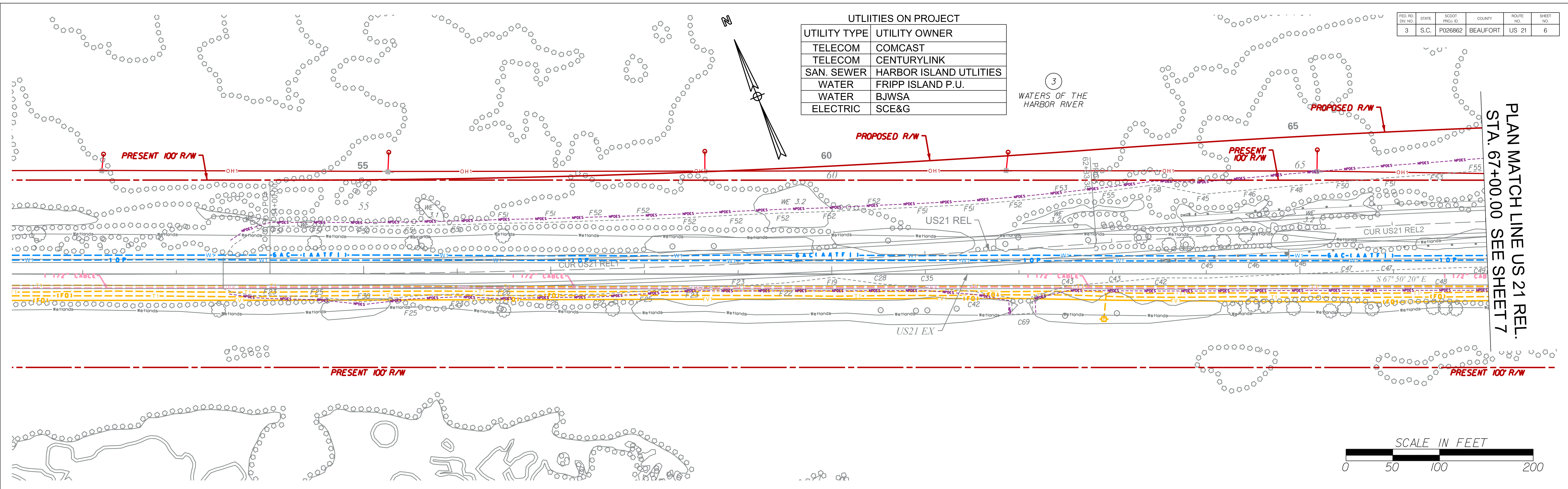
UTILITY AND POLE DATA SHEET

SCALE 1" = 50' RTE. US-21 DWG. NO. PN1

FED. RD. DIST. NO.	STATE	SCOTT PROJ. ID.	COUNTY	ROUTE NO.	SHEET NO.
3	S.C.	P026862	BEAUFORT	US 21	6

UTILITIES ON PROJECT

UTILITY TYPE	UTILITY OWNER
TELECOM	COMCAST
TELECOM	CENTURYLINK
SAN. SEWER	HARBOR ISLAND UTILITIES
WATER	FRIPP ISLAND P.U.
WATER	BJWSA
ELECTRIC	SCE&G



SO-DEEP | SAM NC
A SAM COMPANY
2800-154 Sumner Boulevard, Raleigh, NC 27616
Ofc (919) 878-7466 Fax (919) 790-1704 www.sodeep.com

CONCEPTUAL PLANS
DO NOT USE FOR CONSTRUCTION

REV. NO.	BY	DATE	DESCRIPTION OF REVISION

SOUTH CAROLINA
DEPARTMENT OF TRANSPORTATION
ROAD DESIGN COLUMBIA, S.C.

BEAUFORT COUNTY
US 21 (SEA ISLAND PARKWAY)
HARBOR RIVER BRIDGE REPLACEMENT
PLAN & PROFILE: US 21
STA. 52+00.00 TO STA. 67+00.00

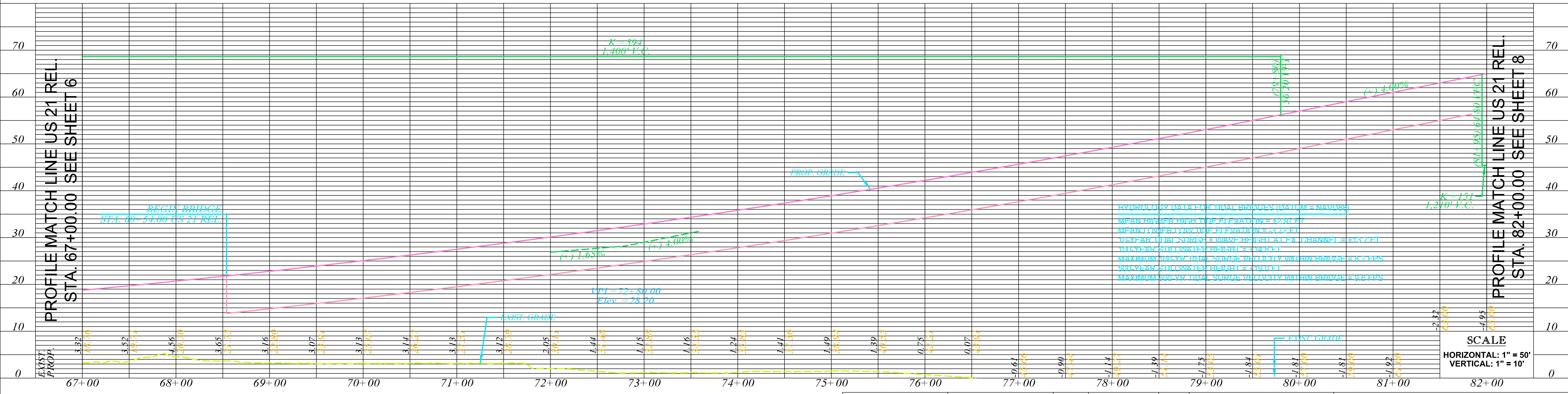
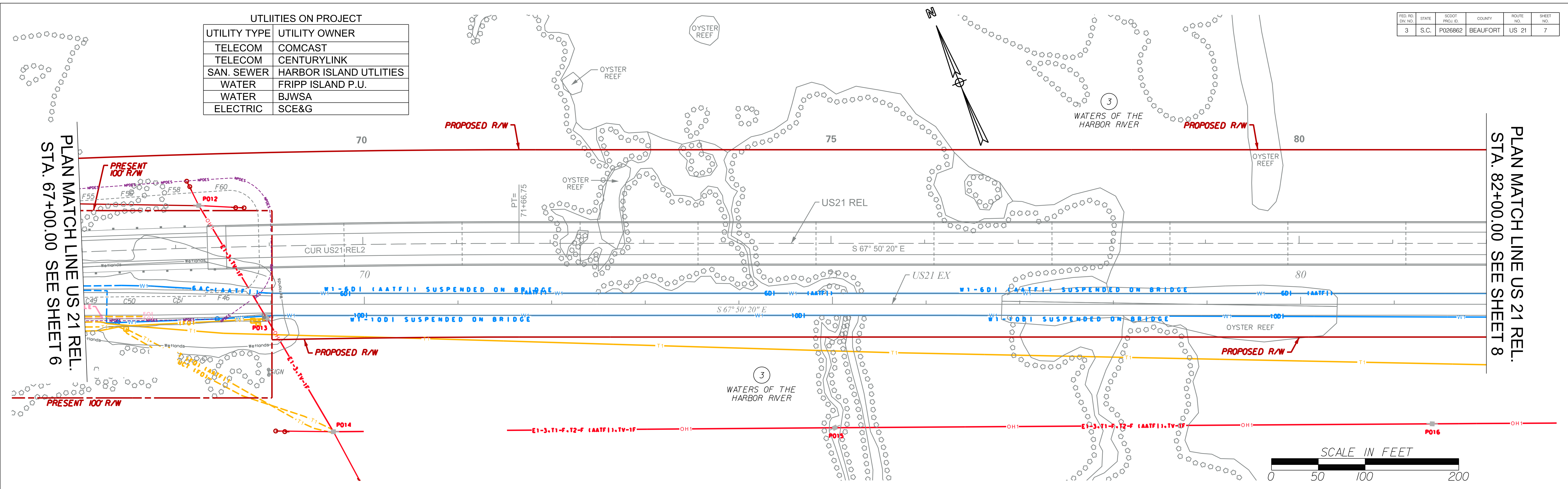
SCALE: 1"=50' RTE. US 21 DWG. PP6

HDR
HDR Engineering Inc.
of the Carolinas
4400 Leeds Avenue, Suite 450
North Charleston, SC 29405-7547
843-414-3700

NOTE:
SEE STAKING PLAN FOR ALIGNMENT CONTROL

UTILITIES ON PROJECT	
UTILITY TYPE	UTILITY OWNER
TELECOM	COMCAST
TELECOM	CENTURYLINK
SAN. SEWER	HARBOR ISLAND UTILITIES
WATER	FRIPP ISLAND P.U.
WATER	BJWSA
ELECTRIC	SCE&G

FED. RD. DIST. NO.	STATE	SCOTT PROJ. ID.	COUNTY	ROUTE NO.	SHEET NO.
3	S.C.	P026862	BEAUFORT	US 21	7



HDR Engineering Inc.
of the Carolinas
4400 Leeds Avenue, Suite 450
North Charleston, SC 29405-7547
843-414-3700

NOTE:
SEE STAKING PLAN FOR ALIGNMENT CONTROL

SO-DEEP | SAM NC
A SAM COMPANY
2800-154 Sumner Boulevard, Raleigh, NC 27616
Ofc (919) 878-7466 Fax (919) 790-1704 www.sodeep.com

CONCEPTUAL PLANS
DO NOT USE FOR CONSTRUCTION

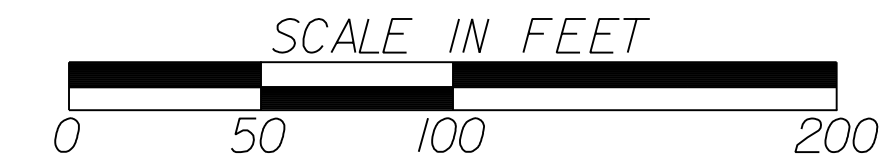
REV. NO.	BY	DATE	DESCRIPTION OF REVISION

SOUTH CAROLINA
DEPARTMENT OF TRANSPORTATION
ROAD DESIGN COLUMBIA, S.C.

BEAUFORT COUNTY
US 21 (SEA ISLAND PARKWAY)
HARBOR RIVER BRIDGE REPLACEMENT
PLAN & PROFILE: US 21
STA. 67+00.00 TO STA. 82+00.00

SCALE: 1"=50' RTE. US 21 DWG. PPT

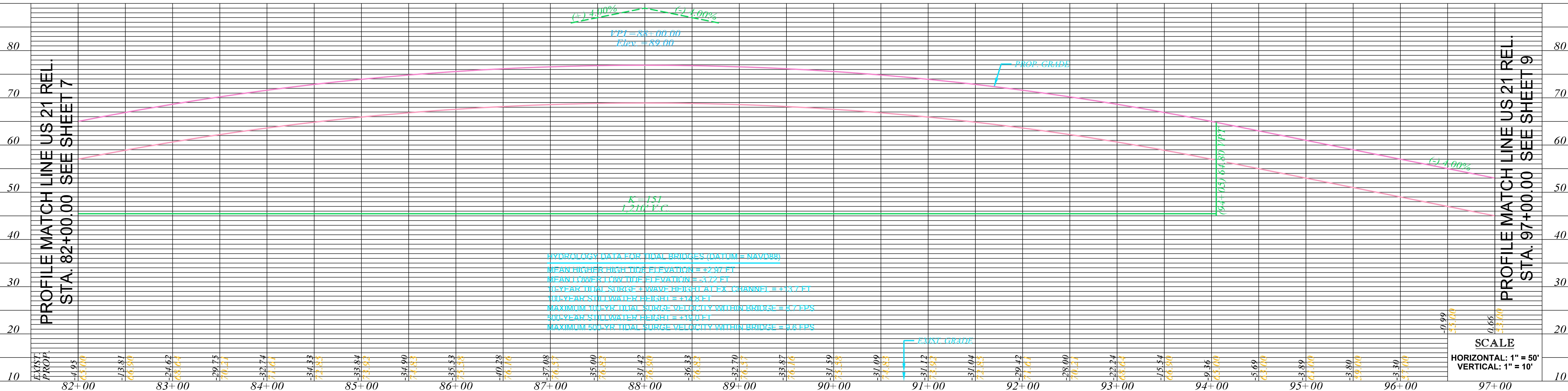
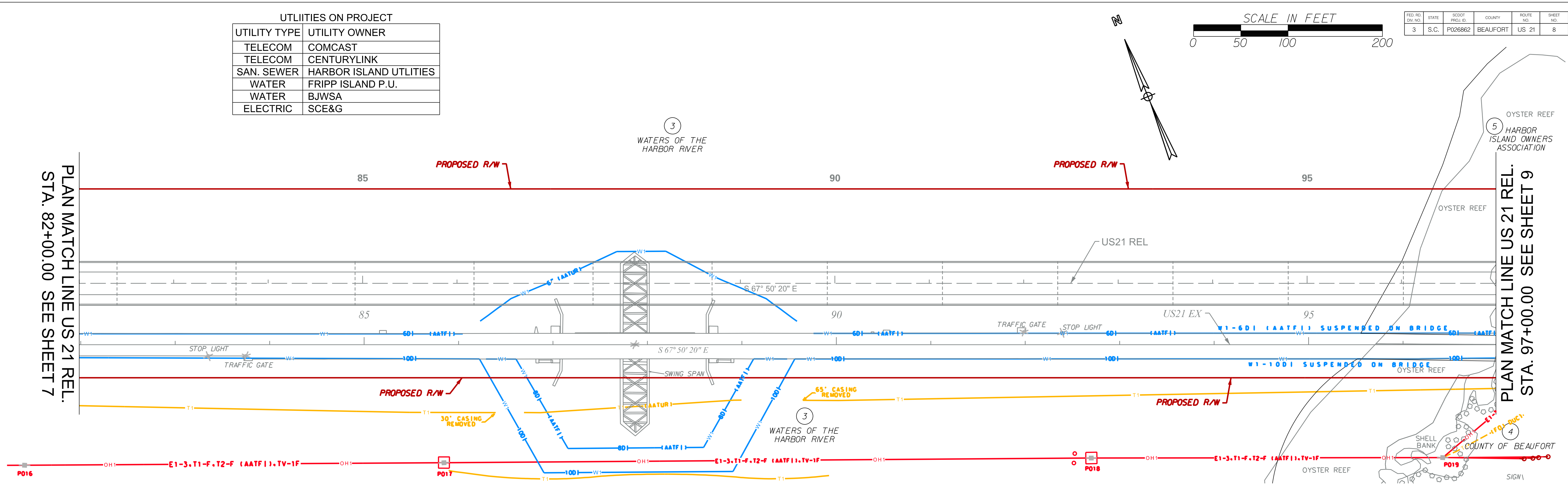
UTILITIES ON PROJECT	
UTILITY TYPE	UTILITY OWNER
TELECOM	COMCAST
TELECOM	CENTURYLINK
SAN. SEWER	HARBOR ISLAND UTILITIES
WATER	FRIPP ISLAND P.U.
WATER	BJWSA
ELECTRIC	SCE&G



FED. RD. DIST. NO.	STATE	SCOTT PROJ. ID.	COUNTY	ROUTE NO.	SHEET NO.
3	S.C.	P026862	BEAUFORT	US 21	8

PLAN MATCH LINE US 21 REL.
STA. 82+00.00 SEE SHEET 7

PLAN MATCH LINE US 21 REL.
STA. 97+00.00 SEE SHEET 9



HYDROLOGY DATA FOR TIDAL BRIDGES (DATA FROM NAVD83)
 MAXIMUM HIGH TIDE ELEVATION = 57.87 FT
 MAXIMUM LOW TIDE ELEVATION = 37.77 FT
 MAXIMUM TIDAL SURGE + WAVE HEIGHT AT FX LOCATION = 4.77 FT
 MAXIMUM TIDAL SURGE + WAVE HEIGHT AT FX LOCATION = 4.77 FT
 MAXIMUM TIDAL SURGE VELOCITY WITHIN BRIDGE = 2.7 FPS
 300-YEAR STORM WAVE HEIGHT = 4.10 FT
 MAXIMUM 500-YR TIDAL SURGE VELOCITY WITHIN BRIDGE = 3.6 FPS

HDR Engineering Inc.
of the Carolinas
4400 Leeds Avenue, Suite 450
North Charleston, SC 29405-7547
843-414-3700

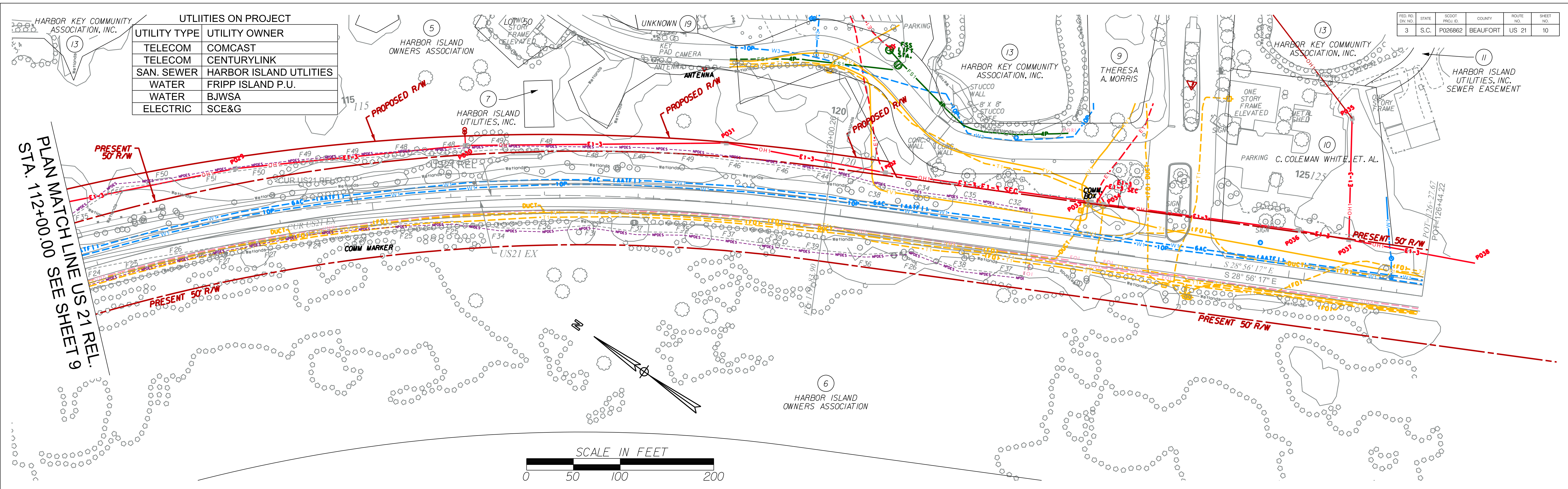
NOTE:
SEE STAKING PLAN FOR ALIGNMENT CONTROL

SO-DEEP | SAM NC, Inc.
A SAM COMPANY
2800-154 Sumner Boulevard, Raleigh, NC 27616
Ofc (919) 878-7466 Fax (919) 790-1704 www.sodeep.com

CONCEPTUAL PLANS
DO NOT USE FOR CONSTRUCTION

REV. NO.	BY	DATE	DESCRIPTION OF REVISION

SOUTH CAROLINA
DEPARTMENT OF TRANSPORTATION
ROAD DESIGN COLUMBIA, S.C.
BEAUFORT COUNTY
US 21 (SEA ISLAND PARKWAY)
HARBOR RIVER BRIDGE REPLACEMENT
PLAN & PROFILE: US 21
STA. 82+00.00 TO STA. 97+00.00
SCALE: 1"=50' RTE. US 21 DWG. PP8

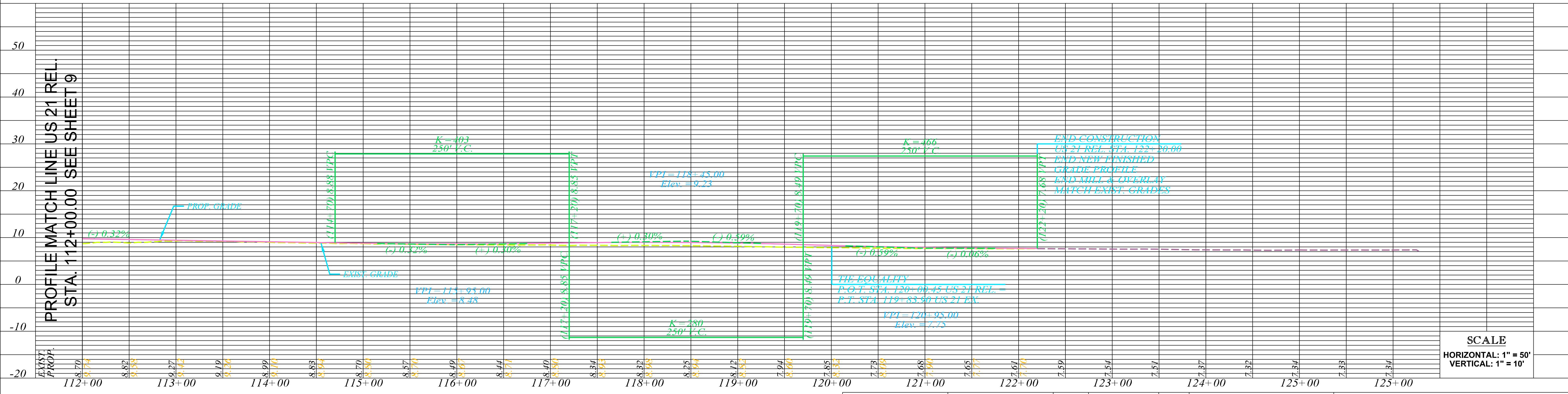
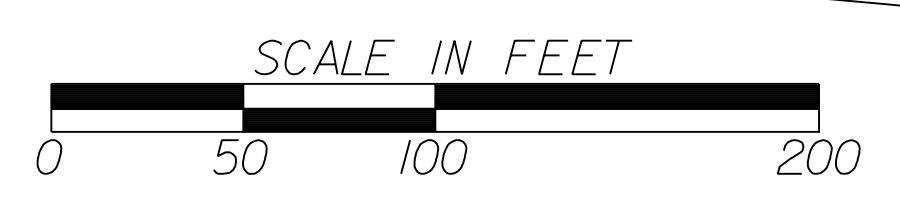


UTILITIES ON PROJECT

UTILITY TYPE	UTILITY OWNER
TELECOM	COMCAST
TELECOM	CENTURYLINK
SAN. SEWER	HARBOR ISLAND UTILITIES
WATER	FRIPP ISLAND P.U.
WATER	BJWSA
ELECTRIC	SCE&G

FED. RD. DIST. NO.	STATE	SCOTT PROJ. ID.	COUNTY	ROUTE NO.	SHEET NO.
3	S.C.	P026862	BEAUFORT	US 21	10

PLAN MATCH LINE US 21 REL. STA. 112+00.00 SEE SHEET 9



SCALE
HORIZONTAL: 1" = 50'
VERTICAL: 1" = 10'

HDR Engineering Inc.
of the Carolinas
4400 Leeds Avenue, Suite 450
North Charleston, SC 29405-7547
843-414-3700

NOTE:
SEE STAKING PLAN FOR ALIGNMENT CONTROL

SO-DEEP | SAM NC
SO-DEEP | SAM NC, Inc.
A SAM COMPANY
2800-154 Sumner Boulevard, Raleigh, NC 27616
Ofc (919) 878-7466 Fax (919) 790-1704 www.sodeep.com

CONCEPTUAL PLANS
DO NOT USE FOR CONSTRUCTION

REV. NO.	BY	DATE	DESCRIPTION OF REVISION

SOUTH CAROLINA
DEPARTMENT OF TRANSPORTATION
ROAD DESIGN COLUMBIA, S.C.

BEAUFORT COUNTY
US 21 (SEA ISLAND PARKWAY)
HARBOR RIVER BRIDGE REPLACEMENT
PLAN & PROFILE: US 21
STA. 112+00.00 TO STA. 126+44.22

SCALE: 1"=50' RTE.US 21 DWG.P10