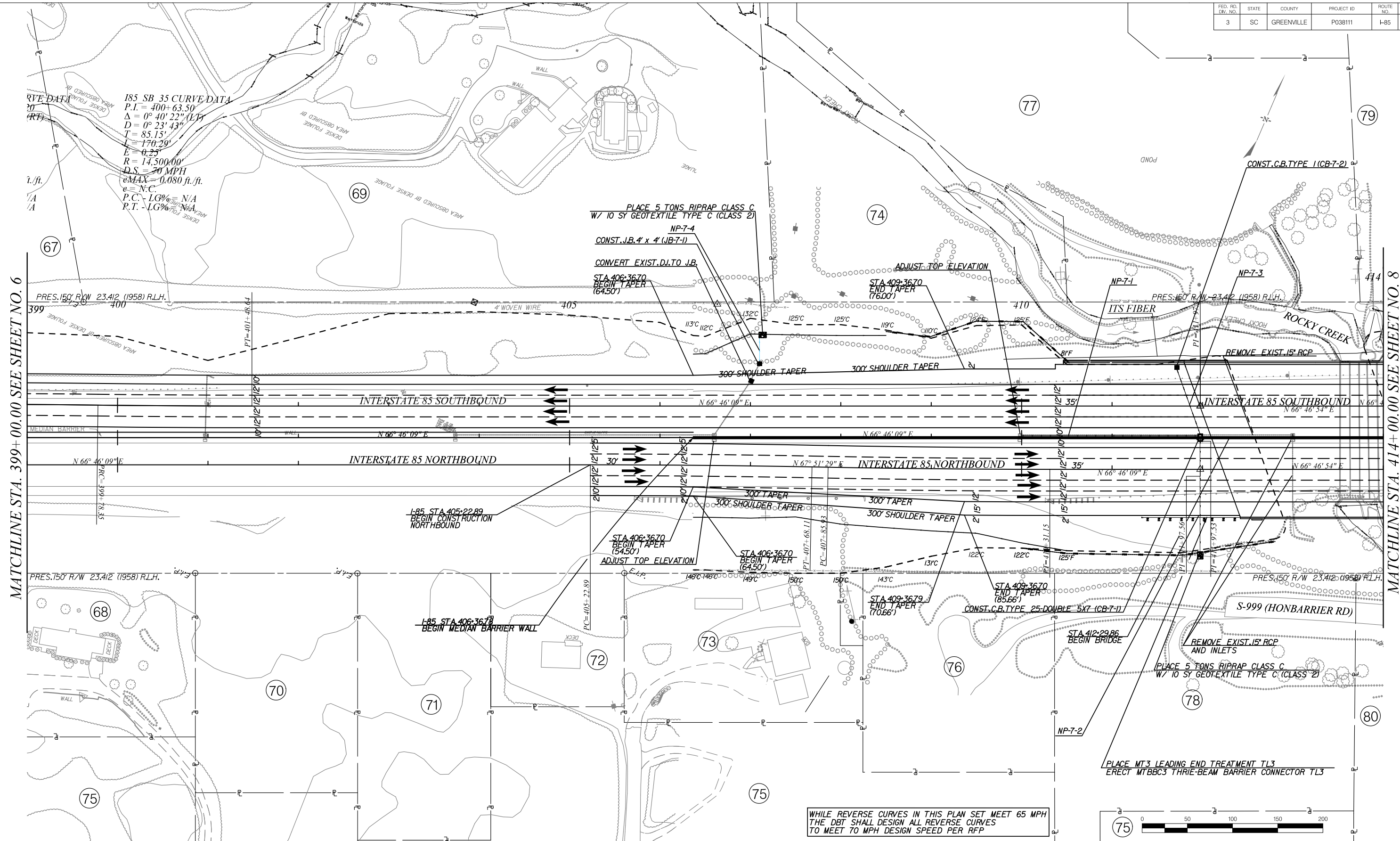


FED. RD. DIV. NO.	STATE	COUNTY	PROJECT ID	ROUTE NO.	SHEET NO.
3	SC	GREENVILLE	P038111	I-85	7



PRELIMINARY NOT FOR CONSTRUCTION PLANS

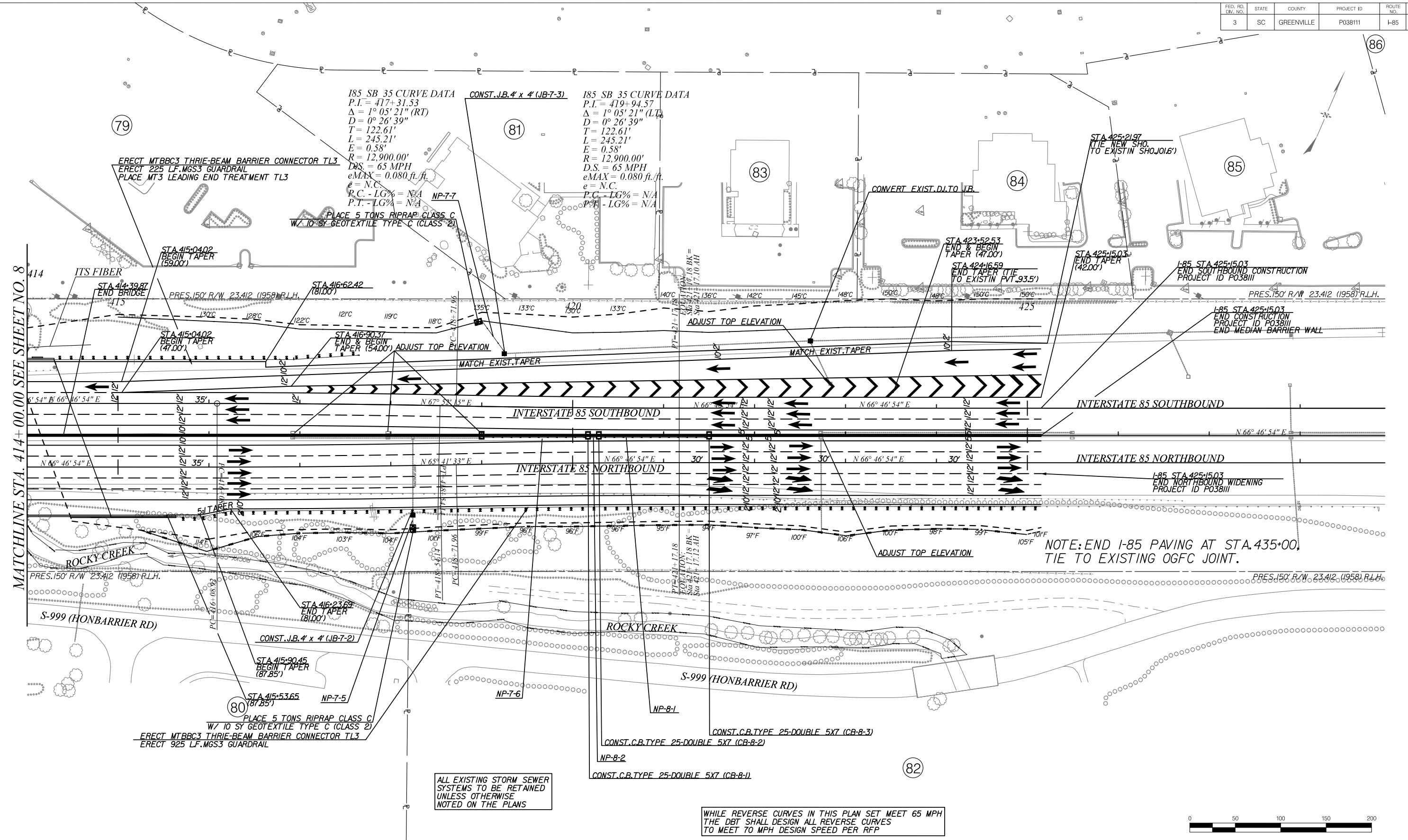
WHILE REVERSE CURVES IN THIS PLAN SET MEET 65 MPH THE DBT SHALL DESIGN ALL REVERSE CURVES TO MEET 70 MPH DESIGN SPEED PER RFP

4			
3			
2			
1			
REV. NO.	BY	DATE	DESCRIPTION OF REVISION
DESIGNED BY:		DATE	
DRAWN BY:		DATE	
CHECKED BY:		DATE	

SOUTH CAROLINA DEPARTMENT OF TRANSPORTATION
I-85 BRIDGE REPLACEMENT OVER ROCKY CREEK

PLAN SHEET
I-85 BRIDGE REPLACEMENT OVER ROCKY CREEK

SHEET 7 SCALE: 1" = 50'



MATCHLINE STA. 414+00.00 SEE SHEET NO. 8



PRELIMINARY NOT FOR CONSTRUCTION

4			
3			
2			
1			
REV. NO.	BY	DATE	DESCRIPTION OF REVISION
DESIGNED BY:		DATE	
DRAWN BY:		DATE	
CHECKED BY:		DATE	

SOUTH CAROLINA DEPARTMENT OF TRANSPORTATION
I-85 BRIDGE REPLACEMENT OVER ROCKY CREEK

PLAN SHEET
I-85 BRIDGE REPLACEMENT OVER ROCKY CREEK

SHEET 8 SCALE: 1" = 50'

ALL EXISTING STORM SEWER SYSTEMS TO BE RETAINED UNLESS OTHERWISE NOTED ON THE PLANS

WHILE REVERSE CURVES IN THIS PLAN SET MEET 65 MPH THE DBT SHALL DESIGN ALL REVERSE CURVES TO MEET TO MPH DESIGN SPEED PER RFP

