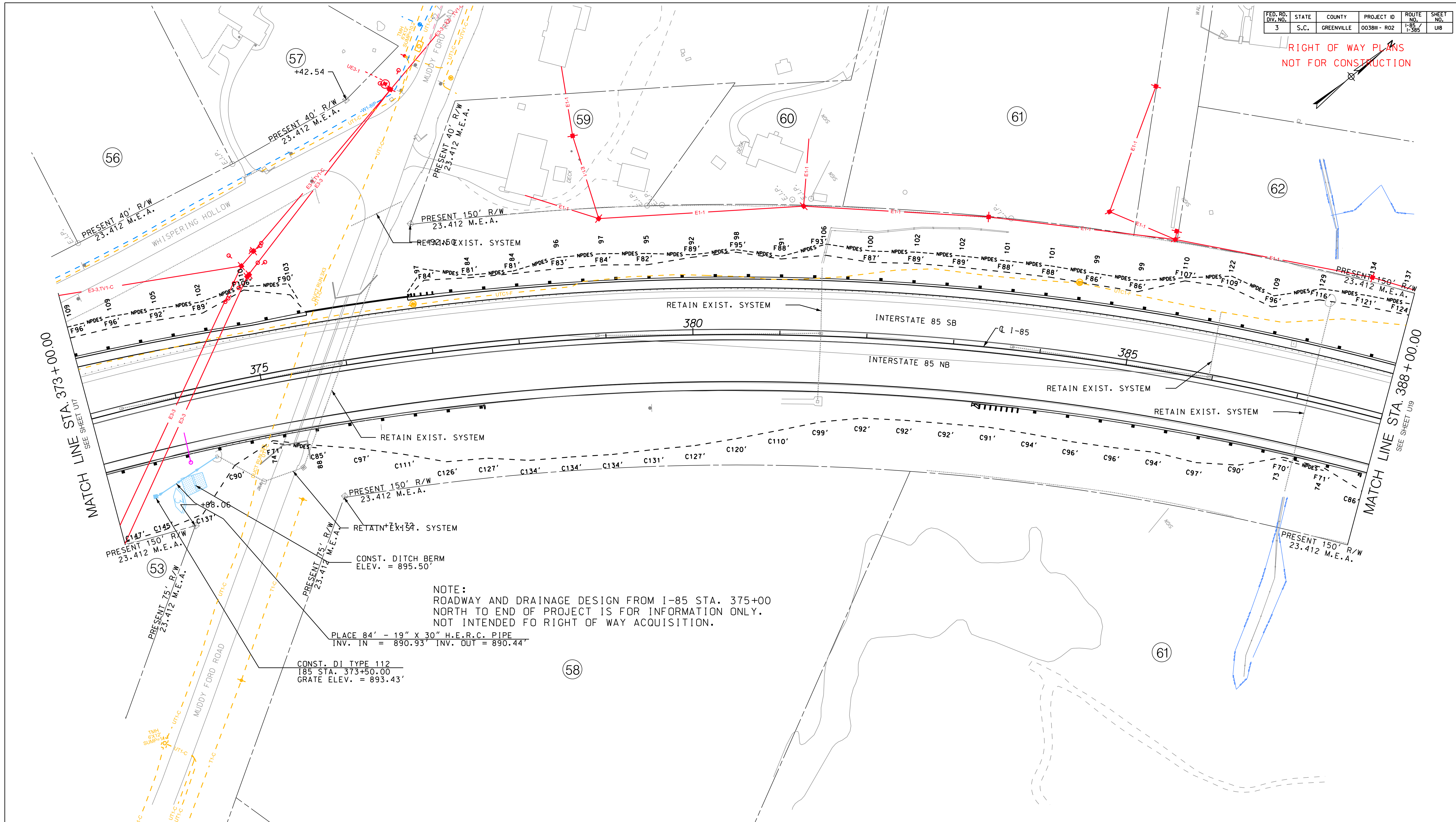


FED. RD. DIV. NO.	STATE	COUNTY	PROJECT ID	ROUTE NO.	SHEET NO.
3	S.C.	GREENVILLE	0038H - R02	I-85 / I-385	118

RIGHT OF WAY PLANS  
NOT FOR CONSTRUCTION



NOTE:  
ROADWAY AND DRAINAGE DESIGN FROM I-85 STA. 375+00  
NORTH TO END OF PROJECT IS FOR INFORMATION ONLY.  
NOT INTENDED FOR RIGHT OF WAY ACQUISITION.

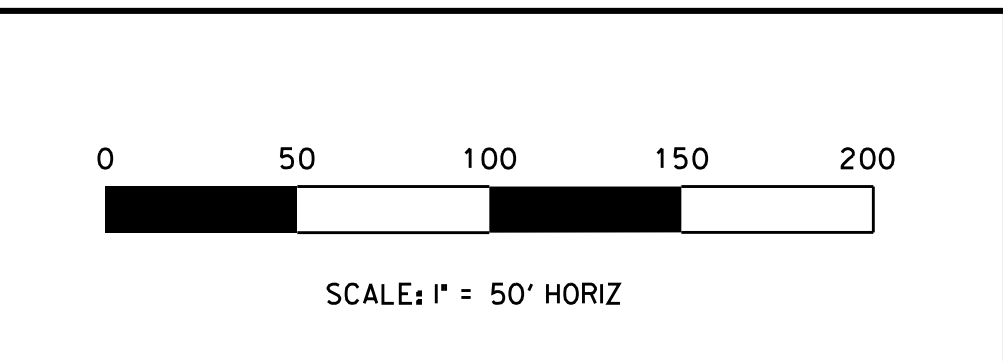
PLACE 84' - 19" X 30" H.E.R.C. PIPE  
INV. IN = 890.93' INV. OUT = 890.44'

CONST. DI TYPE 112  
I-85 STA. 373+50.00  
GRATE ELEV. = 893.43'

ID	TYPE	UTILITY	ID	TYPE	UTILITY
T1 UT1	PHONE/FIBER	AT&T DISTRIBUTION	TV1 UTV1	TV/FIBER	CHARTER COMMUNICATIONS
T3 UT3	FIBER	LEVEL 3 COMMUNICATIONS	W1	WATER	GREENVILLE WATER SYSTEM
T4 UT4	FIBER	TW TELECOM	SS1 FSS1	SEWER-TRANS	REWA (REWA)
T5 UT5	FIBER	PALMETTO NET	SS2 FSS2	GRAVITY SEWER	METROPOLITAN SEWER
T6 UT6	FIBER	VERIZON BUSINESS (MCI)	SS3 FSS3	GRAVITY SEWER	CITY OF GREENVILLE
T7 UT7	FIBER	TIME WARNER CABLE (TWT)	E1 UE1	E-DIST	DUKE ENERGY
T8 UT8	FIBER	SPIRIT TELECOM (SPT)	E2	E-TRANS	DUKE ENERGY
TC1 UTC1	FIBER	SCDOT	E3 UE3	E-DIST	LAURENS ELECTRIC COOP
TC2 UTC2	FIBER	FZJV / CITY OF GREENVILLE	G1	GAS	PIEDMONT NATURAL GAS

DESCRIPTION	BY	CHECKED

DRAWN BY : B.A.H.  
 DATE : 01/20/15  
 REVIEWED BY : B.G.N.  
 DATE : 01/21/15  
 APPROVED BY : B.G.F.  
 DATE : 01/21/15



SOUTH CAROLINA DEPARTMENT OF TRANSPORTATION

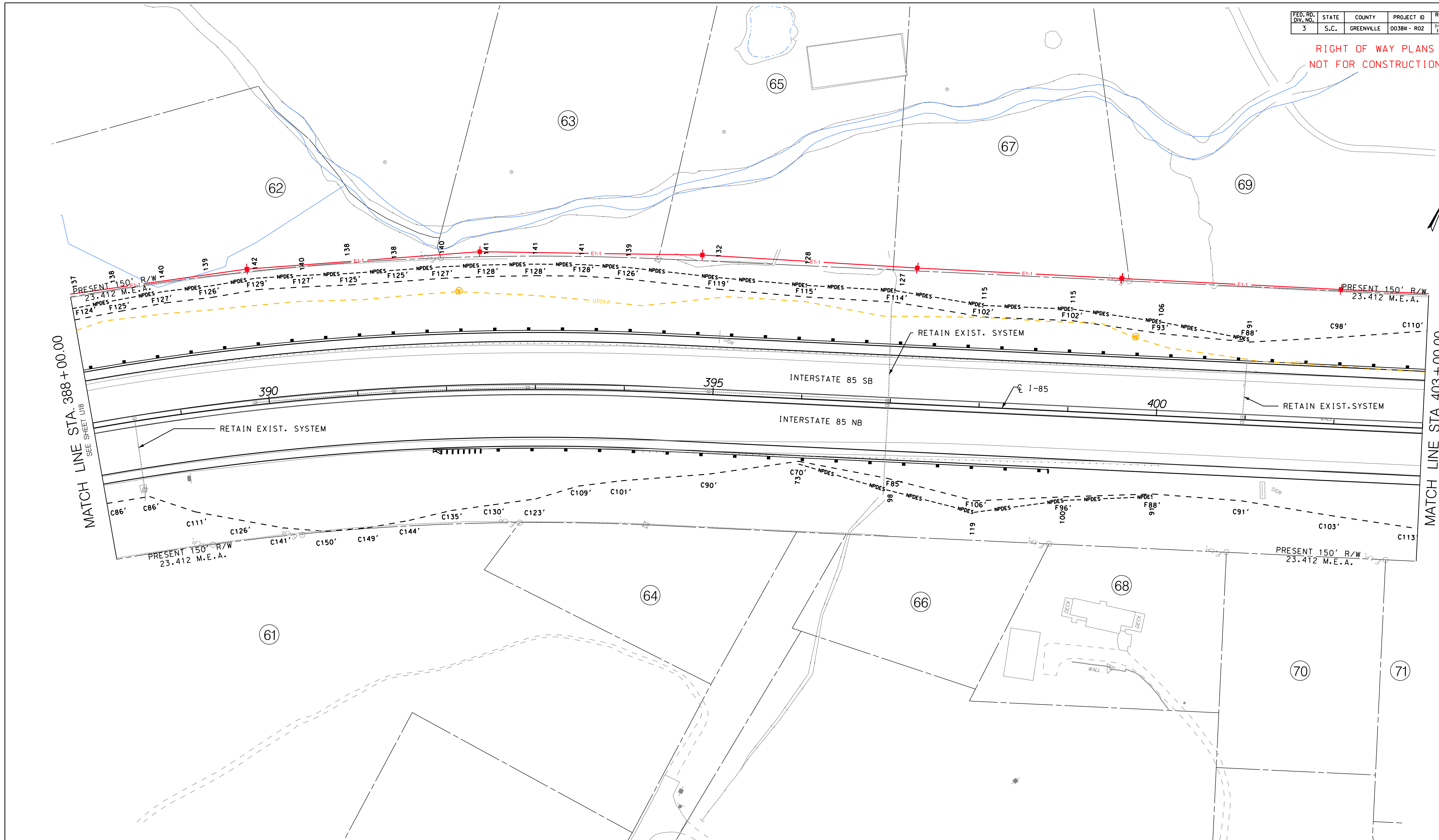
I-85 / I-385 INTERCHANGE

UTILITY PLAN SHEET  
 STA. 373+00.00 TO STA. 388+00.00



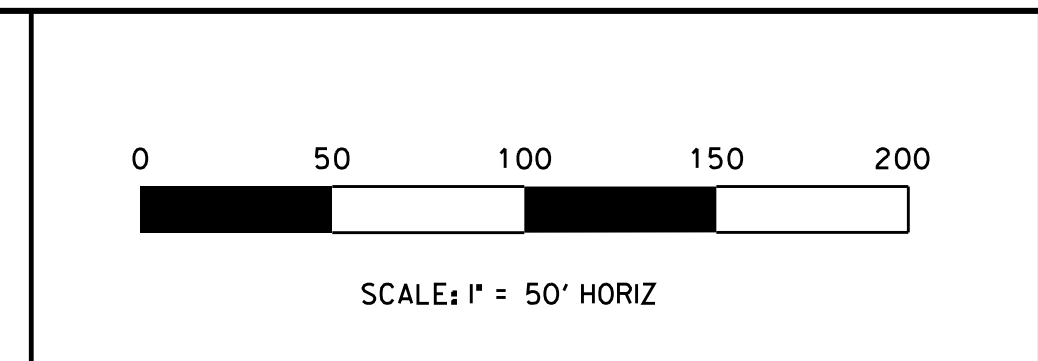
FED. RD. DIV. NO.	STATE	COUNTY	PROJECT ID	ROUTE NO.	SHEET NO.
3	S.C.	GREENVILLE	0038H - R02	I-85 / I-385	U9

RIGHT OF WAY PLANS  
NOT FOR CONSTRUCTION



ID	TYPE	UTILITY	ID	TYPE	UTILITY	DESCRIPTION	BY	CHECKED
T1 UT1	PHONE/FIBER	AT&T DISTRIBUTION	TV1 UTV1	TV/FIBER	CHARTER COMMUNICATIONS			
T3 UT3	FIBER	LEVEL 3 COMMUNICATIONS	W1	WATER	GREENVILLE WATER SYSTEM			
T4 UT4	FIBER	TW TELECOM	SS1 FSS1	SEWER-TRANS	REWA (REWA)			
T5 UT5	FIBER	PALMETTO NET	SS2 FSS2	GRAVITY SEWER	METROPOLITAN SEWER			
T6 UT6	FIBER	VERIZON BUSINESS (MC)	SS3 FSS3	GRAVITY SEWER	CITY OF GREENVILLE			
T7 UT7	FIBER	TIME WARNER CABLE (TWT)	E1 UE1	E-DIST	DUKE ENERGY			
T8 UT8	FIBER	SPIRIT TELECOM (SPT)	E2	E-TRANS	DUKE ENERGY			
TC1 UTC1	FIBER	SCDOT	E3 UE3	E-DIST	LAURENS ELECTRIC COOP			
TC2 UTC2	FIBER	FZJV / CITY OF GREENVILLE	G1	GAS	PIEDMONT NATURAL GAS			

DRAWN BY : B.A.H.  
 DATE : 01/20/15  
 REVIEWED BY : B.G.N.  
 DATE : 01/21/15  
 APPROVED BY : B.G.F.  
 DATE : 01/21/15

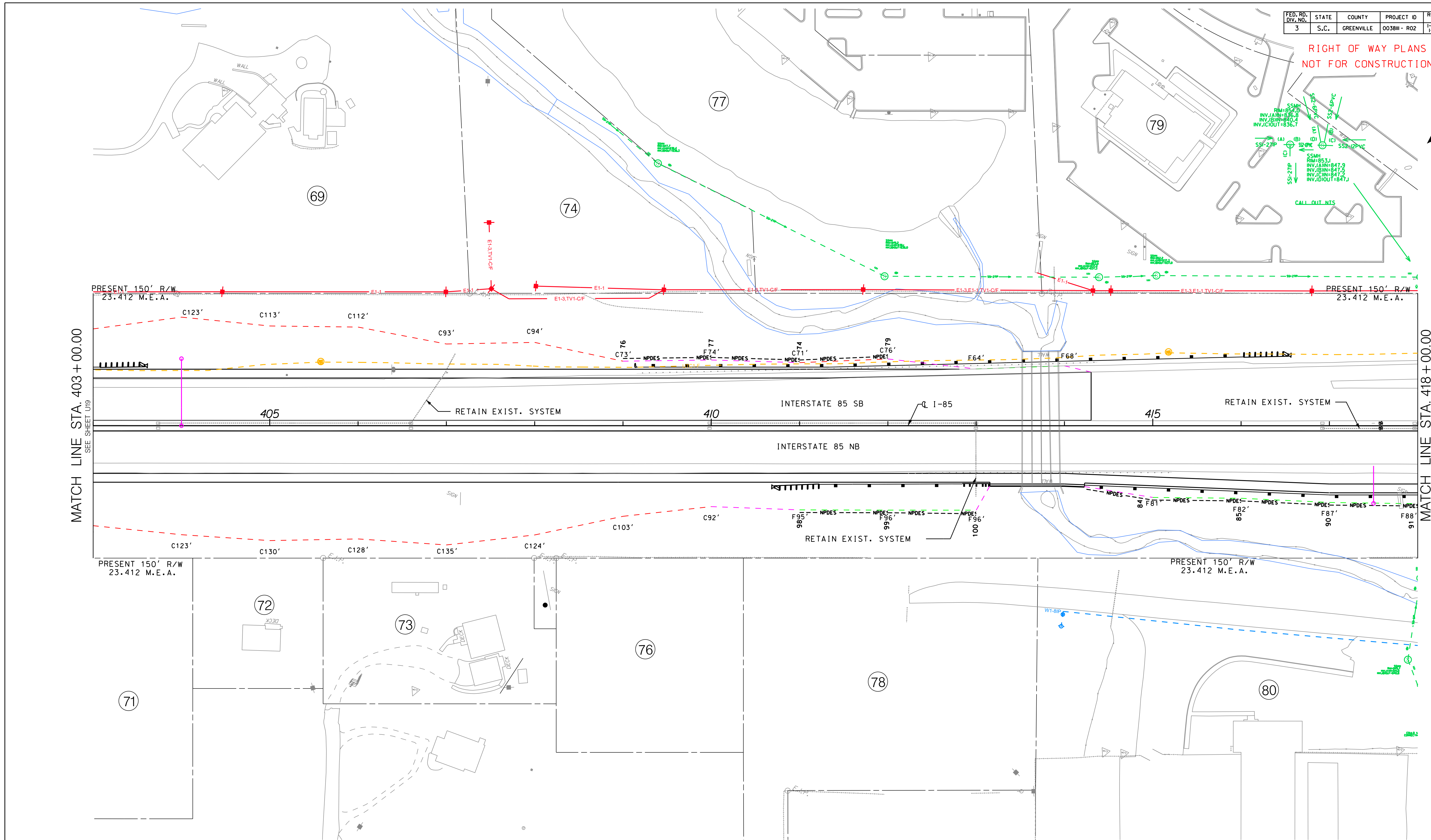
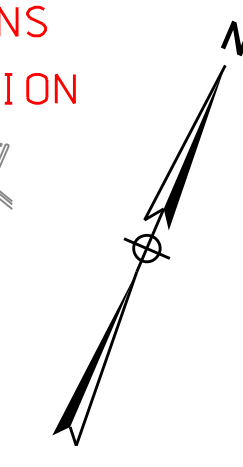


SOUTH CAROLINA DEPARTMENT OF TRANSPORTATION   
 I-85 / I-385 INTERCHANGE  
 UTILITY PLAN SHEET  
 STA. 388+00.00 TO STA. 403+00.00



FED. RD. DIV. NO.	STATE	COUNTY	PROJECT ID	ROUTE NO.	SHEET NO.
3	S.C.	GREENVILLE	0038H - R02	I-85 / I-385	U20

RIGHT OF WAY PLANS  
NOT FOR CONSTRUCTION



MATCH LINE STA. 403 + 00.00  
SEE SHEET U19

MATCH LINE STA. 418 + 00.00  
SEE SHEET U21

ID	TYPE	UTILITY	ID	TYPE	UTILITY	DESCRIPTION	BY	CHECKED
T1 UT1	PHONE/FIBER	AT&T DISTRIBUTION	TV1 UTV1	TV/FIBER	CHARTER COMMUNICATIONS			
T3 UT3	FIBER	LEVEL 3 COMMUNICATIONS	W1	WATER	GREENVILLE WATER SYSTEM			
T4 UT4	FIBER	TW TELECOM	SS1 FSS1	SEWER-TRANS	REWA (REWA)			
T5 UT5	FIBER	PALMETTO NET	SS2 FSS2	GRAVITY SEWER	METROPOLITAN SEWER			
T6 UT6	FIBER	VERIZON BUSINESS (MC)	SS3 FSS3	GRAVITY SEWER	CITY OF GREENVILLE			
T7 UT7	FIBER	TIME WARNER CABLE (TWT)	E1 UE1	E-DIST	DUKE ENERGY			
T8 UT8	FIBER	SPIRIT TELECOM (SPT)	E2	E-TRANS	DUKE ENERGY			
TC1 UTC1	FIBER	SCDOT	E3 UE3	E-DIST	LAURENS ELECTRIC COOP			
TC2 UTC2	FIBER	FZJV / CITY OF GREENVILLE	G1	GAS	PIEDMONT NATURAL GAS			

DRAWN BY : B.A.H.  
DATE : 01/20/15

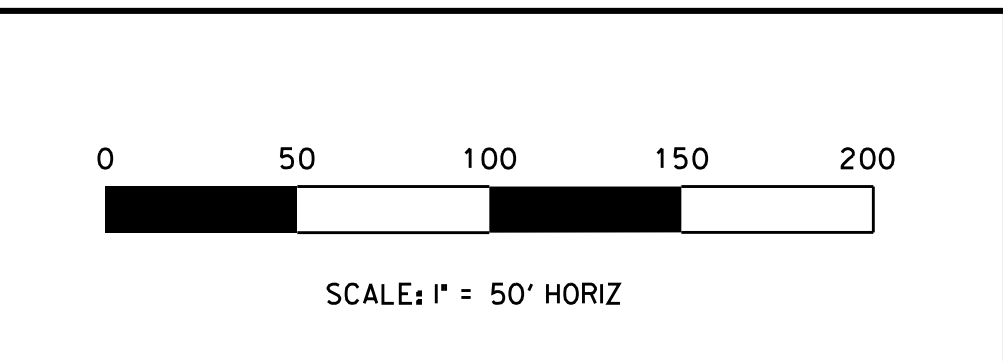
REVIEWED BY : B.G.N.  
DATE : 01/21/15

APPROVED BY : B.G.F.  
DATE : 01/21/15

**FLATIRON** **ZACHRY**  
a joint venture

**C E**  
**C S**

CIVIL ENGINEERING  
CONSULTING SERVICES, INC.



SOUTH CAROLINA DEPARTMENT OF TRANSPORTATION **SCDOT**

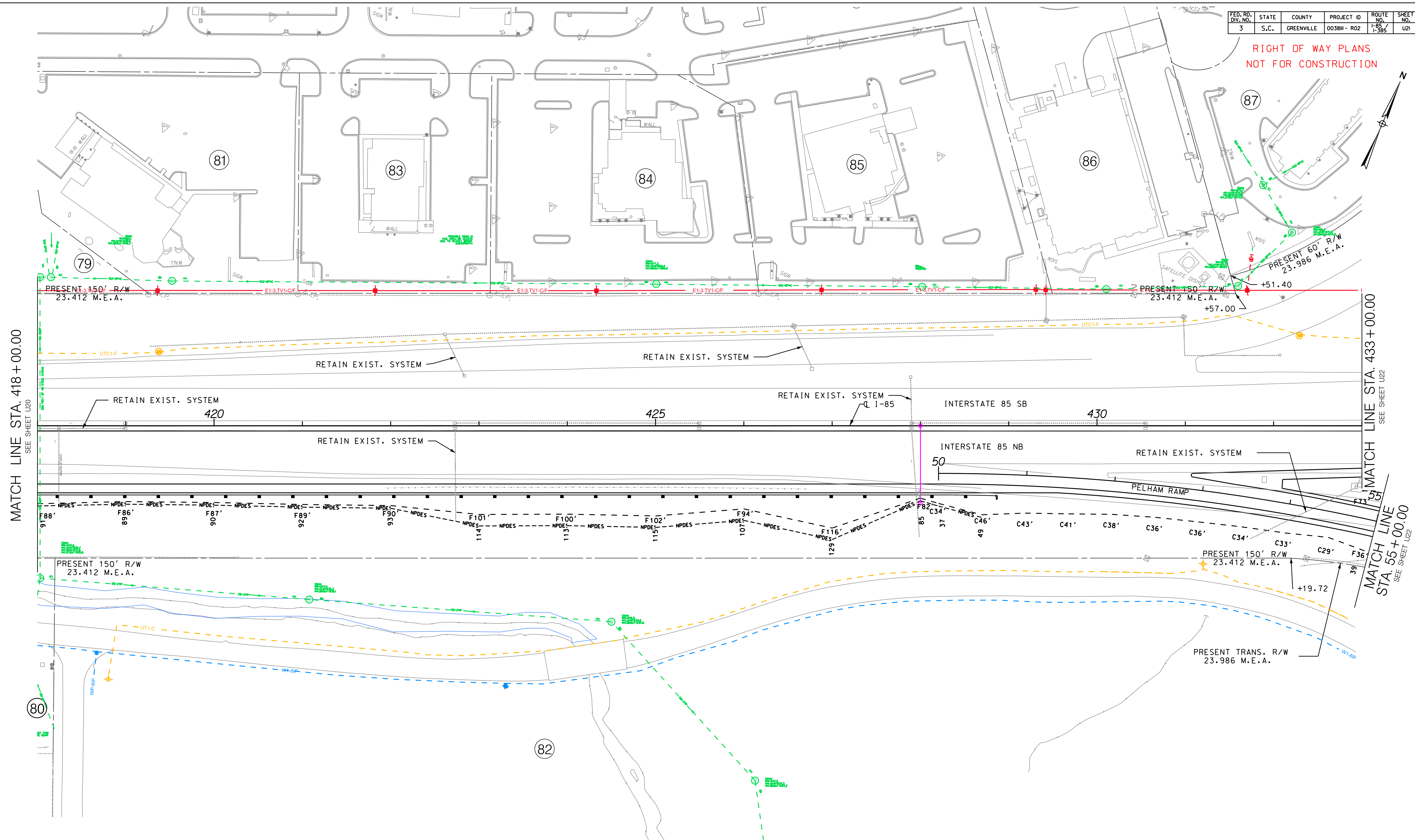
I-85 / I-385 INTERCHANGE

UTILITY PLAN SHEET  
STA. 403+00.00 TO STA. 418+00.00



FED. RD. DIV. NO.	STATE	COUNTY	PROJECT ID	ROUTE NO.	SHEET NO.
3	S.C.	GREENVILLE	0038H - R02	I-85 / I-385	U21

RIGHT OF WAY PLANS  
NOT FOR CONSTRUCTION



MATCH LINE STA. 418+00.00  
SEE SHEET U20

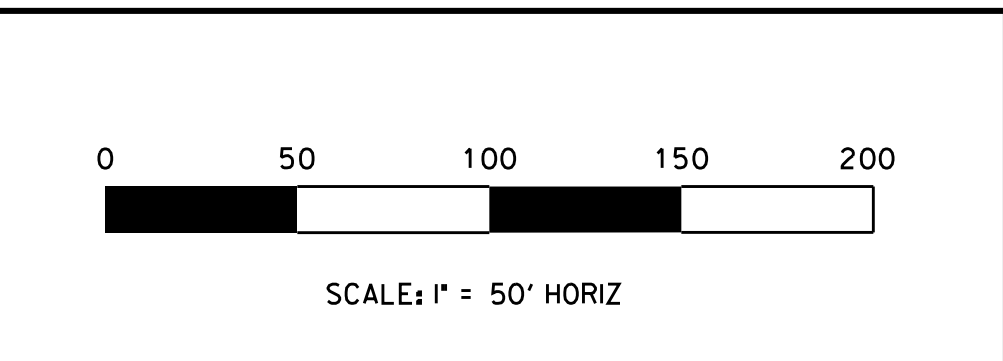
MATCH LINE STA. 433+00.00  
SEE SHEET U22

ID	TYPE	UTILITY	ID	TYPE	UTILITY	DESCRIPTION	BY	CHECKED
T1 UT1	PHONE/FIBER	AT&T DISTRIBUTION	TV1 UTV1	TV/FIBER	CHARTER COMMUNICATIONS			
T3 UT3	FIBER	LEVEL 3 COMMUNICATIONS	W1	WATER	GREENVILLE WATER SYSTEM			
T4 UT4	FIBER	TW TELECOM	SS1 FSS1	SEWER-TRANS	REWA (REWA)			
T5 UT5	FIBER	PALMETTO NET	SS2 FSS2	GRAVITY SEWER	METROPOLITAN SEWER			
T6 UT6	FIBER	VERIZON BUSINESS (MC)	SS3 FSS3	GRAVITY SEWER	CITY OF GREENVILLE			
T7 UT7	FIBER	TIME WARNER CABLE (TWT)	E1 UE1	E-DIST	DUKE ENERGY			
T8 UT8	FIBER	SPIRIT TELECOM (SPT)	E2	E-TRANS	DUKE ENERGY			
TC1 UTC1	FIBER	SCDOT	E3 UE3	E-DIST	LAURENS ELECTRIC COOP			
TC2 UTC2	FIBER	FZJV / CITY OF GREENVILLE	G1	GAS	PIEDMONT NATURAL GAS			

**FLATIRON** **ZACHRY**  
a joint venture

**C E**  
**C S**

CIVIL ENGINEERING  
CONSULTING SERVICES, INC.



DRAWN BY : B.A.H. DATE : 01/20/15
REVIEWED BY : B.G.N. DATE : 01/21/15
APPROVED BY : B.G.F. DATE : 01/21/15

SOUTH CAROLINA DEPARTMENT OF TRANSPORTATION **SCDOT**

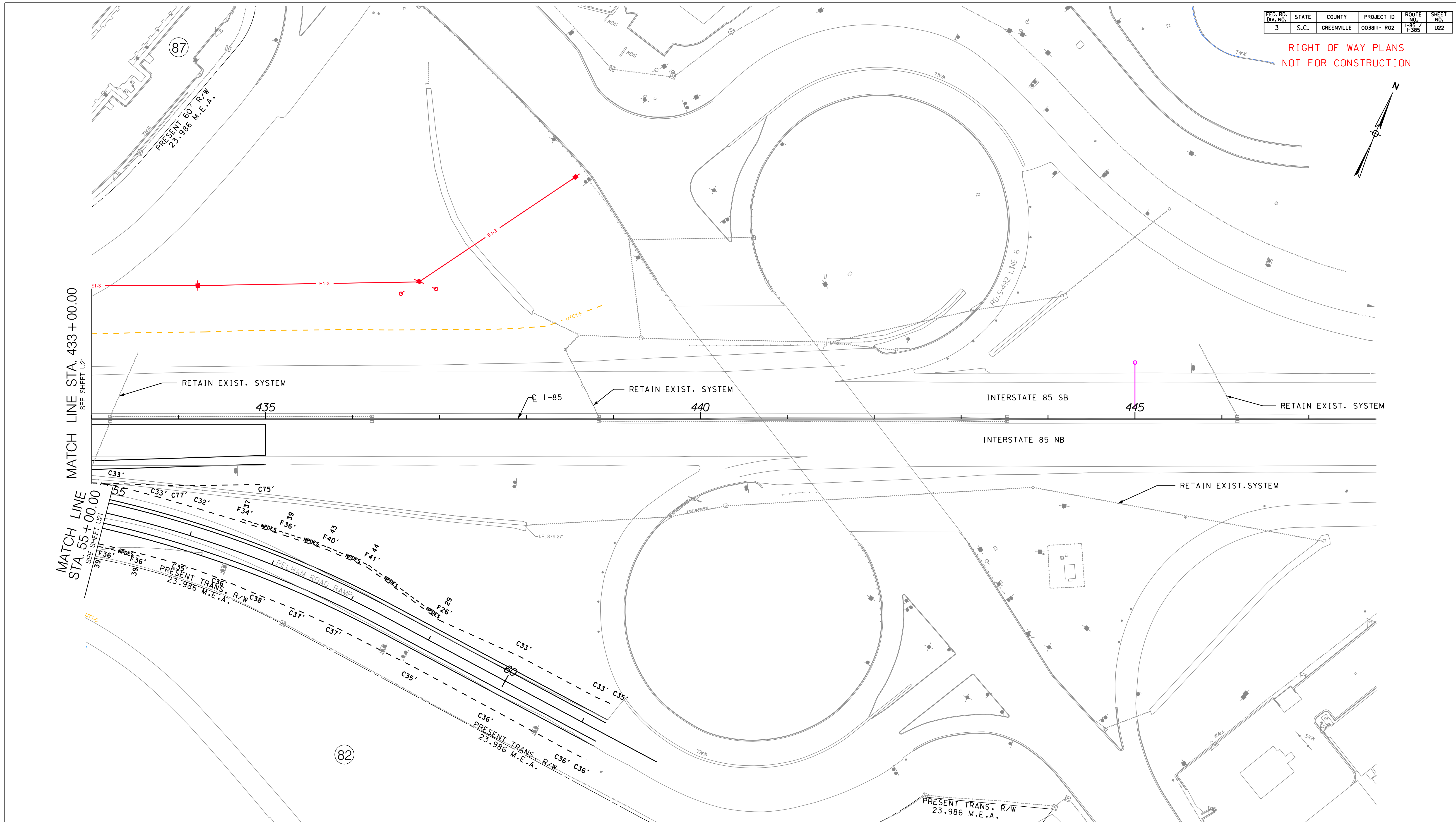
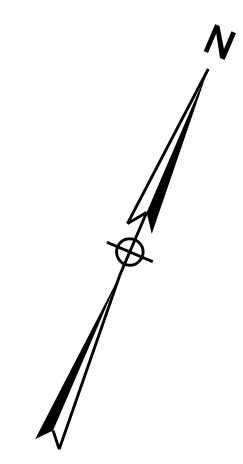
I-85 / I-385 INTERCHANGE

UTILITY PLAN SHEET  
STA. 418+00.00 TO STA. 433+00.00



FED. RD. DIV. NO.	STATE	COUNTY	PROJECT ID	ROUTE NO.	SHEET NO.
3	S.C.	GREENVILLE	0038H - R02	I-85 / I-385	U22

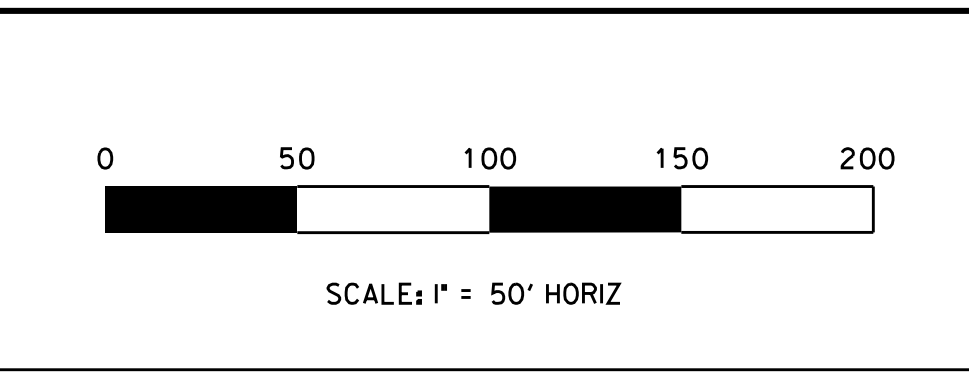
RIGHT OF WAY PLANS  
NOT FOR CONSTRUCTION



ID	TYPE	UTILITY	ID	TYPE	UTILITY
T1 UT1	PHONE/FIBER	AT&T DISTRIBUTION	TV1 UTV1	TV/FIBER	CHARTER COMMUNICATIONS
T3 UT3	FIBER	LEVEL 3 COMMUNICATIONS	W1	WATER	GREENVILLE WATER SYSTEM
T4 UT4	FIBER	TW TELECOM	SS1 FSS1	SEWER-TRANS	REWA (REWA)
T5 UT5	FIBER	PALMETTO NET	SS2 FSS2	GRAVITY SEWER	METROPOLITAN SEWER
T6 UT6	FIBER	VERIZON BUSINESS (MC)	SS3 FSS3	GRAVITY SEWER	CITY OF GREENVILLE
T7 UT7	FIBER	TIME WARNER CABLE (TWT)	E1 UE1	E-DIST	DUKE ENERGY
T8 UT8	FIBER	SPIRIT TELECOM (SPT)	E2	E-TRANS	DUKE ENERGY
TC1 UTC1	FIBER	SCDOT	E3 UE3	E-DIST	LAURENS ELECTRIC COOP
TC2 UTC2	FIBER	FZJV / CITY OF GREENVILLE	G1	GAS	PIEDMONT NATURAL GAS

DESCRIPTION	BY	CHECKED

DRAWN BY : B.A.H. 01/20/15  
 REVIEWED BY : B.G.N. 01/21/15  
 APPROVED BY : B.G.F. 01/21/15



SOUTH CAROLINA DEPARTMENT OF TRANSPORTATION  
 I-85 / I-385 INTERCHANGE  
 UTILITY PLAN SHEET  
 STA. 433+00.00 TO STA. 447+76.64