



CROSS ISLAND PARKWAY (US 278) TOLL CONVERSION

EARLY COORDINATION MEETING #2
MAY 13, 2021

Disclaimer

All information provided today is for information only, non-binding, does not constitute legal or other advice, and does not amend or form part of the Final Request for Proposals (RFP).

Purpose

- Provide Updated Information
- Get Feedback & Answer Questions

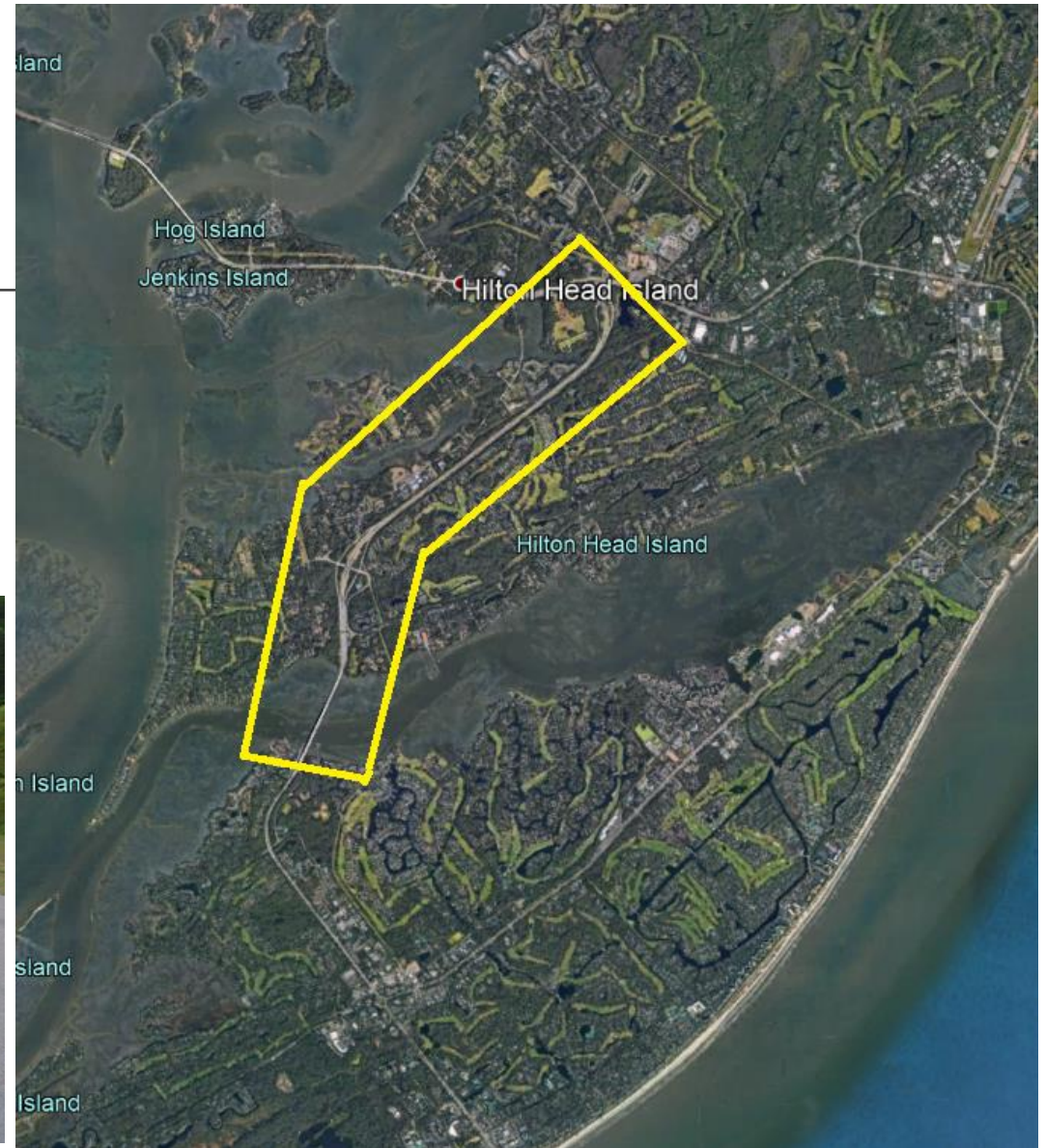
Agenda

- Location/ Overview
- Procurement Type
- Scope of Work
- Schedule
- Q&A

Project Location

Beaufort County / Town of Hilton Head

From US 278 Business (William Hilton Parkway) to the Bridge over Broad Creek

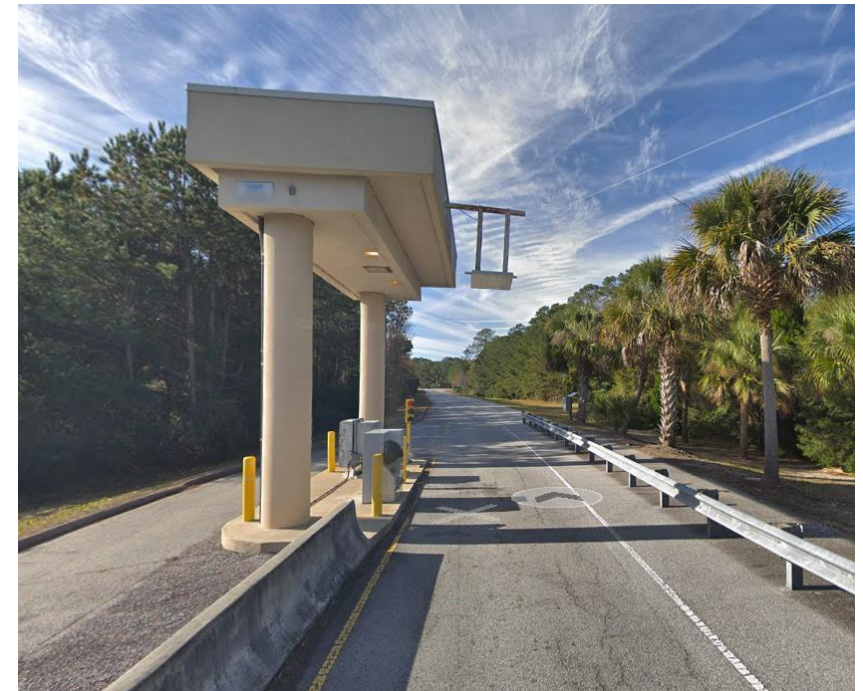
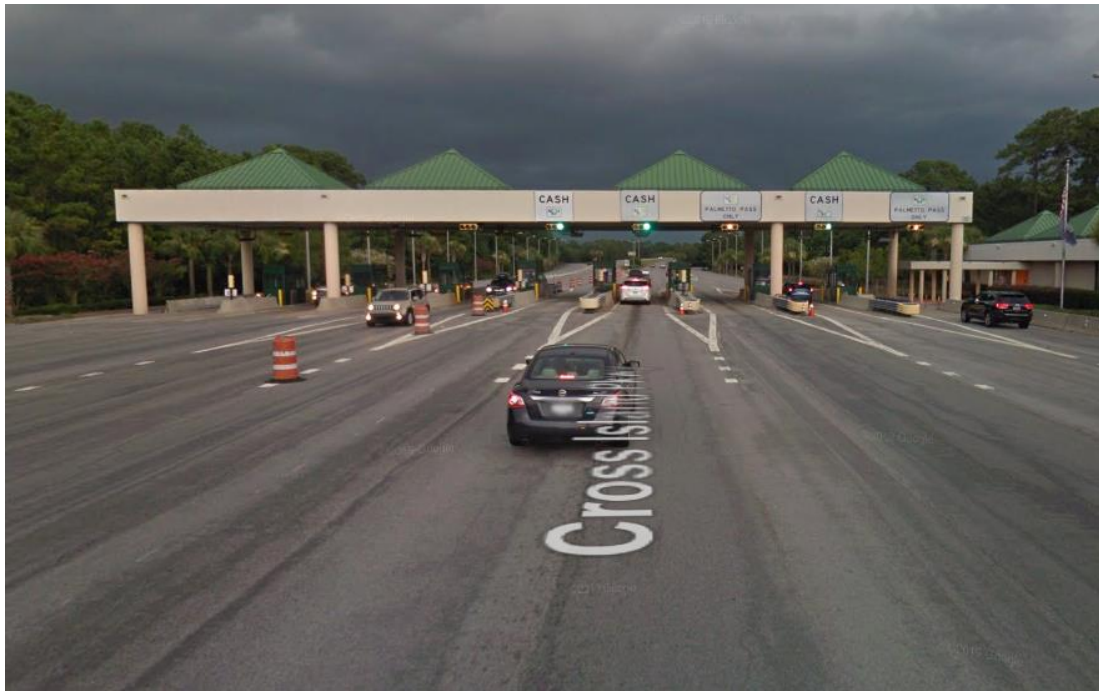


Anticipated Procurement Type

- Two Phase Design-Build
- Best Value – Fixed Price – Variable Scope
- ATCs for Pavement Design Only
- Weighted Criteria Formula
 - Technical Score
 - Variable Scope
 - B Time for Interim Condition

Anticipated Scope of Work (Base)

- Removal of Tolling Infrastructure (Interim Condition B Time)



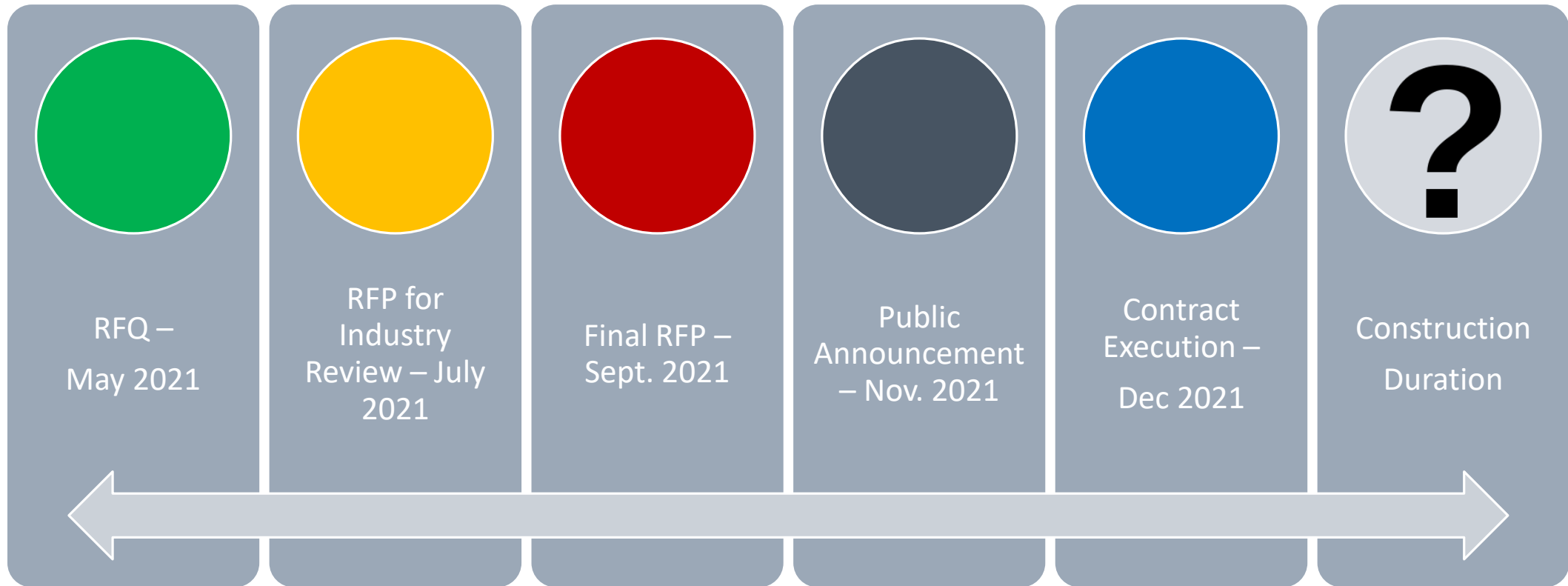
Anticipated Scope of Work (Base)

- Mainline Toll Facilities Removal
- Automated Ramp Toll Facilities Removal
- Pavement Realignment between Marshland Rd and Broad Creek Bridge
- Pavement Reconstruction using CMRB

Anticipated Scope of Work (Variable Scope)

- Full Depth Reconstruction of outside Shoulders on Mainline
- Full Depth Reconstruction of ramps and ramp shoulders
- Mill and Fill 2” along Sol Blatt Jr. Parkway in both directions
- Completely remove tunnel under existing toll plaza facilities
- Clean and paint structural steel on multiple structures
- Reseal expansion joints on multiple structures

Anticipated Project Schedule



Anticipated Fixed Price

- \$10.5 to \$11.5 Million

Anticipated Project Information

- Survey
- NEPA Document not required
- Only land disturbance permits are anticipated

Questions / Discussion

Feedback

Email: mattoxjh@scdot.org