



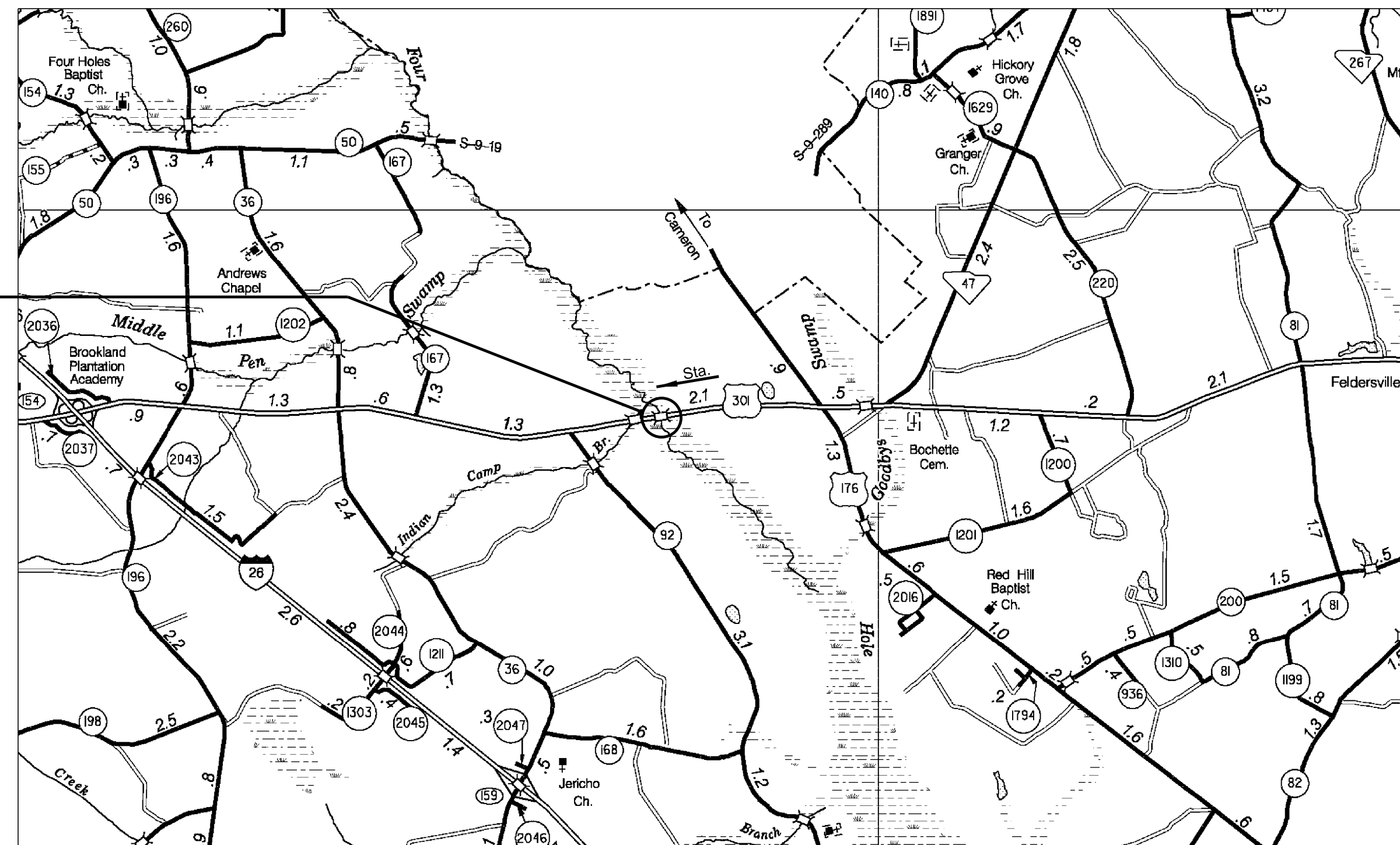
South Carolina Department of Transportation

INDEX OF SHEETS

1. Title Sheet
2. Bridge Plan and Profile (Northbound Bridge)
3. Bridge Plan and Profile (Southbound Bridge)
4. Typical Section

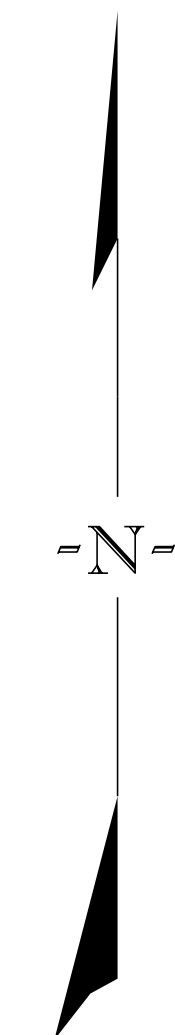
PROPOSED PLANS FOR ORANGEBURG COUNTY PROJECT ID 0040308 U.S. ROUTE 301 (FIVE CHOP ROAD) REPLACE DUAL BRIDGES OVER FOUR HOLE SWAMP

SITE LOCATION



LAYOUT

Approximate Location of Bridge is
Latitude 33° - 27' - 27"
Longitude 80° - 38' - 52"



3 DAYS BEFORE DIGGING IN
SOUTH CAROLINA
CALL 811
SOUTH CAROLINA 811 (SC811)
WWW.SC811.COM
ALL UTILITIES MAY NOT BE A MEMBER OF SC811

ASSET ID (US 301 NB) TBD
ASSET ID (US 301 SB) TBD

TRAFFIC DATA (COMBINED)			
2022	ADT	10,200	V.P.D.
2042	ADT	15,200	V.P.D.
	TRUCKS	13	%

NET LENGTH OF ROADWAY	0.000	MILES
NET LENGTH OF BRIDGES	0.113	MILES
NET LENGTH OF PROJECT	0.113	MILES
LENGTH OF EXCEPTIONS	0.000	MILES
GROSS LENGTH OF PROJECT	0.113	MILES

NOTE: EXCEPT AS MAY OTHERWISE BE SPECIFIED ON THE PLANS OR IN THE SPECIAL PROVISIONS, ALL MATERIALS AND WORKMANSHIP ON THIS PROJECT SHALL CONFORM TO THE SOUTH CAROLINA DEPARTMENT OF TRANSPORTATION STANDARD SPECIFICATIONS FOR HIGHWAY CONSTRUCTION (2007 EDITION) AND THE STANDARD DRAWINGS FOR ROAD CONSTRUCTION IN EFFECT AT THE TIME OF LETTING.

**CONCEPTUAL PLANS
NOT FOR CONSTRUCTION**

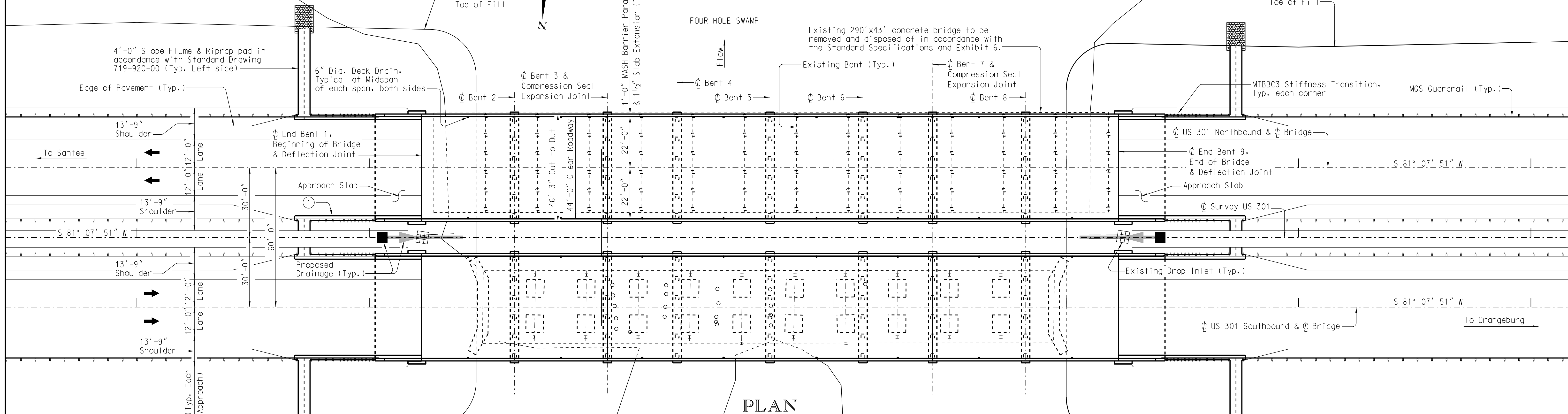
Cover/A Printed: Wednesday, February 16, 2022 10:00:36 AM

REVIEWED	DR.	JAC	BY	CHK	DATE
					02-22

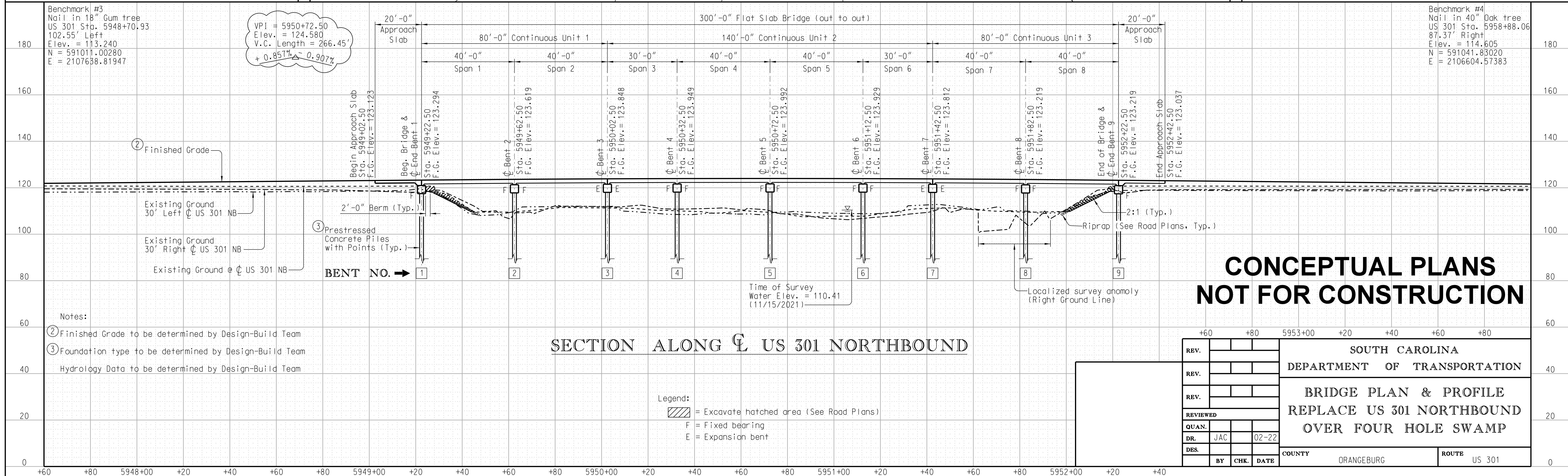
Notes: 5948+00 5949+00 5950+00 5951+00 5952+00 5953+00

Place Bridge End Riprap (not shown in Plan view) in accordance with Standard Drawing 804-105-00.

① Curb & Gutter & Flume (Std. Dwg. 719-920-00) tied to median ditch (Typ. Right Side)



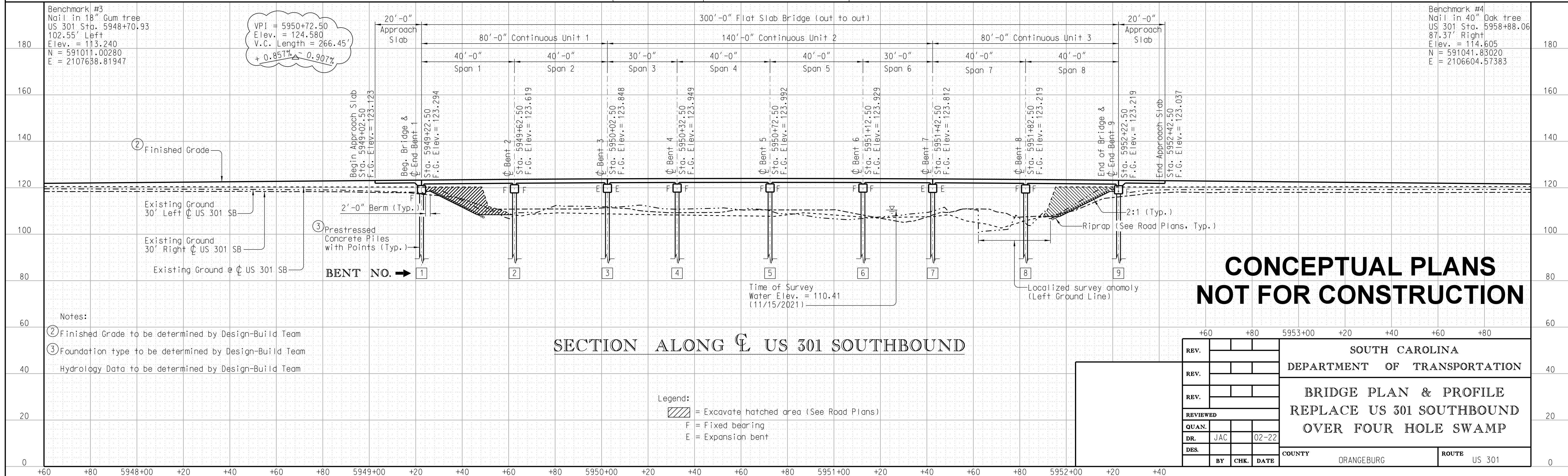
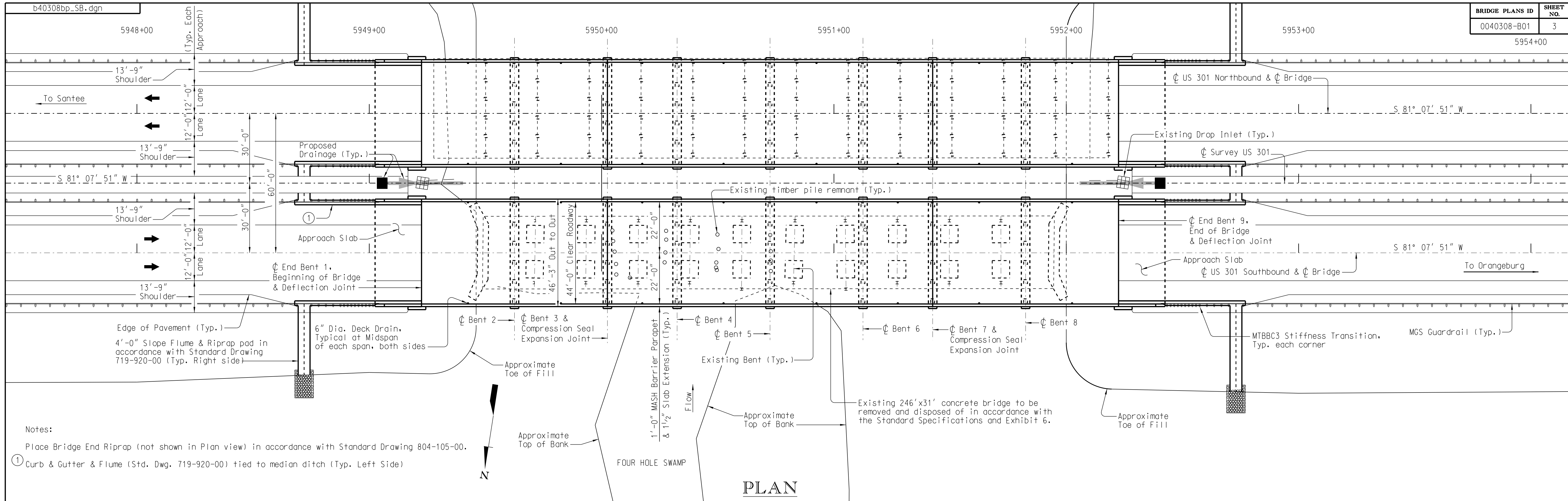
PLAN



CONCEPTUAL PLANS NOT FOR CONSTRUCTION

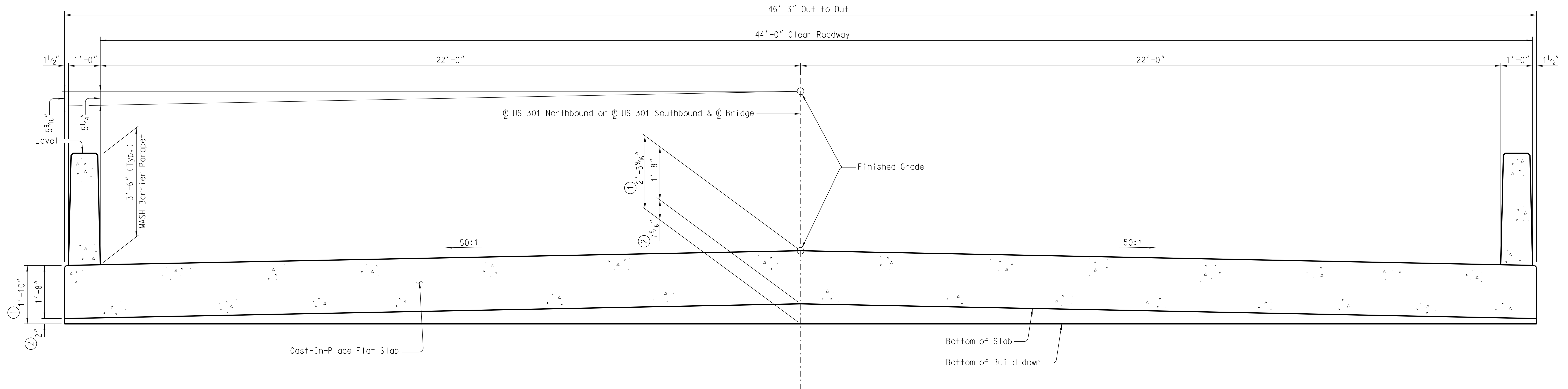
REV.				SOUTH CAROLINA DEPARTMENT OF TRANSPORTATION	
REV.				BRIDGE PLAN & PROFILE REPLACE US 301 NORTHBOUND OVER FOUR HOLE SWAMP	
REV.				COUNTY ORANGEBURG ROUTE US 301	
QUAN.					
DR.	JAC		02-22		
DES.					

Printed: Wednesday, April 16, 2022 8:38:51 AM



**CONCEPTUAL PLANS
NOT FOR CONSTRUCTION**

REV.				
REV.				
REV.				
REVIEWED				
QUAN.				
DR.	JAC	02-22		
DES.				
BY	CHK.	DATE	COUNTY	ROUTE
			ORANGEBURG	US 301



SECTION THRU SUPERSTRUCTURE

(Deck Drains Not Shown)

- ① At ϕ Bent
- ② Includes 1/2" elastomeric bearing pad

**CONCEPTUAL PLANS
NOT FOR CONSTRUCTION**

REV.				SOUTH CAROLINA DEPARTMENT OF TRANSPORTATION			
REV.							
REV.							
REVIEWED				TYPICAL SECTION			
QUAN.							
DR.	JAC		02-22				
DES.				COUNTY	ORANGEBURG	ROUTE	US 301
	BY	CHK.	DATE				