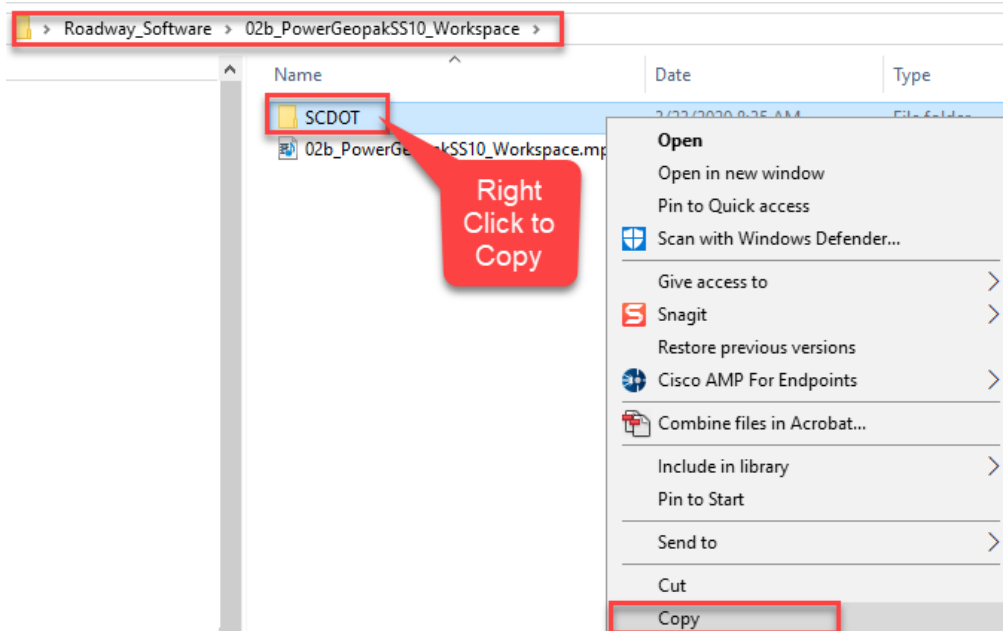
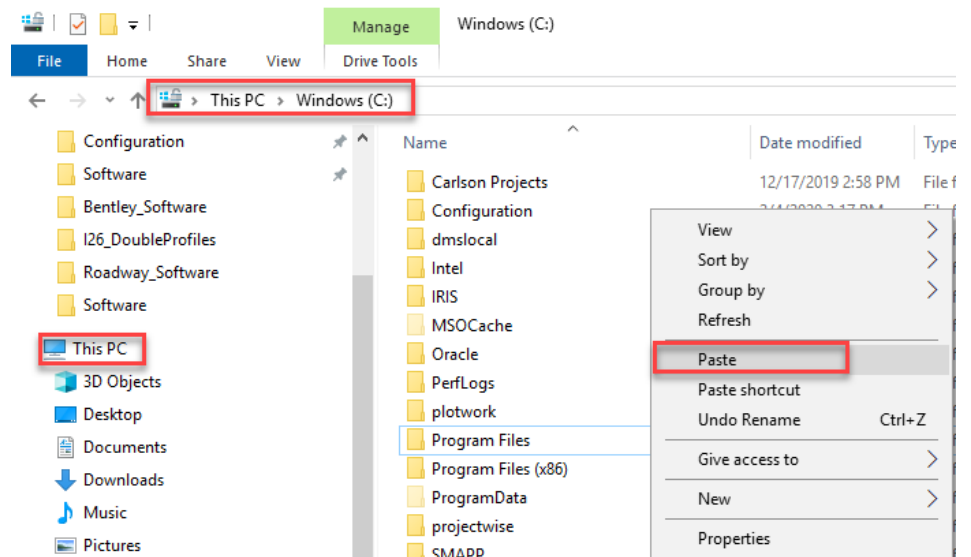


SCDOT PowerGeopak SS 10 – Workspace - Setup Instructions

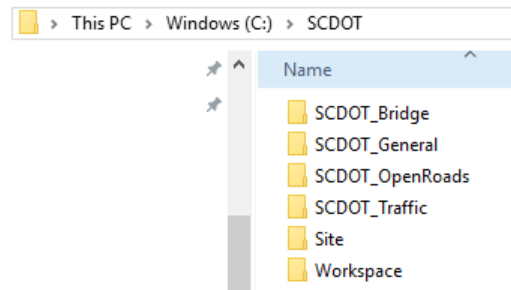
1. Open the SCDOT_PowerGeopakSS10_Workspace folder and **right click to Copy the SCDOT folder.**



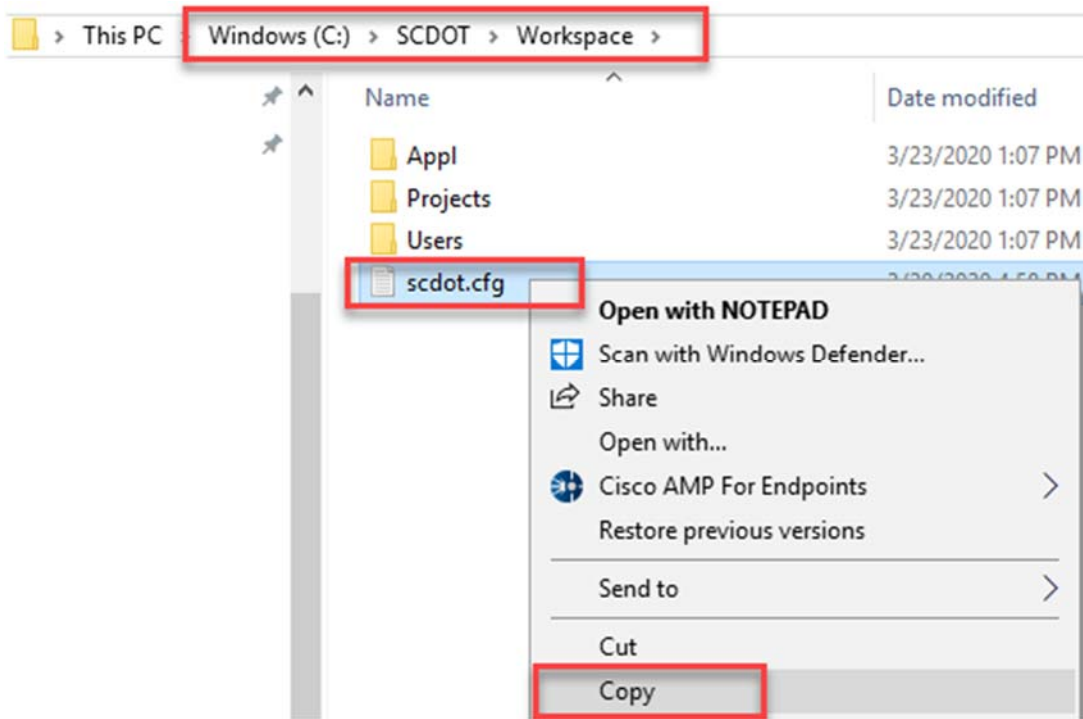
2. **Open “This PC”** by going to the Start panel and typing TH to bring it up. Open the C:\ drive folder. Right click to **Paste** the SCDOT folder to the root of the C:\ drive.



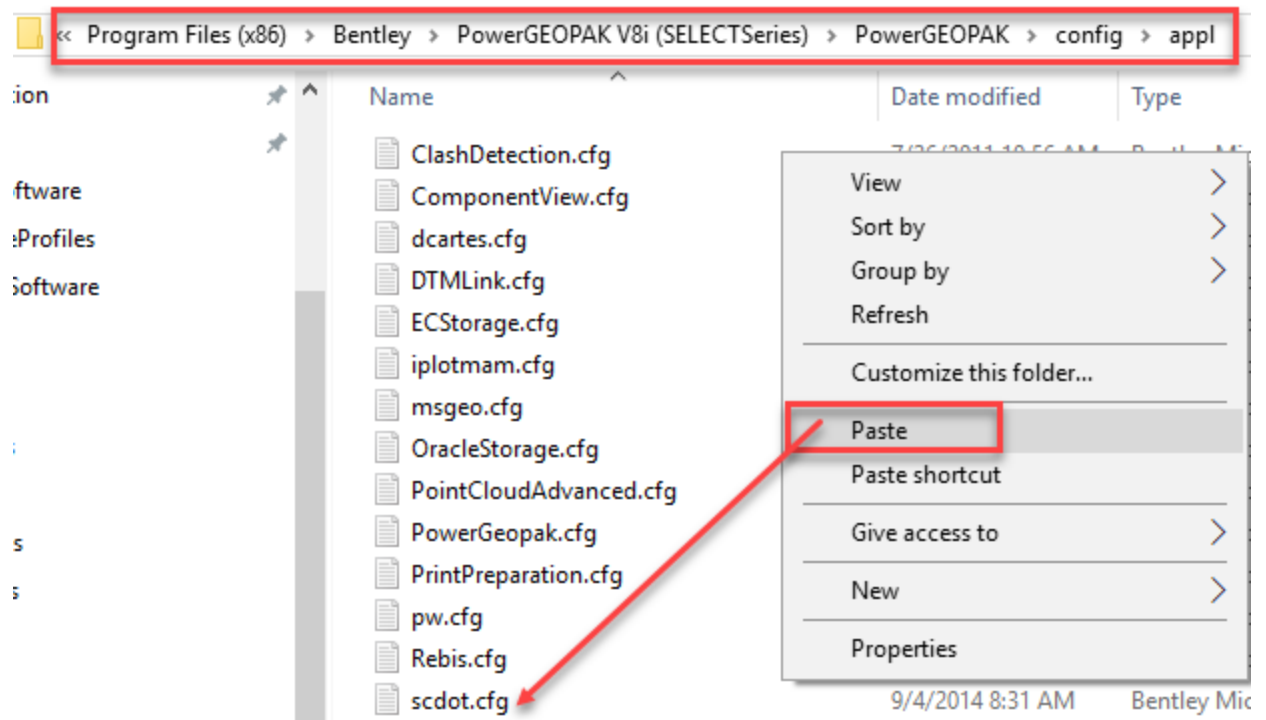
3. Open the **SCDOT** folder to see the Workspaces for Bridge, OpenRoads, and Traffic



4. Open the Workspace folder, right click on **scdot.cfg** and select **Copy**



5. Navigate to C:\Program Files (x86)\Bentley\PowerGEOPAK V8i (SELECTSeries)\PowerGEOPAK\config\appl



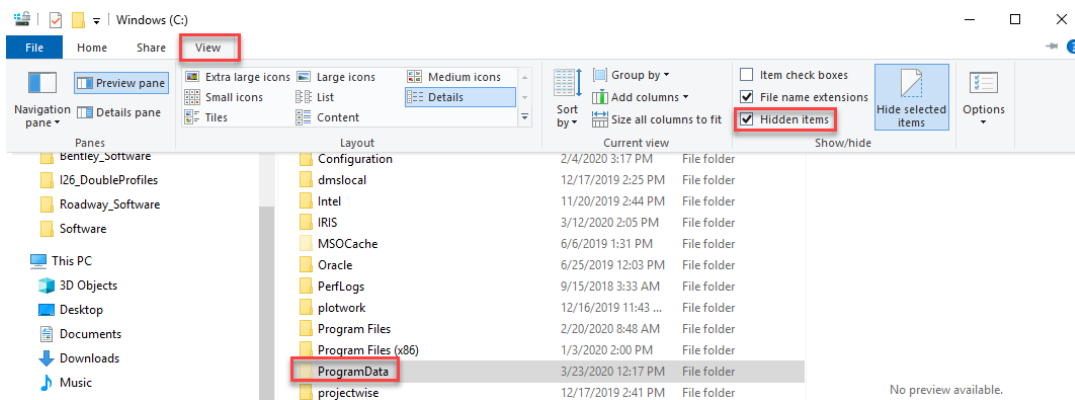
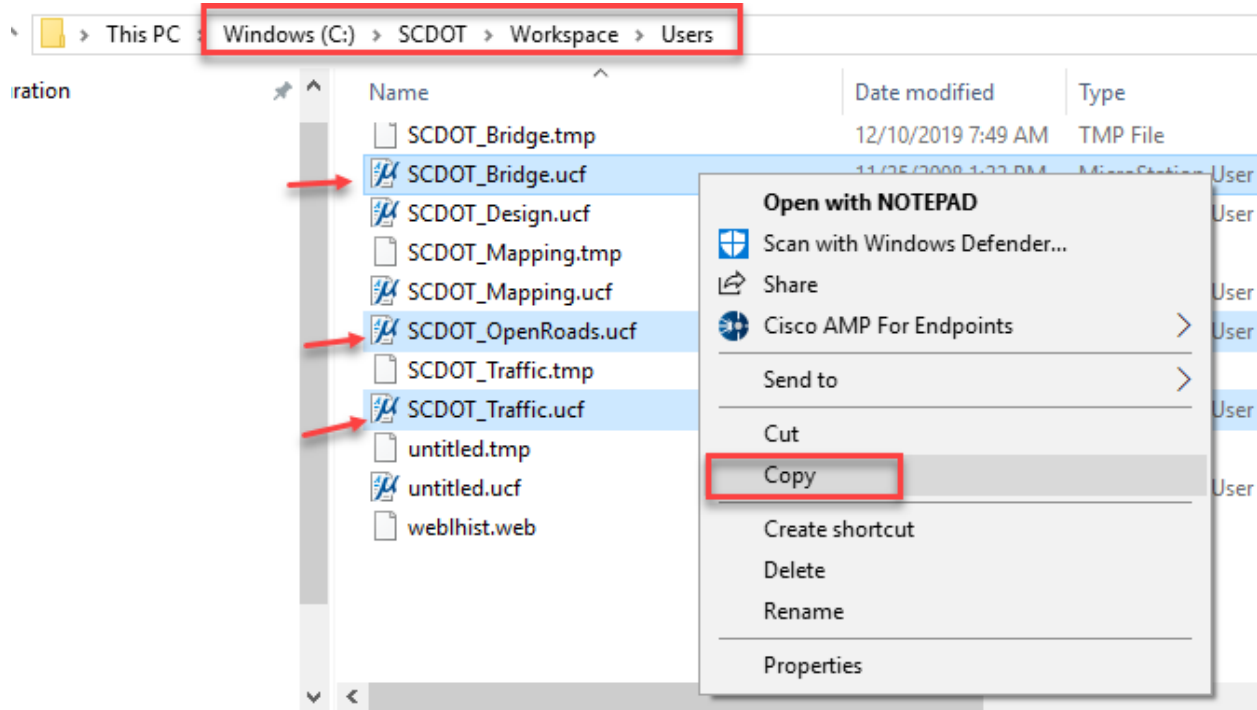
6. If you open the scdot.cfg in Notepad, you will see that it is pointing to all of the cadd standards at c:\scdot

```
scdot.cfg - Notepad
File Edit Format View Help
#--- This configuration file is used by the SCDOT install program to set the SCDOT_STANDARDS_ROOT path.
SCDOT_STANDARDS_ROOT = C:\SCDOT/
```

7. Open the c:\SCDOT\Workspace\Users folder. **Highlight** the SCDOT_Bridge.ucf, SCDOT_OpenRoads.ucf, and SCDOT_Traffic.ucf and right click to **select Copy**

8. Navigate to C:\ProgramData\Bentley\PowerGEOPAK V8i (SELECTseries)\Workspace\Users and right click to select Paste.

If you do not see the ProgramData folder, select the View tab in Windows Explorer and check on Hidden Items.

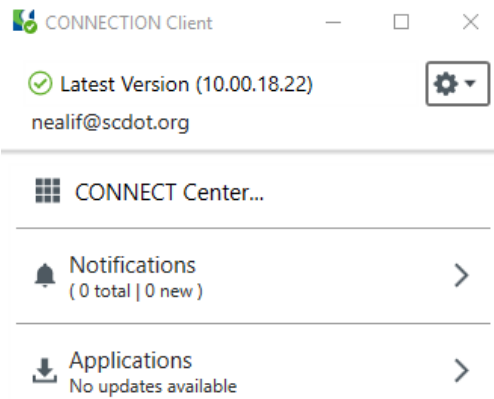


This PC > Windows (C:) > ProgramData > Bentley > PowerGEOPAK V8i (SELECTseries) > WorkSpace > Users

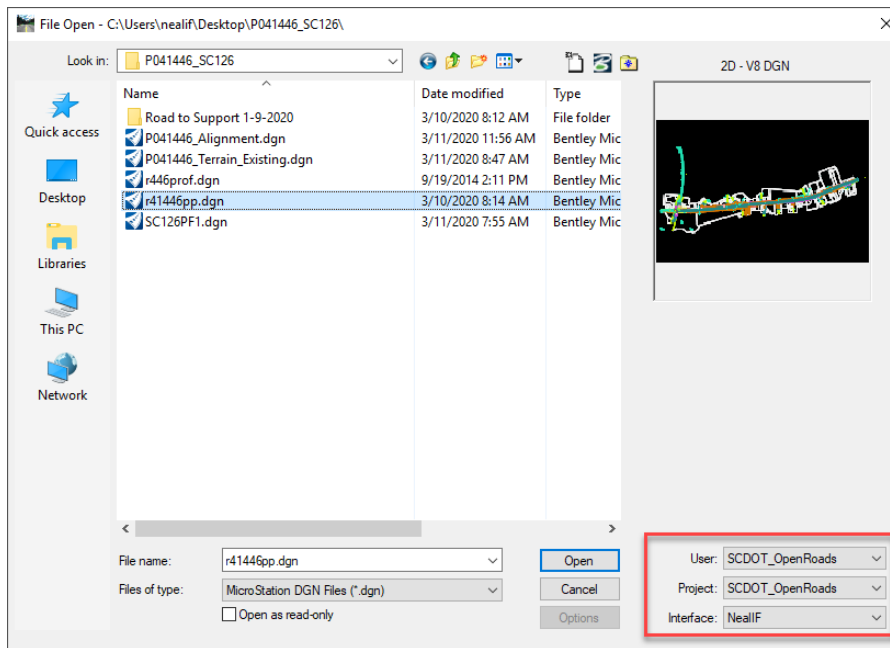
Name	Date modified	Type
examples.ucf	8/19/2008 9:28 AM	MicroStation User ...
geo_example_designer.ucf	6/6/2019 12:48 PM	MicroStation User ...
geo_example_dialogs.ucf	6/6/2019 12:48 PM	MicroStation User ...
msggeo.ucf	6/6/2019 11:58 AM	MicroStation User ...
Msgeo_mapfinishing.ucf	2/29/2012 3:20 PM	MicroStation User ...
mytown.ucf	11/24/2007 12:10 ...	MicroStation User ...
SCDOT_Bridge.ucf	11/25/2008 1:22 PM	MicroStation User ...
SCDOT_OpenRoads.ucf		MicroStation User ...
SCDOT_Traffic.ucf		MicroStation User ...
suda.ucf		MicroStation User ...
sue.ucf		MicroStation User ...
untitled.ucf		MicroStation User ...

View	>
Sort by	>
Group by	>
Refresh	
Customize this folder...	
Paste	
Paste shortcut	

9. Ensure that you are logged into the Connection Client.



10. Launch PowerGeopak SS10 from the icon on the desktop. On the bottom right, select SCDOT_Openroads for the User and your username for the Interface. The Project should automatically populate with SCDOT_OpenRoads.



11. Open or create a new *.dgn file to confirm that you see all of your workspace elements such as reference files, levels, linestyles, etc. BE SURE TO HIT CANCEL IF YOU ARE PROMPTED WITH A PROJECTWISE LOGIN DIALOG.

