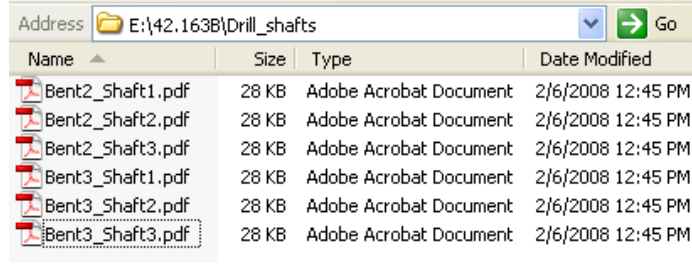


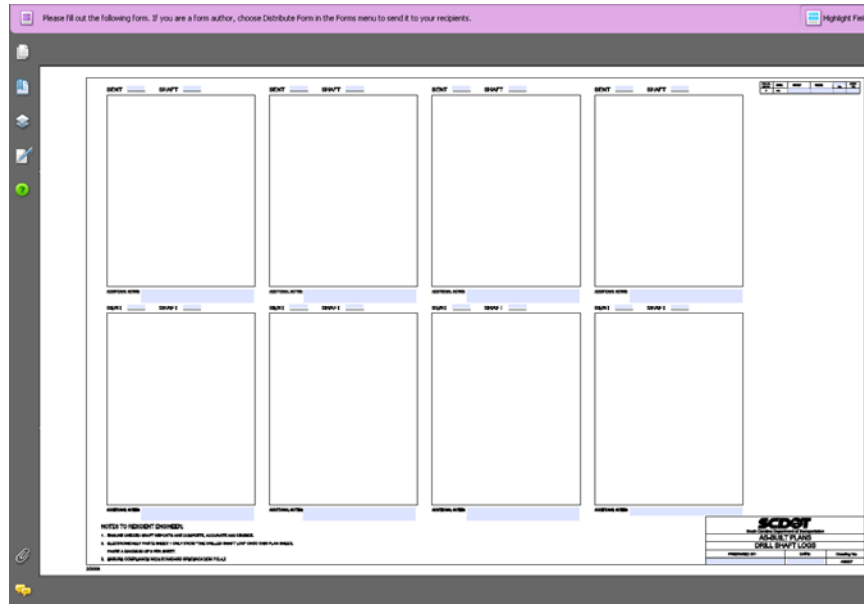
# Instructions for As-Built Form AB207 – Drill Shaft Logs

Requirements: Adobe Acrobat Professional 8.0 or earlier  
8.5” x 11” scanner

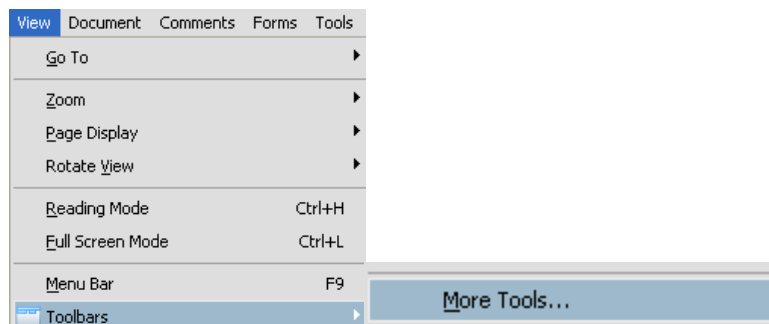
1. **Scan Sheet 1** of each completed Drill Shaft Log Report to a pdf, tif, or jpg document



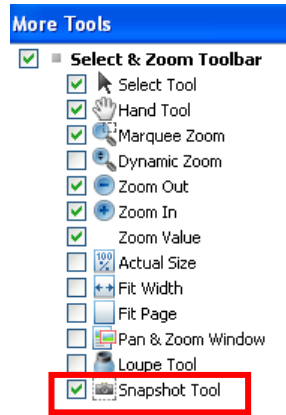
2. **Open the As-Built Form AB207.pdf** in Adobe Acrobat Professional



3. Select **View > Toolbars > More Tools** to access the More Tools dialog



4. Scroll down to the **Select & Zoom Toolbar** and toggle on the **Snapshot Tool**. Select **OK** when done. The Snapshot icon should now be located on the main toolbar



5. **Enter** the County, File, Route/Road, and Sheet Number in the appropriate form boxes in the upper right corner

FED. RD. DIV. NO.	STATE	COUNTY	FILE NO.	ROUTE NO.	SHEET NO.
3	S.C.	SPARTANBURG	42.163B	SC292	

*The Sheet No should be the sequential number following the other AB sheets at the beginning of the ASBUILT Plans*

6. **Enter** the Preparer's Name and Date in the form boxes in the bottom right corner

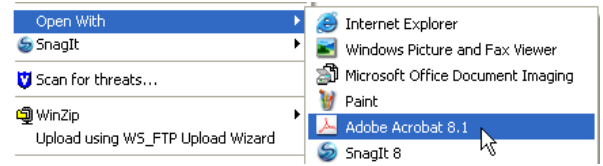
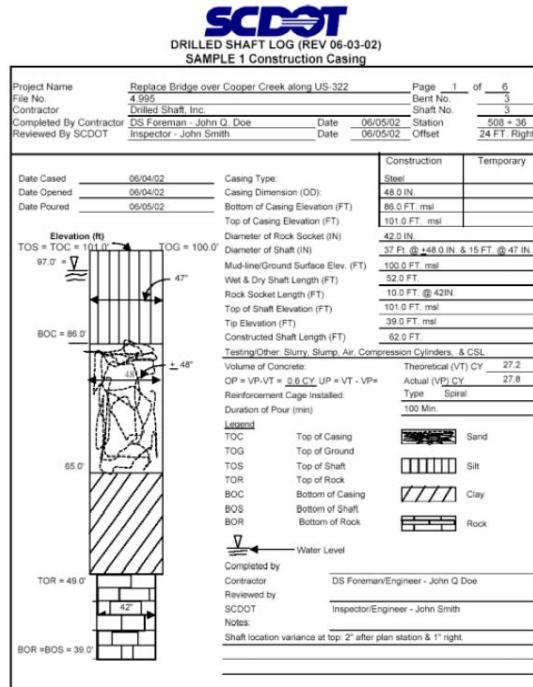
 South Carolina Department of Transportation		
<b>AS-BUILT PLANS</b> <b>DRILL SHAFT LOGS</b>		
PREPARED BY:	DATE:	Drawing No.
JOE RESIDENT, R.C.E.	02-11-2008	AB207

7. **Enter** the Bent and Shaft information and any Additional Notes in the form boxes for each scanned document

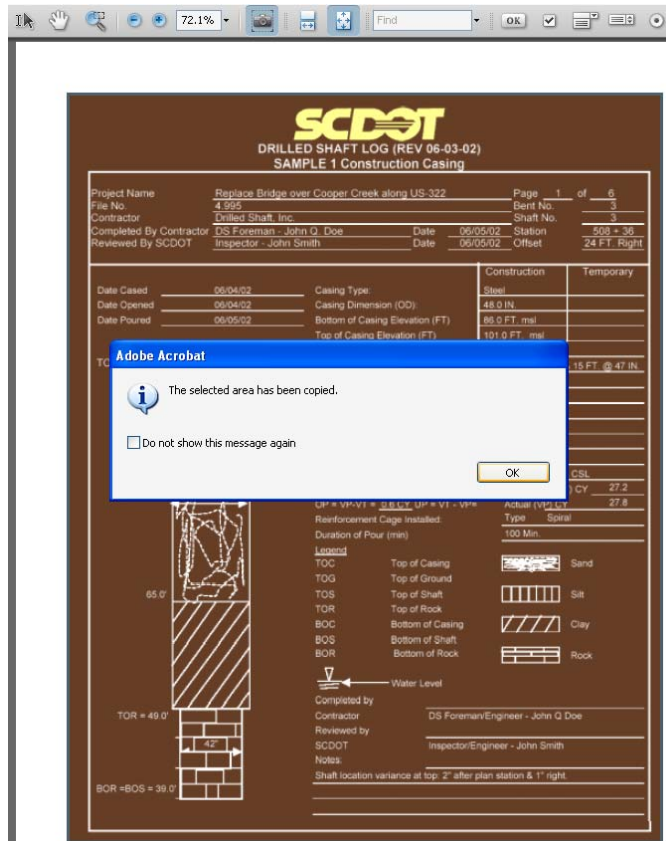
BENT  SHAFT

ADDITIONAL NOTES: Add any additional or special notes for Bent 2 Drill Shaft 1 here.

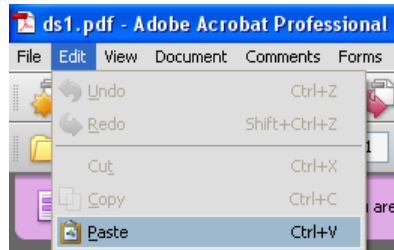
8. **Open** the 1<sup>st</sup> scanned document in Adobe Acrobat Professional. (If the scanned document is a tif or jpg, right-click and select **Open With > Adobe Acrobat**)



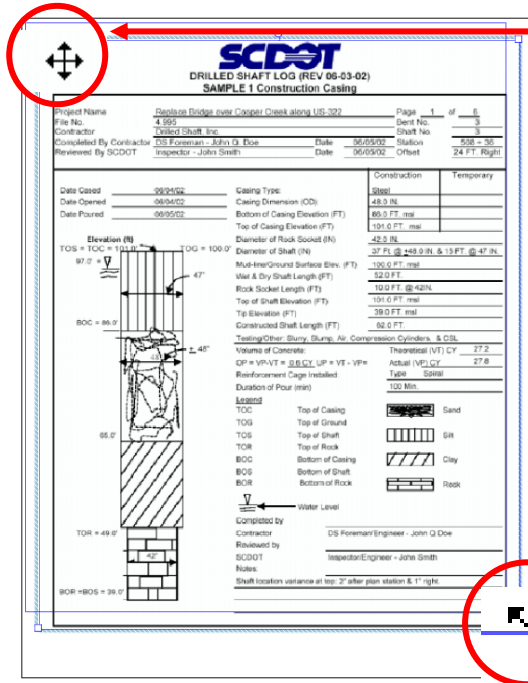
9. Press the **Snapshot** icon to activate. Click on the **upper left corner** of the area to capture and drag to the **lower right corner** to complete the capture. Press the **OK** button to accept the selected area



- Select from tab at the bottom from the desktop toolbar to **activate** the AB207.pdf as the active pdf file. Select **Edit > Paste**



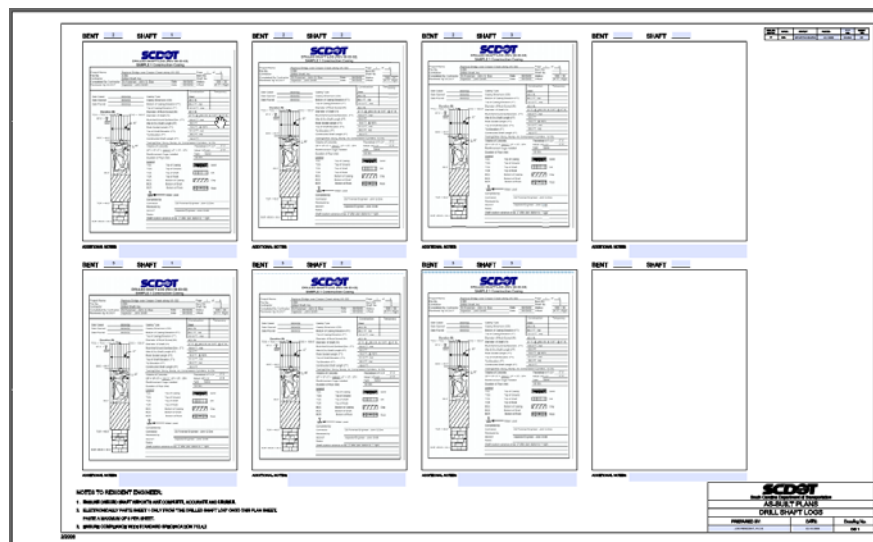
- The image will paste into the center of the AB207.pdf



Use the **cross arrow** to move the image into the upper left corner of the correct box

Use the **corner arrows** to resize the image to fit inside

- Repeat Steps 8, 9, 10, and 11 to add additional scanned images to complete the Drill Shaft Logs plan sheet



- PRINT TO A FULL SIZE 22" X 36" PLOTTER**